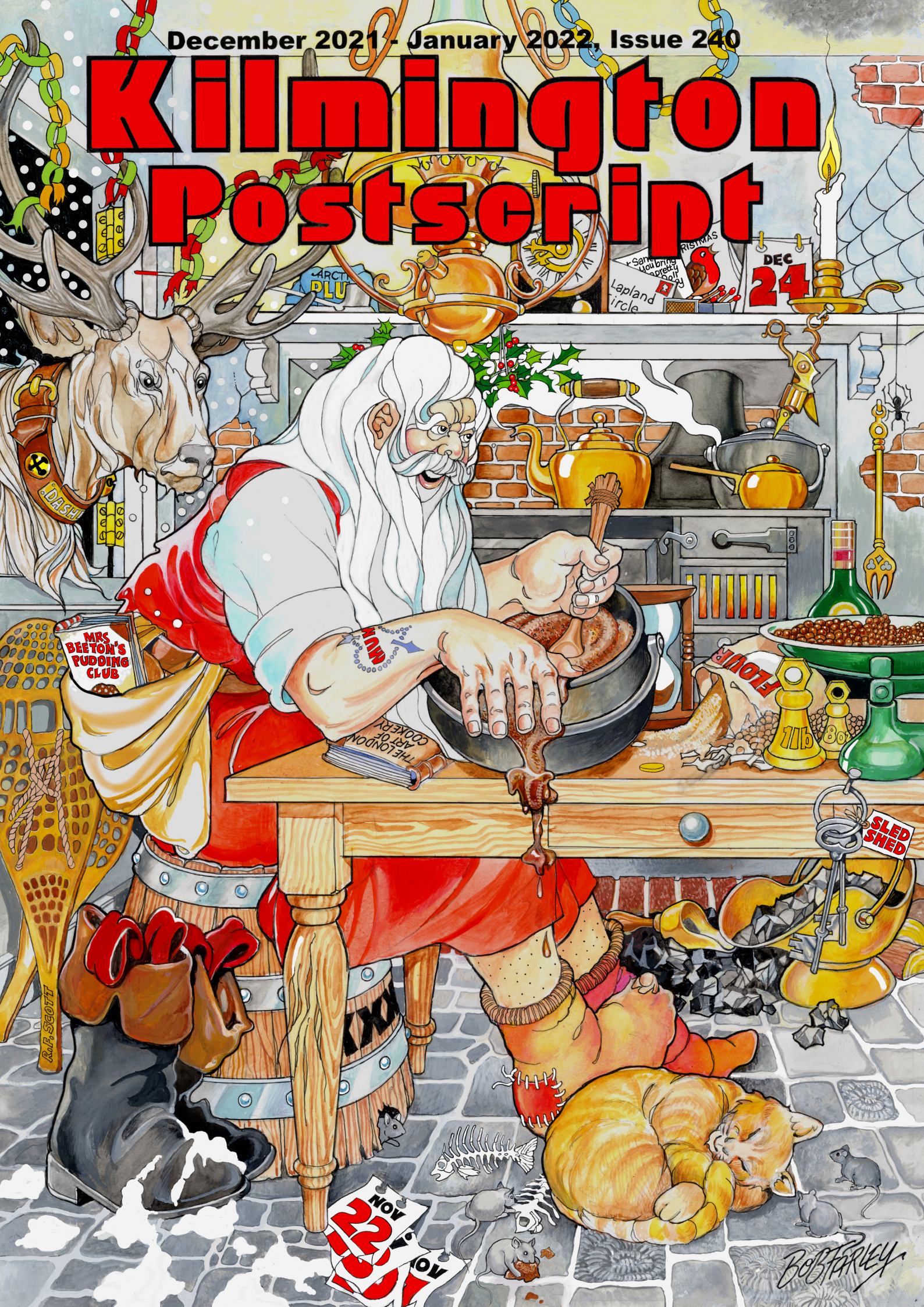


December 2021 - January 2022, Issue 240

Kilmingington Postscript



EDITORIAL

Not long after he moved to Kilmington, Bob Farley's attention was drawn to a notice in Postscript from new editor, Helen Shaw, asking whether anybody knew of an artist. By May 2005 he was 'our own resident artist'. The first Christmas covers consisted mainly of decorative artwork around the editorial but gradually, over the following years, with more space and colour printing available, they have become increasingly entertaining, light-hearted and sometimes whimsical, but always lively. The longer you look, the more detail you see. We have been privileged to enjoy many of these intricate masterpieces but, sadly, Bob feels that this one should be the last, as it is demanding and time-consuming work. They have been much appreciated and we wish to thank him heartily for his generous contribution to this village magazine.

In this issue Judith Simpson writes about her long walk to Glasgow, the good moments and the bad ones. The verdict seems to be that COP26 moved in the right direction but not far enough. Here there are signs that a degree of normality is returning after the lockdowns. We have reports of a well-attended Remembrance Ceremony at the war memorial and a successful poppy appeal. The Gardening Club reports on its AGM. The FROGS' maintenance work in the churchyard continues, as does the conservation of the Heath Lobelia. Both churches provide information about coming events and services, and there is news of a Kilmington visit from Father Christmas. The Kilmington Players look ahead to providing some more of their own special brand of entertainment after the prohibition imposed by Covid and they are hoping that by Christmas 2022 there might even be another pantomime on the way!

We also have articles from two Parish Councillors endeavouring to avert potential disaster. Concern about safety on the A35 is not new, but now Devon County Council proposes to withdraw free school bus transport to the Axe Valley Academy next term. Since writing, Mark and Peter have twice counted vehicles using the road between 7.45 and 8.30 am, when pupils would be making the journey, and totalled 900 on one morning and 945 on the other. In Mark's School Bus article you can find information about contesting the decision.

By last December Moviola film nights had become unviable and a Crowdfunding project was just beginning for the equipment to run the films. Now the Kilmington Community Cinema has been up and running since June with an evening show, a matinee and even cream teas. 'Dream Horse' is the film this December and congratulations are due to all involved.

The next Postscript will be for February and we wish everybody a very happy Christmas!

Janfryd

Front Page - Bob Farley

Centre Pages - Marie Gardner

CONTRIBUTIONS TO POSTSCRIPT

Please remember to use the email address for Postscript:

postscript@kilmingtonvillage.com

Alternatively, please give your item to any team member.

The closing date for submitting items for the February issue is 15th January 2022. All will be acknowledged. Please email or ring 01297 639115 if not acknowledged within 48 hours.

POSTSCRIPT TEAM

Editor

Janfryd Gordon-Kerr 01297 639115
janfryd@gordon-kerr.org.uk

Team

Peter Ball 01297 32631
mycraigyd@aol.com

Valerie Harding 01297 34206
vharding38@gmail.com

Jill Collier 01297 32390
summerleaze@hotmail.co.uk

Gill Heighway 01297 33951
gillheighway@gmail.com

Marie Gardner
m.gardner6819@gmail.com

Gill Perkins 01297 32888
john.perkins444@btinternet.com

Distribution

Diane Overton 01297 33569
diane.overton@outlook.com

Treasurer

Vicky Larcombe 01297 33858
vlarcombe30@aol.com

Postal address

The Granary, George Lane, Kilmington, EX13 7RT

Printed by Axminster Printing
01297 32266

Postscript is published 10 times each year and is delivered free of charge to every house in Kilmington. Almost all items in the magazine come from the village community who are very supportive of the magazine.

The Postscript team are all volunteers and your donations, together with fees from advertisers, are used to pay for the cost of printing.

DONATIONS

Arrangements for donating to Postscript have changed as a result of the closure of the village shop. Please see page 22 for details. Donations to the middle of October came to £4.20. All donations go towards printing costs. Thank you for your continuing support.

ADVERTISING RATES

Please see inside back cover for details.

The average cost per 28-page copy of Postscript with several colour pages is 75p.
Extra copies are available from Millers Farm Shop, where donations may be made.

Disclaimers: Items in this publication are the work of individuals and do not necessarily reflect the thoughts or opinions of the editorial team. The editorial team reserves the right to make small alterations to items submitted. Contributors are responsible for ensuring that parental permission has been obtained before pictures of children are submitted for publication.

The content of advertisements is not the responsibility of the editorial team. Queries should be addressed to the advertiser. This publication is online at www.kilmingtonvillage.com. In addition, earlier issues will also appear online from time to time.

UPDATE ON THE ‘A35 ROUTE SAFETY STUDY’

Recently residents have once again raised the issue of the safety of the A35 as it runs through our village. David Vickers spearheaded this campaign, working with Emma Styles until they recently left the village, so I’m picking up from where they left off. Here is an update of what I know to date:

The A35 is operated and managed by Highways England (HE); the other roads within our parish are the responsibility of Devon Highways.

For those of you who have moved to Kilminster since October 2020, this will appear as new information. For those residents who read the October 2020 Postscript, what follows will look remarkably familiar. That’s because, sadly, there seems to have been very little action from HE.

In 2014 the village rallied together to highlight the issue of safety once again to HE. Surveys were undertaken.

In 2016, it was agreed that there was indeed a safety issue, suggesting the speed limit should be lowered to 40mph. At this stage we learnt that other communities along the A35 were also campaigning for improvements.

In 2019, we were told that Kilminster and Wilmington would not be considered alone for improvements but they would be amalgamated into a much larger study from Charmouth Roundabout to Honiton. The parishes involved are Offwell, Widworthy, Shute, Dalwood and Kilminster. It was also suggested that there was potential for “new technology” to be used such as average speed cameras to reduce speed and thereby hopefully reduce collisions across this whole section.

For Kilminster a 40mph speed limit and a crossing would also be considered – but this was by no means certain.

The Highways England Route Manager for the South West region issued a note in September 2020. He described the A35, in terms of safety, as being the 8th worst performing Strategic Route Network (SRN) in England (according to 2015 information) and the worst performing SRN route in the SW, in terms of safety. But he also pointed out that the A35 relative route safety performance is in comparison only

with other SRN roads and does not include routes managed by local highway authorities. He also emphasised that England’s SRN is one of the safest, if not safest, high speed road network in the world.

By now you’ll have gathered that this is a very slow process. However it would appear that we have indeed got through the first stage of ‘recognition of need’. The HE team have since been making further feasibility studies to establish the infrastructure costs and estimated benefits of such a scheme across this Charmouth to Honiton section of the A35.

Highways England aimed to commence detailed design in 20/21 to 21/22 but the whole project was subject to funding. The timescales continue to stretch and we were advised that construction/delivery of a scheme would be in 2023/24. As always this was dependent on their feasibility/costing business case and I’m guessing there will now have been further delays with the inevitable Covid-19 business disruptions.

We hope that you appreciate that these are the details we have from Highways England. I have been trying to get an update for a couple of weeks prior to writing this but there is a new route manager now who ‘is currently out of the office and will reply on his return’. We will update you with the latest progress as soon as we get it. The Parish Council will continue to pressurise Highways England, as much as we can to ensure that improving safety of the A35 is a high priority for them.

VILLAGE 20MPH SPEED LIMIT

As the draft Kilminster Neighbourhood Plan stated, the Parish Council is also keen to progress the Community Action Project to present a case to Devon Highways to reduce our existing village 30mph speed limit to 20mph. We need support from residents to develop this and also continue the A35 pressure. If you are willing to help in some way please let me know.

Peter
pball@kilminstervillage.com

ON THE FRONT COVER

We are invited to contemplate the predicament of Father Christmas who was delayed by Covid restrictions from making his Christmas pudding on ‘Stir up Sunday’ on 21st November, the last before Advent. The Collect (prayer) for that Sunday, begins, ‘Stir up we beseech thee O Lord, the wills of thy faithful people’... (to ‘good works’ actually, rather than pudding!). The calendar shows 24th December, it is already dark outside, the first reindeer is getting anxious and there are still ingredients waiting to be added. In a nod to diversity Bob has made him left-handed, which could make it harder to stir clockwise, as the more superstitious traditions require, and things are getting messy. Time presses and he has a long journey ahead of him.

Janfryd

CHARITY CHRISTMAS CARDS

The organisers of the ‘Cards for Good Causes’ regret that they will not have a shop in Axminster this year. They would like to remind you that it is still possible to obtain cards from the various individual charity shops and from the charities’ websites on the internet.

Diana Church



KILMINGTON SKY AT NIGHT

Once again a good chance to see planets and meteors during the two months ahead.

DECEMBER

3rd Venus is at its brightest for 202. You can't miss it if you look west after sunset on any clear evening around now. The lighted crescent portion of the planet visible from Earth will cover its greatest area on our sky's dome giving its greatest brilliancy.

4th New Moon. The Moon is located on the same side of the Earth as the Sun and therefore will not be visible in the night sky. This is the best time of the month for star-gazing because there is no moonlight and faint objects such as galaxies and star clusters can be seen.

6th and 7th Venus near to the moon

7th and 8th Saturn near to the moon

8th and 9th Jupiter near to the moon

13th and 14th Geminids Meteor Shower, the king of the meteor showers, producing up to 120 multi-coloured meteors per hour at its peak. It runs annually from December 7th-17th. The waxing gibbous moon will block out most of the fainter meteors, but the Geminids are so numerous and bright this could still be a good show. Best viewing is after midnight.

19th Full Moon usually known as the Cold Moon.

21st December Solstice. The South Pole is tilted toward the Sun, which will have reached its southernmost position in the sky. This is the first day of winter (winter solstice) in our Northern Hemisphere and the first day of summer (summer solstice) in the Southern Hemisphere.

21st and 22nd Ursids Meteor Shower peaks. The nearly full moon will mean only the brightest meteors will be visible. The Ursids is a minor meteor shower producing about 5-10 meteors per hour from the dust grains left behind by comet Tuttle. It runs annually from December 17th to 25th. Best viewing is just after midnight.

25th Fast moving Sleigh crosses the night sky.

JANUARY

3rd and 4th Quadrantids Meteor Shower. The Quadrantids is an above average shower, with up to 40 meteors per hour at its peak. The shower runs annually from January 1st-5th. It peaks this year on the night of the 3rd at around 22.00 and morning of the 4th. The thin, crescent moon will set early in the evening leaving dark skies for what should be an excellent show. Best viewing will be from a dark location after midnight. Meteors can appear anywhere in the sky.

6th Jupiter and the moon appear close together

17th Full Wolf Moon

18th and 19th γ-Ursae Meteor Shower will be active from 15th to 25th January. It's likely to produce its best displays shortly before dawn on 19th. As we're only just past full moon and there are only around three meteors an hour, you'll be lucky to see one.

29th Mars and the moon appear close together.

Peter

FIVE ALIVE OIL SYNDICATE

Please note that there is no oil order in December. The January 2022 order falls on Friday 7th.

Please submit requests for an exact amount or if ordering either a 'top up' or a full tank then please furnish me with an accurate estimate with a minimum order of 500 litres in all cases.

Colin Stewart
01297 792538
cogstewartcs@gmail.com
cogstewart@aol.com

VILLAGE HALL '100+' CLUB

The winners of the draw held on
26th October 2021

J Nickolls	£30	M Hurford	£5
N Bond	£15	C Dare	£5
D Seward	£15	H Stevens	£5

For further details, please contact
Jean Falconer - 01297 33708

CHRISTMAS TREES WANTED

The animals and birds at Axe Valley Wildlife Park would be pleased to have your Christmas trees, after you have taken the decorations off, to have in their pens for shelter and play.

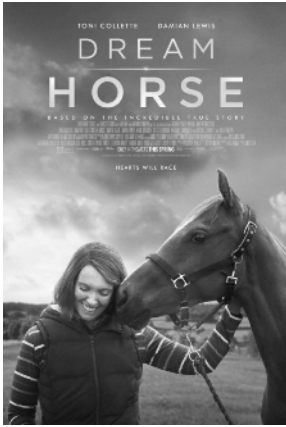
Please drop them off at the Wildlife Park or we can collect them 01297 34472.



MOBILE LIBRARY

Tuesday, 14th December and 25th January 2022 at 11.20 - 11.50 am The Street

KILMINGTON COMMUNITY CINEMA



DREAM HORSE (PG)

Kilmington Village Hall
Wednesday, 8th December
& Thursday, 9th Matinee



Janet (Toni Collette) and her husband Brian (Owen Teale) buy a mare for £1,000. They then bring the mare to Kirtlington Stud in the UK so she can be bred with a racing stallion. Of course this is expensive. Jan convinces her neighbours to chip in their earnings to help out. Ultimately over 20 different people joined the ownership syndicate. The ensuing offspring is aptly named Dream Alliance. The foal is then brought to trainer Philip Hobbs (Nicholas Farrell). The expectation is that they might raise a racehorse to compete amongst the champions of the privileged class. "Remember, there's a less than one percent chance this horse will ever win a race." Howard cautions.

Toni Collette really must be cited for her flawless performance. The actress is simply captivating. Whether pleading for a risky medical procedure that could prolong the horse's life or deciding whether to enter him in yet another race, she is eminently relatable. Collette radiates warmth and enthusiasm with utter sincerity. As Janet, she can be aggressively enthusiastic but also vulnerable. Few actors can convey all this with such ease. She manifests these emotions with authenticity. It never comes across like acting. The rest of the ensemble rise to her level. The coterie of working-class investors includes a lonely widow (Siân Phillips), the town drunk (Karl Johnson), and a resident know-it-all (Anthony O'Donnell). Misfits all, we truly want to champion the citizens of this Welsh village.

Today, the Vokeses live in the same house in Cefn Fforest and Jan still has two jobs. Dream Alliance's wins netted just £1,430 each for the syndicate members, but it was never about the money.

Wednesday Doors open 6.45 pm with the evening's entertainment starting at 7.15 pm and ending about 9.30 pm. Pre-booking is no longer required but is helpful for the organisers.

The Thursday matinee will have limited seating and require pre-booking. For these performances we ask that masks are worn until you are seated, and refreshments will be brought to you. We hope this will encourage those who need to take extra health care to feel confident that they can come along and enjoy a film and have a cream tea/ice creams/tea/coffee, during the interval. The cream tea must be booked when booking the seat. The doors open at 2.00 pm, the film commences 2.15 pm and ends about 4.30 pm.

Please state Wednesday or Thursday. Tickets Pre-booked £5 or £5.50 on door.

To Book: Tel: 01297 639758 leave contact details and booking will be confirmed, or email: wattsjohn307@gmail.com

See <http://www.kilmingtonvillage.com/moviola.html> for more information.

No film in January

FESTIVE TITTERS

What do you get when you cross a Christmas tree with an apple?

A pineapple!

What do snowmen eat for breakfast?

Frosties!

What happens if you eat Christmas decorations?

You get tinselitus.

What do you call Santa when he stops moving?

Santa Pause.

What happened to the thief who stole a Christmas calendar?

He got 12 months.

What's the forecast for Christmas Eve?

It's rain-dear!

What did the grumpy sheep say when his friends wished him a Merry Christmas?

Baaaa humbug!

What's the difference between the Christmas alphabet and the regular alphabet?

The Christmas alphabet has No L.

What do you get when you cross a snowman and a vampire?

Frostbite.

What does an elf work on after school?

His gnome-work.



FROGS – A SUCCESSFUL OCTOBER WORK PARTY AND A FURTHER SESSION PLANNED FOR DECEMBER

FROGS – the Friends of St Giles' Churchyard – held the latest of its regular work parties in the churchyard on the morning of Saturday, 23rd October. This proved to be the most successful of the sessions to date: the weather was kind and there were 15 volunteers present, of whom no fewer than eight were first-timers, and, of these eight, six were men, all of whom we hope will prove able to operate the mowers and trimmers. If so, this will greatly reduce the pressures on our regular mowing and strimming team. The 15 volunteers were very well looked after with mid-session hot drinks and cakes, courtesy of the catering team of Christine Thorne, Jean Thorne and Sheila Hill. Sheila has been a popular and hard-working member of the team, but this was to be her last appearance; she has decided to take a well-earned retirement.



Jean presented Sheila with a bouquet of flowers and some presents to mark the occasion.

The work programme for the party was varied, with some mowing and strimming, but the concentration was on the trimming of shrubs and the clearing of brambles, ivy and weeds. There was some gathering up of the autumn leaves, but the big

falls are yet to come. With this in mind, a further work party will be held on Saturday, 11th December, following the usual format – two hours starting at 10 o'clock, with a mid-session break for hot drinks and cakes around 11 o'clock. We are always happy to see new faces; just come along with protective gear and a pair of secateurs. Any heavier equipment will be provided by FROGS.

David Ingles
Treasurer and Membership Secretary



FATHER CHRISTMAS IS ON HIS WAY



Ho, Ho, Ho, Father Christmas is coming to Kilmington again this year on **Friday, 17th December!**

Father Christmas will be driving through the village on his sleigh, handing out sweets and supplying lots of festive cheer. The procession will set off from the New Inn at **6.00 pm** where hot chocolate, mulled wine, mince pies and plenty of beer will be available to purchase.

Please wrap up warmly in your Christmas best and be outside to meet and greet Father Christmas and his Christmas helpers who will be happy to accept any donations on behalf of Royal British Legion.

Father Christmas is very much looking forward to seeing you all. So please come outside to greet him and enjoy all the Christmas cheer on offer on the 17th.

A gentle reminder, please, it is everyone's responsibility to comply with COVID rules as they apply on the night.

We look forward to seeing you.

Denise Makin

Joy to the World!

Christmas Services
at the Beacon, Kilmington 2021

Family Nativity Service
Sunday 19th December - 10:30am
Come and join us for a unique retelling of the Christmas story on a virtual trip to Bethlehem. Come to watch or get involved as the story unfolds! There will be puppets, drama, and fun for all ages!

Family Carol Service
Wednesday 22nd December - 6:30pm
Enjoy your favourite festive songs and tasty treats. Families will receive an activity pack where children 'build the nativity story' as the service progresses. There will also be a best Christmas jumper competition!

Christmas Celebration
Saturday 25th December - 10:00am
A short fun filled celebration to help you celebrate Christmas Day. Bring your favourite gift along to show everyone, and sing festive songs!

beaconbaptist.co.uk BeaconLife @BeaconLifeInsta 01297 631638

Rev Julie Lomas
St Giles' Church
Kilminster
01297 35004
07488 278 483
revjulielomas@gmail.com



Letter from the Churches

Pastor Mike Hudson
KBC Church Office
Kilminster
07957 738 211
mike@beaconbaptist.co.uk

By the time you read this, it's likely that many Christmas trees will be up in the village. Multi-coloured lights will adorn windows. Christmas lists will be zooming their way to the North Pole. Nativity scripts will be rehearsed and rehearsed again. And many children (and some big children like me!) will be gazing out of the window daydreaming of a white Christmas.

As a church it is a busy time of year. On **Sunday, 19th at 10:30 am** we have our All Age Nativity, which is a chance for young people from the village and surrounding areas to come along and get involved in the Christmas story. This year we are flying on our virtual (much better for the environment!) aeroplane to Bethlehem. Then on **Wednesday, 22nd at 6:30 pm** we will have our family carol service. It will be a fantastic opportunity to come together for fun and to enjoy some of your favourite festive tunes and treats! Our celebrations will be completed on **Saturday, 25th at 10:00 am** with our short family Christmas Day celebration. It would be great to be able to gather as a community and welcome you to some or all of those services!

But did you know that there's actually a condition called the 'post-Christmas-blues'? It turns out that so often we can put so much time, effort, and resources into this time of year that we often end up feeling burnt out, deflated and as if the festive season never quite lived up to our grand expectations. It often turns out the things that we indulge in which we

think will bring fulfilment, often leave us feeling a bit... 'bleh'.

And that's why the real message of Christmas is so important. It's less about snow, more about a Son being born. It's less about presents, more about the presence of God with his people. It's less about flashing lights, and more about the light of the world shining into the darkness of a hurting world.

There is a place for all the fun, the frolics and the feasting, but it's not the full story. It's not the reason why each year we might get a small tingle of something bigger than us, drawing us in. It's not the reason why the Prophet Isaiah wrote hundreds of years before that famous night in a stable; *'The people walking in darkness have seen a great light; on those living in the land of deep darkness a light has dawned.'*

So enjoy being with those you love the most this Christmas. Look out for those in our community who might be lonely or struggling. Enjoy the little things. Don't stress about the unimportant stuff too much. And as you look into the dark, and the cold and see the piercing and hopeful lights shining back, remember: God entered the mess of a stable, a world in longing, to show that there is a greater hope in the midst of fear, worry and darkness.

Praying you have a fantastic Christmas, and a blessed New Year.

Mike Hudson

MESSY SPARKLERS

We have a variety of people who come to Messy Sparklers, from all over the Axe Valley. Mums, dads, grandparents and friends come along with their babies, toddlers and pre-schoolers. It is wonderful to see the children grow and enjoy the range of activities.



Our story in November was Moses and the burning bush, which we linked to light and fireworks. Amazingly, for our November session, we were able to have some of our activities outside – always a blessing when it comes to clear-up time! It makes life much easier when our water play (bubbles and biodegradable glitter) and the pulses, which seem to get everywhere, can be outside.

Inside, the children painted firework pictures, made tissue paper burning bushes, and played with dough. The chairs in the worship area are moved to one side to make space on the carpeted area, there we had our dark den, story books and baby toys. The children are free to choose what activities they want to do. That is also where story and sing time takes place before lunch.



Messy Sparklers meets every 1st Tuesday during term time, so our next sessions are on **Tuesday, 7th December** and **Tuesday, 4th January** (term time for some schools). We start at 10.30 am and finish at 12.30 pm, we ask for a donation of £2 for the first child plus £1 for each additional child which includes lunch for both the child and their adult. If you aren't on our mailing list, please contact:

children.youth@beaconbaptist.co.uk to receive a booking email. Remember to dress for mess!

We'd also like to invite you to our Nativity on Sunday, 19th December @ The Beacon. Flight 101 to Bethlehem takes off at 10.30 am where we go on a little trip to find out *'What's the Fuss?'* There will be the opportunity for children of all ages to be involved, they can come along dressed as a shepherd or angel to take part and will be invited to join others as they sing *Away in a Manger* and *Twinkle Twinkle*. Adults, please remember your mask when you 'board the flight'.

Juleta Obudo

ST GILES' CHURCH OPEN TOWER MORNING

During the early hours of October 30th, with the rain and wind lashing against the bedroom window, I was wishing we had not organised for folk to visit the church tower and ROOF! to hear about bellringing.

Well, it could not have been a lovelier morning, no wind, no rain and plenty of sunshine so a steady stream of visitors climbed the 58 steps onto the roof to enjoy the panoramic view stopping off in the Ringing, Clock and Bell Chambers en route. St Giles' bellringers and a few other helpers were on hand to explain about our bells, the chiming system, the clock and much more. Hot drinks and cakes were eagerly enjoyed whilst watching a video, viewing the display boards and reading a 'Short History of St. Giles' Church Bells' written by Richard Norman. Thank



Celia Dunsford in the Ringing Chamber



A view of the Graveyard from St Giles' Church Roof

you to everyone who visited, donated to our bell maintenance fund and helped on the day.

A number of people expressed an interest in 'having a go' at bellringing to learn this ancient skill and make music on bells, some of which are over 300 years old. There will be posts on Kilmingston Now on Facebook when we have learner practice sessions taking place so that you can go out if you wish!

If you would like to know more or weren't able to attend the open morning, please get in touch – we are a friendly bunch!

Celia Dunsford
01297 33563

COMING TO THE BEACON IN 2022

Starting Thursday, 13th January 2022 at 7.00 pm

Alpha is a 12-week course that creates space for people to bring their friends for a conversation about faith, life and God.

Each week will start with the group sharing a meal.

Contact: administrator@beaconbaptist.co.uk for more information.

Celebrate Together
St Giles' Church, Kilmingston





Theme – Christmas is coming
Saturday at 3pm
11th December 2021

Invites you to a service for all, especially for
people with learning disabilities, their
support workers, families and friends

With TEA after!

Please note that there is ample parking and level access





Christingle Service

St Giles Church

3pm Saturday
December 18th



All welcome

Cookery Corner

I always buy too much and cook too much food over the Christmas period and end up having various bits and pieces left in the fridge which need using up and like everyone else, I hate to waste food. So, this month I have included two recipes which use 'left-overs' from Christmas lunch. Although to be honest the trifle is so good that I will buy a pudding especially to use in that recipe. The Boxing Day bake is for those who really do not like cold turkey and would prefer something hot but don't want to spend ages cooking on Boxing Day. The Rice Krispie pudding cakes look really effective and are ideal for younger cooks to make. They are a nice alternative to fairy cakes as a Christmas treat.

BOXING DAY BAKE

Serves 4

1 tbsp olive oil
25g/1oz butter
1 onion chopped
50g/2oz plain flour
6 pigs in blankets, cut in pieces
300g/12oz shredded cooked turkey
6 stuffing balls, quartered
150ml/6floz white wine
500ml/20floz chicken stock
1 tsp Dijon mustard
100g/4oz crème fraiche
800g/32oz roast potatoes cut into pieces
50g/2oz cheddar cheese, grated
Salt and pepper

Method

1. Heat the oil and butter in a large frying pan, add the onion and cook gently for 10 minutes until the onion is soft. Stir in the flour and cook for 1-2 minutes. Slowly add the wine, stirring all the time, then add the stock and simmer for 5 minutes. Season with salt and pepper.
2. Add the turkey, pigs in blankets, stuffing, Dijon mustard and crème fraiche to the sauce, mix well and pour into a large ovenproof dish.
3. Top with the potatoes and sprinkle with the cheese.
4. Bake at 170C fan/180C /Gas 5 for 30-35 minutes.



CHRISTMAS PUDDING TRIFLE

Serves 6

3 oranges
1 tbsp demerara sugar
2 tbsp brandy or Grand Marnier
400g/16oz leftover Christmas pudding
500g/20floz pot of fresh custard
250g/10oz tub of mascarpone
300ml/12fl oz tub of double cream
2 tbsp toasted flaked almonds

Method

1. Peel the oranges and slice very thinly, place on a large plate. Sprinkle with the sugar and the Brandy or liqueur.
2. Chop up the Christmas pudding and put in the bottom of a trifle bowl and top with the orange slices and liqueur mix.
3. Beat the mascarpone until smooth, stir in the custard and pour over the oranges.
4. Whip the cream and spoon over the custard. Sprinkle with the flaked almonds.
5. Chill until ready to serve.



RICE KRISPIE CHRISTMAS PUDDING CAKES

Makes 12

Ingredients

50g/2oz Rice Krispies
50g/2oz sultanas or raisins, chopped
50g/2oz unsalted butter
1 x 110g bar of milk chocolate
2 tbsp crunchy peanut butter
37g/1½oz white mini marshmallows
75g/3oz white chocolate
Edible holly leaves and berries decorations



Method

1. Put the butter, milk chocolate, peanut butter and marshmallows into a pan and heat gently until the butter and chocolate have melted but the marshmallows are just beginning to melt and get sticky. Remove from the heat.
2. Add the Rice Krispies and the chopped dried fruit and stir well to coat.
3. To shape the puddings; either form them into to golf ball sized balls using your hands, or a less messy way is to line an egg cup with clingfilm, place a tablespoonful of the mixture on the clingfilm, shape and then lift into the paper case. Once all twelve are formed, put to one side to set.
4. Melt the white chocolate and spoon a small amount on top of each pudding and decorate with holly leaves and berries.
5. These will keep in a tin for up to 3 days.

Diane Overton

SAVE THE AXE VALLEY SCHOOL BUS!

Devon County Council propose to withdraw free school transport for students living in Kilminster attending Axe Valley Academy after the Autumn term. This would mean students crossing the A35 at Kilminster Cross at some of the busiest times of the day, and in the dark during the winter months. In a survey report conducted by DCC in 2009, the walking route to Axminster was considered unavailable, due mainly to the danger of crossing the A35. This road has only got busier since that time, and a meagre speed reduction of only 10mph (imposed since then) makes little or no difference to the safety of anyone crossing the road. Walking along the narrow pavement on Gammons Hill is in itself dangerous and frightening. With large lorries passing within 10cm of the kerb at 50mph, the turbulence caused is more than enough to drag an adult off balance.

Kilminster has campaigned for many years for a further speed reduction and a safe crossing on the A35, neither of which seem to be forthcoming. DCC suggest using the cycle route via Southview Lane as an alternative, but as signposts



highlight on all approaches to this route, it is liable to flooding, and the underpass is often ankle deep in sludge. This route is also unlit and remote, making students' safeguarding a problem.

Axe Valley Academy is our local catchment school, and although Kilminster is slightly under the three mile threshold, below which transport provision is not obligatory, the walking routes to school are not safe.

There is a petition online at <https://chnng.it/zydGWhfK> to

object to this decision and lobby DCC to save the Kilminster to Axe Valley Academy bus! If you are able, please sign it and add your support.

Alternatively if you feel strongly about this, please write to:

Matthew Joll, Senior Transport Coordination Officer,
Transport Coordination Services, DCC, County Hall,
Topsham Road, Exeter, EX2 4QD.

Many thanks.

Mark Jones

KILMINGTON POPPY APPEAL 2021

This year Remembrance Sunday and the submission date for Postscript articles clashed and to compound the problem we were not able to count the collection until the week after. Therefore, regrettably we are unable to tell you in this report how much we have raised. However, we will publish the total on the village notice boards.

You will be aware that we hand-delivered a Gift Aid envelope and two poppies to every house in the village. Looking at the pile of envelopes waiting to be opened, this appears to have again been successful and of course we have no way of knowing how many of the village donated to one of our static locations or direct to the British Legion. Our sincere thanks to the team that delivered the envelopes: Jean Falconer, John Watts, Jenny Nickolls, Louise Quincey, Jennie Giles, Carole Bolton, John and Pat Martell, Avis Lockwood, Lesley Rew, Claire Dainton, Louise Wood and Richard and Sally Beckett. We welcomed a new member to the team; Peter Squire who delivered to the north east side of the village and managed to visit places he never knew were there. Karen Hodder had volunteered to help but fell poorly just before we started. We are pleased to say she has now recovered and we look forward to her and all our team volunteering again next year.

We are again very grateful to the team at the Baptist Church for not only taking in the donations but also for their

wonderful Poppy Display outside the Church. We are indebted to Millers Farm Shop for allowing us to set up a stall on the first Saturday of the collection and to place a collection tin on every till point. Thank you also to St Giles' Church, Kilminster Primary School and our local businesses: The New Inn, Old Inn, A35 Pit Stop, Texaco Garage and Starbucks for their support. And finally thanks to our Branch Chairman, Stafford Seward, and his wife Di, who on the middle Saturday toured the village in his 'gator' utility vehicle festooned in Legion regalia.

The Royal British Legion provides support for members of the Royal Navy, Army, Royal Air Force, veterans and their families. In 2021 we are marking 100 years since the nation's collective Remembrance traditions were first brought together, such as the poppy, two-minute silence, Armistice Day, the service for the Unknown Warrior, and the march-past at the Cenotaph. By making a donation you are helping those in need within the Armed Forces community.

Thank you all for your support.

Louise and Peter Wood
Poppy Appeal Organisers
Royal British Legion Kilminster Branch

NATURE NOTES

WILD MUSHROOMS AND OTHER FUNGI

In Kilmington, November now is the prime month for seeing fungi around the village. (It used to be October, when the climate was so much colder. Are you old enough, like me, to remember as a child needing gloves and lots of treats to watch firework displays on very frosty November nights?)

Wild mushrooms in quantity are also a great rarity, as are 'unimproved pastures' where they used to grow. Some monsters have appeared this year by the bus stop in the grass piles left there after mowing. If it wasn't for the A35 close by, I would have been tempted to collect some to cook, as they looked like the large red-staining variety with scaly brown caps, which are normally particularly delicious!

The fungi highlights of Kilmington village over the years that I've noticed are: occasionally, large horse mushrooms emerge by the allotment gate, presumably someone in the past was clumsy delivering horse manure to the plots! In hedges and roadsides close to the allotment, single giant puffballs miraculously appear most years. Children, I've assumed, still find it irresistible to 'put the boot in' on their way to joining the school bus. Staying with the allotment – boletes, those are the mushrooms with pores not gills and with brown caps cracked red and yellow as they get older, occur in allotment beds close to the hedgerow oaks in late Summer. They are there to 'help' the small acorns grow under the 'parent' trees and are not edible, unlike the revered Penny Bun Bolete. Has anyone found one of these close to the village in the past and eaten it?

Surprisingly, under the small beech trees along the A35



Sulphur Tuft on buried wood - raised bed allotment

footpath after the Old Inn bus stop, many unusual fungi surface - field blewits, white saddle – a false morel and white inocybe/fibre-cap, this is a poisonous species. There are also delightful troops of white conecaps. (The exciting St George's Mushrooms also troop along here in Spring, close to 23rd April – give or take a few days). Fungi generally like beech because there's few green plants to compete under the heavy shade.

Unfortunately the more vigorous management by Devon

Highways of removing overshadowing branches and cutting and leaving the summer vegetation underneath, means that the fungi are disappearing. I suspect that the soil under the trees hasn't been disturbed over many years, essential for these fungi to take hold and spread.

Finally, one of the greatest displays of wax caps I've ever seen and enjoyed for their varied striking coloured caps, appeared on the cricket outfield a few years back! It was after several heavy winter frosts, the very short grass became studded with several species in yellows, scarlet and white. Given the white background of the frozen grass it was especially reminiscent of the Christmas decorations adorning local houses.

What fungi have you seen, particularly in your gardens this autumn?

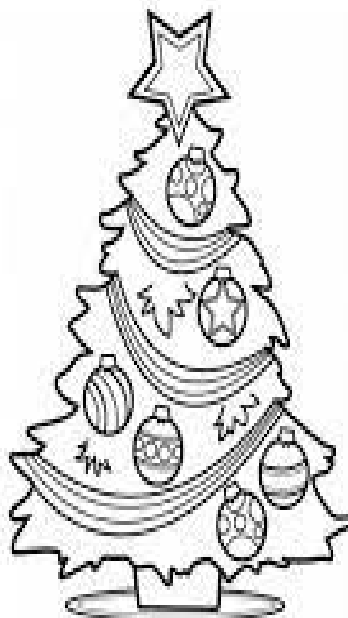
Let me know.

David Simpson

davidthomsimpson@waitrose.com

01297 32694

O
Christmas
tree, O Christmas
tree, how lovely are your
branches! In beauty green
will always grow, through summer
sun and winter snow. O Christmas
tree, O Christmas tree, how lovely are
your
branches!



I
wrote
a poem
in the shape
of a Christmas
tree but then forgot
to water it and only a few
days
later
there were all
over the carpet

REMEMBRANCE AND CHRISTMAS FAIR

What a difference a year makes. Thank you to all those who joined us on 11th November to witness the two minute silence (and dodge the maroon sticks) and to Claire for providing some lovely refreshments.

Likewise, it was fantastic to see so many at the Beacon for the Remembrance Service and our thanks go to Mike Hudson and all the helpers at the Beacon, along with Julie, our new Vicar, for providing such a memorable service and refreshments. Our thanks also to all those who turned out for the act of Remembrance at the War Memorial; with over 80 attending this was the biggest turn-out for many years. Sadly, just after the service we learnt of the passing of Ron Foster. Ron was a great supporter of the RBL and served on the committee for many years. He will be remembered as one of the stalwarts who would volunteer and help with anything. Our thoughts and prayers are with his family. I would also like to take this opportunity to thank Peter and Louise Wood and all their helpers for organising the Poppy

Appeal, I will not go into detail as I know Peter will provide us with an update as soon as it is possible. This year we were also able to return to Haselbury Mill for our remembrance lunch. Again, my sincere thanks to Jean for organising everything so efficiently and to all those who attended, it was nice to see the barn so festive and appealing.

I am sure that I do not need to remind you that Christmas is approaching (only 40 days to go) and am happy to inform you that our Christmas

Extravaganza is back and will last a little longer!! Look out for the posters and adverts (there is one in this edition). In brief, on Saturday, 4th December 10.00 am – 1.00 pm the Village Hall and the garden outside will be full of Christmas cheer, offering cakes and other delicacies as well as hot food and other Christmas goodies. Tea,



coffee and mulled wine will also be available as usual, so please come and support us and start Christmas off as we always used to, with all your friends.

It goes without saying that we welcome anyone who would like to join us, but especially the younger community who I am hoping, will take up my challenge and make this organisation something they would be proud to be a part of.

To complete our year, please watch out for Father Christmas and his helpers on Friday, 17th December when he will be making an early pass through the village to collect all your letters and Christmas wishes. Finally, we would like to take this opportunity to wish all of you, a 'Very Merry Christmas and Happy and Prosperous New Year.'

Take great care and stay safe.

Cdr Staff Seward OBE RN Rtd
Chairman

07799612557

E-mail t60sas@hotmail.co.uk



CLIMATE CHANGE

I am very concerned with regard to what is happening with our planet. I wonder how many others have the same concerns. I try to do my small part to help rectify the damage that has been done, which I have contributed to. I have the excuse that I did not know what harm was being done, however, it is now becoming clear what damage has been caused and what damage continues to happen. I do not want my legacy to be that I was part of the generation that caused irreparable harm to this wonderful blue green planet of ours. I want to do all that I can to leave this world in a better condition than it was in when I was born.

There are solutions out there which help prevent further damage and some which are starting to repair harm that has been done. I am currently watching the 'Earthshot' series which features Prince William and David Attenborough, amongst others. I find the programmes to be extremely interesting. I am at first dismayed with what I see and then am delighted to see that projects are happening right now across the globe. These projects are helping to repair our planet and to give us a more sustainable future. I applaud all of those involved.

My family are starting to recycle more and we try to purchase new items and food more responsibly. When we purchased our new home in Kilmington last year we were lucky enough to have Solar Panels on our roof. These currently generate enough power to cover almost 40% of the power that we use. We purchase the extra power through a

company who ensure that the power we use is generated via renewable sources (such as via wind and sun). The extra power that we generate (that we do not need at the time) goes back to the grid. Currently, since February this year (when I was able to start seeing power generated versus power consumed/exported) we have generated more power than we have used. I expect to be driving a fully electric car by March of next year. Only time will tell if this is a good investment, or not. I know that I will be very pleased not to be burning fossil fuels whilst getting from A to B.

I would love to speak and correspond with like-minded others. I would like to share stories and experiences and to learn how to do more. I would like to become part of a group, as, whilst we can all do our little bit, I am convinced that as a collective, bigger and better things are achievable. If you would like to get in touch then my email address is chrisjonthorne69@gmail.com. I want to leave this planet in a better state than it was in when I came into it. I will do all that I can to achieve this. I want future generations to look back fondly rather than leaving them a world which is impossible to live in. I want wildlife to prosper, plants and trees to grow, the landscape and cities to be clean and free of pollutants, the air to be breathable and free of particulates and the oceans to be clean, blue, plastic-free with shoals of fish and with bright vibrant corals. Please help me to achieve this.

Christopher Thorne

KILMINGTON PLAYERS - NEWS

Like so many other groups Covid-19 put an abrupt halt to our activities and so we haven't performed since our "Supper and a Show" evening in February 2020. It seems such a long time ago!

Following our recent AGM, our committee have been putting their heads together to look at future events/productions. We can't wait to get back to rehearsing and entertaining the village but are conscious of bearing in mind the ongoing need for consideration of Covid-19. Therefore we have decided to kick off next spring with our not-to-be-missed

Quiz Evening in the Village Hall Saturday, 5th March 2022

Not only does this promise to be a fun quiz evening, maybe even with a few theatrical/entertainment questions thrown in, but it will also be an opportunity to come along and meet us and look at our displays of previous productions. Additionally there will be a surprise interval bonus! So...put the date in your diary, start planning your teams and look out in the New Year for further details/posters around the village

and on Kilmington Now.

The quiz evening will also be a great chance to come and hear about our plans to contribute to celebrations for the Queen's Platinum Jubilee in early June 2022. We would like to provide some entertainment for this as part of a programme of events being pulled together by a team of village residents, under the coordination of the Parish Council. If you would like to help/perform with this please do join us at the quiz evening or get in touch.

Last, but not least, the news many of you are waiting for! Kilmington Players are planning for the return of the village pantomime during next winter 2022/23. We are keen to bring this popular event to our village stage again but can only do this with an army of willing participants both on and off the stage. We are especially looking for actors and chorus, wardrobe/costumes and set/scenery creation. We welcome anyone with or without experience to come and join in the fun.

We look forward to welcoming you all to our quiz and future events.

Louise Quincey



THE LONG WALK TOWARDS GLASGOW - COP26

Trying to precis the experience of my walk into an item of reasonable length for Postscript has proven to be difficult. I had already written in excess of a thousand words, but that account only got me as far as preparations for the walk. Instead I will endeavour to answer some of the questions I've been asked about my route, distance travelled, stopping places, my experiences and monies raised so far.

The map shows the route which, as you will see, is pretty much due north, my reckoning being that this would be the shortest way possible, Google telling me Kilminster to Glasgow was 432 miles, my reckoning later it was more like 460 miles. I had also initially planned that I would be doing most of the walking along minor roads, and occasionally covering some distances along more major, busier roads. The reality of walking along more major roads was not fun, and I soon utilised cycle-paths, disused railways, canal paths and other rights of way when possible. Chatting to people along the way also meant that their local knowledge pointed out some short cuts which were helpful.

Having set off on 1st October in the first week, I walked to Ilminster, Aller, Cheddar, Nailsea, Aust, Chepstow, Monmouth and Hereford. 118 miles.

The weather was good for walking other than the second day, Ilminster to Aller, when there was heavy, relentless rain from 8.30 am until 4.00 pm. At the end I felt waterlogged, and there were only just enough hangers in the B&B to dry all my stuff, but overnight, dry it did. That rain-soaked day was also my birthday, David joined me for the evening and brought with him a bag full of cards, many from you in the village wishing me well on my journey, thank you so much.

One of the highlights of my walk and a stage I had been looking forward to was crossing the Severn Bridge, which I did at first light on 6th October. It was thrilling walking across the bridge at that time of day. Unfortunately a few miles on when nearing Chepstow I was caught off guard by a cyclist travelling too fast and too close without a warning bell. I fell, banging down on my side. Shaken and sore I managed to get up and realized that no serious damage had been done so carried on rather more slowly into Chepstow. I was feeling a bit wobbly, both physically and emotionally, so decided to catch a bus that day into Monmouth and my next B&B, and see how I was in the morning. I was OK enough and carried on walking the following day.

In my second week the walking took me through Leominster, Ludlow, Shrewsbury, Whitchurch, Runcorn, Orrell and Leyland. 140 miles. I walked along canal towpaths, discovered a carved dragon in a garden and stayed in a couple of decidedly less than salubrious establishments. I also heard about a polar bear who was walking to Glasgow, more about him later.



On 15th October I arrived in Preston, and during the next week walked to Garstang, Lancaster, Milnthorpe, Shap, Penrith and Carlisle. 103 miles. Again there were miles of canal walking and from the towpath I could see Morecombe Bay. I walked alongside areas of salt marsh, estuary and riversides. Glorious and very varied landscapes. On 19th October I walked into Kendal and then it was a 16 mile trudge up to Shap. That was the second extremely wet day of my trip (there had been several other days full of drizzle which were manageable). The visibility was poor, the cloud was low and the hill climb was constant. That was the longest of my walking days and my relief at arriving in Shap and a warm and comfortable pub with a bed for the night was immense. It was a cold and bright walk into Penrith the next morning and the same for the walk into Carlisle the following day.

22nd October was another milestone. I crossed into Scotland and into Gretna. 371 miles. Up to this point I had been booking my accommodation a week ahead. It was becoming increasingly difficult to find somewhere to stay the nearer I got to Glasgow. I also found that the nearer I got to Glasgow accommodation was becoming much more expensive. After considering my options and having at least crossed into Scotland I decided to stop walking. Instead I brought forward my arrangement to stay with friends near Glasgow and took a train to West Kilbride on 24th October. I was disappointed, but at the time it was the right decision for me.

A couple of good things though, sometimes life works that way. In the centre of Carlisle I encountered Clarion, the polar bear I referred to earlier, and his friendly human Bamber. They had set off from Bishops Castle in Shropshire and were walking to COP26. Clarion is a ten foot high Polar bear made out of thin bamboo covered with layers of tissue paper sealed with PVA glue. I helped carry him with three other people to the river Eden in Carlisle. From there he was taken off his plinth and laid on a trolley to continue his journey. Both he and Bamber made it to Glasgow, their support vehicle following closely behind. Secondly, although I had stopped walking, my friends in West Kilbride suggested that we climb a hill before I travelled home. Of course I said yes. The hill turned out to be a mountain, Ben Lomond 974 metres high, overlooking Loch Lomond. My first Munro! The weather at the top was 'extreme', and that was their description as very seasoned hill climbers. At one point, two of the other climbers held onto me 'to stop me blowing away!' All in all it felt like a very fitting end to my walking adventure.

I learnt a great deal on my journey, some things about myself, some practical things about how to do a long-distance walk better next time (and there will be a next time). My feet walked well and by the second week were

THE LONG WALK TOWARDS GLASGOW - COP 26

comfortably seasoned into my stride. Taking a lightweight tent and sleeping bag would allow greater flexibility for where and when to stop walking each day, there were some days when I certainly could have walked further if I hadn't been limited by pre-booked accommodation. I had an interesting chat with a fellow lone walker who had a sign on her back stating that she had walked 911 miles, at the time I had walked a mere 86! I felt heartened, if not somewhat daunted, at her achievement. I was as prepared as I could be as a lone woman walking, and doing so during daylight hours. I was safe and I at no time felt threatened or concerned, and for that I am grateful. The self confidence in my navigation grew by the day, and I often cheered out loud when I reached a signpost that confirmed I was where I thought I should be. Although I was walking on my own, other than when I fell and even then only momentarily, I didn't feel lonely. I had daily telephone conversations with David. I was checking in with Mandy and Carey for Kilmington Now and many of you in the village sent encouraging texts and good wishes. Courtesy of WhatsApp I was even serenaded by the Kilmington cast of the Sound of Music whilst in my room in Leyland!!!



Clarion



Crossing the Border

My walking has also raised some money to help the important role of ARC in our local community. Many people have been very generous in their sponsorship and their supportive, encouraging comments. I will do my best to thank you all personally, for those who choose to remain

anonymous a very big thank you too. The total raised for ARC so far is around £1,500.



On top of Ben Lomond

The outcome of COP26 is now known and is frankly not nearly good enough. There is still much to do, much more to be done to ensure that all life on the planet has a real chance to survive and thrive.

If anyone has any ideas of what they feel we should do in the coming months e.g. organise an event, as a way of keeping up the momentum, please get in touch. One idea – A Post Christmas/New Year Stuff Swap - for all those unwanted and unused items in your home – re-think, recycle, re-use.

Judith Simpson

0297 32694

simpsonjudith71@gmail.com

THE GREAT KILMINGTON COMMON RAKE OFF!

Please can you spare an hour or two to help improve our local community meadow and bring a rake to help rake off the cuttings from the forthcoming autumn cut.

To improve the wildlife value of the Kilmington Common meadow, the grass needs to be cut and cuttings (risings) removed.

This would be a good opportunity to get a Kilmington Common wildlife group going to help keep the meadow wild for wildlife.

It has recently become a valuable second site for the rare Heath Lobelia wildflower (known locally as the Kilmington Lily). Traditional meadows are extremely rare habitat in UK and they need poor soils for wildflowers to thrive. Fertile soils encourage vigorous grasses to take over. We appreciate the advice on this given recently by Craig Dunton, the Land Management Advisor for the Grey Long-eared Bat Project (Bat Conservation Trust – East Devon AONB initiative). The project has been involved in a number of meadow restoration projects which are vital foraging areas for the endangered Grey Long-eared bat.

The 'Rake Date' will be in December – if interested and to get more details of date, please contact David Simpson 01297 32694 dts63allways@outlook.com



Ruth Worsley
Saving Special Species

September – Heath Lobelia bramble clear and Heath Lobelia planting task



KILMINGTON 2021 - A YEAR FULL OF CHANGES

The collage features the following images:

- Top left: A field of white snowdrops.
- Top center-left: Three carved jack-o'-lanterns.
- Top center: A group of seven men standing together indoors.
- Top center-right: A large group of people and dogs gathered on a grassy field.
- Top right: A glowing jack-o'-lantern.
- Top right corner: A landscape with trees and a body of water.
- Middle left: A scarecrow in a field.
- Middle left-center: A group of people sitting on a bench outdoors.
- Middle center-left: A large stone Moai statue.
- Middle center: A red sign that says 'ROAD CLOSED'.
- Middle center-right: Two women working on a wooden structure.
- Middle right: Two women sitting at a picnic table under a blue umbrella.
- Middle right-center: Two women dancing indoors.
- Middle right: A person in a pink jacket and orange backpack walking on a path.
- Middle right corner: Two scarecrows in a field.
- Bottom left: A field of red flowers.
- Bottom left-center: A stage with a large screen showing a blue figure.
- Bottom center-left: A small bird on a green dish.
- Bottom center: A large wooden wheel.
- Bottom center-right: Three people in church robes.
- Bottom right: A field of purple flowers.
- Bottom right corner: A field of purple flowers.

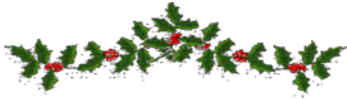
MERRY CHRISTMAS TO ALL AND A HAPPY NEW YEAR

KILMINGTON 2021 - A YEAR FULL OF CHANGES

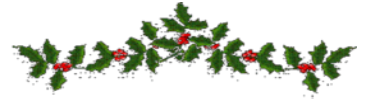
The collage features the following images:

- Top left: A field of white snowdrops.
- Top center-left: Three carved jack-o'-lanterns.
- Top center: A group of seven men standing together indoors.
- Top center-right: A large group of people and dogs gathered on a grassy field.
- Top right: A glowing jack-o'-lantern with a carved face.
- Top right corner: A landscape view of trees and a body of water.
- Middle left: A scarecrow in a plaid shirt and hat.
- Middle left-center: A group of people sitting on a bench outdoors.
- Middle center-left: A large stone Moai statue.
- Middle center: A red sign on a road that says 'ROAD CLOSED'.
- Middle center-right: Two women standing near a wooden structure, possibly a well.
- Middle right: Two women sitting at a picnic table under a blue umbrella with 'PALMERS' written on it.
- Middle right-center: Two women dancing indoors.
- Middle right: A person in a pink jacket and orange backpack walking on a path.
- Middle right corner: Two scarecrows in a field.
- Bottom left: A view of trees and a body of water.
- Bottom left-center: A stage with a large screen displaying a blue figure.
- Bottom center-left: A small bird perched on a branch.
- Bottom center: A large wooden wheel, possibly part of a mill.
- Bottom center-right: Three people in church robes standing in a church.
- Bottom right: A view of a field with trees.
- Bottom right corner: A view of a field with trees.

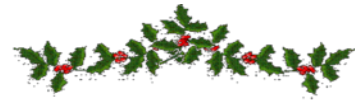
MERRY CHRISTMAS TO ALL AND A HAPPY NEW YEAR



CHRISTMAS QUIZZES



CHRISTMAS ANGEL MAZE



HAPPY HOLIDAYS WORD SEARCH

P	O	J	A	H	S	E	N	A	C	Y	D	N	A	C
R	S	S	H	O	P	P	I	N	G	M	F	K	A	S
E	E	H	W	L	J	B	L	X	M	A	F	L	H	O
S	I	I	E	I	K	C	F	N	M	D	F	F	G	S
E	V	R	R	D	L	P	O	I	M	A	P	O	S	N
N	O	T	T	A	M	O	L	I	W	L	O	N	X	O
T	M	U	Y	Y	N	Y	U	K	E	O	O	U	A	I
S	O	L	U	S	B	L	W	H	T	I	L	N	T	T
C	H	R	I	S	T	M	A	S	T	I	O	S	N	A
M	P	J	O	W	V	K	A	A	T	U	J	A	A	R
J	A	N	P	Q	C	O	O	K	I	E	S	E	S	O
B	G	G	Z	I	C	A	O	L	A	T	A	O	P	C
S	X	N	M	S	V	Z	F	R	I	E	N	D	S	E
L	U	D	J	D	Z	M	P	H	O	W	M	P	M	D
F	M	S	K	Y	P	P	A	H	I	E	N	D	S	W

CHRISTMAS ANAGRAMS

1. Congress liar (5,7)
2. In The Glints (6,5)
3. Gap Pawn Ripper (6,3,7)
4. Vicars Themes (9,3)
5. Honesty Warms Font (6,3,7)
6. Drastic Charms (9,4)
7. Smart Hereatics (9,4)
8. In Action Splash (5,8)
9. Can Assaultat (5,5)
10. Refreshed Erudite Londoner (6,3,3,4,8)

Answers on page 23

HAPPY	SHOPPING
HOLIDAYS	COOKIES
CHRISTMAS	MILK
VACATION	CANDY CANES
FAMILY	SANTA
FRIENDS	SONGS
PRESENTS	MOVIES
DECORATIONS	FUN



SUDOKU CHALLENGES



1

		5		2	
4		1			
		6	2	3	1
2	1	3	5		
			4		3
	5		6		

2

		3	2		
	6		5	4	
5	3				1
1				3	5
	1	4		5	
		5	1		

3

5	6				3			
	3		8	9				
							9	
		5		2				1
2			7		6			9
1				8		4		
	2							
				7	4		6	
			2				3	7

4

7								
	9	3		5		4	1	
					2	8		3
8					3	6		
			7		5			
		2	1					9
5		1	4					
	3	9		8		2	6	
								4

5

9			5	4			2	12			7
7	6						8				5
	10			5			12	11	2	3	
10			6	7		8		4	9		
11	12					9					
									7		3
		1			10	11				8	
					12					9	
		2	11						10		
				3	5		9				12
7	4								11	5	10
8	5	3		6		7					1

Solutions on page 29

FROM THE ARCHIVES

20 YEARS AGO

Issue 40 December 2001

EDDC will be operating its famous 'free tree scheme' again this winter this is a golden opportunity to plant a tree for the Queens Jubilee and for subsequent generations to enjoy and to help celebrate our Sovereign's long and distinguished reign. Any anti-monarchists amongst us can plant to help save the environment and counteract global warming. Happy planting, Ken Wilcox.

Children's Play Area

Work continues and a number of quotations have been obtained. Some preparatory drainage work is being done on the site and an application for funding grant has been made to EDDC. Applications to other funding sources will follow together with local village fundraising events.

10 YEARS AGO

Issue 140 December 2011

Kilmington Pre-school's Creepy and Crafty Halloween Party held over 50 children spellbound this year. Activities and games included making spooky models of bats and spiders, decorating biscuits with green gunge, tattoos, painting glow in the dark pictures and making our own spells complete with a 1 metre high Caldron.

Village Carol Singing

We will start on Kilmington Common at 6:30 pm on Friday 23rd of December. The procession will also sing at the old post office, Jubilee Green, Meadow Bank, the Green, ending up at one or both of the pubs! Brian Lavender

OBITUARY TO COMMON SENSE

Today we mourn the passing of a beloved old friend, Common Sense, who has been with us for many years. No one knows for sure how old he was, since his birth records were long ago lost in bureaucratic red tape. He will be remembered as having cultivated such valuable lessons as:

- Knowing when to come in out of the rain;
- Why the early bird gets the worm;
- Life isn't always fair;
- And maybe it was my fault.

Common Sense lived by simple, sound financial policies (don't spend more than you can earn) and reliable strategies (adults, not children, are in charge).

His health began to deteriorate rapidly when well-intentioned but overbearing regulations were set in place. Reports of a six-year-old boy charged with sexual harassment for kissing a classmate; teens suspended from school for using mouthwash after lunch; and a teacher fired for reprimanding an unruly student, only worsened his condition.

Common Sense lost ground when parents attacked teachers for doing the job that they themselves had failed to do in disciplining their unruly children. It declined even further when schools were required to get parental consent to administer sun lotion or an aspirin to a student; but could not inform parents when a student became pregnant and wanted to have an abortion.

Common Sense lost the will to live as the churches became businesses and criminals received better treatment than their victims. Common Sense took a beating when you couldn't defend yourself from a burglar in your own home and the burglar could sue you for assault.

Common Sense finally gave up the will to live after a woman failed to realize that a steaming cup of coffee was hot. She spilled a little in her lap and was promptly awarded a huge settlement.

Common Sense was preceded in death,

- by his parents, Truth and Trust,
- by his wife, Discretion,
- by his daughter, Responsibility,
- and by his son, Reason

He is survived by his five stepchildren;

- I Know My Rights
- I Want It Now
- Someone Else Is To Blame
- I'm A Victim
- Pay Me For Doing Nothing

Not many attended his funeral because so few realized he was gone. If you still remember him, pass this on. If not join the majority and do nothing.

This piece was originally printed in the London Times.



Bookings only throughout December, pre orders for menu requested.

2 course £19.95, Childs £12.95
3 course £24.95, Childs £14.95

Starters

- ❖ Winter Vegetable and lentil soup.(V)
- ❖ Breaded Mushrooms, served with Garlic Alioli.
- ❖ Prawn cocktail.

Desserts

- ❖ Christmas pudding, Brandy Sauce.
- ❖ Marbled Choc and Raspberry Pyramid, Served with a Raspberry coolant.
- ❖ Cheese and Biscuits.
- ❖ Selection of Ice Creams available for Kids.
- ❖ Gluten free dessert available on request.

Main Courses

- ❖ Roast Turkey, Served with all the trimmings.
- ❖ Roast Beef, Served with all the trimmings.
- ❖ Pan Fried Salmon, Served with Hollandaise sauce, Roast Potatoes and seasonal Veg.
- ❖ Nut Roast (V) With all the Trimmings.

KILMINGTON GARDENING CLUB

At the end of the Kilmington Gardening Club AGM members were able to socialise over a drink and some nibbles while presentations were made to the outgoing committee members as well as the Club President, Dr B. J Lewis.





Financial advice made personal

We recognise that talking about money and finances is personal – sometimes sensitive. So it's reassuring to know that there's someone on hand who can help you address your needs, understand your goals and realise your dreams.

We offer a friendly and approachable service, backed by the strength and security of FTSE 100 company, St. James's Place Wealth Management; and being local means we're here to help whenever you need us.

Let's start a conversation.

TRACEY PAYNE DpfA
Principal

TJP WEALTH MANAGEMENT
Associate Partner Practice of St. James's Place Wealth Management
Exeter Based | 07817 489047
tracey.payne@sjpp.co.uk

The Partner Practice is an Appointed Representative of and represents only St. James's Place Wealth Management plc (which is authorised and regulated by the Financial Conduct Authority) for the purpose of advising solely on the group's wealth management products and services, more details of which are set out on the group's website www.sjpp.co.uk/products. The St. James's Place Partnership and the St. James's Place Partner Practice are marketing terms used to describe St. James's Place representatives.

SLP11687 V2 (29/20)



MAD moments in the garden

As autumn slowly drifts into winter, so the plants begin to slump, sometimes elegantly, sometimes more dramatically downwards. I like this time of year, things slowly falling asleep, nothing very active in the garden apart from a few determined weeds. Flowers on the *Prunus Autumnalis* along with the bright pink *Nerine bowdenii*. I understand *Nerines* are not always easy to grow so I was delighted to inherit two large patches when I moved here. They like being planted with their necks above ground and grow best in seemingly crowded groups. They were late emerging this year like everything else. The startlingly pink flowers shoot out of the bare bulbs like a burst of fireworks. The bare green stems with heads of fine, lily-like flowers are a good contrast to other autumn, more muted colours. Their strap-like leaves appear in the spring providing good ground cover for the first half of the year, dying back exposing the bulbs to bake in the mid-summer sun.

Those plants aside, it feels to me like a time for rest and relaxation for plants and a bit more for us gardeners too, just a few hours in the garden on sunny days removing determined weeds, sweeping leaves and tidying trees and shrubs. The shorter days give time for reading gardening books, browsing seed catalogues and contemplating the gardening year ahead.

But before we get to that point in the year there are preparations for Christmas. No time for slumping in front of the fire yet, especially for those of us with large families to think about. Determined for a Merry Christmas this year,

I've started thinking and planning already. However, my Christmas article, Poinsettias, Amaryllis, Holly, Ivy, decorations and presents I've written about before. Therefore, concentrating on being merry outdoors, here is a sort of plant-focused treasure-hunt-come-quiz that might provide an all family post-turkey nudge into wellies and fresh air.

M: See how many times you can spot the colour MAGENTA in nature at this time of year.

E: Why are some leaves EVERGREEN and how many different shaped evergreen leaves can you find.

R: Why are some berries RED and how many different plants can you find that have them.

R: *RANUNCULACEAE* is the plant family name for Buttercups. The name comes from the Latin *Rana* meaning little frog because a lot of plants in this family like growing in damp places. Can you find any of the *ranunculaceae* family flowering in your or other gardens now?

Y: How many YEW trees can you find around the village and why were they often planted in churchyards?

There are no prizes I am afraid, answers to the "Why" elements of the questions are available on Google but no cheating!

Enjoy, and I hope you all have a very MERRY CHRISTMAS.

Mary-Anne Driscoll



KILMINGTONG GARDENING CLUB

www.kilmingtonggardeningclub.co.uk

Around 30 very happy members attended the Kilmingtong Gardening Club's AGM on Friday, 12th November. Gill Gibbs, our outgoing Chair, reflected that the last time she presided over a Gardening Club AGM was in 2019 and so much had happened since then (or rather, hadn't happened!) In 2020 Nick Bailey, of BBC Gardeners' World, was one of three speakers we managed to squeeze in before National Lockdown in March. After that our programme was cancelled until further notice and our own gardens were given full attention. Instead of our normal Plant Market, Jane Chalk was able to magically produce plants for collection (thanks to Bev and Dave for the use of your driveway!) Disappointingly, the Flower Show in July was a casualty and any other glimmers of hope were extinguished when the 'rule of six' was introduced ensuring that last year's AGM could not take place.

Whilst 2021 began in a mildly optimistic vein, a further lockdown meant that talks were cancelled again and the Show was postponed. The Plant Market was by order only but, as last year, was very much appreciated by all those who placed orders. Open Gardens were organised by Mary-Anne and her team with 11 gardens open. It was an opportunity for many in the village to get out and about for the first time in months and donations raised went towards the Village Hall funds. Having had to cancel the Show again in July, we were determined to have some kind of event in September. Restrictions meant that it was a very different kind of garden

show with a one-way system in place at the Village Hall and registration taking place on the day. Visitors also had the chance to vote for their favourite exhibits. Outside on the field, a very keen group, led by Lesley, organised the outdoor events – a great success with a lovely, friendly vibe.

With restrictions easing slightly, we were able to host two talks in the last few months, the last with Anne Swithinbank, who was as appreciative as we were to have a question-and-answer session in person.

For next year, we are pleased to say that Lesley is preparing an interesting programme of talks and Christine Mills is prepared to coordinate visits for members once again in 2022. Updated information is to be found on our website which has been re-named:

www.kilmingtonggardeningclub.co.uk but can be accessed via the old address: www.kvpa.co.uk.

Current membership of the Club stands at 140 which is one of the more successful gardening clubs in the area. The success of the Club is due to the voluntary hard work over the past two years by all the committee and Gill thanked them all for their efforts. However, Mary-Anne Driscoll, who has taken over as Chair for one year, stressed that although the Club is successful, it has proved difficult to find people who are willing to join the Committee and she asked members to consider whether they, or anyone they know, would be willing to volunteer.

Jean Falconer

HOSPISCARE – SAVE OUR SERVICES

Hospiscare, the local hospice for Exeter, Mid and East Devon, has launched an urgent fundraising appeal to keep its specialist services open. The charity is calling for support to save its services after losing vital income due to the pandemic, while simultaneously facing unprecedented pressures and challenges. Hospiscare now needs to raise an additional £1 million by March 2022 to stabilise its finances and ensure its ward beds can stay open and its weekend care services can continue.

Hospiscare has seen a significant increase in demand for its services. With a 15% rise in patients last year, the charity is now caring for more people than ever before. Having remained open throughout the pandemic, Hospiscare is still delivering care to some of the most vulnerable people in the local community, but it costs £22,794 every day just to keep its vital services going. The hospice relies upon the support of the community to fund its specialist services, with just 18% coming from the NHS.

Hospiscare's clinical director and deputy CEO, Tina Naldrett, said: "Our doctors and nurses provide specialist end-of-life care to patients and families across 1,028 square miles of Devon's heartland. If the funding shortfall continues, there is a real risk that Hospiscare will have to

close beds on our ward and reduce our vital weekend services in patients' homes. Hospiscare was built by the community, for the community, nearly 40 years ago. The last 18 months have been the most difficult in almost 40 years of caring for local people and the charity's income has not recovered enough to keep pace with the cost of care. We are asking our incredible supporters and everyone reading this to please consider supporting us now. Your support can help us recover from the pandemic and keep our services going, ensuring we are still here to help those in the community who need us for the years to come."

To make a donation today to secure the hospice's vital services, please visit www.hospiscare.co.uk/sos or call 01392 688020.

FESTIVE FUNDRAISING – Hospiscare are reaching out to the local community, hoping people will come up with wonderful ways to fundraise this Christmas. For more information and lots of festive fundraising ideas, please visit www.hospiscare.co.uk/support-our-work/fundraise/festive-fundraising/.

Ali McGeown

AXMINSTER AND LYME CANCER SUPPORT

www.axminsterandlymecancersupport.co.uk

www.facebook.com/axminsterandlymecancersupport.co.uk

Tel: 07512 279663

Email: info@axminsterandlymecancersupport.co.uk

Mailing address: Axminster and Lyme Cancer Support, Heathermoor, Yawl Hill Lane, Yawl, DT7 3RW

The ALCS Newsletter no. 38 contains, as usual, not just news about the help and support provided for cancer sufferers and their families but it also reminds readers about the money raising which has to go on all the time to finance it. They hold open forum meetings four times a year to get feed-back to help them improve their services. This newsletter starts by thanking the Axe Valley runner who raised £250 for the charity in the London Marathon and reminds any intrepid fundraisers about the planned skydiving event next May. There is a look back at October events such as the anniversary trip to Sculptures by the Lakes and the Bokes' Brunch at Ric's Kitchen in Axminster. There are plans for a Pie & Pint Men's event

each month in 2022. There is information about how to donate and get involved with ALCS and about the online shop which sells cards and gifts such as jigsaws and calendars.

Their website contains details of the various therapies available and the recently introduced Bereavement group sessions at Axminster Hospital each month, as well as information about weekly drop-in sessions and about the WhatsApp group on 07512 279663 which many are finding helpful. If you would like to receive the newsletters, online or by post, please contact ALCS to be added to their mailing list.



ANAGRAM ANSWERS



1. Carol Singers

5. Frosty the Snowman

9. Santa Claus

2. Silent Night

6. Christmas Cards

10. Rudolf the Red Nose Reindeer

3. Wrapping Paper

7 Christmas Tree

4. Christmas Eve

8 Saint Nicholas

AXMINSTER PRINTING CO LTD

TEL: 01297 32266

Not just a Printing Company....

Established in 1969



Printing & Design Services

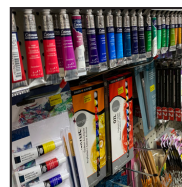
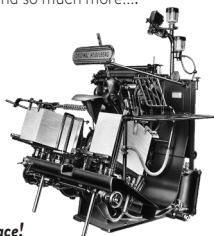
Leaflets, Posters, Booklets, Books, Labels, Tags, Menus, Banners, Magazines, Canvases, Order of Services, Headings, Business Cards, Appointment Cards, Compliment Slips, Headed Cards, Bookmarks, Invoice and Order Forms, Delivery Forms, Folders, Vouchers, Loyalty Cards, Wedding and Business Stationery, Plans, Prints (any Size up to A0) and so much more....



Stationers

- Student Essentials
- Computer Inks & Toners
- Business Machines
- Packaging Supplies
- Filing Products
- Office Stationery

All your stationery needs on one place!



Art & Craft Supplies

- Art supplies for the student or hobbyist
- Card making materials
- Lots of craft products and activity sets for children



Website: www.axminsterprinting.co.uk Email: sales@axminsterprinting.co.uk

Address: Axminster Printing Co. Ltd, West Street, Axminster, Devon EX13 5NU

Vintage Engineering

An engineering company with a difference, We cater for the one offs and bespoke items, in Metal (welding and fabrication) wood, and mechanical objects.

We restore Vintage/Classic cars and motor bikes, M.O.T Welding, repair gates, stairs, individual items, make new objects in steel, stainless and aluminium and manufacture or repair wood and mechanical items.



Do you have those broken or damaged objects that you need repairing or replacing that will not cost the earth, and those home repairs or builds that no one seems interested in, we can give you a cost to do those things you just want sorting.

Call 07917765978 –

Whitchurch Canonorum

vintageengineering.co.uk

Chris Stubbs Electrical

Est 1981

OFFICE ADDRESS: UNIT 2,
THE ASSEMBLY ROOMS,
GUNDRY LANE, BRIDPORT,
DORSET, DT6 3RL

Bridport Office No. 01308 422726

Kilmington Home No. 01297 631244

Mobile No. 07836 247294

email: StubbsChris@hotmail.com

**“For a friendly service
at a competitive price call us today”**



GREEN MACHINES

Mobile Garden Machinery Repair

FORMERLY DAVID GEAR HORTICULTURAL

Oliver Newton

Service & Repair of all Garden Machinery

Call Oliver Today!

01297 23913



Vicary & Co
Chartered Surveyors & Property Agents

Estate Agents & Valuers
Residential - Commercial - Rural

Thinking of selling?
Call us today to arrange a
FREE market appraisal of
your home.

Vicary & Co Estate Agents & Valuers
5 South Street | Axminster | Devon | EX13 5AD
01297 33449 | sales@vicaryandco.com | vicaryandco.com

Sales Manager Kelsey Lawrence
Ian Vicary MRICS FISVA MARLA FAAV Pg Dip (Arch Cons) - Chartered Surveyor &
RICS Reg. Valuer

FUNERAL DIRECTORS & MONUMENTAL MASONS

W. G. POTTER

Julian & Karen Hussey DipFD NAFD

~ a family business ~

Dignified, Professional & Caring

- Offices also at Bridport, Seaton, Honiton & Ottery St. Mary
- Pre-arranged & prepaid funeral plans

*Members of The National Association
of Funeral Directors*

*Recommended by The Good Funeral Guide and
The Natural Death Centre*

West Street, Axminster EX13 5NX

01297 34283

www.funeraldirectors.uk.com



www.hunthay.co.uk

Secure Containerised Self Storage

Suit Business or Domestic use

Caravan + Motorhome Storage

Industrial + Starter units

Easy, long day & weekend access

Owner lives on site

Close to A35

jenny@hunthay.co.uk

Phone: 01297 33839 / 07779 550771

Lending with Heart and Mind

**East Devon District Council fund a not-for-profit
loan scheme for homeowners and landlords*.**

**We understand the expense of maintaining your
home and we work with you to take the stress out
of funding repairs, improvements or adaptations.**

**We see you as an individual, not a credit score.
Our knowledgeable team of advisers will guide
you through the process of applying for a home
improvement loan.**

**For a no-obligation assessment
or more information visit**

www.lendology.org.uk or call 01823 461099

Heatherton Park Studios, Bradford on Tone, Taunton, TA4 1EU

*subject to eligibility

WOOF'S N WAGS PET SERVICES



**DOES YOUR DOG NEED WALKING?
GOING AWAY OR WORKING AND NEED
SOMEONE TO LOOK AFTER YOUR PETS?**

**WE CAN CARE FOR ALL YOUR PETS
DOGS - CATS - RABBITS - CHICKEN &
DUCKS - REPTILES**

- **DOG WALKING**
- **PET SITTING**
- **DAY CARE**
- **OVERNIGHT STAYS**

**PLEASE CALL MANDY 07810648433
woofsandwags21@gmail.com**

REFLEXOLOGY TREATMENTS — HONITON —

*Feeling tired
& in need of
a pick-me-up?*

**RELAXING FOOT MASSAGE
TO RELIEVE STRESS &
REBALANCE**



Appointments available.

CONTACT PAULA
07912 351382

PAULA FENEGAN

★ GIFT VOUCHERS
ON REQUEST



www.paulafenegan.co.uk



NIGEL PHILLIPS GARDENING SERVICES

Does your garden need a good tidy

READY FOR AUTUMN

Phone Nigel Phillips 01297 35302

Also regular grass cutting and up-keep all
year. Friendly local service.

AERIALS & CABLES

AERIAL REPAIRS & INSTALLATIONS

Digital Upgrade

FM • Multi-Points

Free Estimates

0781 4481 833





MNR MOWERS LTD

Unit 8 Devonshire Court
Heathpark Industrial Estate
Honiton, Devon EX14 1SB

ANDY MOULE
SALES SERVICE SPARES
Collection & Delivery in East Devon
For all types of Garden machinery
Tel 01404 548300 Fax 01404 548301
MNRMOWERSLTD@UNIT8.ECLIPSE.CO.UK

MOPS'Y MOPS

CLEANING & DOMESTIC SERVICES
*SMALL JOBS TO
SPRINGCLEANS.*

MATURE FEMALE CLEANER
CALL SADIE
0129734367
MOBILE 07779703388




Order your CHRISTMAS GOOSE

Organic pasture raised in Smallridge
(4 miles from Kilminster)

Oven ready for collection from Smallridge
Just before Christmas

£14/kg and we ask for a reservation deposit
of £15

Email: Lilaccottagelarder@gmail.com
Message us on Facebook @lilaccottagelarder



Based in Kilminster & providing all aspects of **Repair, Refurbishment & Renovation.**

Including (but not limited to!):

- ✓ General Building Repair and Maintenance
- ✓ Bathroom and Kitchen Remodelling
- ✓ Interior and Exterior Decorating
- ✓ Regular Garden Maintenance
- ✓ Landscaping and Minor Construction
- ✓ Flat-pack Construction (no more frustration!)
- ✓ A lot more - just ask!

Call **Simon** on **07939 242 101** or email **simon@bpmaintenance.co.uk**
www.bpmaintenance.co.uk

"A friendly and efficient service, available in East Devon and West Dorset"

§Khushi Kitchen

Fancy a **HOMEMADE** local curry?

Then why not try a §Khushi authentic curry experience.

- ❖ Kilminster's Friday curry takeaway
- ❖ Fresh Frozen Curries available **EVERYDAY** @ The Old Barn (honesty box system)
- ❖ Catering for all occasions, please enquire for a personalised menu

Email: mina@khushi.kitchen

Web: <http://khushi.kitchen>

Addr: The Old Barn, The Street, Kilminster EX13 7RJ



khushi kitchen-axminster devon & dorset

Check the website regularly for §Khushi's future events and pop-up kitchens.

Mina x



musicseeds



This music class in Colyton, is perfect for children aged 1 to 3. Run by a teacher and musician, it is a great grounding in music for the little ones, and also lots of fun!

Singing, games, movement, playing percussion.

9.30 – 10 am, Thursday

Reece Strawbridge Centre, Colyton

See musicseeds.co.uk for more details

Or contact Leah Stonex on 07850 157520

Rob Perry Garden Machinery

Lawn Mowers & Power Equipment

Merry Christmas



Now winter servicing all garden machinery
We can collect and deliver

Raymonds Hill EX13 5ST

t: 01297 631314 e: sales@robperrygardenmachinery.co.uk

www.robperrygardenmachinery.co.uk

Advice

Sales

Service



Are you worried about your Tax Returns?

We provide a friendly, professional service for self assessment returns, business accounts and all aspects of taxation based on experience, qualifications and confidentiality.

HOME VISITS AVAILABLE

For an initial free meeting please telephone our office and ask to speak to Hayley Perham (Taxation Director) or email: crwaccountants@btconnect.com

Telephone 01297 553286

The Personal, Professional approach to Taxation, providing "Peace of Mind"

CRW Accountants Ltd
The Mews, Queen Street, Colyton, Devon
EX24 6JU
www.crwaccountants.co.uk

Stuart's Sweeping Service

Your local chimney sweep



07432 118318 or 01404 831288

Evening and weekend appointments available.

eyecatching

DRESSMAKING AND DESIGN

in Kilmington Village

Discuss your requirement with Rosemary
Tel. 01297 639270

KILMINGTON CROSS SERVICES (PETROL STATION)

Tel. No: 01297 631089

MILK : NEWSPAPERS : HOT SNACKS :
GROCERIES
HOUSEHOLD ITEMS:
COAL: CALOR GAS
PHOTOCOPYING : OFF LICENCE
PAY POINT : E-TOP UP: GAS & ELECTRIC:
JET WASH

OPENING HOURS

Monday-Saturday 6.00 am - 10.00 pm
Sunday 7.00 am - 10.00 pm



Kilmington, Axminster

- Coffee, Latte, Cappuccino, Tea and all type of drinks
- Variety of Cakes
- Breakfast available all day, prices start from £5.95
- Starters and Main Meals
- Desserts and Ice Creams



- Every Sunday Carvery £10.95
12.00pm until 3.00pm



- B&B Rooms available
- Single, Double, Twin & Family Rooms
- All rooms are En-suite
- Rooms available from £49.00



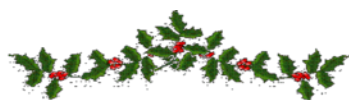
- Function Room – Free of Charge



Call 01297598060

DATES FOR DECEMBER 2021

Sat	4th	10.00 am - 1.00 pm	Village Hall	Royal British Legion Christmas Fair
Sun	5th	11.00 am	St Giles' Church	Holy Communion
Tues	7th	Early	Your House	Garden Waste Collection
	7th	10.30 am	The Beacon	Messy Sparklers
Wed	8th	7.15 pm	Village Hall	Community Cinema: <i>Dream Horse</i>
Thur	9th	2.15 pm	Village Hall	Community Cinema: <i>Dream Horse</i>
Sat	11th	10.00 am	St Giles' Churchyard	FROGS Working Party
	11th	3.00 pm	St Giles' Church	Celebrate Together
Sun	12th	9.30 am	Dalwood Church	Mission Community Holy Communion
Tues	14th	12.30 pm	The Beacon	Community Contact Christmas Lunch
Wed	15th	7.00 pm	Minster Church, Axminster	Axe Valley Christians against poverty information evening
Fri	17th	6.00 pm	Around Village	Father Christmas is Coming (<i>see page 6 for more informaion</i>)
Sat	18th	8.00 am	The Beacon	Men's Breakfast
	18th	3.00 pm	St Giles' Church	Christingle
Sun	19th	10.30 am	The Beacon	Nativity: <i>Flight 101</i>
	19th	11.00 am	St Giles' Church	Holy Communion
	19th	6.00 pm	St Giles' Church	Carol Service
Mon	20th	Early	Your House	Landfill with recycling
Wed	22nd	6.30 pm	The Beacon	Family Carol Service followed by Festive Refreshment
Fri	24th	9.30 pm	St Giles' Church	Midnight Mass
Sat	25th	10.00 am	The Beacon	Christmas Day Family Service
Sun	26th		The Beacon	No Services



SUDOKU SOLUTIONS



1

6	3	5	1	2	4
4	2	1	3	6	5
5	4	6	2	3	1
2	1	3	5	4	6
1	6	2	4	5	3
3	5	4	6	1	2

2

4	5	3	2	1	6
2	6	1	5	4	3
5	3	6	4	2	1
1	4	2	6	3	5
6	1	4	3	5	2
3	2	5	1	6	4

3

5	6	9	1	4	3	7	2	8
7	3	1	8	9	2	5	4	6
4	8	2	6	5	7	1	9	3
3	7	5	4	2	9	6	8	1
2	4	8	7	1	6	3	5	9
1	9	6	3	8	5	4	7	2
6	2	7	5	3	8	9	1	4
8	1	3	9	7	4	2	6	5
9	5	4	2	6	1	8	3	7

5

9	3	11	5	4	1	10	2	12	8	6	7
7	6	12	2	11	9	3	8	10	1	4	5
1	10	8	4	5	7	6	12	11	2	3	9
10	1	5	6	7	3	8	11	4	9	12	2
11	12	7	3	1	2	9	4	6	5	10	8
4	2	9	8	10	6	12	5	1	7	11	3
3	9	1	7	2	10	11	6	5	12	8	4
5	4	6	10	8	12	1	7	2	3	9	11
12	8	2	11	9	5	4	3	7	10	1	6
2	11	10	1	3	5	4	9	8	6	7	12
6	7	4	9	12	8	2	1	3	11	5	10
8	5	3	12	6	11	7	10	9	4	2	1

4

7	8	6	3	1	4	5	9	2
2	9	3	8	5	7	4	1	6
1	4	5	6	9	2	8	7	3
8	1	7	9	4	3	6	2	5
9	6	4	7	2	5	3	8	1
3	5	2	1	6	8	7	4	9
5	2	1	4	7	6	9	3	8
4	3	9	5	8	1	2	6	7
6	7	8	2	3	9	1	5	4

WEEK TO VIEW (Events that happen the same time every week)

Sunday	10.30 am	The Beacon	Service
Monday	early	Your house	Recycling collections
	2.00 - 4.00 pm	Village Hall	Country Dancing
Tuesday	10.00 - noon	The Beacon	The Post Office
Wednesday	9.15 am	The Beacon	Toddlers and Tinies (Term time only)
	10.00 - noon	St Giles' Church	Mums and Babies Support Group
Thursday	6.00 - 8.30 pm	The Beacon	Fusion (Term time only)
Friday	10.00 - noon	St Giles' Church	Coffee and a warm welcome

DATES FOR JANUARY 2022

Sun	2nd	11.00 am	Dalwood Church	Mission Community Holy Communion
Tues	4th	10.30 am	The Beacon	Messy Sparklers
Thurs	6th	Early	Your House	Recycling and food waste only
Sun	9th	11.00 am	St Giles' Church	Service of the Word with Gill Heighway
Mon	10th	Early	Your House	Landfill with recycling
	10th	7.30 pm	Village Hall	Parish Council Meeting (<i>all welcome</i>)
Tues	11th	9.30 am	St Giles' Church	Said Communion
Wed	12th	Early	Your House	Recycling and food waste only
Thurs	13th	7.00 pm	The Beacon	Alpha Course (<i>running for the next 12 weeks</i>)
Sun	16th	9.30 am	St Giles' Church	Holy Communion
Tues	18th	Early	Your House	Recycling and food waste only
	18th	12.30 pm	The Beacon	Community Contact Lunch
Sun	23rd	9.30 am	St Giles' Church	Service of the Word with Gill Heighway
Tues	25th	Early	Your House	Garden Waste Collection
	25th	9.30 am	St Giles' Church	Said Communion
Sun	30th	11.00 am	St Giles' Church	Mission Community Holy Communion
Mon	31st	Early	Your House	Landfill with recycling



DONATIONS, PAYMENT FOR ADVERTISING SPACE AND ARTICLES/NOTICES FOR POSTSCRIPT (i.e. THOSE NOT SENT BY EMAIL)

It has been necessary to set up alternative arrangements following the closure of the village shop.

DIRECTIONS FOR FINDING Vicky Larcombe's house. Vicky is treasurer for Postscript.

From Whitford Road turn left and walk up The Street, passing Koppers, Kushi Kitchen, the Bull Pen and West Gate on your right. The next house is **Brookside** where Mrs Vicky Larcombe lives. If you find yourself crossing Meadow Bank, you have gone a few steps too far.

Please post payments for advertising in Postscript and donations to help with printing costs
through the front door of Vicky Larcombe's house. Thank you.

USEFUL TELEPHONE NUMBERS

VILLAGE NUMBERS

Bell-ringing - Celia Dunsford	01297 33563	Kilminster's Little Helpers - Sally Huscroft	01297 32243	Sunday School	
Country Dancing - Gill Perkins - Marie Thorne	01297 32888 01297 33906	Kilminster Pre-School - Now part of primary school	01297 32762	Table Tennis - Jenny Nickolls	01297 639758
Cricket - David Lavender	01297 631868	Kilminster Primary School	01297 32762	Telephone Box Library - Karen Hodder	01297 35162
Footpath co-ordinator - Elaine Penzer	01297 34287	Millers Farm Shop	01297 35290	Tennis - Sue Moore Sue Wells	01297 32361 07912 272102
Hitchcock Pavilion bookings - Peter Huscroft	01297 32243	The New Inn	01297 33376	Village Hall bookings - Louise Quincey	01297 32358
Kilminster A35 Pit Stop	01297 598060	The Old Inn	01297 441855	Village 100+ Club - Jean Falconer	01297 33708
Kilminster Cross Services	01297 631089	RBL - Jean Falconer - Sec Stafford Seward - Chairman	01297 33708 01297 33909	www.kilminstervillage.com - Luke & Maxine Lawson	07719 909532
KGC - Jean Falconer, Secretary	01297 33708				
Kilminster Community Cinema - John Watts	01297 639758				

MEDICAL AND SUPPORT

Axminster Hospital	01297 630400	'Devon Doctors on call' (Out of hours GP service)	0845 6710270	Veterinary Surgery	01297 630500
St Thomas Court Surgery	01297 32126	Dentist Helpline	03330 063300		

SERVICES AND FACILITIES

Refuse Collection	01395 571515	Axminster Library	01297 32693	Clerk to the Parish Council	07800 826657
Water - general - leaks	0344 346 2020 0800 230 0561	Mobile Library	01404 42818	E. Devon District Councillor - Iain Chubb	01297 35468
Electricity - emergency	0800 365 900	Ring & Ride	01404 46520	Devon County Council, Whimble and Blackdown, Iain Chubb	07932 459595
		Axminster Care Service	01297 35550		

Police: Crime stoppers - 0800 555111; Emergency - 999; General - 101

CHURCHES

St Giles' Church Rev Julie Lomas	01297 35004	Baptist Church Office Pastor Mike Hudson	01297 631638	Axminster Catholic Church Parish Priest: Father Anthony Cockram	01297 32135
--	-------------	--	--------------	--	-------------

ADVERTISING IN POSTSCRIPT

Postscript is published ten times each year and is delivered free of charge to every house in Kilminster. All advertising fees and donations to Postscript are used to meet the cost of printing. ALL advertisements which are set out, from any source, are chargeable as follows and must be paid for in advance.

	Black and white ads	Colour ads
Credit card (70 mm x 40 mm)	£ 5 or £22.50 for 5 months	
¼ page (90 wide x 136 mm high - Portrait)	£12 for one-off or £50 for 5 months	£15 for one-off or £75 for 5 months
½ page (184 x 136 or 90 x 276 mm)	£20 or £90 for 5 months	£30 for one-off
Full page (184 x 276 mm)	£30 or £130 for 5 months	£40 for one-off

If the advertisement could be sent as a jpeg it is a great help when sizing for publication.

BACK COVER: *Occasionally the back cover is available for a one-off colour page advertisement. Cost: £50*

Additional fee of £1 if Postscript has to edit, size or set copy.

PAYMENT: Cheques should be made payable to: Kilminster Postscript and posted to: **Mrs V. Larcombe, Brookside, The Street, Kilminster, EX13 7RJ.** BACS account name is **Kilminster Postscript**, sort code: **51.61.23**, account no: **18159400**

COMING AND GOING FOR A SONG: There is no charge for these entries for items valued up to £20 or less. However, donations are appreciated - these can be popped through Vicky Larcombe's door (please see directions on page 22).



Kilmington Royal British Legion



Christmas



Fair

**Christmas Wreaths, Cards & Gifts,
Cakes & Raffle**

Saturday 4th December

Kilmington Village Hall

10.00am to 1.00pm

Entrance & Tea/Coffee & Mince Pie £1.50

Also available

Festive Hot food & Drink for all to enjoy

