

KILMINGTON

# POSTscript

Issue 251 February 2023

---





## EDITORIAL

Somewhere in a dark cloud of garbled data accessed by wannabe blackmailers Kilmingdon Postscript has been erroneously classified as a single individual who, allegedly, watches unsavoury videos. There are threats that proof of this shameful activity, obtained Big-Brother fashion through the camera on the victim's computer, will inevitably have to be supplied to all contacts, unless payment is sent in Bitcoin. Such claims come usually in English, sometimes in French and once in Dutch. All are easy to spot and immediately deleted, but if the senders did not think it might be worth their while, they wouldn't keep trying, would they?

Other inbox content for this month's Postscript was much more welcome. We have a piece about the Kilmingdon School Christmas concert, written by Max and Freya. Work parties are arranged for the ongoing restoration of the Common and The RBL lists the events for the year starting with the Spring Coffee Morning. Alan Clarkson looks back in the archives at the contention arising from the 1902 Education Act which divided the village and disrupted the harmonious relationship between the two churches for a time. Our thanks to David Wilsdon for providing the February moth update. No doubt most other country villages have moths, but we also have our own expert who knows about them and tells us what to look for.

The hospitality offered by the churches in providing warm spaces this winter is extended into February. Events in the Village Hall include the KCC film, 'Fisherman's Friends One and All' – nothing to do with sore throats or fish – which, as usual, has a matinee as well as an evening performance. The Big Breakfast is back this year, in aid of Cancer Research. After providing entertainment for the adults for several years, and in response to popular demand because they do it all so well, the Kilmingdon Players will present their pantomime, 'Jack and the Beanstalk'. Younger ones will be delighted – some of them are in it.

We welcome Jane and Peter who have nobly stepped in to provide a regular gardening article, which will include veg and fruit and may encourage even more people to have a go at growing their own. There is also news of some rearrangement of competitive events at the Garden Show in July and the Village Show in September this year – see Lesley Rew's Gardening Club article to find out which exhibits you might need to prepare in time for each show. Kilmingdon again has its two inns and we have received reports from visitors to both. We welcome the new landlords.

Janfryd

Front and middle pages – Marie Gardner

## CONTRIBUTIONS TO POSTSCRIPT

Please remember to use the email address for Postscript:

**postscript@kilmingdonvillage.com**

*Alternatively, please give your item to any team member.*

***The closing date for submitting items for the March issue is 15<sup>th</sup> February 2023. All will be acknowledged. Please email or ring 01297 639115 if not acknowledged within 48 hours.***

## POSTSCRIPT TEAM

### Editor

Janfryd Gordon-Kerr 01297 639115  
janfryd@gordon-kerr.org.uk

### Team

Peter Ball 01297 32631  
mycraigydun@aol.com

Valerie Harding 01297 34206  
vharding38@gmail.com

Jill Collier 01297 32390  
summerleaze@hotmail.co.uk

Gill Heighway 01297 33951  
gillheighway@gmail.com

Marie Gardner  
m.gardner6819@gmail.com

Gill Perkins 01297 32888  
gillperkins23@icloud.com

### Distribution

Diane Overton 01297 33569  
diane.overton@outlook.com

### Treasurer

Vicky Larcombe 01297 33858  
vlarcombe30@aol.com

### Postal address

The Granary, George Lane, Kilmingdon, EX13 7RT

Printed by Axminster Printing  
01297 32266

**Postscript** is published 10 times each year and is delivered free of charge to every house in Kilmingdon. Almost all items in the magazine come from the village community who are very supportive of the magazine.

The Postscript team are all volunteers and your donations, together with fees from advertisers, are used to pay for the cost of printing.

## DONATIONS

***Arrangements for donating to Postscript. Please see page 27 for details. Donations to the middle of February came to £26.00. All donations go towards printing costs. Thank you for your continuing support.***

## ADVERTISING RATES

Please see inside back cover for details.

The average cost per 28-page copy of Postscript with several colour pages is 75p.  
Extra copies are available from Millers Farm Shop, where donations may be made.

**Disclaimers:** Items in this publication are the work of individuals and do not necessarily reflect the thoughts or opinions of the editorial team. The editorial team reserves the right to make small alterations to items submitted. Contributors are responsible for ensuring that parental permission has been obtained before pictures of children are submitted for publication.

The content of advertisements is not the responsibility of the editorial team. Queries should be addressed to the advertiser. This publication is online at [www.kilmingdonvillage.com](http://www.kilmingdonvillage.com). In addition, earlier issues will also appear online from time to time.

# KILMINGTON PARISH COUNCIL

## UPDATE ON 20MPH SPEED LIMIT THROUGH KILMINGTON RESIDENTIAL CENTRE

Devon County Council (DCC) has announced that an additional £150,000 has been secured for a further tranche of new 20mph limits in 2023/24. However, this will cover only another six such schemes. The bad news is that over 105 'expressions of interest' to introduce 20mph limits have already been received from Devon communities.

In order to decide on their priority, DCC use a scoring matrix taking into account average speeds at key locations, the number of vulnerable road users in the area, the speed-related collision history, the level of community support, the presence of an active 'community speed watch' group and the community's deprivation index ranking. Kilmington Parish Council has already submitted a completed questionnaire and listed the factors we believe impact on the

safety of village residents. DCC will evaluate communities and announce in May those that will be funded in this next tranche.

In the meantime, in order to keep things moving, in a recent video conference, KPC have agreed with DCC to fund the small costs of the initial site inspection and detailed design for a 20mph scheme to replace the current 30mph area. This first step will then provide us and DCC with the feasibility of, and detailed costs for, the introduction of a new 20mph limit. This information will then help us both to decide how best to push the plan forward. We will keep you informed of progress.

Kilmington Parish Council

---

## VACANCY FOR A COMPILER AT POSTSCRIPT

If you have some experience with computers, perhaps from a previous occupation, and would be willing to help us get Postscript ready for the printers, we would be delighted to welcome you. The team of nine comprises: editor, treasurer, distribution manager, photographer, several writers and, at the moment, a compiler, Val Harding, who before retiring is willing to ease the transition by helping a new volunteer to take over.

### What is involved?

There is one meeting of the whole team per month lasting an hour or so, usually in the first week. Compilation involves transferring the contributions from the webmail (Freeola) to pages so that it is readable and looks attractive. Most of the compilation work can be done from home during the week around the 15<sup>th</sup> (closing day for contributions) and there is a small group scrutiny and revising session on about 19<sup>th</sup> or 20<sup>th</sup>, also lasting about an hour, before the compiler emails it

to two external proof readers and then to the printers. That's it.

### How?

Apart from the meetings, communication between us is usually by email (or telephone). The present compiler has been using 'page plus' a publishing programme which is now rather old so if you have one with which you are already familiar, that shouldn't be a problem.

### What now?

Contact the editor, compiler or any member of the team (details on page 2) without obligation and begin to find out whether it is something you would like to do. You would be encouraged to join Val and see for yourself so that you can make an informed decision.

We are hoping to find someone who would enjoy being part of this enterprise.

Editor

## THE OLD INN IS BACK!

I was recently delighted to meet Babs and Joe who have taken over at the Old Inn. Reverend Julie had suggested that I should go and meet them and ask some questions so that I could let everyone know some of their plans. They told me that the skittle alley was back; and that they would eventually be having some pensioner meals. The premises would also be dog friendly.

They would like to make it a warm and welcoming space for whoever would like to frequent the premises; not just for a pint and a chat but for



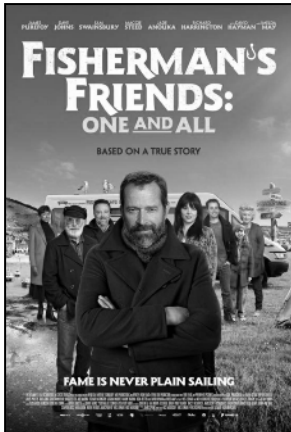
a meal also (if you are feeling hungry). Babs and Joe would like to make it a place to accommodate all kinds of needs.

They were a very nice couple and I enjoyed speaking with them very much. They are partially open now with food being available soon – it may be available now, by the time this piece is published. I very much look forward to sampling their menu in the coming months.

Elana-May Blackmore

# WHAT'S ON IN FEBRUARY

## KILMINGTON COMMUNITY CINEMA



### Fisherman's Friends One and All (PG)

Kilminster Village Hall

Wednesday, 8<sup>th</sup> February &  
Thursday, 9<sup>th</sup> Matinee



The sequel to the 2019 hit UK comedy charts the next instalment of the Fisherman's Friends uplifting true-story. Following the unexpected success of the band's debut album 'No Hoppers, Jokers and Rogues' we re-join them almost a year later, struggling with the pressures, pitfalls and temptations of their new-found fame. FISHERMAN'S FRIENDS ONE AND ALL continues the journey with the loveable 'buoy band', as they navigate the choppy waters of fame, second album syndrome, and performing on the pyramid stage at Glastonbury.

After achieving major-label success, shanty-singing group Fisherman's Friends should be riding high. But leader Jim (James Purefoy) is sinking into drink and depression after the death of his father, the label is unconvinced by their second album, and new arrival in town Aubrey (Imelda May) is a sign of changing times. Can the band clean up and make it to the Pyramid Stage at Glastonbury?

Come along and have another enjoyable evening or afternoon watching and listening to an entertaining film.

Wednesday: Doors open 6.45 pm with the evening's entertainment starting at 7.15 pm and ending about 9.30 pm.

The Thursday matinee: Doors open 1.45 pm Film starts 2.00 pm, come along and enjoy a film and have ice creams/tea/coffee, during the interval. No cream tea this month, but complimentary mince pies will be available.

Please state Wednesday or Thursday when booking. Tickets Pre-booked £5 or £5.50 on door. To book contact John 01297 639758 or email: [wattsjohn307@gmail.com](mailto:wattsjohn307@gmail.com).

In March we have 'Mrs Harris Goes to Paris' and April 'Living' with Bill Nighy - TBC

See <http://www.kilminstervillage.com/moviola.html> for more information.

## FIVE ALIVE OIL SYNDICATE

The February deadline for ordering oil is 6.00 pm on Tuesday 21<sup>st</sup>.

I invite requests for either a specific quantity or if requesting a 'top up' or a full tank, then please furnish me with a pretty accurate estimate as to the quantity that you require with a minimum order of 500 litres.

The March deadline date falls on Tuesday the 21<sup>st</sup>.

Colin Stewart  
01297 792538  
[cogstewartcs@gmail.com](mailto:cogstewartcs@gmail.com)  
[cogstewart@aol.com](mailto:cogstewart@aol.com)

## KILMINGTON GARDENING CLUB

February's talk is by one of the club's favourite speakers, Kathy Crouch, and entitled 'Grow the food you can't buy'.

After winning BBC Gardener of the Year and then Gardener of the Decade, Kathy went on to set up her own garden design company, winning a gold medal at the Chelsea Flower Show and in her spare time she talks to gardening clubs!

This entertaining talk is on Friday, 10<sup>th</sup> February at 7.30 pm in the Village Hall. All welcome, non-members £3

Lesley Rew

## PARISH COUNCIL MEETINGS

February's meeting is on Monday, 13<sup>th</sup> in the Pavilion at 7.30 pm.

## MOBILE LIBRARY

Tuesday, 7<sup>th</sup> March 2023 at 11.20 - 11.50 am The Street

# WHAT'S ON IN FEBRUARY

## KILMINGTON SKY AT NIGHT

Throughout February the red planet Mars can easily be seen in our night sky. Also, Venus and Jupiter are visible quite easily early evening low in the west.

**Comet C/2022 E3 (ZTF).** This comet could be the most exciting spectacle in this year's night sky. But it may not! Comets are notoriously unpredictable so if you're interested to see it, I suggest you check news feeds and the internet to get the latest predictions. It will pass closest to earth on Wednesday, February 1<sup>st</sup> and it will travel quickly across our sky during the following days. If visible on the 1<sup>st</sup>, it will climb progressively higher during the early evening hours in the north-northeast sky, passing close to Polaris, the North Star. Experts also suggest the best time to see it will be close to the north-eastern horizon in the early hours of the

morning before dawn. If it is spectacular we're sure to hear about it!

**5<sup>th</sup> Full Micromoon.** The Moon's orbit is elliptical and its farthest point from Earth is known as apogee. When a Full Moon or a New Moon occurs around apogee, it's called a Micromoon or Minimoon as the Moon appears smaller, the opposite to a Supermoon.

**15<sup>th</sup> Neptune and Venus** appear close, low in the early evening sky. Neptune is faint and you'll need binoculars.

**22<sup>nd</sup> Venus, Jupiter and the Moon** appear close together in the west at sunset.

**28<sup>th</sup> Mars and the Moon** appear close together.

Peter



## HISTORIC PICTURE TOUR OF KILMINGTON 3<sup>rd</sup> FEBRUARY

Learn more about the history and development of Kilminster - come along to an Historic Picture Tour of Kilminster on Friday, 3<sup>rd</sup> February at 7:30 pm in the Village Hall. The Kilminster History Group has collated some historic photographs and added some commentary to give you an historic tour through the village. If you're new to Kilminster then you're sure to learn some interesting

background about your new surroundings. For those who have lived here a while, we'll bring back memories and we hope you'll chip in and pass on some of your knowledge.

We'll have teas, coffee and a bar. Tickets are limited and are just £3, please order yours by calling Peter Squire on 07957 487796.

## KILMINGTON COMMON

We have started the New Year with two work parties, both supported by a doughty group of volunteers.

For now, the tasks of removing bramble roots and oak tree saplings from the grassland continues. The oak saplings we have removed, although not showing much growth above ground, have been a challenge to dig out because they have been repeatedly cut, in effect pruned, by previous grass cutting of the area.

It is important to keep the central part of the common open to allow the heather, heath lobelia and other heath grassland species to thrive. The two trees that have been felled will remove the unwanted shade from this area.

We have had conversations with several villagers who remember various plants that they've seen at different times on The Common, as well as memories of stone piles, village bonfires and rubbish pits.

Any memories, stories and sightings you have do please let us know.

As the year progresses it will be good to monitor the area

and note any plants that emerge, birds and other creatures that are seen. If anyone regularly walks through or around the common, please do let us know what you see.

There are three benches in different areas on the common and the access to these will be maintained to allow everyone who wants to sit and enjoy this lovely place to do so.

We will continue to work with support and encouragement from both Kilminster Parish Council and East Devon AONB and thank them for their advice and encouragement.

### Work Parties

Wednesday, 8<sup>th</sup> February 10.00 am - 12.00 noon

Wednesday, 22<sup>nd</sup> February 10.00 am - 12.00 noon

Please bring strong gloves, mattock, pickaxe, garden fork if you have them.

Looking forward to seeing you then if you can.

Judith Simpson  
simpsonjudith71@gmail.com  
01297 32694



## CHRISTMAS WITH CELEBRATE TOGETHER

On a cold and very frosty afternoon at St Giles' Church on Saturday, 10<sup>th</sup> December; we gathered in our lovely warm church and held our amazing Celebrate Together Service. The theme this time was "The Shepherds". The Church was decorated with socks and snowflakes hanging between the pillars. Socks I hear you ask – yes - they were part of the drama.

A huge thank you to Anna for leading the service for us. We all took part in the drama which was found by my wonderful Mummy; you know my Mum as Christine Thorne. The adults with additional needs also took part; some of them played shepherds, one played Mary and another played Joseph. Prior to the Service, when we called and asked if volunteers could be found to play Mary and Joseph, the staff and residents sounded so excited! We were too! It turned out to be wonderful.

We were very blessed to have not one but two sets of special guests with us. We had Kilmingdon's very own Handbell Ringers! A big well done from us; they played the well-known Carol 'Silent Night' for us. They rang it first and then when



they rang it for a second time we joined in with the words. It was great to hear the handbells in St Giles'. Thank you to Celia Dunsford and to Rob Stacey for being so keen to play for us, not forgetting the rest of the team. We also had a surprise visit by Archdeacon Andrew. He came to sit amongst us with his wife and daughter; it was a great pleasure to have him take part in our sharing of the prayers! We are blessed that he can see what goes on in our wonderful Church.

I led the talk and spoke about the shepherds being like some of us, how they were considered outcasts and that they were even shut out from society. Despite this they were the ones that the Angel Gabriel went to, and they were the ones to tell the very good news of Jesus' birth. After my talk I was very excited to do something a little different - a QUIZ, everyone loves a good quiz. I tested everyone on their knowledge of the nativity, they all did so very well. I really enjoyed preparing my talk and the quiz. During the service we

celebrated three different people's birthdays, so, we had cake as was requested! Who doesn't like cake?

Lastly, we wanted to thank the helpers. Their tireless work behind the scenes and on the day of each service does not go unnoticed. We would be unable to continue without their help. As a thank you we handed out ornaments to this group of ladies. This was to Barbara, Sheila, Pearl and Val (and to Sally) for providing and serving the teas. These form a very big part of our services. We also thanked Anna, Gill, Christine, Greta and Jenny. We did not forget Margaret, who provides us with her wonderful music skills, we would be lost without her. We think that you are all amazing and we love how you do what you do out of the kindness of your hearts.

We had some props provided by Rev Julie, and by Steve, let's not forget him! He is important too! Julie helped me make sense of my talk, for this I am so very grateful. Last, but certainly not least, I would like to thank Rosemary who helped make our lovely, large, hessian sack which held



several of our props for the drama.

It's been an absolute blessing to put on these services, it has really given me the chance to gain confidence and to put into practice what I have been taught. I am so blessed that the team

and I can carry on the legacy that was left by our dear departed friend Diana Mellows! I know that she would have been smiling down on us that day.

Our next service will be held on Saturday, 11<sup>th</sup> February. The theme is 'The Lost Coin'. For more details please contact Christine Thorne on 07814041059.

Elana-May Blackmore

## WARM AND WELCOMING SPACES FOR FEBRUARY

The two churches in Kilmingdon made plans to provide warm spaces this winter and announced in the December/January Postscript that they were offering somewhere warm, free and convivial to spend some time, especially if the weather did its worst. The Beacon also offered a quiet space with Wi-fi and printing. Though often glum and wet, the winter so far has mostly been milder than usual, but that could still change, so we checked whether the arrangements were intended to continue through February.

The BEACON will continue its provision of a warm welcome space throughout February on TUESDAYS only,

from 10.00 am - 12.00 noon. It will be just as before with the community lunch on the third Tuesday (February 21<sup>st</sup>). The Post Office will also be open at the Beacon on Tuesdays (strikes permitting. The postmaster says he always puts the information on Facebook).

ST GILES' CHURCH will offer the same arrangements as before, with 'Warm Welcome WEDNESDAYS' from 2.00-4.00 pm during February and Coffee Shop on FRIDAYS from 10.00 am - 12.00 noon.

Editor

Rev Julie Lomas  
St Giles' Church  
Kilminster  
01297 35004  
07488 278 483  
revjulielomas@gmail.com



## Letter from the Churches

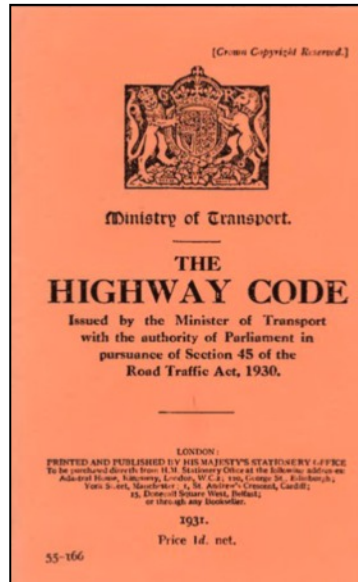
Pastor Mike Hudson  
KBC Church Office  
Kilminster  
07957 738 211  
pastor@baptistchurchkilminster.org

Here is a little known but possibly interesting fact: one hundred years ago the first version of what has become The Highway Code was published, according to Wikipedia, and I quote:

"In 1923 a booklet costing one penny was published by His Majesty's Stationery Office and approved by the Home Office (and Scottish Office). Entitled *Traffic Signals to be used by the Police and Drivers of Vehicles*, this booklet arose from discussions between the Police and The Automobile Association. In subsequent years, in addition to being promoted by the automobile associations, the code was publicised using posters by the National Safety First Association (which still continues this work, having been renamed the Royal Society for the Prevention of Accidents in 1936). The formal introduction of *The Highway Code* was one of the provisions of the wide-reaching Road Traffic Act 1930. Costing one penny, the first edition of the code was published on 14<sup>th</sup> April 1931. It contained twenty-one pages of advice, including the arm signals to be given by drivers and police officers controlling traffic. The second edition, considerably expanded, appeared in 1934, and now illustrated road signs for the first time."

([https://en.wikipedia.org/wiki/The\\_Highway\\_Code](https://en.wikipedia.org/wiki/The_Highway_Code))

Since then, the Highway Code is now in its 17<sup>th</sup> edition and is available in print as well as online (<https://www.gov.uk/guidance/the-highway-code>). I mention this because many of us remember studying the code at the time when we took our driving tests, and having to answer questions and be up to speed with the rules and regulations of the day. So much has changed since I passed my test in 1981 that I have set myself the challenge of reading the 2022



edition this year, conscious that the opening lines are now these: "*The Highway Code is essential reading for all road users, including pedestrians, mobility scooter users, cyclists, horse riders, drivers and motorcyclists.*"

All this got me thinking about other codes, rules and regulations that we have come across in our time, and how often we update ourselves and are reminded of what they mean to us on our daily lives. For me, I was introduced to the codes, rules, regulations and stories of the Bible as a child, and have found that I need to remind myself of these matters as well. This is one of the reasons I read the Bible on a regular basis, and this year, the Church of England is particularly focusing on the Gospel according to St Matthew. There are twenty-eight chapters to

this gospel and it will take me a lot less time to read than the Highway Code (which has three hundred and seven rules, six further sections and a further eight annexes!). The thing is that neither is any good gathering dust on the shelf. Both are intended to give us the wherewithal to live as responsible citizens, to look out for ourselves and our fellow travellers, and to arrive safely at our destination at the end of our journeys through life.

In the same way as the Highway Code is essential reading for all road users, please be encouraged this year to take up a Bible, turn to Matthew's Gospel (it's the first book of the New Testament) and discover essential reading for life in all its fulness.

Happy reading!

Praying for our village as ever.

Rev Julie

## KILMINGTON PRIMARY SCHOOL CAROL CONCERT

The 2022 Kilminster Primary School Carol Concert was amazing.

Jackdaws sang 'It was on a starry night' and it was loud and clear. Ospreys' song was called 'We're the guys with the camels' and it was fluent and jazzy.

Kingfishers sang 'There were shepherds', it was funny and exciting.

Pipits sang 'Wake up', it was adorable to watch. We think it was a huge success and we'd like to thank the amazing audience for taking part in some of the congregational carols.

Max Watson and Freya Norgate  
(Head Boy and Head Girl of Kilminster Primary School)

# CHRISTMAS AT ST GILES CHURCH

## CHRISTINGLE SERVICE

Just before Christmas we held our Christingle service in St Giles' led by Gill and myself. Thank you to Millers Farm Shop for kindly donating the oranges and for Ann Marsh and her team for preparing the Christingles for us.



During the service everyone makes a Christingle and the candles are lit to create a warm glow symbolising the light of Christ and bringing hope to people living in darkness.

Each element of a Christingle has a special meaning and helps tell the Christian story.

The orange represents the world. The red ribbon symbolises the love and blood of Christ. The sweets and dried fruit represent all of God's creations. The lit candle represents Jesus's light in the world, bringing hope to people living in darkness.

Christingle celebrations have been taking place for over fifty years. The Children's Society's first service took place in Lincoln Cathedral in 1968 but Christingle goes back to the

Moravian church in Germany. At a children's service in Marienborn in 1747, Bishop Johannes de Watteville looked for a simple way to explain the happiness that had come to people through Jesus and created a symbol - the Christingle - to do this.



Thank you to all who came and supported this service which was a special time as we prepared to celebrate the Christmas story.

Anna Crabbe

## CAROL SERVICE

A wonderful Carol Service was held at St Giles' at 6.00 pm on Sunday, 18<sup>th</sup> December. The Church was basically full with ninety-seven people in attendance. Many a Carol was sung.

This yearly service is not to be missed and helps make the lead up to Christmas so very enjoyable and festive. Mulled wine and mince pies were available afterwards and our newly formed Hand Bell Ringing Team rung out seasonal music.

What a delight for all to hear, see and taste.

Christopher Thorne



---

## A WARM WELCOME FOR EVERYONE THIS WINTER AT ST GILES CHURCH

Please come and see us and spend time with us every Wednesday between 2.00 pm and 4.00 pm. We will be here until the end of February.

You will find a warm welcome, hot drinks, cake and a friendly chat, all for free. There will be newspapers and crafts, or you can bring your own book or just yourselves. All are welcome so do bring family, friends and neighbours.

This is offered alongside the usual weekly Friday Coffee Shop from 10.00 am to 12.00 noon.

We look forward to welcoming you at St Giles!

Glenis Squire



## CELEBRATE TOGETHER FEBRUARY SERVICE THE THEME IS 'THE LOST COIN'

We would like to invite you all to a special service on Saturday, February 11<sup>th</sup> where the theme will be 'The Lost Coin'.

This is one of our regular Celebrate Together Services where all are invited, with special emphasis on those with learning difficulties, their support workers, their families and friends and those who are on their own. We will have our renowned tea after the service.

Please come and Celebrate with us.

Elana-May Blackmore

## VALENTINE'S DAY

Women should keep a special lookout for birds in flight on Valentine's Day. If a woman sees a robin, it means she will marry a sailor. If she sees a sparrow, she'll marry someone poor who will make her happy. Best of all is if she sees a goldfinch, because then she will marry a rich man.

Gill Perkins

Celebrate Together  
St Giles Church  
Kilminster  
EX13 7RF



The Theme: "The Lost Coin"

Saturday 11<sup>th</sup> February 2023

At 3:00pm

Invites you to a special service for all,  
especially for people with learning difficulties,  
their support workers, family and friends.

Tea afterwards.

Please note that there is ample parking and level access,

For further information please ring

Christine Thorne 07814041059

## WINTER SNOW



When you wake and the world is a wonder in white  
And your eyes adjust from the dark of the night,  
The silent blanket of snow soft and deep  
Makes you mourn for the wasted hours of your sleep.

You're beckoned by nature and answer the call  
As you fetch your coat and scarf from the hall,  
The nip in the air makes your cheeks rosy red  
And it's great to no longer be tucked up in bed.



The trees are weighed down with their boughs full of snow  
Then it piles in drifts when the wind starts to blow,  
The snowflakes like miniature doilies in ice  
Form a carpet of beauty too rich for a price.

The children are quick to bring out the sledge  
Then they fly down the lane past the vicarage hedge,  
They laugh and build snowmen their joy plain to see  
And the icicles form on each gutter and tree.



Everyone loves to see virginal snow  
And no one wants the beauty to go,  
But we all love our tracks to be first on the ground  
And delight in walking with barely a sound.

It's at moments like these that time seems to slow  
Your spirits are high and you feel all aglow,  
The summer is grand with its shimmering heat  
But with the beauty of winter life just seems complete.



John Thorne



## KILMINGTON VILLAGE HALL



**THANK YOU** to everyone who has donated to the Village Hall Appeal to purchase solar panels and battery storage to help keep the Hall's running costs down as much as possible. Some clubs and organisations have made donations too and these are much appreciated. The total raised so far (mid-January) from your donations, many of which will be Gift Aided, is around £2,000. We will add this to the generous grant from our Parish Council and we are hoping to be successful with a grant application to East Devon District Council. We will hear the outcome in March and, if successful, this will bring us closer to the total needed for the installation. Nevertheless, it looks probable we may need further fund-raising activities during the spring/summer. We are determined to have the solar panels and batteries installed before next winter so that

- our hall's carbon footprint is reduced
- we can keep hire charges as low as possible

- the hall remains a warm and welcoming space for everyone.

If you haven't yet had the opportunity to donate using a Gift Aid envelope, and you would like to do so, envelopes are available from the Village Hall foyer or by contacting us (see below). The envelopes should be returned via the secure letterbox at the Baptist Church (just to the left outside the main entrance door). Alternatively, if you need further information about the project, there is a special email address.

Please contact us at: [solar@kilmingtonvillage.com](mailto:solar@kilmingtonvillage.com) or phone: 01297 35159.

Thank you so much for your help so far.

Judith, on behalf of Kilmington Village Hall Management Committee

## VILLAGE HALL '100+' CLUB

The winners of the draw held on 29 <sup>th</sup> November 2022				The winners of the draw held on 1 <sup>st</sup> December 2022				The winners of the Christmas Draw			
P Talbot	£30	R Addison	£5	M Prosser	£30	N Cromey-Hawke	£5	P Wood	£5	M Robinson	£5
G Gibbs	£15	L Reed	£5	L Hitchcock	£15	C Bolton	£5	A Heasman	£5	D James	£5
J Newbery	£15	E Birch	£5	B Woodsford	£15	J Jobson	£5	D Plant	£5		

A Happy New Year and our sincere thanks to all who have renewed their membership of the 100+ Club and to the new members who have joined for 2023. Application forms for anyone else who would like to join, at any time, are available from me at 8 Whitehayes Close, from Pauline Horwood at Blue Haze (opposite St. Giles' Church) or the New Inn. Alternatively, you can email me at: [jean-falconer@sky.com](mailto:jean-falconer@sky.com).

Just to remind you, the annual cost for an individual is only £11 and £20 for a couple – and members take part in a monthly draw with the opportunity of getting their money back – or even making a profit!

Completed forms and subscriptions should be dropped off with Pauline, the New Inn or with me.

All funds raised are used to fund essential maintenance to keep the Village Hall in good repair, so our sincere thanks for supporting the Hall Maintenance Fund.

For further details, please contact Jean Falconer on 01297-33708.

## SUDOKU CHALLENGE

Level: Medium

To solve this puzzle, each 3 x 3 square, row and column must contain all of the numbers 1 to 9. The solution is on page 17.

	1		8		5		3	
2								4
		3	6		9	2		
6		9	7		8	1		3
7		1	4		3	8		6
		4	1		7	5		
5								7
	6		5		2		9	



# PETER AND JANE IN THE GARDEN



'MAD Moments in the Garden' has been entertaining us for many copies of Postscript and will be a hard act to follow. So here goes! Jane will cover the garden and fruit and Peter the vegetables.

What an unusual year 2022 was in the garden! Looking back, I realise I spent a great deal of time worrying about trying to keep the plants most precious to me

alive, by selective watering and at a cost - not enjoying the summer weather as much as I should have done.

Consequently, I shall be investing in a few more water butts this year!

Everything in the garden has been thoroughly confused by 2022's long dry spell, followed by such a wet October to December. The leaves on the deciduous trees just didn't want to fall. Perhaps all the sunshine encouraged a greater than normal ability to photosynthesise, followed by plenty of water, enabling them to cling onto the branches for longer? I even had a *ceanothus* flowering for a second time in December!

It's 2023, have you planned what to grow this year? How about sweet peas? I have been saving toilet roll centres for my sowings. The roots grow through the cardboard and the whole thing can be planted out into its final place, without the need for plastic pots. Did you know that the first published list of sweet peas ever recorded was in 1793 and one of the then five varieties, was the pink and white Painted Lady, still available today!

I also sow other hardy annuals, such as *Ammi*, *Cornflower*, *Nigella*, *Bupleurum*, *Gypsophila* and *Californian poppies*, to name a few. These provide early to mid-summer cut flowers from which I make long-lasting, delicate, cottage garden type bouquets.

A new year, a new beginning in the kitchen garden. Of course, there will still be winter vegetables out there to be harvested, but thoughts will now be turning to what to grow and what varieties. Remember which did well last year? 2022 was a first for club root in my winter brassicas, which was odd, as the land had been grass until three years ago. So I am applying lime to my cabbage patch now (despite the PH being almost neutral) and will grow some resistant varieties. A few such varieties are: *Kilazol F1* (cabbage), *Lodero F1* (red cabbage), *Monclano F1* (broccoli), *Crispus F1* (sprouts) and *Clapton F1* (cauliflower).

What is F1? Basically, it is a hybrid from the selective breeding of a plant by the cross pollination of two different parent plants. In genetics, the term is an abbreviation for 'Filial 1', meaning 'first child'.

Another of last year's diseases was canker in my parsnips, caused by a fungus which enters the plant through injury. Carrot fly can cause sufficient damage to parsnips to allow the fungus in, so I shall try sowing this month, a bit later than last year. Also, hoeing can cause damage, so I will get down on my hands and knees and pull the weeds out with my fingers!! 'Albion' and 'White Gem' are two canker resistant varieties.

Happy gardening!

Jane Chalk and Peter Guy

## SPELL CHECK

I halve a spelling checker,  
It came with my pea sea.  
It plainly Marc's four my revue  
Miss steaks Eye can knot sea.  
I strike a key and type a word  
And weight for it two say  
Weather I am wrong oar right  
It shows me strait a weigh  
As soon as a mist ache is maid  
It nose bee four two long,  
And Eye can put the error rite  
It's rare Lea ever wrong.  
Eye have run this poem threw it,  
I'm shore your pleased to no,  
Is letter perfect awl the way  
My checker told me sew.

Submitted by Peter Ball

## JUST BE YOURSELF

She sat at the back and they said she was shy,  
She led from the front and they hated her pride,  
They asked her advice and then questioned her guidance,  
They branded her loud, then were shocked by her silence,  
When she shared no ambition they said it was sad,  
So she told them her dreams and they said she was mad,  
They told her they'd listen, then covered their ears,  
And gave her a hug while they laughed at her fears,  
And she listened to all of it thinking she should,  
Be the girl they told her to be best as she could,  
But one day she asked what was best for herself,  
Instead of trying to please everyone else,  
So she walked to the forest and stood with the trees,  
She heard the wind whisper and dance with the leaves,  
She spoke to the willow, the elm and the pine,  
And she told them what she'd been told time after time,  
She told them she felt she was never enough,  
She was either too little or far far too much,  
Too loud or too quiet, too fierce or too weak,  
Too wise or too foolish, too bold or too meek,  
Then she found a small clearing surrounded by firs,  
And she stopped...and she heard what the trees said to her,  
And she sat there for hours not wanting to leave,  
For the forest said nothing, it just let her breathe.

Unknown

# KILMINGTON GARDENING CLUB

## SEED SOWING, PRICKING OUT AND SOWING ON



[www.kilmingtonggardeningclub.co.uk](http://www.kilmingtonggardeningclub.co.uk)

Adam Wallis is the manager of Brimsmore Garden at Yeovil and he is a popular Gold Club speaker who entertained and enlightened the audience at the first talk and practical demonstration of the year on Friday, 13<sup>th</sup> January. He explained that plants are great survivors and have been able to adapt and evolve by using a fascinating array of reproductive methods in order to survive and increase in a wide range of often adverse habitats. Seeds come in all shapes and sizes – the Palm Coconut is the largest, and the Begonia is the smallest.

The satisfaction of growing plants from seeds is not without its complications! Are we attracted by the photo on a packet of seeds or are we seduced by well-known names? Many companies are now part of larger ones; for example, Suttons is now owned by Thompson & Morgan, but if it is the price that attracts us, it is worth noting that many of the seeds we buy come from the same source. F1 seeds are frequently disease resistant and tend to flower at the same time which is great for vegetable production. F2 seeds can give successive flowering, which is great for flowering plants.

Before planting anything, it is essential to sanitise seed trays using Citrox, which is recommended as being safe for nature, unlike Jeyes fluid. Seed trays can be made of plastic, wood, polystyrene and rubber. Plastic ones are made from recycled bottles and are therefore recyclable. Wooden ones are not so good as they retain moisture; trays made of polystyrene provide good insulation and can be recycled but are difficult to clean. Seed trays made of rubber are easy to use, clean and malleable and can be recycled, but they are expensive.

Having chosen your seed tray, a fine compost is required for planting seeds. There are various makes specifically for planting, but a multi-purpose compost should be fine. Be aware that peat-based compost will be banned from 2024. Adam suggests mixing compost with Perlite (which is made from volcanic blast), and preparing a few trays in advance. Water the trays and leave until required. Perlite is pH neutral and helps to aerate the compost as well as retaining moisture. Having sprinkled the seed on top, Adam uses Vermiculite as a top dressing to form a cap on the top. He demonstrated the action of watering (from side, across and off). Don't forget to label your plants and include the date and type of compost.

Place the seed trays in a propagator where the essential elements are water, oxygen, temperature and light. Water encourages the seed to swell and double, while oxygen unlocks the seed's energy. Check the temperature required for germination as it can vary from 2°C Fraxinus (Ash) to 25°C for zonal pelargoniums. Once the seedlings have emerged, remove the propagator lid, and leave in the light until they have no more than five leaves. At that stage they are ready to be 'pricked out' and placed in new compost in plug trays. Taking care to touch the leaf and not the stem of the plant, sow in a hole on the edge of the plug. Harden off before planting outside by gradually reducing the temperature for a few weeks.

Adam was most informative and readily answered questions so that everyone left feeling that they had learned something they could put into practice.

Jean Falconer

## PROGRAMME FOR 2023

This will be a busy year for The Gardening Club and its members.

After a very successful Christmas wreath workshop in December, we are now into our monthly talks programme. There are nine talks throughout the year. These are great social evenings too, having a friendly chat over a glass of wine or a cuppa.

There are three coach trips planned to some very interesting and beautiful gardens. Arlington Court - May 4<sup>th</sup>. Greenway - July 18<sup>th</sup>. Stourhead - September 14<sup>th</sup>.

More garden visits will be added to the diary, but these will be local, and a car share system will be in place.



Our plant market on May 13<sup>th</sup> will once again be offering very good quality and reasonably priced plants along with a coffee morning.

The biggest change will be on July 22<sup>nd</sup> when we will be holding our flower show as usual, which will be for flowers, veg and fruit only. We are hoping to incorporate the open gardens into our new 'gardening weekend'. (More details to follow)

The preserves, cakes, art, photography, and craft classes will now be held at the Village Show on September 9<sup>th</sup>.

There are also workshops planned for this year.

Whether you're an experienced gardener or just starting out, our club is there for you. We are a very friendly group of all ages, so if you just want to

come along and see what it's all about, we would love to welcome you.







## HAPPY NEW YEAR - 2023 HERE WE GO AGAIN!

Welcome to 2023 and a very happy New Year to you all.

We hope you have a good set of flippers, a boat or any other items that help while we survive the liquid sunshine of our glorious county! Looking back, in December we held our Christmas Extravaganza and it was so good to see so many out and about again! Our thanks to Millers for donating some Christmas Trees, Anton at Colyton Butchers for their donation, your colourful committee (below) and of course yourselves. We had a fantastic morning and would like to thank you all for your support and incredible generosity.



Since our last update we have been able to regenerate our 'First Friday of the month' get-togethers at the New Inn and it has been great to see so many joining us for a beverage and chat. Our next event in February will be the Devon County Annual meeting, where Jean Falconer, Peter Squire and myself will represent Kilmingdon branch. Our Spring Coffee morning this year will be on Saturday, 25<sup>th</sup> March in the Village Hall, 10.00 am to 12.00 noon. Please join us for refreshments and an opportunity to buy lots of goodies including cakes, plants, and much more. Look out for the posters!

### KILMINGTON'S LITTLE HELPERS

Sally Huscroft has written to Postscript to let us know that Little Helpers has reached its sell-by date and is now redundant. Covid and the help organised then for the village changed things and it has never re-started so we have now deleted it from the Village numbers at the back of the magazine.

On behalf of grateful clients in the past we would like to thank her for all the help they gave.

Editor

Finally, our current membership stands at 128, but as always, we are seeking more to join us. In particular we are seeking a volunteer to take up the mantle of treasurer, so if you are keen to join us or know somebody else who might help fill the post, please don't hesitate to contact me. Please see below the key 2023 dates for your diary:

Sat	25th	March	Spring Coffee Morning
Fri	7th	July	Family BBQ
Fri	6th	October	AGM (TBC)
Sat	21st	October	Trafalgar Night (Black Tie Dinner)
Sat	11th	November	Armistice Day
Sun	12th	November	Remembrance Sunday
Sat	2nd	December	Christmas Coffee Morning

In the meantime, we look forward to seeing you all in 2023 and thank you again for supporting the Royal British Legion. Please take great care and stay safe.

Cdr Staff Seward OBE RN Rtd  
Chairman RBL Kilmingdon Branch  
07799612557  
e-mail: t60sas@hotmail.co.uk

### KILMINGTON BIG BREAKFAST

**Saturday 11<sup>th</sup> March 2023**  
**Kilmingdon Village Hall**

**starts 9.00 am**



**last orders**  
**12.00 noon**

**Full Breakfast: £8.00**

(coffee/tea; juice; fruit salad; cereal; sausage, bacon, egg, tomato, mushroom; toast/jam/marmalade)

**Light Breakfast: £4.00**

(coffee/tea; juice; fruit salad; cereal; toast/jam/marmalade)

**Morning Coffee: £3.00**

(coffee/tea with cake)



**\* Cake stall and tombola \***



**Age 5 and under free**

**Age 11 and under half price**

**DO COME AND JOIN US**  
**TO SUPPORT CANCER RESEARCH UK**

Further information, please contact:  
Alison 07796 424 860

**GIFT AID ENVELOPES AVAILABLE**

Cancer Research UK Registered charity number: 108 9464



# Kilmingington Village Christmas Celebration



## A Christmas Celebration – but not quite as planned

Well, the joint Christmas Celebration Party didn't quite go as planned. However, it was well attended and all enjoyed the occasion. With a forecast of gales and heavy rain Santa decided that he wouldn't be doing his parade through the village. But he did visit the village hall and his helpers had set up a Santa's Grotto behind the stage. Over 30 children visited him, had a chat, and left thrilled to bits.

In the hall, a large congregation from Saint Giles 'Church carol service joined other village residents for complimentary mulled wine, mince pies and goodies for the kids.

Behind the scenes the kitchen staff had to deal with the village water supply being cut off and our heating urn giving up!

Some seasonal entertainment was provided on stage by the newly formed Kilmingington Hand Bell Group. The less than serious Kilmingington Klangers, who have been trying to ring for several years now, followed with an attempt at several Christmas songs. This was, as usual, more of a 'Guess that Tune'. A few of the organisers also performed a humorous version of The Twelve Days of Christmas. This was made even more chaotic, as half the cast were stand-ins as the original players were ill and couldn't turn up.

A village Christmas Tree had been kindly donated by Millers Farm Shop and positioned outside the hall. Decorations were provided and hung by the Kilmingington Community Group. Malcolm Miller pulled the switch after a countdown for the official turning on of the lights. That night after all were wrapped up warm in bed, a strong gust of wind blew the tree over. The following morning a rescue job was done collecting the baubles from around the car park and rehangng them! This time the tree was firmly fixed to the wall.

Thanks to all those who were involved and to those who dived in to help at the eleventh hour. Overall, it wasn't quite the polished event that had been envisaged. However, for a first attempt at a joint Christmas Celebration, we did learn a lot. There will be another party this year with an improved format and hopefully without all the behind-the-scenes chaos..

**Kilmingington Community Group.**

## Kilmingington Village Public Houses are both open again

### The New Inn

In early November 2022 Vikki and Spike took over the New Inn. They duly opened a few weeks later after the work in the Cellar had been completed by Palmers Brewery and the redecoration in the Bar.

They have been busy with the festive period and have hosted a Bingo Night and Curry Evening so far, with a Quiz Night scheduled for the end of January 2023.

They are also doing Pensioners' Lunches on a Wednesday between 12-2pm, and have started a Takeaway Meals service.

They are looking forward to the better weather for some forthcoming events, which are planned for the garden. These include the Spring Market and the Summer Garden Party! Look out for information on-line and posters in house and around the village.



They would like to say a big thank you to all those who have supported them since opening. It has been a great adventure and they look forward to seeing you all in the coming months.

### The Old Inn Reopens

In mid-December Babs and Joe opened the bars at the Old Inn once again. Joining us from North London with many years of experience in the pub business, they are looking forward to getting the Free House up to full swing.

The bars have already been redecorated and winter opening hours are from 12 noon to 10pm. Children and dogs are welcome inside and in the large garden.

An upgraded kitchen is being finished and will open during February to offer a full pub grub menu, specials, smaller senior meal portions and a kids menu. There will even be a dogs menu!

Returning the village pub will give us a skittle alley, and darts and boule will also be reintroduced soon.

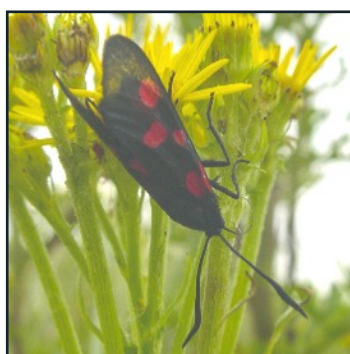


A beer festival is also planned in the summer with guest ales throughout the year.

If you haven't already met Babs and Joe, they're looking forward to welcoming you, pop in and say hello!



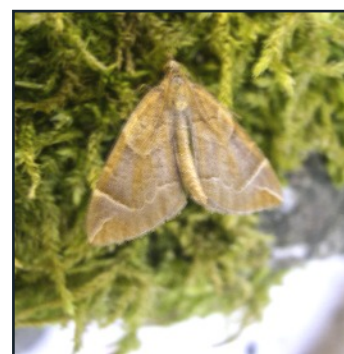
## MOTH UPDATE - FEBRUARY 2023



Narrow-bordered 5 spot  
Burnet  
*Zaegena lonicerae*



Lime-speck Pug  
*Eupithecia centaureata*



Chevron  
*Eulithis testata*



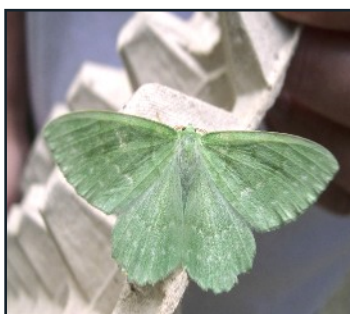
Northern Spinach  
*Eulithis populata*



Treble-bar  
*Aplocera plagiata*



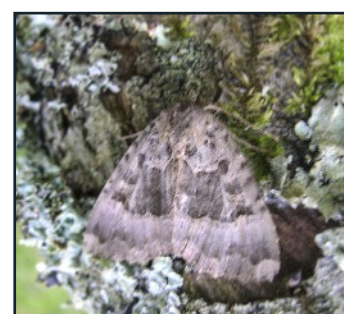
Clouded Magpie  
*Abrazas sylvata*



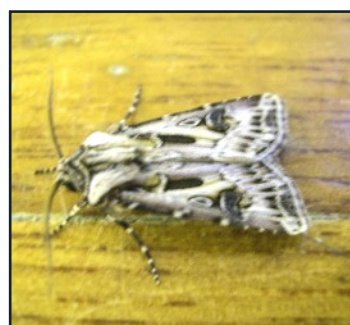
Large Emerald  
*Geometra papilionaria*



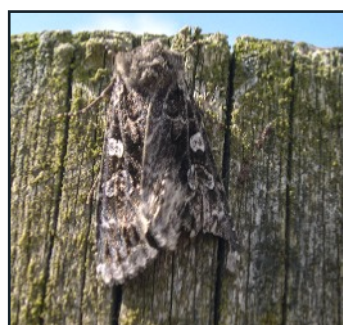
Mouse Moth  
*Amphipyra tragopoginis*



Old Lady  
*Mormo maura*



Archer's Dart  
*Agrotis vestigialis*



Great Brocade  
*Eurois occulta*



Ruddy Carpet  
*Catahoe rubidata*

David Wilsdon

## FEBRUARY 2023 MOTH UPDATE - AN EXPLANATION

For a variety of reasons, including a host of cold, wet and windy periods of weather, since July I have not been able to undertake enough trappings to be able to present photos of twelve Kilmington moths that have not yet been included in the Kilmington Postscript. So, this month, for a change, the display is of interesting moths which I have come across while attending Moth Courses over the years. It is always a thrill to see a species for the first time, and, of these, perhaps the most exciting for me to find was the Giant Brocade. It

was on a Field Trip, mainly looking for butterflies and day-flying moths in Perthshire. We had also been told that, because of a lack of cover, it was possible to find other moths spending the days on field-posts, so I thought I would put that to the test for myself, and actually finding the Great Brocade was a bonus.

David Wilsdon.

## WORK ON THE COMMON VOLUNTEERS WELCOME

Work has once again started on Kilmington Common, thanks to Judith Simpson. A two-hour session was held on Wednesday, 11<sup>th</sup> January between 10.00 am and 12.00 noon. Judith sends her thanks to all of those who came along to help. Apparently, the session started off with the sun shining which lasted for a good hour and a half. A heavy hailstorm then brought the session to an end. A good number of oak saplings were removed which were encroaching into the grass and more bramble roots were also dug up and disposed of.

There will be work parties on Wednesday, January the 25<sup>th</sup>, Wednesday, February 8<sup>th</sup> and possibly Wednesday, February 22<sup>nd</sup> – all between the hours of 10.00am to 12.00 noon. We pray that the weather will be nice for them on all three days.

Anyone who would like to help would be most welcome. Judith would love to see lots of people present and willing to help. Sturdy gloves are a must and garden forks and pickaxes would be very useful – if you have them. Judith advises that she is hoping to try and have some variety in the coming tasks.

If you would like to help then please contact Judith via email (simpsonjudith71@gmail.com), or, via the telephone (01297 32694 – please call before 8.00 pm only).

After February, going into March, the plan is possibly to stay off the areas that have been worked on to allow some land recovery and to begin to observe what different plants are emerging.

Christopher Thorne

### THE PAVILION, KILMINGTON



## Lent Lunches

From Thursday 2nd March

12.00 noon

Donations welcomed

Enjoy soup and rolls, and good company.

Cheese and biscuits to follow

We will be supporting Tearfund and  
The Children's Society

CONTACT: CHRISTINE THORNE ON  
07814041059

## SUDOKU SOLUTION

4	1	6	8	2	5	7	3	9
2	9	5	3	7	1	6	8	4
8	7	3	6	4	9	2	5	1
6	2	9	7	5	8	1	4	3
3	4	8	2	1	6	9	7	5
7	5	1	4	9	3	8	2	6
9	3	4	1	8	7	5	6	2
5	8	2	9	6	4	3	1	7
1	6	7	5	3	2	4	9	8



February sees us celebrating Shrove Tuesday and Valentine's Day, so I have included a couple of suitable recipes. Although traditional pancakes are delicious, they can be time consuming to cook, Scotch pancakes however are very quick to make and cook, so are a good alternative if time is short. Custard Kisses are a version of homemade custard creams. Don't forget to send in any recipes which you would like to share with the village.

## CAULIFLOWER CHEESE SOUP

Serves 4-6

1 large onion, finely chopped  
1 stick of celery, finely sliced  
25g/1oz butter  
1 tbsp olive oil  
500g/20oz trimmed cauliflower florets  
1 medium potato, peeled and diced  
500ml/ 20 fl oz milk  
400ml/16 fl oz vegetable stock  
100g/4oz cheddar cheese, grated  
1 tsp Dijon mustard  
Salt and pepper  
Chopped parsley and croutons to serve (opt)



### Method

1. Put the onion, celery, butter and olive oil into a large saucepan and cook over a gentle heat for 7-8 mins until the onion and celery is soft but not coloured.
2. Add the cauliflower, potato, milk and stock and simmer gently for about 30 mins or until the vegetables are tender.
3. Remove the soup from the heat and whizz with a hand blender until the soup is smooth. Add the cheese and the mustard and blend again. Season, reheat and serve topped with some crunchy croutons and a sprinkling of freshly chopped parsley.

## SCOTCH PANCAKES

Makes approx. 20

175g/6oz self-raising flour  
1 tsp baking powder  
50g/2oz caster sugar  
1 egg  
200ml/8floz milk  
To serve: maple syrup, mixed berries, Greek yogurt or cream.

### Method

1. Mix the dry ingredients together in a bowl. Add the egg and start whisking, then gradually add the milk until a smooth batter, the consistency of thick pouring cream, is formed.
2. Heat a little oil in a non-stick frying pan, drop a dessertspoonful of the mixture into the pan, giving room for the pancakes to spread. Cook for approx 1 minute on each side. Repeat until all the mixture has been used up. Serve with toppings of your choice.



## CUSTARD KISSES

Makes approx 30 biscuits

175g/7oz softened, unsalted butter  
50g/2oz golden caster sugar  
50g/2oz icing sugar  
2 egg yolks  
1 tsp vanilla essence  
300g/12oz plain flour

### Custard filling:

100g/4oz sifted icing sugar  
2 tbsp custard powder  
100g/4oz softened, unsalted butter

### Method

1. Cream the butter, sugars, vanilla essence and egg yolks together until light and fluffy.
2. Mix in the flour in two batches. Once the biscuit mixture is combined, allow to rest in the fridge for 5 minutes.
3. Roll the dough out to the approx thickness of a £2 coin and cut out as many biscuits as you can before re-rolling and re-cutting until all the mixture is used up. Traditionally Custard Kisses are oblong, but I use a 6cm round cutter. If the biscuits are for a Valentine's present, use a heart shaped cutter.
4. Place on greased baking sheets and cook at 180C fan/200C/gas 6 for approx 10 minutes. Cool on a wire rack.
5. Whilst the biscuits are cooking and cooling, make the filling by combining all the ingredients together.

Sandwich two biscuits together at a time with the custard butter cream and dust lightly with icing sugar.



Diane Overton

## **‘A QUESTION OF RELIGIOUS EDUCATION’**

### **Principles and Squabbles – Controversy in a Divided Village**

Kilminster's Edwardians found themselves thrust into public scrutiny and bitter controversy because of a matter which became a thorn in the side of the government. Their story filled regional newspapers for much of the first decade of the 20<sup>th</sup> century.

The problem came from an unlikely source: a change of legislation intended to standardise and improve the education system. The 1902 Education Act was one of the most acrimonious pieces of legislation of the era, advanced by Lord Salisbury and championed by his nephew Arthur Balfour, both Prime Ministers of that year. Also known as the Balfour Act, its intention was to buttress the nation's education by disbanding school boards, establishing 'local education authorities' and providing financial support for 'church' schools which were usually managed by the Church of England and responsible for educating a third of the nation's children. The new Act required that those schools would be funded from the 'poor rates' which all paid.

Many of Kilminster's parishioners, as members of the Baptist Church, were non-conformist and favoured the 'board' schools. They resented legislation which compelled them to pay rates to educate their children against their beliefs which had effectively been set aside. *Why should church schools receive rate-payers funding? Why should their own children's education be biased towards the Church of England or Catholic doctrines?* These seemed reasonable points for the Kilminster Baptists to make.

Nationwide protestation against the Act became known as acts of 'passive resistance' and non-conformists refused to pay part of the 'poor-rates'. Kilminster's movement was led by the well-respected Baptist Minister Reverend Richard Bastable who, with many others of his flock, chose to break the law in this way. He was frequently summoned to the magistrate's court for the 'usual order' of seizure of goods to defray arrears of the rates.

On 2<sup>nd</sup> March 1904, the *Exeter and Plymouth Gazette* reported that Rev Bastable had said that he felt unable to willingly pay the education rate because *'...in some of the schools which were now supported by the rates, children were taught his religion was a lie, that his children were heathen, and that in the House of Prayer in which he worshipped the spirit of the Lord did not come.'*

On 17<sup>th</sup> September the same year, the *Chard and Ilminster News* reported that an auction of goods seized by the police from Kilminster's 'passive resisters' had been held at the Baptist Schoolroom where such household items as coal scuttles, pictures and cloth were sold to the 'highest bidder'. As was usual, the sale was sympathetically prearranged and nothing but a charade; the only person bidding returned everything to their original owners. In this way, Kilminster's Baptists would not be wilfully paying the rates. But this was not always the case; nationally, many were sent to gaol for their principles.

The last record I have found which confirmed that the 'Kilminster Resisters' were summoned to the magistrates court for non-payment of rates was in 1909, although in many parts of the country such resistance continued until the onset of World War I in 1914 which diverted attention.

But if this was the principled part of the story, Kilminster had another side to show.

Between 1902 and 1904, regional newspapers filled hundreds of column inches headed with titles such as 'Unhappy Kilminster' and 'School Dispute'. They recorded numerous events, many of which can be accurately described as petty acts and spiteful squabbles between important local men. Petty or not, the root of the problem was the same and related to the important issue of religious instruction at Kilminster School. *But who owned the school?*

On one side stood the Parish Council which claimed the building and management for its own. The chairperson, who had a vested interest, was the same Rev Bastable who would take his non-conformist principles to the magistrates every year. The Council would ensure that the school was managed without denominational teaching. Its argument relied upon 30 years of convention and an 1866 agreement made between Charles Tucker Esq of Coryton Park and the Church when the school was being built.

On the other side, the Church of England stood firm. Its incumbent clergymen were locally led by Rev Arthur Slipper who was reported to be fighting the *great fight of important principle and the right of the church*. It would teach Kilminster's children its own doctrine, funded by the ratepayer. The Church's argument relied upon a 1672 deed which claimed the land to be for the *perpetual use of the parish church*. Nothing was clear or easily settled.

Various accusations of family-cliques and petty obstruction were made. Personal insults inflamed the deadlock and further fuelled newspaper reports. Arguments over the fraudulent election of the school managers were heated and there were calls for secret ballots.

The dispute rumbled on, intensifying for two years, and poisoning previously harmonious village relationships. In May 1903, *The Western Times* reported that Kilminster was a village 'rent in two'. Others reported a village divided by *bad blood and feeling*. Two thirds of Kilminster's children were non-conformist, and many were taken out of the school in protest. Parishioners boycotted the Church; if there was moral high ground to be taken it is difficult to see who occupied it.

The matter was settled in January 1904 when the Board of Education decided that Kilminster School should be managed by the Church of England. This infuriated many of the parishioners who resented the newly imposed religious testing for the teachers and the need for denominational teaching, but their appeals were unsuccessful. All the Baptists could do was keep up their acts of 'passive resistance'.

Despite the national resistance to the Education Act, it was not repealed, but it did become a large nail in the coffin of Balfour's government which lost by a landslide in the 1906 general election.

As for Kilminster, in 1932 *The Western Times* reported that although the dispute had not entirely burned out, the school managers were by then desirous to 'hand-over the school to the Council'. The transfer was complete two years later.

Alan Clarkson

## AXMINSTER AND LYME CANCER SUPPORT

[www.axminsterandlymecancersupport.co.uk](http://www.axminsterandlymecancersupport.co.uk)

[www.facebook.com/axminsterandlymecancersupport.co.uk](https://www.facebook.com/axminsterandlymecancersupport.co.uk)

Tel: 07512 279663

Email: [info@axminsterandlymecancersupport.co.uk](mailto:info@axminsterandlymecancersupport.co.uk)

**Mailing address: Axminster and Lyme Cancer Support, Heathermoor, Yawl Hill Lane, Yawl, DT7 3RW**

In the monthly newsletters ALCS hopes to keep its regular clients and any new readers informed of what help is available from many different sources for those coping with the process of cancer diagnosis, treatment, recovery and convalescence, which is often lengthy, complicated and daunting. It offers up-to-date information as well as support through a difficult and demanding experience for them and their families.

This month's newsletter introduces two new therapists who have recently made themselves available to ALCS. Paula Haynes helps patients with Health and Wellbeing while Rob Powell offers Counselling and Psychotherapy.

There are dates in February for an online creative writing course on Zoom and for the courses at the Creative Hub at the Stanley Studios in Kilminster. A series of acrylic art

workshops will start in March and those interested are invited to attend all of them or just some, as they wish.

Dates and events in February include:

Wednesdays 1, 8, 15, 22 February 11.00 am-12.30 pm on Zoom. Creative writing course with Ninette Hartley.

Thursdays 2, 9, 16 February 10.00 am-12.00 noon at the Stanley Studios, Kilminster – continuing to work with Sharon Thomas through her 'Wonderful Workbook' on 'simple steps to find work you love after a break'.

If you wish to receive the full newsletter with more information and detail, or to book a place or have any queries for ALCS, please use one of the addresses above to contact them.

### MILLERS FARM SHOP FUEL PRICES!



Prices of fuels have rocketed this year, but we are confident that our prices are still very reasonable and some may even say 'cheapest around'!

Our sacks of logs are processed and season-dried here on site, with a moisture content of less than 20%.

Homefire Ovals 25kg - £16.99

Brazier Smokeless 25kg - £13.99

Anthracite 25kg - £13.99

Sack of Logs - £6.49

Dumpy Bag of Logs - £80

60lt Kiln Dried Logs - £13.99

Kindling - £5.99

Eco Fuels - From £3.79

These prices may vary.

Unfortunately, we are unable to offer a delivery service.

***Please support your local, independent shop.***



**Axe Valley Motors**  
**01297 34217**

We pride ourselves in customer service and offer free collection and delivery or a loan car.



#### **Our Services**

MOT's

MOT repairs

Menu price servicing

Diagnostics with the latest tools

General repairs

Welding

Small body repairs

**Contact Alistair or Jenny to book or receive a quote.**





## Are you worried about your Tax Returns?

We provide a friendly, professional service for self assessment returns, business accounts and all aspects of taxation based on experience, qualifications and confidentiality.

### HOME VISITS AVAILABLE

For an initial free meeting please telephone our office and ask to speak to Hayley Perham (Taxation Director) or email: [crwaccountants@btconnect.com](mailto:crwaccountants@btconnect.com)

**Telephone 01297 553286**

The Personal, Professional approach to Taxation, providing "Peace of Mind"

CRW Accountants Ltd  
The Mews, Queen Street, Colyton, Devon  
EX24 6JU  
[www.crwaccountants.co.uk](http://www.crwaccountants.co.uk)

# eyecatching

## DRESSMAKING AND DESIGN

in Kilmington Village

Discuss your requirement with Rosemary  
Tel. 01297 639270

## Stuart's Sweeping Service

*Your local chimney sweep*



**07432 118318 or 01404  
831288**

Evening and weekend appointments available.

## Vicary & Co

Estate Agents & Valuers  
Residential - Commercial - Rural

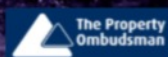
**Thinking of selling?  
Call us today to arrange a  
FREE market appraisal of  
your home.**

Vicary & Co Estate Agents & Valuers

5 South Street | Axminster | Devon | EX13 5AD

01297 33449 | [sales@vicaryandco.com](mailto:sales@vicaryandco.com) | [vicaryandco.com](http://vicaryandco.com)

Sales Manager Kelsey Lawrence  
Ian Vicary MRICS FISVA MARLA FAAV Pg Dip (Arch Cons) - Chartered Surveyor &  
RICS Reg. Valuer



## FUNERAL DIRECTORS & MONUMENTAL MASONS

# W. G. POTTER

Julian & Karen Hussey DipFD NAFD

*~ a family business ~*

### Dignified, Professional & Caring

- Offices also at Bridport, Seaton, Honiton & Ottery St. Mary
- Pre-arranged & prepaid funeral plans

*Members of The National Association  
of Funeral Directors  
Recommended by The Good Funeral Guide and  
The Natural Death Centre*

West Street, Axminster EX13 5NX

**01297 34283**

[www.funeraldirectors.uk.com](http://www.funeraldirectors.uk.com)

## A FEAST FOR THE EYES....BUT AN EYESORE FOR THE ENVIRONMENT?

Are you a regular meal deal picker-upper? There have been articles about the number of excess calories and sugar in some of them and which supermarket offers the best value lunch deals, but how many articles have been written about the incredible amount of single use plastic involved? It has been estimated that the average British consumer will spend £10,000 on lunchtime deals over their working life!

Let's take the average meal deal – a sandwich/wrap, drink, packet of crisps and let's not forget that hit of sugar in the form of a choc bar! That is a minimum of four pieces of single-use plastic per meal deal: break it down even further to the plastic bottle with its screw top, inner seal and plastic label, the sandwich wrapper with its plastic window and a probable coating of thin plastic on the cardboard (to keep it fresh?). Or what about that Sushi portion with its black plastic bottom which the recycling machines can't spot, a pasty, pot of fruit, a serving of nuts or perhaps a salad bowl, the last three of which include the thin plastic film lid?

One might argue that all these items are carefully taken home to be recycled kerbside or popped into the buyer's stash of specialist recycling schemes in the garage, but

realistically this is not the case. More likely the items are all binned and in many cases these items are collected during litter picks, having been carelessly tossed out of car windows.

Many people are busy juggling work and family commitments, but have we become too used to the convenience of it all? There is very likely to be bread in the cupboard, squash or juice in the fridge, water on tap (with fewer microplastics in it than in bottled water), a multi-pack of nibbles in the drawer, maybe leftover food to use up from which we can put together a lunch within less than ten minutes. Could a Sodastream or Drinkmate be the answer to having a fizzy drink with lunch; this would also save some of the 90,000 or so tonnes of fizzy drinks bottles produced every year? Could we perhaps spend ten minutes less on the Internet and social media (who doesn't like a bit of social media and Ebay scrolling!) to do this?

Of course many folks scrupulously put together a home-made packed lunch together each day but perhaps, if not, it's something to think about.

Kay Pike



## HOSPISCARE MEN'S WALK

**Join the Hospiscare team at the Double Locks, Exeter on Saturday, 18<sup>th</sup> March 2023, or take part 'your way' by choosing your own route and location, to raise vital funds for your local hospice.**

Whichever way you join, everything to love about Men's Walk will remain the same. You'll get your own Men's Walk t-shirt, a drink courtesy of Exeter Brewery, a pasty supplied by Chunk of Devon, the rugby, a great day out and the chance to support Hospiscare!

Whether you walk your own route or start at the Double Locks, you will be walking to support local people living with a terminal illness.

Saturday, 18<sup>th</sup> March 2023

11.00 am – 7.30 pm

£25 per person or £20 each as part of a group of 6 or 10

For more information please go to:

**[www.hospiscare.co.uk/events/mens-walk](http://www.hospiscare.co.uk/events/mens-walk)**

Ali McGeowan

## NEW TEAM AT THE NEW INN

Returning to Devon, Spike Phillips thanked everyone for their welcome to Kilminster Village. He said, "We've been after this pub for a while and now we are here we have been made so welcome. The area is fantastic, and we are encouraged by all who have come along so far. We are looking forward to getting to know more people in the New Year."

Landlady Vikki Phillips explained, "As well as fine real ales, we offer home cooked food. Get in touch by phone (01297 33376 or via our website [www.thenewinnkilminster.co.uk](http://www.thenewinnkilminster.co.uk)".

We wish them well in their new life and business.

Reverend Julie



*From right to left: Molly James, Spike and Vicki Phillips*





**Based in Kilminster** & providing all aspects of **Repair, Refurbishment & Renovation.**

Including (but not limited to!):

- ✓ General Building Repair and Maintenance
- ✓ Bathroom and Kitchen Remodelling
- ✓ Interior and Exterior Decorating
- ✓ Regular Garden Maintenance
- ✓ Landscaping and Minor Construction
- ✓ Flat-pack Construction (no more frustration!)
- ✓ A lot more - just ask!

Call **Simon** on **07939 242 101** or email  
**simon@bpmaintenance.co.uk**  
**www.bpmaintenance.co.uk**

*"A friendly and efficient service, available in  
 East Devon and West Dorset"*

## §Khushi Kitchen

Fancy a **HOMEMADE** local curry?

**Then why not try a §Khushi  
 authentic curry experience.**

- ❖ **Kilminster's Friday curry takeaway**
- ❖ **Fresh Frozen Curries available EVERYDAY  
 @ The Old Barn (honesty box system)**
- ❖ **Catering for all occasions, please enquire  
 for a personalised menu**

**Email:** [mina@khushi.kitchen](mailto:mina@khushi.kitchen)

**Web:** <http://khushi.kitchen>

**Addr:** The Old Barn, The Street, Kilminster EX13 7RJ



khushi kitchen-axminster devon & dorset

Check the website regularly for §Khushi's  
 future events and pop-up kitchens.

**Mina x**



## A.G.M.

Axminster Garden Machinery

SALES • SERVICE • SPARES  
 Independent Specialists



**FACTORY APPOINTED  
 AUTHORISED DEALERS  
 OF ALL POWER  
 EQUIPMENT WE SELL**



**Proper Horticultural Engineering since 1979**

**Visit our  
 well stocked  
 showroom  
 now**



**Always  
 Great Deals  
 Available**

Unit 1A Weycroft Avenue, Millwey Rise, Axminster, EX13 5HU  
 Tel: 01297 631186  
[www.axminstergardenmachinery.co.uk](http://www.axminstergardenmachinery.co.uk)



[www.hunthay.co.uk](http://www.hunthay.co.uk)

**Secure Containerised Self Storage**

**Suit Business or Domestic use**

**Caravan + Motorhome Storage**

**Industrial + Starter units**

**Easy, long day & weekend access**

**Owner lives on site**

**Close to A35**

[jenny@hunthay.co.uk](mailto:jenny@hunthay.co.uk)

**Phone: 01297 33839 / 07779 550771**



## WOOF'S N WAGS PET SERVICES



**DOES YOUR DOG NEED WALKING?  
GOING AWAY OR WORKING AND NEED  
SOMEONE TO LOOK AFTER YOUR PETS?**

**WE CAN CARE FOR ALL YOUR PETS  
DOGS - CATS - RABBITS - CHICKEN &  
DUCKS - REPTILES**

- DOG WALKING
- PET SITTING
- DAY CARE
- OVERNIGHT STAYS

**PLEASE CALL MANDY 07810648433  
woofsandwags21@gmail.com**

## REFLEXOLOGY TREATMENTS — HONITON —

*Feeling tired  
& in need of  
a pick-me-up?*

**RELAXING FOOT MASSAGE  
TO RELIEVE STRESS &  
REBALANCE**



*Appointments available.*

CONTACT PAULA  
**07912 351382**

PAULA FENEGAN

★ GIFT VOUCHERS  
ON REQUEST



[www.paulafenegan.co.uk](http://www.paulafenegan.co.uk)



## NIGEL PHILLIPS GARDENING SERVICES

Does your garden need a good tidy

**READY FOR SPRING**

Phone Nigel Phillips 01297 35302

Also regular grass cutting and up-keep all  
year. Friendly local service.

## AERIALS & CABLES

**AERIAL REPAIRS & INSTALLATIONS**

Digital Upgrade

FM • Multi-Points

*Free Estimates*

0781 4481 833



## MOPSY MOPS

CLEANING & DOMESTIC SERVICES

*SMALL JOBS TO  
SPRINGCLEANS.*

MATURE FEMALE CLEANER  
CALL SADIE  
0129734367  
MOBILE 07779703388



**01297 816002**  
[lawsoncomputers.co.uk](http://lawsoncomputers.co.uk)

Inside **Waffle**  
TRINITY HOUSE  
AXMINSTER

M  
N  
R

## MNR MOWERS LTD

Unit 8 Devonshire Court  
Heathpark Industrial Estate  
Honiton, Devon EX14 1SB

01404 548300

ANDY MOYLE

**SALES SERVICE SPARES**

Collection & Delivery in East Devon

For all types of Garden machinery

Tel 01404 548300 Fax 01404 548301

[MNRMOWERSLTD@UNIT8.ECLIPSE.CO.UK](mailto:MNRMOWERSLTD@UNIT8.ECLIPSE.CO.UK)

# AXMINSTER PRINTING CO LTD

TEL: 01297 32266

*Not just a Printing Company.... Established in 1969*



## Printing & Design Services

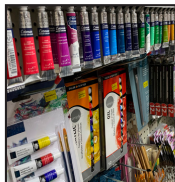
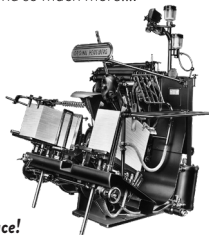
Leaflets, Posters, Booklets, Books, Labels, Tags, Menus, Banners, Magazines, Canvases, Order of Services, Headings, Business Cards, Appointment Cards, Compliment Slips, Headed Cards, Bookmarks, Invoice and Order Forms, Delivery Forms, Folders, Vouchers, Loyalty Cards, Wedding and Business Stationery, Plans, Prints (any Size up to A0) and so much more....



## Stationers

- Student Essentials
- Computer Inks & Toners
- Business Machines
- Packaging Supplies
- Filing Products
- Office Stationery

**All your stationery needs in one place!**



## Art & Craft Supplies

- Art supplies for the student or hobbyist
- Card making materials
- Lots of craft products and activity sets for children



Website: [www.axminsterprinting.co.uk](http://www.axminsterprinting.co.uk) Email: [sales@axminsterprinting.co.uk](mailto:sales@axminsterprinting.co.uk)

Address: Axminster Printing Co. Ltd. West Street, Axminster, Devon EX13 5NU

# Vintage Engineering

An engineering company with a difference. We cater for the one offs and bespoke items, in Metal (welding and fabrication) wood, and mechanical objects.

We restore Vintage/Classic cars and motor bikes, M.O.T. Welding, repair gates, stairs, individual items, make new objects in steel, stainless and aluminium and manufacture or repair wood and mechanical items.



Do you have those broken or damaged objects that you need repairing or replacing that will not cost the earth, and those home repairs or builds that no one seems interested in, we can give you a cost to do those things you just want sorting.

Call 07444 244 562 —

Whitchurch Canonorum

[vintageengineering.co.uk](http://vintageengineering.co.uk)

# Chris Stubbs Electrical

Est 1981

OFFICE ADDRESS: UNIT 2,  
THE ASSEMBLY ROOMS,  
GUNDY LANE, BRIDPORT,  
DORSET, DT6 3RL

Bridport Office No. 01308 422726

Kilminster Home No. 01297 631244

Mobile No. 07836 247294

email: [StubbsChris@hotmail.com](mailto:StubbsChris@hotmail.com)

**"For a friendly service  
at a competitive price call us today"**



## GREEN MACHINES

Mobile Garden Machinery Repair

FORMERLY DAVID GEAR HORTICULTURAL

# Oliver Newton

## Service & Repair of all Garden Machinery

## Call Oliver Today!

01297 23913





### WEEK TO VIEW (Events that happen the same time every week)

Sunday	10.30 am	The Beacon	Service
Monday	early	Your house	Recycling collections
	2.00 - 4.00 pm	Village Hall	Country Dancing
Tuesday	10.00 - noon	The Beacon	The Post Office
Wednesday	9.30 am	The Beacon	Toddlers and Tinies (Term time only)
	10.00 - noon	St Giles' Church	Mums and Babies Support Group
	2.00 - 4.00 pm	Village Hall	Short Mat Bowls
Thursday	7.00 pm	The Beacon	Alpha Course
Friday	10.00 - noon	St Giles' Church	Coffee and a warm welcome

### DATES FOR FEBRUARY 2023

Fri	3rd	7.30 pm	Village Hall	Historic Picture Tour of Kilmington
Sun	5th	10.30 am	Stockland Church	Mission Community Holy Communion
Tue	7th	9.30 am	St Giles' Church	Said Communion - Rev Julie
Tue	7th	10.30 am	The Beacon	Messy Sparklers
Wed	8th	7.15 pm	Village Hall	Kilmington Cinema Club: <i>Fisherman's Friends One and All</i>
Thur	9th	2.00 pm	Village Hall	Kilmington Cinema Club: <i>Fisherman's Friends One and All</i>
Fri	10th	7.30 pm	Village Hall	KGC Talk: <i>Grow the Food you can't Buy</i> - Kathy Crouch
Sat	11th	3.00 pm	St Giles' Church	Celebrate Service: <i>The Lost Coin</i>
Sun	12th	11.00 am	St Giles' Church	Morning Worship - Anna Crabbe
Mon	13th	7.30 pm	Pavilion	Parish Council Meeting
Wed	15th	7.30 pm	Village Hall	Kilmington Players: <i>Jack and the Beanstalk</i>
Thur	16th	7.30 pm	Village Hall	Kilmington Players: <i>Jack and the Beanstalk</i>
Fri	17th	8.00 am	The Beacon	Men's Breakfast
	17th	7.30 pm	Village Hall	Kilmington Players: <i>Jack and the Beanstalk</i>
Sat	18th	7.30 pm	Village Hall	Kilmington Players: <i>Jack and the Beanstalk</i>
Sun	19th	9.30 am	St Giles' Church	Said Communion - Rev Julie
Tue	21st	12.30 pm	The Beacon	Community Contact Lunch
Sat	25th	8.30 am	The Beacon	Women's Breakfast
Wed	22nd	7.00 pm	St Giles' Church	Mission Community Holy Communion
Sun	26th	9.30 am	St Giles' Church	Morning Worship - Marc K

## DONATIONS, PAYMENT FOR ADVERTISING SPACE AND ARTICLES/NOTICES FOR POSTSCRIPT (i.e. THOSE NOT SENT BY EMAIL)

**It has been necessary to set up alternative arrangements following the closure of the village shop.**

**DIRECTIONS FOR FINDING** Vicky Larcombe's house. Vicky is treasurer for Postscript.

From Whitford Road turn left and walk up The Street, passing Koppers, Kushi Kitchen, the Bull Pen and West Gate on your right. The next house is **Brookside** where Mrs Vicky Larcombe lives. If you find yourself crossing Meadow Bank, you have gone a few steps too far.

Please post payments for advertising in Postscript and donations to help with printing costs  
through the front door of Vicky Larcombe's house. Thank you.

## USEFUL TELEPHONE NUMBERS

### VILLAGE NUMBERS

Bell-ringing - Celia Dunsford	01297 33563	KGC - Bev Perkins, Secretary	01297 631801	Short Mat Bowls - Edith Turner	01297 34090
Bridge Club - Eric Samways - Gill Bullock	01297 24260 01297 647768	Kilminster Community Cinema - John Watts	01297 639758	Table Tennis - Jenny Nickolls	01297 639758
Country Dancing - Gill Perkins - Marie Thorne	01297 32888 01297 631194	Kilminster Pre-School - Now part of primary school	01297 32762	Telephone Box Library - Karen Hodder	01297 35162
Cricket - David Lavender	01297 631868	Kilminster Primary School	01297 32762	Tennis - Bev Bailey Sue Wells	07577 488656 07912 272102
Footpath co-ordinator - Tom Cook footpaths@kilminstervillage.com	07974 001197	Millers Farm Shop	01297 35290	Village Hall bookings - Louise Quincey	01297 32358
Hitchcock Pavilion bookings - Peter Huscroft	01297 32243	The New Inn	01297 33376	Village Hall 100+ Club - Jean Falconer	01297 33708
Kilminster A35 Pit Stop	01297 598060	The Old Inn	01297 639779	www.kilminstervillage.com - Luke & Maxine Lawson	07719 909532
Kilminster Cross Services	01297 631089	RBL - Jean Falconer - Sec Stafford Seward - Chairman	01297 33708 01297 33909		

### MEDICAL AND SUPPORT

Axminster Hospital	01297 630400	'Devon Doctors on call' (Out of hours GP service)	0845 6710270	Veterinary Surgery	01297 630500
St Thomas Court Surgery	01297 32126	Dentist Helpline	03330 063300		

### SERVICES AND FACILITIES

Refuse Collection	01395 571515	Axminster Library	01297 32693	Clerk to the Parish Council	07800 826657
Water - general - leaks	0344 346 2020 0800 230 0561	Mobile Library	01404 42818	E. Devon District Councillor - Iain Chubb	01297 35468
Electricity - emergency	0800 365 900	Ring & Ride	01404 46520	Devon County Council, Whimple and Blackdown, Iain Chubb	07932 459595
		Axminster Care Service	01297 35550		

**Police:** Crime stoppers - 0800 555111: Emergency - 999: General - 101

### CHURCHES

<b>St Giles' Church</b> Rev Julie Lomas	01297 35004	<b>Baptist Church Office</b> Pastor Mike Hudson	01297 631638	<b>Axminster Catholic Church</b> Parish Priest: Father Anthony Cockram	01297 32135
--	-------------	--	--------------	--	-------------

## ADVERTISING IN POSTSCRIPT

Postscript is published ten times each year and is delivered free of charge to every house in Kilminster. All advertising fees and donations to Postscript are used to meet the cost of printing. ALL advertisements which are set out, from any source, are chargeable as follows and must be paid for in advance.

	Black and white ads	Colour ads
Credit card (70 mm x 40 mm)	£ 5 or £22.50 for 5 months	
¼ page (90 wide x 136 mm high - Portrait)	£12 for one-off or £50 for 5 months	£15 for one-off or £75 for 5 months
½ page (184 x 136 or 90 x 276 mm)	£20 or £90 for 5 months	£30 for one-off
Full page (184 x 276 mm)	£30 or £130 for 5 months	£40 for one-off

If the advertisement could be sent as a jpeg it is a great help when sizing for publication.

**BACK COVER:** *Occasionally the back cover is available for a one-off colour page advertisement. Cost: £50*

*Additional fee of £1 if Postscript has to edit, size or set copy.*

**PAYMENT:** Cheques should be made payable to: Kilminster Postscript and posted to: **Mrs V. Larcombe, Brookside, The Street, Kilminster, EX13 7RJ.** BACS account name is **Kilminster Postscript**, sort code: **51.61.23**, account no: **18159400**

**COMING AND GOING FOR A SONG:** There is no charge for these entries for items valued up to £20 or less. However, donations are appreciated - these can be popped through Vicky Larcombe's door (please see directions on page 26).



KILMINGTON PLAYERS  
PRESENT

# Jack and the Beanstalk

**KILMINGTON VILLAGE HALL**

**FEBRUARY 2023**

**15TH, 16TH, 17TH & 18TH**

**AT 7:30PM**

**TICKETS ON SALE AT  
MILLERS FARM SHOP**

**FROM JAN 23RD - CASH ONLY.**

**ADULTS - £8 / UNDER 16 - £4**

**DIRECTED BY LOUISE QUINCEY**

**A PANTOMIME BY LIMELIGHT SCRIPTS  
WWW.LIMELIGHTSCRIPTS.CO.UK**