

KILMINGTON

POSTscript

Issue 263 April 2024

80p where sold



Editorial

'Hwaet ! we Gardena in geardagum' - no, not a local dialect in Kilmington, at least not lately, but the opening line of the epic Anglo- Saxon poem, 'Beowulf', telling of heroes and battles long ago in which Danish spearmen inflicted terrible damage on opposing armies. The wound caused by a gar had a distinctive shape, which lingers on in a Kilmington place-name. (See Alan's 'Gory Past'). The History Group, still relatively new, has awakened considerable interest in local history. Their repeat presentation of 'The Paupers' takes place this month and many people have also cooperated by lending documents to be scanned for an archive which is being created.

March is the month in which winter is not entirely over and spring has not entirely sprung. In this April Postscript we look back on warming winter activities like the Lent lunches, as well as the Big Breakfast, a great success for a worthy cause, celebrated in the centre pages and the cover. The Coffee Shop at St Giles' on Fridays offers a warm welcome to local residents and passing hikers. Early daffodils were assembled into posies for distribution at the Mothering Sunday service and the Messy Sparklers could play outside with tapioca frogspawn in green jelly. Diane has provided recipes for the early harvests of asparagus and rhubarb. We look ahead to the future harvests with Peter and Jane in their garden and read how best to achieve them. The next KGC talk is about 'All year round colour in the garden', so there will be great expectations later on as we wander round the village – no pressure!

The Parish Council has responsibility for making decisions on our behalf to benefit the village and to negotiate with other organisations and councils where necessary, but not without giving the public an opportunity to have their say. This time they have arranged for another defibrillator to be installed, for speedwatch teams to monitor traffic speeds and the Hitchcock Trust will hold a public meeting about the recreation ground. There is entertainment too. The New Inn offers live music in the early evening of Easter Sunday. The Community Cinema will present two acclaimed films this April and film-goers who attend the matinee of the first one have the option of a cream tea in the interval if they book it in advance.

Not everyone will be aware that several new ventures have started up in Kilmington, many, but not all of them in and around Miller's Farm Shop, and some of them are taking the opportunity to advertise in Postscript so that readers can be informed about what they are offering and, if possible, support them.

Janfryd

Front page photo: © M.Gardner Centre spread photos: © M.Gardner

About Postscript

Please email all contributions and adverts for Postscript to:
postscript@kilmingtonvillage.com

Alternatively, please give your item to any team member.

The closing date for submitting articles for the April issue is 15th March 2024 (12th for adverts).

Earlier submission is always encouraged to ease the burden on the volunteers!

All submissions will be acknowledged. Please email, or ring 01297 639115 if not acknowledged within 48 hours.

Postscript Team

Editor

Janfryd Gordon-Kerr 01297 639115

Please contact the editor via
postscript@kilmingtonvillage.com

Team

Peter Ball

01297 32631

Marie Gardner

Gill Heighway

01297 33951

Please contact us via ***postscript@kilmingtonvillage.com***

Distribution

Diane Overton

01297 33569

Treasurer

Vicky Larcombe

01297 33858

Please contact us via ***postscript@kilmingtonvillage.com***

Postal address

The Granary, George Lane, Kilmington, EX13 7RT

Postscript is published 10 times each year and is delivered free of charge to every house in Kilmington. Almost all items in the magazine come from the village community who are very supportive of the magazine. The Postscript team are all volunteers and your donations, together with fees from advertisers, are used to pay for the cost of printing.

Postscript is printed by Axminster Printing 01297 32266

Advertising Payments, Rates, & Monetary Donations

Please see inside back cover for details about donating to Postscript, **advertising rates**, and how to pay for advertising. All donations go towards printing costs.

Thank you for your continuing support.

The average production cost per 28-page copy of Postscript with several colour pages is 80p. Extra copies are usually available from Millers Farm Shop.

Disclaimers: Items in this publication are the work of individuals and do not necessarily reflect the thoughts or opinions of the editorial team. The editorial team reserves the right to make small alterations to items submitted. Contributors are responsible for ensuring that parental permission has been obtained before pictures of children are submitted for publication, and that articles do not contain defamatory, libellous, or copyright/plagiarised material (text and/or images).

The content of advertisements is not the responsibility of the editorial team. All queries should be addressed to the advertiser.

This publication is online at www.kilmingtonvillage.com where there is also an archive of earlier issues.



Kilmington Parish Council

New Inn Defibrillator

You'll already be well aware that, following the speedy fundraising and purchase of the unit, agreeing the details of installation has taken us far longer than we ever expected. We have now agreed with Palmers Brewery that it will be fitted to a free-standing mount close to the front gate, on the right. This very visible location will provide some security as the unit will not be locked. Having created a drawing, we are very fortunate that Robert Crabbe volunteered to fabricate it. He has been busy in his 'man shed' and, as soon as it is complete, we'll install it.

Sounds like an excuse for a celebration to toast everyone's good health, so we never have to use it!



Kilmington Speedwatch

Our small group of volunteers have been out streetside around the village monitoring the speed of passing vehicles. Funnily enough, it seems that just the presence of a few people in bright fluorescent jackets has the effect of slowing down approaching vehicles. When we're seen the rising speed indicator suddenly drops. Which does suggest we're making drivers more aware of the speed limit. As the weather improves we will be increasing the frequency of checks.

Kilmington Recreation Ground

The trustees of The Hitchcock Trust, who are responsible for the Kilmington Recreation Ground, are holding an open meeting for residents. The charity trustees will explain how they manage and maintain the ground on behalf of the village.

Parish councillors, who manage the Children's Playpark, will also be present.

There will be an opportunity for discussion and questions.

All Kilmington residents are welcome at 7:00pm in the Village Hall on Monday 22nd April.

Tea and coffee will be served.

Kilmington Recreation Ground

Presentation & Discussion

The trustees of The Hitchcock Trust invite Kilmington residents to an open meeting on

7pm, Monday 22nd April

The charity trustees will explain how, on behalf of the village, they manage and maintain the Kilmington Recreation Ground for residents. Parish councillors, who manage the Childrens Playpark will also be present.

There will be an opportunity for discussion and questions.

All Kilmington Residents are Welcome

The Village Hall

Tea & Coffee served

Kilmington Tennis Club

Kilmington Tennis Club welcomes new members who can book and play at a very reasonable annual cost, membership fees can be found below. The court is on the far side of the cricket field with a small hut in case you need to shelter. *The all-weather surface allows us to play all year round.*

All court bookings are now online. via www.playtomic.io Members will not be asked to pay. Non-members will be asked to pay £6 per hour.

Current Annual Membership Fees:
Adults £52, Family £70 (2 adults and their children)
Please contact **Jane Chalk** on **07866 040310** or **Chris Eastwood** on **07772 930411**.



Upcoming Events

Village Hall '100+' Club

The Winners of the Draw held on 27th February 2024

No.		
123	Mr. N. Cromey-Hawke	£30
105	Mrs. G. Squire	£15
21	Mr. R. Lane	£15
159	Mrs. S. Plant	£5
93	Table Tennis Club	£5
35	Dr. S. Hodges	£5

For Further Details Please Contact
Jean Falconer – 01297 33708



Gardening Club Talk

The talk this month is 'All year round colour in the garden' by Alan Down.

Alan has had a career in horticulture and owned Cleeve nursery for 35 years, so he can offer us some good advice on how to keep our gardens looking good whatever the time of year.

All welcome to the village hall on
Friday 12th April at 7.30pm.
Non-members £3, bar, tea, and coffee.



Kilmington Gardening Club

Save the date Summer Holiday Club 2024

The Baptist Church Kilmington & friends will be hosting their annual Summer Holiday Club for those currently in Reception to Year 6 from Monday 5th to Friday 9th August.

Bible stories, songs, games, snacks & crafts will be engaging children throughout the week. *More details, including how to book, will be released a bit nearer the time.*

Bells on Sunday

The bells ring on Sundays prior to a service, usually in the morning. However, don't be surprised if you hear St Giles' Church bells ringing again on April 28th between 5 and 6pm. A team from Combeinteignhead will be visiting to practise for a competition in May. We wish them luck.

Please therefore do not come to church expecting a service!

Celia Dunsford

Our Local Expert

A Message from the 'Our local Expert' organisation.

We are now compiling the new local guide and welcome recommendations of local tradespeople you use and trust. Local businesses want to feature in the guide because it brings them local customers. It will be distributed in April free through your letterbox with your post.

When you recommend a business you could win £75 to spend at Kings Garden Centre (*Either Sidmouth or Exmouth*) in our reader competition. When you use businesses in Our Local Expert it supports the local economy – keeping money with local people rather than being lost to big companies.

Anyone who doesn't have a copy can contact me and I will be happy to post you one! Call **Nick Hall 01395 209911**, nick@OurLocalExpert.co.uk. People who prefer to use the internet will find the guide at www.OurLocalExpert.co.uk

Five Alive Oil Syndicate

The April order deadline falls at 12 noon on Tuesday 23 April 2024.



Please submit either a request for a specific amount, or if requesting a top up, a full tank, then please furnish me with an accurate estimate (100 litres) of the quantity that you require.

- **A minimum order of 500 litres applies in all cases.**

Colin Stewart

01297 792538

Cogstewartcs@gmail.com

Cogstewart@aol.com

LIVE MUSIC FROM THE RELICS

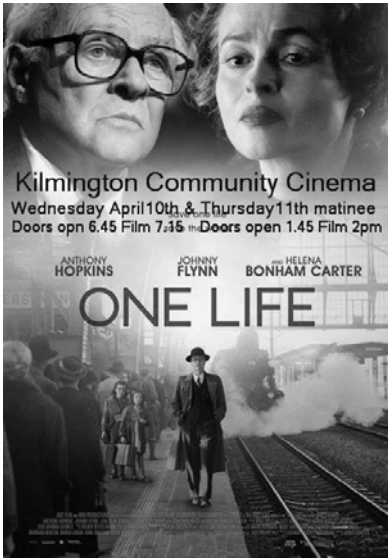
31 MARCH SUNDAY
The New Inn
Kilmington

Enjoy an afternoon of Live
music from The Relics.
Playing 5 - 7pm



Upcoming Events

Kilmington Community Cinema



One Life

Wednesday April 10th & Thursday 11th Matinee

Kilmington Village Hall



One Life tells the true story of Sir Nicholas ‘Nicky’ Winton, a young London broker played by Hopkins, who, in the months leading up to World War II, rescued 669 children from the Nazis. Nicky visited Prague in December 1938 and found families, who had fled the rise of the Nazis in Germany and Austria, living in desperate conditions with little or no shelter and food, and under threat of Nazi invasion. He immediately realised it was a race against time.

Wednesday: Doors and Bar open 6.45 with the evening’s entertainment starting at 7.15 and ending about 9.30. The Thursday matinee: Doors open 1.45, Film starts 2pm. Come along and enjoy a film and have wine/soft drinks, ice-creams/tea/coffee. Cream Teas available during the matinee interval. Please state Wednesday or Thursday when booking and order your cream tea at the same time. Tickets Pre-booked £5 or £5.50 on door, booking essential for the matinee.



Oppenheimer

Saturday 27th April - Kilmington Village Hall



Oppenheimer Based on the 2005 biography, ‘American Prometheus’, Christopher Nolan’s eagerly awaited feature is the story of J. Robert Oppenheimer, “the father of the atomic bomb”, an enigmatic man who must risk destroying the world in order to save it. The combination of Christopher Nolan, a fantastic cast and a riveting story, it is “Arguably Nolan’s most impressive work yet in the way it combines his acknowledged visual mastery with one of the deepest character dives in recent American cinema (Los Angeles Times).“It’s a character study on the grandest scale, with a sublime central performance by Cillian Murphy”.

Saturday: Doors and Bar open at 6pm with the Film at 6.30pm. We will have two short intermissions for this 3hr film. To book - as above.

Two excellent OSCAR nominated films, book early to avoid disappointment.

To book contact John 01297 639758 or email: wattsjohn307@gmail.com.



Films Available For Hire

If you were unable to come and see our films on the big screen, we can now offer you the opportunity to enjoy first-rate films in your own home. For a small hire cost of £3 for up-to 7 day loan, we have the listed films on offer. Each month, following our film show, that DVD will become available for hire. We will not be publishing an updated list each month, so look out for the posters to see what the KCC is showing.

To book the film and arrange to collect, contact: Eileen and John Birch, by phone: 01297 34595 or email: johnbirch598@btinternet.com
Collect from: Hill View, Wellmead, Kilmington (opposite the New Inn).



Please Note: The Blu-ray discs require a player that can accept Blu-ray discs; these will not play on a standard DVD player. Newer equipment under 3 years old will probably be Blu-ray compatible, but check for compatibility first.

	
West Side Story	The Courier
The House of Gucci	Little Women
Downton Abbey A New Era	No Time To Die
The Good Liar	Belfast
ELVIS	The Duke
Operaton Mincemeat	
The Railway Children Return	
Fisherman’s Friends One and All	
Mrs Harris Goes To Paris	
Living	
A Man Called Otto	
Empire of Light	
Allelujah	
What’s Love Got to Do With It?	
Phantom of the Open	
LION	
And Then Come The Nightjars	

Upcoming Events

The Kilmington Sky at Night

In early April **Jupiter** can be seen in the western sky at dusk, setting before midnight. As the month's sunsets progress it is lower in the sky and by month end is just on the horizon. For all but the last couple of April days **Mars** is below our night horizon and can't be seen. It peeps up above the horizon at the very end of the month, in the east at dawn. Throughout the month, **Saturn** is also on our eastern dawn horizon, getting a little higher every day. You'll have a greater chance to see it with a low clear horizon.

1st Sunrise 06.49. Sunset 19.47

10th Jupiter and the moon appear close together above the western horizon, as dusk fades to darkness.

11th The Pleiades (Seven Sisters, M45) and the moon appear close together, above the western horizon, as dusk fades to darkness. This open star cluster is one of the nearest to earth and can be easily seen with the naked eye.

22nd / 23rd Lyrid meteors usually fall in the few hours before dawn but aren't predictable. The shower runs annually from April 16-25 and peaks evening of 22nd/ morning of 23rd. Lyrid is an average shower, usually producing about 20 meteors per hour at its peak. Unfortunately, the glare of the full moon will block out all but the brightest meteors this year. Best viewing will be from a dark location after midnight.

23rd Full Moon, known by early Native American tribes as the Pink Moon because it marked the appearance of one of the first spring flowers, the moss pink wild ground phlox. Also known as the Sprouting Grass Moon, the Growing Moon, and the Egg Moon.

30th Sunrise 05.49. Sunset 20.34

Peter Ball

Rev. Julie Lomas
St Giles' Church
Kilmington
01297 35004 or 07488 278483
revjulielomas@gmail.com

Letter from the Churches



Pastor: Mike Hudson
KBC Church Office
Kilmington
01297 631638 or 07957 738211
pastor@baptistchurchkilmington.org

Why Easter?

Hello everyone – it seems only a few weeks ago that we were all gathering in our homes and our churches to celebrate Christmas. And now here we are celebrating the equally important and significant festival of Easter. I hope all our readers will enjoy a special time with families and loved ones over the Easter holiday.

If you turn to your computer and type in the words “Why Easter?” there are numerous pages that instantly pop up. My favourite one is <https://www.whyehaster.com/customs/about-easter> as it gives a whole range of information about customs and traditions, as well as a brilliant retelling of the story of Jesus, who, we discover, is no longer the baby in the manger, but a grown man, who has amazed his followers and annoyed his opponents, with his teaching, his actions, his welcome of the outsiders, and the signs and wonders that accompanied him wherever he travelled. The story is split across a week, from the triumph of a party parade on Palm Sunday, to the misery, pain and suffering of Good Friday, the silence and waiting of Holy Saturday, to the joy and amazement of the resurrection on Easter Sunday.

This year, as every year, we gather in our Parish Church and our Baptist Church to remember these life changing events through telling the story once again, and reflecting on how the events of 2000 years ago can have such meaning and resonate with us today. Jesus said he would transform death and restore all peoples to a living and life-giving relationship with God, his Father, by dying and being raised back to life.

At the time, no one understood him, or believed him, but since that first Easter Sunday many people have taken Jesus at his word, and have believed in the eye witness accounts of those who met the risen Jesus, ate food with him, shared conversations and even touched his risen body.

So this year, why Easter? I invite you to look at the website, www.whyehaster.com, or better still to come to one or all of the services in our village churches, and be prepared to be surprised and challenged by this amazing story of life and death, hope and resurrection, and above all, God's love which reaches out to all of us even now.

Happy Easter everyone!

Rev'd Julie Lomas

eyecatching

DRESSMAKING AND DESIGN

in Kilmington Village

Discuss your requirement with Rosemary
Tel. 01297 639270



BEAUTY
BY BEE

NEW TO THE VILLAGE!

Professional, discreet & fully qualified beautician offering a range of treatments.

Including lash extensions, waxing, manicures, pedicures & more!

Call Bev Reed on 07971782806 in the first instance for consultation & appointments. Patch test required 48hrs in advance for most treatments. Gift vouchers available.



**BEAUTY BY BEE
BEV REED - 07971782806**

*The New Inn
Kilminster*

EX13 7SF

**Fine Real Ales
Home Cooked Food**
thenewinnkilminster@gmail.com
01297 33376



**Are you worried about your
Tax Returns?**

We provide a friendly, professional service for self assessment returns, business accounts and all aspects of taxation based on experience, qualifications and confidentiality.

HOME VISITS AVAILABLE

For an initial free meeting please telephone our office and ask to speak to Hayley Perham (Taxation Director) or email: crwaccountants@btconnect.com

Telephone 01297 553286

The Personal, Professional approach to Taxation, providing "Peace of Mind"

CRW Accountants Ltd
The Mews, Queen Street, Colyton, Devon
EX24 6JU
www.crwaccountants.co.uk

AXMINSTER PRINTING CO LTD

TEL: 01297 32266

Not just a Printing Company... Established in 1969



Printing & Design Services

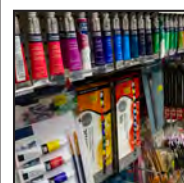
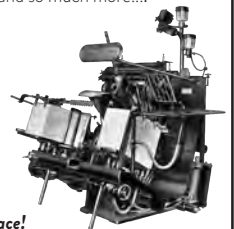
Leaflets, Posters, Booklets, Books, Labels, Tags, Menus, Banners, Magazines, Canvases, Order of Services, Headings, Business Cards, Appointment Cards, Compliment Slips, Headed Cards, Bookmarks, Invoice and Order Forms, Delivery Forms, Folders, Vouchers, Loyalty Cards, Wedding and Business Stationery, Plans, Prints (any Size up to A0) and so much more...



Stationers

- Student Essentials
- Computer Inks & Toners
- Business Machines
- Packaging Supplies
- Filing Products
- Office Stationery

All your stationery needs in one place!



Art & Craft Supplies

- Art supplies for the student or hobbyist
- Card making materials
- Lots of craft products and activity sets for children



Website: www.axminsterprinting.co.uk Email: sales@axminsterprinting.co.uk
Address: Axminster Printing Co. Ltd. West Street, Axminster, Devon EX13 5NU

Peter and Jane in the Garden



I jolly well hope the rain has stopped! There's a lot to do in April.

As Primroses start going over, I lift any very large clumps and divide them into small groups for replanting elsewhere.

Forsythia bushes finish flowering, so it's time to prune. On mature bushes, I cut the lower branches right down and take out any congested growth

or branches sticking out too far. On younger bushes, I just remove this year's flowering stems, to keep the shape. Pruning now ensures new growth which produces flowers next year. Later pruning would undo all of this.

In April, I start hardening off plants overwintered in the greenhouse or seedlings sown recently. They go outside on warmer days and I take them in only when a cold snap is forecast.

Weeding is a good thing to do whilst the ground is still soft. Perennial weeds like dandelion and dock are difficult to dig out when the soil is dry and hard.

My tomato seedlings will need pricking out into pots and cucumbers will be sown in the greenhouse. It's important, on hot days, to open the vents or doors. Temperatures can get high even now.

Daffodils are over and deadheading important. Don't be tempted to cut the leaves down. As they die back, they nourish the bulbs for next year, so even if yellowing leaves are unsightly, it's worth waiting!

By now, it should be evident as to whether or not the wild flower seed sown last year along the front wall will have germinated and survived amongst the weeds. Let's hope for another colourful display.

February was the wettest I can remember and will probably be labelled the wettest on record. Consequently, nothing got done in the kitchen garden and although I am trying to be patient, I am frustrated! I therefore have planted my broad beans and onion sets in small pots, something I have never done before, always having put them straight into the ground. I'm sure they will be just fine.

I also like to get my parsnip seed into the ground early but certainly not this year. Parsnip seed does not remain viable for long, so it is always best to buy new seed every year. Parsnip seeds will not germinate below 7 degrees and ideally need 11-12 degrees. I know it has been relatively warm this year but the soil is just too wet and cold. Maybe they will be in the ground by the time you read this?

I have sown my leek seeds in a bed under glass. I paid £2.49 for a pack of Suttons seeds, variety Lancelot, with an average of 65 seeds per packet. As I want to grow 100 leeks, I obviously have to buy two packets. I also bought a packet of Thompson and Morgan F1 Cryptus Brussels sprout seed and paid £4.99 for them (average contents 8 seeds and germination will be 95% at best). Is that taking the Micky or what? I must be mad? Seed is really getting too expensive. I can't afford failure. Good job I get pleasure out of growing vegetables! Happy days.

Jane Chalk and Peter Guy

Sudoku Challenge

To solve this puzzle, each 3 x 3 square, row and column must contain all of the numbers 1 to 9.

Solution on page 23

Difficulty: Easy

	2						9	8
	9		8		2			
		5			3	6		
							4	
			7		4		2	
6		7	1					3
				7	8	1		
			3					
3			6		1	5	8	

Difficulty: Hard

		2	7	3		1		
				9	5			
	4	7			2			
	7	3			1		6	2
		4	9			3		
					7	5	1	
1		5				7		
			4			2		

Vicary & Co
Estate Agents & Valuers
Residential - Commercial - Rural

**Thinking of selling?
Call us today to arrange a
FREE market appraisal of
your home.**

Vicary & Co Estate Agents & Valuers
5 South Street | Axminster | Devon | EX13 5AD
01297 33449 | sales@vicaryandco.com | vicaryandco.com

Sales Manager Kelsey Lawrence
Ian Vicary MRICS FISVA MARLA FAAV Pg Dip (Arch Cons) - Chartered Surveyor & RICS Reg. Valuer

Scott Rowe
Solicitors

BIG ENOUGH TO HELP | SMALL ENOUGH TO CARE

- Buying & Selling Property
- Business Issues
- Agricultural Issues
- Wills
- Powers of Attorney
- Trusts & Estates
- Matrimonial & Family
- Personal Injury
- Resolving Disputes
- Negligence Claims
- Employment
- Debt Recovery

Axminster 01297 32345	Chard 01460 63336	Lyme Regis 01297 443777
--------------------------	----------------------	----------------------------

www.scottrowe.co.uk

Consistent quality care at every visit

Your Care | Your Choice | Your Hub

Tell us the support you're looking for → Review the profiles we send you

Choose who you feel is the best for you ←

01392 982 832
exeter@hubcaresupport.co.uk

TRUSTED LOCAL FAMILY FUNERAL DIRECTORS & MONUMENTAL MASONS

W. G. POTTER
WEST STREET, AXMINSTER
01297 34283

Julian & Karen Hussey DipFD NAFD
Jasmine & George Hussey DipFD NAFD

- Offices also at Seaton, Bridport, Honiton & Ottery St. Mary
- Pre-arranged & prepaid funeral plans

www.funeraldirectors.uk.com



Headlines: First Friday Get together Membership · Spring Coffee Morning

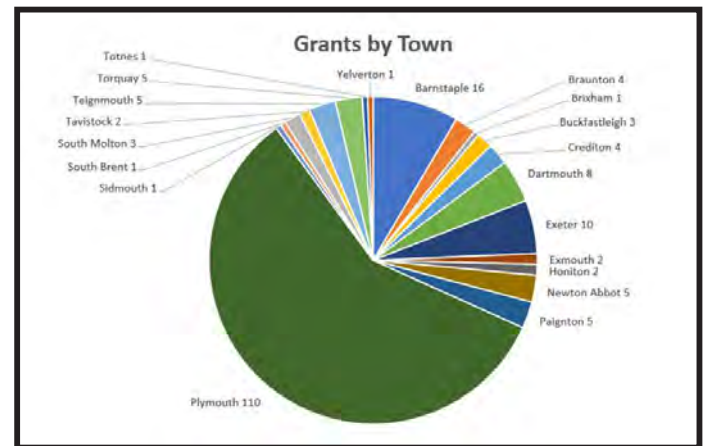
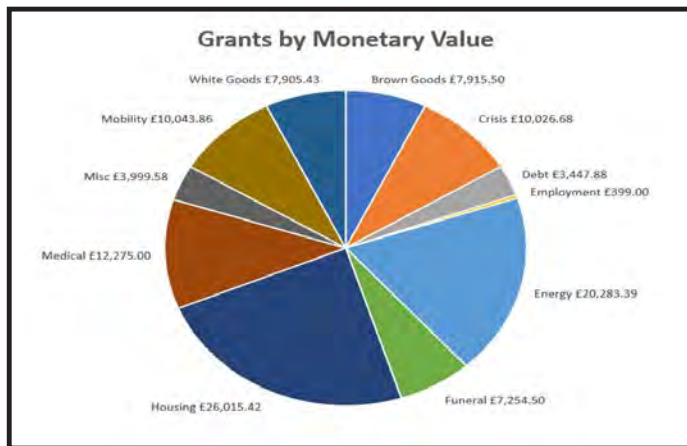
We hope this finds you all well, looking forward to spring and saying goodbye to the wellies!! Our next event will be our informal get together at 6pm on Friday, 5th April at the New Inn. These evenings are not exclusive and everyone is invited to join us for a good ‘chin wag’, aperitif and if you so wish, a Friday evening meal (if you wish to eat, we would recommend booking early). These evenings are a great way to meet people and also understand how diverse and friendly our branch is. Of course, if you should wish to become a member, we would be thrilled and there will always be someone at hand to help you. Most importantly, you **DO NOT** have to be a Veteran or related to anyone serving in the armed Forces to join!

As a member we will do our utmost to keep you up to date with what is happening, both locally and nationally. Most reports will be related to current and historic events, such as the 80th Anniversary of D-Day on 6th June (more to come with what Kilmingtong is planning) and of course, where the money that you work so hard to raise is spent. In this edition we have included two ‘pie charts’ that highlight where and how much was spent in Devon in the last quarter of 2023. Clarity is important, likewise, it is good to know that we are

helping people close to home. If you have any questions, please do not hesitate to call or email me.

In our previous report I highlighted my deliberate mistake regarding the date of our Spring Coffee Morning. Once again, just to clarify, our Spring Coffee morning will take place on Saturday, 6th April, between 10 am and 12 am; just as the poster on the back cover states! Please join us for refreshments and an opportunity to buy lots of goodies including cakes, plants, and much more. Look out for the posters!

Finally, as always, we are seeking more members to join us; so even if you can’t make one of our events, if you are interested, please contact Peter Squire, our membership secretary (peterhsquire@outlook.com), who will help you through the joining process. Just to repeat, **‘YOU DO NOT NEED TO BE A VETERAN, HAVE SERVED IN THE ARMED FORCES or BE RELATED TO ANYONE IN THE ARMED FORCES’** to become a member of the Royal British Legion. By joining you could be helping a friend or someone remarkably close to you who is too proud to ask for help!



Here are the provisional dates for your diaries:

- Spring Coffee Morning – Saturday, 6th April
- 80th Anniversary of D Day – Thursday, 6th June
- RBL family BBQ – Friday, 16th August
- AGM – Friday, 4th October
- Remembrance Sunday – Sunday, 10th November
- Armistice Day – Monday, 11th November
- Christmas Coffee Morning – Saturday, 14th December

In the meantime, we look forward to seeing you all and thank you again for supporting the Royal British Legion. Please take great care and stay safe.

Cdr (Rtd) Staff Seward OBE RN Chairman RBL Kilmingtong Branch 07799 612557 e-mail: t60sas@hotmail.co.uk



Messy Sparklers



Our clearing-up team were especially grateful for fine weather at the March Messy Sparklers. When we started setting up on Monday evening, the weather had been horrendous, but by Tuesday we even saw some sunshine. That was just as well, because one of our activities, representing ‘new life’ through Jesus, was a jelly lily pond with frogs, complete with tapioca frogspawn. (Our clearing-up team have requested that jelly doesn’t become a regular activity!)

The theme that we based this month on was the Christian Easter story. The children painted footprint donkeys, coloured an Easter picture and played with a Palm Sunday happyland scene. Our dark den was out, representing the darkness that the followers of Jesus felt after his death and the tomb that 3 days later was empty because Jesus had risen.

Other activities included chocolate scented playdough, handprint Mother’s Day cards, water play and ride-on toys outside, in addition to the usual toys & books.

We do not have a Messy Sparklers in April due to the Easter Holidays. Hopefully, lots of you will have been able to make the Easter Trail, between the two churches, that will have taken place on Saturday 30th March. Our next session is not until **Tuesday 7th May**. We start at 10.30am and finish at 12.30pm, we ask for a donation of £2 for the first child plus £1 for each additional child which includes lunch for both the child & their adult. Booking is essential, if you aren’t on our mailing list, please contact children.youth@baptistchurchkilmington.org to receive a booking email. Remember to dress for mess!



Juletta Obudo



JOHN PARRY

TREE SURGERY & FENCING



Professional tree surgery services including aerial tree works, reductions, pruning, felling and forestry.

Domestic fencing services. Installation and repair of traditional and contemporary fencing styles.

**NPTC qualified and fully insured,
with over 20 years experience**

07903 124808

john@parrytrees.co.uk



Home Entertainment as Never Before?

For most of us, television represents our prime entertainment. After John Logie Baird demonstrated the first television on 10th August 1928, we have been able to enjoy films, sport, and classic dramas at home. The flickering twelve inch black and white screen, tucked away inconspicuously in the corner, has evolved into dedicated home cinema rooms with huge high-definition colour screens and Hi-Fi surround sound. As picture and sound quality have improved, your enjoyment has been enhanced. Your brain processes and interprets what you see and hear, creating the illusion you're right in the middle of the on-screen action.

However, scientific research has demonstrated that our sense of smell arouses far stronger emotions and memories than either sight or sound. At the World Imagineering Institute, Professor Rich A Roma explained "The regions of the brain linked to memory, emotion and our sense of smell are physically closer. Many of us will have experienced how a memorable perfume or aftershave can produce strong emotional reactions".

In the past, movie theatres have tried out systems that pipe scents in through ceiling vents. And for many years engineers have been chasing the dream to add a fragrance delivery system to television.

The Japanese Electronics giant, Itreeki, has done just that and launched the next television revolution. At their Press Launch last month, journalists watched a television cooking programme and when the chef took his piping hot dish out of the oven, a delicious aroma filled the room. Smelivision had arrived. The media then got a TV tour of the Tokyo Palace Cherry Tree Festival together with the sweet fragrance of the cherry blossom.

Itreeki CEO, Hir Ohda, excitedly told his audience, "Homes around the world can now look forward to thrilling car chases with the smell of burning tyre rubber and Olympic swimming races in the atmospheric ambience of chlorine".

The Itreeki UK launch is on the first of this month. Journalists will be treated to the BBC Countryfile programme as Adam cleans out his Gloucestershire Old Spots, providing a proper visit to the countryside. This will be followed by a demonstration of how Smelivision can enhance sports with the Six Nations Rugby. The camera will get in tight on the Wales v England steamy, sweaty scrum.

Perhaps Saturday night viewing at home will never be the same again, who nose?



Television viewing has evolved into dedicated home cinema rooms with huge high-definition colour screens and Hi-Fi surround sound.

Cookery Corner

The recipes this month both use seasonal produce; the salmon dish includes asparagus, new potatoes and tenderstem broccoli, and the pudding uses rhubarb. Both are suitable as mid-week lunches or suppers, and the salmon dish is especially good because the whole meal is cooked in one dish.

Diane Overton - Diane.overton@outlook.com

Salmon, Asparagus and Broccoli traybake

Serves 2

- 2 salmon fillets
- 350g/14oz baby new potatoes, finely sliced
- 2-3 tbsp olive oil
- 75g/3oz asparagus, cut in half horizontally
- 50g/2oz tenderstem broccoli, trimmed
- 50g/2oz half fat crème fraiche
- 2 tsp Dijon mustard
- 2 tsp chopped fresh dill
- Zest of 1 lemon
- 3 tbsp panko breadcrumbs
- Salt and pepper

Method

1. Place the finely sliced potatoes into a baking dish, one layer deep, and drizzle with 2 tbsp of the olive oil. Bake in a preheated oven, 180C fan, for approximately 25 mins until the potatoes are soft and slightly golden in colour.
2. In a bowl mix together the crème fraiche, mustard, dill and the lemon zest. Set aside.
3. After the potatoes have had 25 mins in the oven, remove the dish and lay the salmon fillets on top of the potato slices, top with the crème fraiche mixture followed by the breadcrumbs. Place the asparagus and broccoli around the fish, drizzle over the remaining olive oil and season with salt and pepper.
4. Return to the oven and bake for 20 mins until the fish is cooked through. Serve with lemon wedges, optional.



Rhubarb and Brioche pudding

Serves 6

- 350g/14oz rhubarb, cut into 1 -2 cm chunks
- 1 heaped tsp ground ginger
- ½ tsp ground cinnamon
- 25g/1oz unsalted butter
- 75g/3oz muscovado sugar
- Grated zest from 1 orange plus the juice from ½ an orange
- 300g/12oz ready sliced brioche
- 50g/unsalted butter, softened
- 400ml/16 fl oz whole milk
- 3 tbsp double cream
- 4 medium eggs
- 50g/2oz caster sugar
- 1 tsp vanilla essence
- 2 tbsp demerara sugar
- Icing sugar - optional

Method

1. Put the rhubarb, ginger, cinnamon, muscovado sugar, orange zest and juice into a baking dish or roasting tin, mix well. Bake at 180C for 20 mins and then allow to cool. If not all the juice has been absorbed, using a slotted spoon, remove the rhubarb, leaving most of the juice behind, as you don't want the fruit to be too wet.
2. Spread the brioche slices with butter and cut each slice in half.
3. Grease a large, deep sided baking dish with butter. Layer the brioche slices in the dish and top with two thirds of the rhubarb mixture.
4. In a jug, mix together the eggs, milk, cream, caster sugar and vanilla essence. Pour 2/3rds of the egg mixture over the brioche and rhubarb. Allow to stand for about an hour.
5. Just before baking, pour the rest of the egg mixture into the dish and spoon the remaining rhubarb on top of the pudding. Sprinkle with the demerara sugar.
6. Bake at 180c fan for approx. 45 mins until the custard is set and the edges of the brioche are golden brown.
7. Serve dusted with icing sugar accompanied by custard, pouring cream or ice cream.



Kilmington Big Breakfast in aid of Cancer Research UK



A massive thank you to all villagers, family and friends who supported our 2024 Big Breakfast held on 9th March. A very busy morning and a great atmosphere filled the hall. Whether you were buying cakes, having a go on the Tombola or just enjoying a chat over coffee and cake, it was great to see so many people.

I would like to thank all our Big Breakfast team for joining in, helping and supporting, so the morning ran smoothly. We all really enjoyed the morning, and, alongside, raising money for a great charity, Cancer Research UK. We raised £2612, a fantastic amount. Also, thank you to everyone who donated prizes and cakes.

Looking forward to 2025 Big Breakfast. See you all then!

Many thanks. Alison Dare.



Volunteer at Loughwood

Help us to look after this special place and keep it open to visitors.

Are you Passionate about historic buildings, reliable and have good attention to detail?

We are looking for volunteer caretakers for Loughwood Meeting House, near Kilmington.



Become a volunteer caretaker, learn more about the history of Loughwood Meeting House, make new friends and contribute towards the care and upkeep of a special place in your community.

What's involved

Volunteers need to be available to open and/or close Loughwood Chapel at least one morning or afternoon per week and have their own transport.

Liaise with the ranger team to keep them informed of your availability for a weekly caretaking rota.

Help take care of the building, including doing a visual check, sweeping & dusting to ensure that the building is left tidy and reporting any issues.

An introduction to Loughwood

Loughwood Meeting House is a very special place of worship that has remained virtually unchanged since the 18th century. Founded in secret during a time of great persecution towards non-conformists, Loughwood Meeting House is one of the earliest surviving Baptist meeting houses in Britain. It is a beautiful, thatched chapel that is set into the hillside overlooking the rolling east Devon countryside with views of the Axe Valley.

Please help National Trust keep this special place open to visitors.

Volunteer information morning

Ready to get involved, or would like more information? Please come along to an open morning at Loughwood Meeting House, near Kilmington, EX13 7DU on Tuesday 16th April at 11am – 12.30pm to find out more about volunteering as a caretaker at Loughwood.

Alternatively, contact loughwood@nationaltrust.org.uk, or call 01297 680507 for an informal chat.

For other details, visit www.nationaltrust.org.uk/volunteering
www.nationaltrust.org.uk/loughwood



MOPSY MOPS

CLEANING & DOMESTIC SERVICES
SMALL JOBS TO
SPRINGCLEANS.

MATURE FEMALE CLEANER
CALL SADIE
0129734367
MOBILE 07779703388



MNR MOWERS LTD

Unit 8 Devonshire Court
Heathpark Industrial Estate
Honiton, Devon EX14 1SB

SALES SERVICE SPARES
Collection & Delivery in East Devon
For all types of Garden machinery
Tel 01404 548300 Fax 01404 548301
MNRMOWERSLTD@UNIT8.ECLIPSE.CO.UK

Kilmington History Group

A Gory Past?

The Origins of a Kilmington Place Name

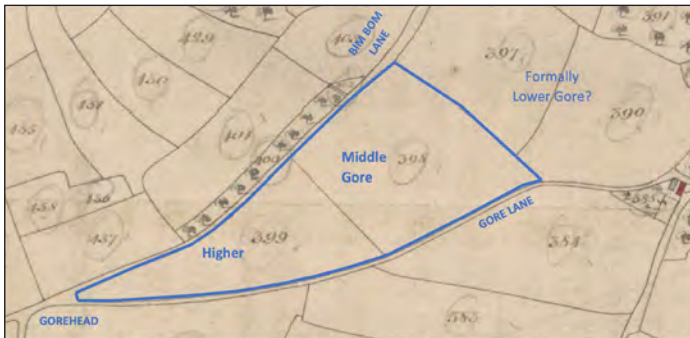
How many residents will have walked up the lane and hill from Jubilee Green, leaving the village behind them, perhaps on their way to Shute or just out for a pleasant countryside walk and wondered at the origins of 'Gore Lane'? Perhaps the name conjures an image of a grisly or bloody site, or maybe the historical home of some notorious bull with a reputation for goring trespassers with sharp horns? I hope to be able to provide a likely answer to the gory conundrum accompanied with a little bit of local history.

Firstly, I am recently and reliably informed by those who have lived in Kilmington for far longer, that this lane is also colloquially referred to as 'up over Knapp', a turn of phrase perhaps more agreeable than 'Gore'. I therefore take advantage of an opportunity to pass on this knowledge so that the expression doesn't become entirely lost to newer generations of residents. This expression must presumably have the same origins, or have taken its namesake, from the Knapp Cottages which stand at the foot of the hill.

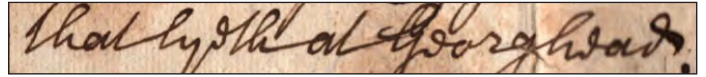
Gorehead

Gore Lane intersects Bim Bom Lane at 'Gorehead', where Fernwood Farm now sits. Those lanes enclose two fields which were recorded on the 1840 tithe map as 'Middle Gore' and 'Higher Gore', as shown below. Presumably, at one time, the other enclosed fields were once known as 'Lower Gore'?

The two fields (and Gorehead and Gore Lane) are most likely named after the Anglo-Saxon word *gar* meaning 'spear shaped' because of their triangular shape. This would also explain the origins of the word 'gored' by the fictitious and dangerous Kilmington bull above. Dressmakers will also know that a 'gore' is a triangular insert of fabric into a dress often used in skirts, gussets or flared medieval sleeves; it has the same origin. If correct, this suggests that those Kilmington lanes, field boundaries and names may have existed since before the Norman Conquest.



Historical records tell us that the name 'Gorehead' (the tip of the spear) certainly existed in Kilmington at least as early the turn of the eighteenth century, more than three hundred and twenty years ago, and probably much longer. We have sight of several delicate and beautifully handwritten documents of the time which tell us of a field '...that lyeth at Georghead'.



Moon's Goare?

We also know that Thomas Southcott Esquire, a member of an important Kilmington landowning family once locally seated at Dulcis, gave his son, amongst other properties, the lease of 'Moons Goare' when he died in 1715, just after King George I came to the throne.

The English Place-Name Society states that 'Moons Goare' probably relates to the same land at Gore Lane in Kilmington and that it may relate to the de Mohun family (pronounced 'Moon'). Circumstantially this doesn't seem unreasonable. The de Mohun family came over with William the Conqueror from Normandy in 1066 and had an important medieval pedigree. As feudal barons, they founded Dunster Castle in Somerset and later, as lords of Axminster manor, Newenham Abbey which in 1246 they then gave to the Abbot, along with the manorial lands. Perhaps those lands adjacent to Gore Lane were once in the possession of the medieval de Mohuns? If so, the name surely has at least eight hundred years of history.

Gorehams

And perhaps Gore Lane isn't the only Anglo-Saxon allusion to a triangular parcel of land that we have in Kilmington.

There are entries in Kilmington's churchwarden's accounts that, 470 years ago, a place called 'Goram' or 'Gorham' existed in the parish which was then occupied by the 'Rugge' family. It seems likely - from the tithe map of 1840 - that this may have been later known as 'Gorehams', which was another distinctly triangular shaped parcel of land - situated between and bordered by the Rivers Axe and Yarty where they meet in Kilmington.

But, as ever, there will be more information to be discovered. If anyone can provide further insight into the origins of 'Gore Lane', 'up over Knapp' or 'Bim Bom Lane', or any other obscure or intriguing local name, both I and the Kilmington History Group would be delighted to hear.

Alan Clarkson



computer set up
graphic & web design
computer supplies
remote support

01297 816002
lawsoncomputers.co.uk
info@lawsoncomputers.co.uk



Axe Valley Motors 01297 34217

We pride ourselves in customer service and offer free collection and delivery or a loan car.



Our Services

- MOT's
- MOT repairs
- Menu price servicing
- Diagnostics with the latest tools
- General repairs
- Welding
- Small body repairs

Contact Alistair or Jenny to book or receive a quote.

GREEN MACHINES

Mobile Garden Machinery Repair

FORMERLY DAVID GEAR HORTICULTURAL

Oliver Newton

Service & Repair of all Garden Machinery

Call Oliver Today!

01297 23913



Chris Stubbs Electrical

Est 1981

OFFICE ADDRESS: UNIT 2,
THE ASSEMBLY ROOMS,
GUNDRY LANE, BRIDPORT,
DORSET, DT6 3RL

Bridport Office No. 01308 422726
Kilminster Home No. 01297 631244
Mobile No. 07836 247294
email: StubbsChris@hotmail.com

“For a friendly service
at a competitive price call us today”



Vintage Engineering

An engineering company with a difference. We cater for the one offs and bespoke items, in Metal (welding and fabrication) wood, and technical objects.

We restore Vintage/Classic cars and motor bikes, M.O.T welding, repair gates, stairs, individual items, make new objects in steel, stainless and aluminium and manufacture or repair wood and mechanical items.



Do you have those broken or damaged objects that you need repairing or replacing that will not cost the earth, and those home repairs or builds that no one seems interested in. We can give you a cost to do those things you just want sorting.

Call 07444 244 562

Whitchurch Canonorum

vintageengineering.co.uk

Strictly For The Birds

In my last piece about Crickets, I finished with the words ‘So not too different from humans’. I believe that is true about many species, but in particular about birds. I think they have many similarities:

1. Their beauty and grace
2. Their sense of fun
3. Their trainability
4. Their need to dance

The first point was clearly demonstrated when I asked my mother, if she was reborn, which creature she would most like to come back as. ‘A seabird’ she replied dreamily, ‘gliding silently over the ocean’. Lovely, I thought. I then gently asked her what she thought I would come back as. ‘A fish’ she replied. With a glint in her eye. You can go off people.

As for the second point: I was watching a rather lovely male Brimstone butterfly flying around the garden. I then noticed a male sparrow, sitting on the fence, who was watching it as well. He then turned his head towards me and gave me the closest to a grin a bird can give without moving his beak. I called out, ‘No-o-o - don’t you dare!’ But of course he did. One less for the butterfly count.

Ravens apparently do have a sense of fun. Whilst flying, they love to throw sticks in the air and catch them. They can also fly upside down. One has been recorded doing this for half a mile. Feet first I hope. It was thought to be a courtship ritual. But recent research believes they just do it for enjoyment - and probably to show off to smaller species of crows.

The third point is trainability. For this, I am using peregrines and pigeons as good examples. Their use in WWII unfortunately worked for both sides. Allied planes often carried homing pigeons. These were released if planes were shot down behind enemy lines. Disappointingly, when nearly home, they were eagerly killed and eaten by English Peregrines. One of the earliest instances of ‘Friendly Fire’.

The great potato competition

After the success of last year’s ‘grow a potato in a bag’ competition, we will be holding it again at this year’s village show on Saturday 7th September.

The kits cost £3 each and contain a growing bag (larger than last year), 2 potatoes and compost. They will be available at the gardening club talk on Friday April 12th or you can collect from outside the village hall on Sunday 14th between 1-3pm.

At the village show the bags will be emptied and their contents weighed, the adult and child with the heaviest crop will receive a prize.

Sadly, the Air Ministry had many of these quisling falcons destroyed. However, in response to the fact that Nazi pigeons were being released from E-Boats (fast attack craft) a top secret falcon squadron was recruited to patrol the skies above the Scilly Isles. Many enemy pigeons were killed - but it was later revealed, that only two were found to carry messages. Of the two live pigeons that were captured - an RAF commander dryly related – one was put to work ‘making British pigeons’ in an M.O.D pigeon loft.

My fourth point is ‘their need to dance’. Many male birds gather in something called a Lek, the Avian equivalent of a nightclub, where they dance in a group, performing individual moves and feats of strength to attract nearby females. However, females also dance. As a professionally qualified Examiner and Lecturer in dance (Modern Theatre Dance, Ballet etc.), I was fascinated by a female Wood Pigeon who daily danced along the long ridge of the previous garage. The simple dance consisted of: 2 walks forwards, jump, (twice through) - then a half turn to face the other way and preen under the wing. This was repeated a few times. Then she appeared to come to a decision. After a few seconds, she started to dance again, but this time she changed the routine to include a full turn, which allowed her to travel further along the ridge each time. Not exactly Gillian Lynne standard (she wouldn’t appreciate ‘Cats’). However, the new choreography, clearly thought through, quickly attracted the attention of a handsome male pigeon. I hope they are still dancing.

Jan Baker

Hedgehogs in Kilmington

After working with The Hedgehog Hut for 3 years I have now stopped being a carer due to family commitments.

Over these years I have looked after over 50 hedgehogs and returned them back into the wild, with many being released in Kilmington.

So, if you find a sick or injured hog, please take it straight to the vets or contact Alison at The Hedgehog Hut for advice on 07305129160.

Lesley Rew





Based in Kilmington & providing all aspects of **Repair, Refurbishment & Renovation.**

Including (but not limited to!):

- ✓ General Building Repair and Maintenance
- ✓ Bathroom and Kitchen Remodelling
- ✓ Interior and Exterior Decorating
- ✓ Regular Garden Maintenance
- ✓ Landscaping and Minor Construction
- ✓ Flat-pack Construction (no more frustration!)
- ✓ A lot more - just ask!

Call **Simon** on **07939 242 101** or email **simon@bpmaintenance.co.uk**
www.bpmaintenance.co.uk

"A friendly and efficient service, available in East Devon and West Dorset"

§Khushi Kitchen

Fancy a Homemade,
Authentic Curry?



Then why not try a **§Khushi** authentic curry experience

- Fresh Frozen Curries available all day, every day at The Old Barn
- Kilmington's Friday Takeaway
- Event Catering
- 1:1 Cooking class with Mina



Email: mina@khushi.kitchen
 Web: www.khushi.kitchen
 Address: [The Old Barn, The Street, Kilmington, EX13 7RJ](#)
 Facebook: [facebook.com/khushikitchen](https://www.facebook.com/khushikitchen)
 Classes: www.minascookeryschool.com

A.G.M.

Axminster Garden Machinery

SALES • SERVICE • SPARES
Independent Specialists



**FACTORY APPOINTED
AUTHORISED DEALERS
OF ALL POWER
EQUIPMENT WE SELL**



Proper Horticultural Engineering since 1979

Visit our
well stocked
showroom
now



Always
Great Deals
Available

Unit 1A Weycroft Avenue, Millwey Rise, Axminster, EX13 5HU
 Tel: 01297 631186
www.axminstergardenmachinery.co.uk

HUNTHAY FARM & BUSINESS PARK

www.hunthay.co.uk

Secure Containerised Self Storage

Suit Business or Domestic use

Caravan + Motorhome Storage

Industrial + Starter units

Easy, long day & weekend access

Owner lives on site

Close to A35

jenny@hunthay.co.uk

Phone: 01297 33839 / 07779 550771

Axminster and Lyme Cancer Support



www.axminsterandlymecancersupport.co.uk
www.facebook.com/axminsterandlymecancersupport.co.uk
New Telephone Number: 01297 816559
Email: info@axminsterandlymecancersupport.co.uk



New Mailing Address: Axminster and Lyme Cancer Support, Cross Keys House, Chard Road, Axminster, EX13 5EB

Newsletter no. 66

This month ALCS thanks the Waffle House for a fund-raising event and reminds readers of its own efforts in the form of a pop-up charity shop and an on-going 'Nook' at Cross Keys House, offering a selection of good quality reasonably priced items, where all profit goes to support local people affected by cancer. Anyone who has items they wish to donate for the April charity shop or the Nook is asked to bring them to Cross Keys House (go through the main gateway of Axminster hospital).

Some of the support they give takes the form of therapies and workshops to help with physical and mental well-being. A new, informative series about nutrition started in March

and features 'Supplements' on April 22, continuing mostly monthly thereafter at Cross Keys House and for those who prefer to stay at home it is possible to join a live Yoga class on zoom. The popular 'Making a Mark' creative art classes continue and Acrylic Art workshops start on April 18. ALCS also runs a ropework workshop at the Boat Building Academy in Lyme Regis.

Information about all these and more can be found on the website. If you would like to receive the full newsletter, with much fuller detail, or have any queries for ALCS, please use one of the addresses or the phone number above to contact them.



Is Your Food Peppered With Plastic?

Can't be bothered to cook from scratch, too weary, too busy to do so? Very understandable! 86% of adults in the UK eat ready meals and 3 in 10 eat ready meals at least once a week. The UK consumes 79 million ready meals every single day with an annual market value of nearly £4 billion. If you have surveyed the range of ready meals in the freezers or in the chiller cabinets in the supermarket, what strikes you? Probably that the vast majority are encased in plastic and what do the majority of folks do but pop them in the microwave or in the oven, still in their plastic trays. Which is what the instructions on the back tell us.

However, the material used for the trays is made of CPET (crystallised polyethylene terephthalate – try saying that after a couple of glasses of Prosecco!) and polypropylene because these plastics can withstand high heat. Some boast that the trays are recyclable; yes, that's helpful in reducing plastic waste but how many actually end up in incineration or in landfill for centuries to come? What about the zillions of those thin plastic film lids floating about?

There are many health warnings about the ingredients in the foods themselves, e.g. too much fat and salt, but how many warnings do you hear about or find on the sleeve of the ready meal regarding the plastic trays? The words 'microwave safe' or 'oven safe' merely indicate that the receptacle will not fall apart in a gooey mess when heat is applied! Nowhere is it mentioned that heating plastic allows the chemicals in the plastic to leak out into the food. Chemicals which are known to be hormone disrupters. Multiply the number of ready meals an individual may consume over the course of a year and the exposure to those chemicals (added to the chemicals in so many everyday plastic products) and it all mounts up with a resultant harmful effect on human health.

Dr. Charlotte Lloyd, environmental chemist, said on 'This Could Turn Toxic', a discussion panel hosted by City to Sea and Natracare (and worth a watch on YouTube), "when we analyse plastic in the lab, one of the main methods we use is microwave extraction to get chemicals out So don't microwave food in plastic as the chemicals very readily leach out". That would include leftover takeaways, even frozen home-cooked meals! This is a scientist telling us that they take the plastic apart in the microwave to analyse the chemical additives.

So, if a ready meal is a favourite, or is an essential for other reasons, always transfer the food to a china plate and cover with a china bowl or to a Pyrex dish before heating/cooking in the oven or microwave. Sound advice for us all!

For more eco tips, join us on Facebook or Instagram (#plasticsavvyaxminster) or visit our website <https://plasticfreeaxminster.org>.

NIGEL PHILLIPS GARDENING SERVICES

Does your garden need a good tidy

READY FOR SPRING

Phone Nigel Phillips 01297 35302

Also regular grass cutting and up-keep all year.
Friendly local service.

From St Giles' Church

St Giles' Church Lent Lunches

During the period of Lent, a delicious meal of home-made soup, bread and cheese followed by tea or coffee was available to enable people to get together and to raise money for good causes. All this had only been made possible by the work of generous volunteers.

This year lunches were provided on Wednesdays until the 27 March at 12 noon in the cricket pavilion. Soup deliveries were made to anyone unable to attend,

Donations were welcomed and all proceeds went to charity. Over the years, many charities have benefited from these.

The first lunch held on the 21 February was very well attended, despite heavy rain which formed an enormous puddle outside the pavilion entrance. After many leaps across, or paddles in the puddle, the hot soup was most welcome!

Many thanks go to Christine Thorne, the event organiser and her helpers, who all worked so hard this year.

Chris Thorne



Our Thriving Coffee Shop!

Having enjoyed the company and yummy biscuits on offer at Kilmington's weekly Coffee Shop, I thought it was about time someone wrote a short piece to encourage those who haven't made it yet to give it a go.

The Friday Coffee Shop was started by Ann Marsh way back in 2008 and she was ably assisted by Mary Tyler and Jan Farley. Over the years the team has changed and it has gone from strength to strength, with more and more people stopping off for a beverage and some of Margaret Astbury's wonderful biscuits, tarts and cakes – a different recipe each week. Margaret joined the team in around 2012 and Lucy Lane and Barbara Woodsford have now come aboard too.

For several years Ann kept a register of who attended each week, however, as it became ever more popular, this practice has fallen by the wayside! Passing walking groups pop in regularly, which is lovely, and we've had a few tourists who've been enticed in by the sign put out every Friday.

Please come and join us between 10am and Midday at St Giles Church, Kilmington each Friday of the year.

You will receive a warm welcome and lots of great chat. Donations are happily accepted for the upkeep of the Coffee Shop, however, if you're passing without any cash, please don't let that stop you popping in for a cuppa – we look forward to seeing you.

Gill Heighway



Mothering Sunday

We had a lovely Mothering Sunday service on March 10th at St Giles' with posies being given to all the ladies in the church and some were delivered after the service to ladies in the village. A sketch called A Job for Life was performed by Michael, Ann Marsh and myself which was amusing and enjoyed by the congregation. Thank you to the posy making team and for Diana Seward allowing us to use the barn to make the posies. Thank you to Sam for rescuing Diana's car which deviated from the track when driving down to the barn! Everybody was safe and the car survived!

Thank you to all who helped with the service.

Anna Crabbe



Kilmington Gardening Club - Talk



Perfect Partners – Jenny Short

www.kilmingtongardeningclub.co.uk

Jenny is a local garden designer whose subject was “how to transform your planting from ordinary to wonderful by carefully choosing how you combine your plants”. She explained that this did not mean companion planting, but rather how to combine plants and other elements of your garden to create the most attractive effect.

She divided her talk, illustrated with slides, into various aspects, starting with **Hard Landscaping**. She showed us how combining different materials such as slabs, stone setts, brick pavers and gravel, and incorporating shapes like curves and spirals, can help to break up large expanses of paving like patios, drives and pathways.

She then showed examples of how to combine different shapes and colours of **Foliage** – rheum, hostas, brunnera, irises for upright accents, dark-leaved anthurus, silver-leaved artemisia. **Texture** is also important – examples given were Japanese azaleas, prostrate cedars, grasses, fennel, euphorbia, yucca.

Next on the list was **Form** – how to combine different plant heights and shapes. Aim for a mix of spiky, floppy, rounded, fluffy, bushy, formal, pendant. Examples are weeping copper beech, verbascums, topiary, spiky sisyrinchiums, ferns. She showed us a picture of a grove of silver birch stunningly underplanted with white cyclamen at Yeo Valley Organic Garden in Somerset.

A border can be planted with **Flowers appearing at the same time**, to great effect. She showed us combinations such as eryngium and clematis *Etoile Violette*; artemesia and miscanthus *Morning Light* at Rosemoor; viola cornuta with nepeta; wisteria underplanted with bearded iris; sedum with echinacea purpurea. Large groups of the same plant make the most impact.

Examples of **Flowers and shrubs which bloom in succession** are euphorbia *wulfenii* (early Spring); epimedium (May); berberis and pittosporum (May-July); bearded iris (May-June); agapanthus (July-September); asters (August-October); sedum *Autumn Joy*; cyclamen hederifolium (August-November); snowdrops (January-February).

Focal points can be created with **Sculptures and Pots**. Sun-loving plants like thyme do best in terracotta, stoneware suits zantedeschias, glazed pots are best for plants that don't like to dry out.

Finally, Jenny gave us a list of irises which can be selected to flower nearly all year round: iris *danfordiae* and *reticulata* in January and February; *Harmony* in March; bearded iris in May in hot, sunny positions; for wet and damp sites, *pseudacorus* (flag iris), *laevigata* and *sibirica* in May and June, *kaempferi* and *ensata* in June/July; *unguicularis* and *stylosa* from October to March.

Beverley Perkins

PLANTS WANTED

If you are dividing up plants over the next few months and have any spare that you no longer need, the Garden Club would be happy to take them.

We are holding our annual plant market and coffee morning on Saturday, the 4th of May and would be grateful for any unwanted flower or vegetable plants.



Contact Lesley on 07900827689

A Message from Hospiscare

Don't let anything stand between you and supporting your local hospice. Be a Hospiscare Hero, take on a challenge this year and help raise vital funds to support end-of-life care across Exeter, central and east Devon.

Great West Run 2024

Join Team Hospiscare and take on Exeter's Great West Run - an exciting half marathon through the heart of Devon's capital. The 13.1 mile run is the only half marathon in Exeter where you can run the closed roads. Individuals from far and wide participate and Hospiscare is on a mission to get local people running the local half marathon to support your local hospice. When you sign up you will get a race space, running vest, sponsorship form and fundraising hints and tips.

Exeter Inflatable 5K

Put the fun in fundraising and take on an inflatable challenge for Hospiscare! The world's largest Inflatable 5k obstacle course is coming to Exeter on Saturday 27 April 2024. There are four different distances - 2.5K, 5K, 10K, 15K - to choose from!

Hospiscare Skydive 2024

Fancy an adrenaline-filled morning of skydives, all in aid of Hospiscare? Whether you're jumping in memory of someone special or to fulfil a bucket list challenge, support your local hospice and sign up in 2024. We have special Hospiscare Skydive days, Sunday 12 May, Wednesday 24 July and Saturday 7 September. But if you can't make any of those dates, you could book a day that suits you.

For more information and to sign up today, visit www.hospiscare.co.uk/challenges for more challenges and inspiration or email events@hospiscare.co.uk.



A young couple on holiday driving through the English countryside came across a monastery. A sign on the gates announced "Public lunch served daily. Fish and chips our speciality." The couple were quite hungry so drove up the winding road to the refectory, where lunch was being served. They both ordered their fish and chips and, having eaten it, agreed that it was the best they had ever tasted. They were so pleased they decided to compliment the chef and set off to find the kitchen. They walked down a long stone hallway to a dimly lit kitchen. There they saw a wizened and hunched little man tending to pots and pans by the hearth. "Excuse us," they inquired. "Are you the fish friar?" "No," he replied. "I'm the chip monk."

Sudoku Challenge Answers

Difficulty: Easy

1	2	6	4	5	7	3	9	8
7	9	3	8	6	2	4	1	5
4	8	5	9	1	3	6	7	2
2	3	9	5	8	6	7	4	1
8	5	1	7	3	4	9	2	6
6	4	7	1	2	9	8	5	3
5	6	4	2	7	8	1	3	9
9	1	8	3	4	5	2	6	7
3	7	2	6	9	1	5	8	4

Difficulty: Hard

6	5	2	7	3	4	1	8	9
3	8	1	6	9	5	4	2	7
9	4	7	1	8	2	6	3	5
5	7	3	8	4	1	9	6	2
2	1	4	9	5	6	3	7	8
8	6	9	3	2	7	5	1	4
1	9	5	2	6	8	7	4	3
4	2	6	5	7	3	8	9	1
7	3	8	4	1	9	2	5	6

Axminster Hospital League of Friends

The Trustees and volunteers of Axminster Hospital League of Friends are working hard to raise funds to begin a Home Hospice Service for the residents of Axminster and the surrounding area. We are organising some events during 2024 and we would love your support.

Dates for your diary

Thursday 11th April - Bacon butties – Church Rooms, Axminster

Tuesday 21st May – Annual Open Meeting – Speaker tbc – Axminster Hospital -the next 10 years

Saturday 8th June – Exeter Male Voice Choir – The Minster, Axminster

Saturday 6th July – Cream tea – Jackleigh Farm, Wyke

Thursday 10th October – Bacon butties – Church Rooms, Axminster

Friday 22nd November – Saxminster – The Minster, Axminster

For more information contact Helen Arnold admin@axmlf.com or 07951 679993



Kilmington Postscript

Income and Expenditure Account
Year ended 31 December 2023

	£ 2023	£ 2022
Receipts		
Post Boxes	78	50
Individuals	2275	300
Council Contribution	250	250
Interest	13	2
Advertising	2383	3002
Total	4999	3604
Payments		
Printing	3605	3950
Stationery	0	0
Sundry Expenses	0	0
Total	3605	3950
Excess expenditure over income	1394	-346
Bank Balance 1 January 2022	2889	3235
Decrease/Increase in year	1394	-346
Bank Balance 31 December 2022	4283	2889
Bank Balances 31 December 2022		
Current Account	1220	1839
Reserve Account	3063	1050
	4283	2889

If you would like more information on these accounts please contact the treasurer.

04 March 2023

Mrs V Larcombe

A Poor Life in Kilmington "The Paupers"



Friday 19th April at 7pm

Kilmington Village Hall. Tickets £4

An intimate look into the life of the poor in Kilmington during the 1800s. Shocking true stories of how the unfortunate tried to survive, and how society treated them.

A Presentation by the Kilmington History Group

To reserve seats, contact KHG@kilmingtonvillage.com
or Alan 07934 854615 / Peter 07747 636810

Dates for April 2024

Events That Happen The Same Time Every Week			
Sunday	10.30am	The Beacon	Worship Service (followed by Communion on 1st Sunday of month)
Monday	Early	Your House	Recycling and Food Waste Collections
	2.00 – 4.00pm	Village Hall	Country Dancing
Tuesday	10.00am - noon	The Beacon	Post Office and Community Café with free refreshments
	10.00am - noon	Village Hall	Table Tennis
Wednesday	7.15am	The Beacon	Early morning prayer (Term time only)
	9.30am	The Beacon	Tummies, Toddlers and Tinies (Term time only)
	10.00am - noon	St Giles' Church	Mums and Babies Support Group
	2.00 – 4.00pm	Village Hall	Short mat bowls
	2.00pm	The Beacon	The Beacon Home Group
Thursday	10.00am	The Beacon	Just for you ladies Bible Study and prayer (term time only)
	7.00 – 9.00pm	Village Hall	Table Tennis
Friday	10.00am - noon	St Giles' Church	Coffee and a warm welcome

Calendar Events			
Sun 31 Mar	5.00-7.00pm	New Inn	Live music from 'The Relics'
Tues 2 April	Early	Your House	Recycling and Food waste
Wed 3 April	9.30am	The Beacon	Men's Home group (for prayer and Bible study)
Sat 6 April	10.00am - 12.00	Village Hall	RBL Spring Coffee Morning
Sun 7 April	10.30am	Dalwood Church	Mission Community Holy Communion for Kilmington Parishioners
Mon 8 April	Early	Your House	Recycling, Food waste +Landfill
Tues 9 April	Early	Your House	Garden Waste Collection
Wed 10 April	6.45 for 7.15pm	Village Hall	KCC, 'One Life'
Thurs 11 April	1.45 for 2.00pm	Village Hall	KCC 'One Life' matinee
Fri 12 April	7.30pm	Village Hall	KGC Talk: Alan Down – 'All year round colour in the garden'
Sat 13 April	3pm	St Giles' Church	Celebrate Together Service
Sun 14 April	11am	St Giles' Church	Morning Worship
Mon 15 April	Early	Your House	Recycling and Food Waste
Tues 16 April	12.30pm	The Beacon	Community Contact Lunch
Fri 19 April	7pm	Village Hall	History Group: A poor life in Kilmington – The Paupers
Sat 20 April	8.30am	The Beacon	Special joint men and women's breakfast
Sun 21 April	9.30am	St Giles' Church	Holy Communion
Mon 22 April	7pm	Village Hall	Hitchcock Trust meeting
Mon 22 April	Early	Your House	Recycling and Food Waste
Tues 23 April	Early	Your House	Garden Waste Collection
Sat 27 April	6.00 for 6.30pm	Village Hall	KCC 'Oppenheimer'
Sun 28 April	9.30am	St Giles' Church	Morning Worship
Mon 29 April	Early	Your House	Recycling, Food Waste + Landfill

“You don't stop laughing when you grow old, you grow old when you stop laughing.”

- George Bernard Shaw

Useful Telephone Numbers

Village Contacts

Bell-ringing – Celia Dunsford	01297 33563	Kilmington Gardening Club Bev Perkins, Secretary	01297 631801	RBL – Jean Falconer – Sec Stafford Seward – Chairman	01297 33708 01297 33909
Bridge Club – Eric Samways Gill Bullock	01297 24260 01297 647768	Kilmington Community Cinema John Watts	01297 639758	Short Mat Bowls - Edith Turner	01297 34090
Country Dancing – Gill Perkins Marie Thorne	01297 32888 01297 631194	Kilmington Service Station	01297 300459	Table Tennis - Jenny Nickolls	01297 639758
Cricket – David Lavender	01297 631868	Kilmington Primary School (incl. Kilmington Pre-School)	01297 32762	Telephone Box Library Karen Hodder	01297 35162
Footpath co-ordinator, Tom Cook <i>footpaths@kilmingtonvillage.com</i>	07974 001197	Millers Farm Shop	01297 35290	Tennis – Christopher Eastwood Jane Chalk	07772 930411 07866 040310
Hitchcock Pavilion Bookings Peter Huscroft	01297 32243	The New Inn	01297 33376	Village Hall Bookings Louise Quincey	01297 32358
<i>www.kilmingtonvillage.com</i> Luke & Maxine Lawson	07719 909532	The Old Inn	<i>Closed</i>	Village Hall 100+ Club Jean Falconer	01297 33708

Medical and Support

Axminster NHS Hospital	01297 630400	NHS 111 can help if you think you need medical help right now.	111	Coombefield Veterinary Hospital	01297 630500
Axminster Medical Practice St Thomas Court Surgery	01297 32126	Emergency Dentist Helpline	0333 006 3300		

Services and Facilities

EDDC Recycling and Waste	01395 571515	Axminster Library	01297 32693	Clerk to the Parish Council	07800 826657
Water - General Water - Leaks	0344 346 2020 0800 2300561	Axe Valley Ring and Ride	07510 255965	Iain Chubb E. Devon District Councillor for Newbridges Devon County Councillor for Whimble & Blackdown	01297 35468 07932 459595
Electricity – Emergency, National Grid <i>(formerly Western Power Dist.)</i>	0800 6783 105 <i>or just 105</i>				
Axminster Care Service	01297 35550	Police: Crime stoppers – 0800 555111	Emergency – 999	General – 101	

Churches

St Giles' Church Rev. Julie Lomas	01297 35004	Baptist Church Office Pastor: Mike Hudson	01297 631638	Axminster Catholic Church Parish Priest: Father Jacek Kostuch	01297 32135
--------------------------------------	-------------	--	--------------	---	-------------

Advertising in Postscript, Payments, and Donations

Postscript is published ten times each year and is delivered free of charge to every house in Kilmington. All advertising fees and donations to Postscript are used to meet the cost of printing. ALL advertisements which are set out, from any source, are chargeable as follows and must be paid for in advance.

Exceptions: Any adverts which publicise events that are *in and for the direct benefit of the Village* will be free. The Editor's decision of eligibility is final.

The Editor also reserves the right to limit the number, size and content of such adverts.

Closing date for adverts is the 12th of the month prior to publication to allow time to resolve any technical issues. E.g. The 12th October for the November Issue.

Please supply adverts as a **print-ready pdf wherever possible**, alternatively a hi-res png or jpeg can be accepted.

For full specification or any questions on advert size, format, or technical questions, please email postscript@kilmingtonvillage.com

NEW ADVERTISING RATES	FULL COLOUR			BLACK & WHITE			
	FREQUENCY	1 off	X 5	X 10	1 off	X 5	X 10
Credit Card (70 mm x 40mm) - design as a 7:4 aspect ratio image		N/A	£75	£140	N/A	£45	£80
Quarter Page (90 wide x 136 mm high - Portrait) - design as A6		£30	£135	£240	£25	£112	£200
Half Page (184 x 136 or 90 x 276mm - Landscape) - design as A5		£50	£225	£400	£35	£157	£280
Full Page (184 x 276 mm) - design as A4		£75	£338	£600	£60	£270	£480
Back Page - A4 (supply with 3mm bleed)		£100	£500	£1000	N/A	N/A	N/A

Please Note: Credit card sized adverts may sometimes be printed slightly larger for aesthetic reasons in some editions.

PAYMENT: Cheques should be made payable to: Kilmington Postscript and posted to: **Mrs V. Larcombe, Brookside, The Street, Kilmington, EX13 7RJ.**

BACS account name is Kilmington Postscript, sort code: 51-61-23, account no: 18159400

COMING AND GOING FOR A SONG: There is no charge for these entries for items valued at £20 or less. However, donations are appreciated – these can be popped through Vicky Larcombe's door.

Please post payments for advertising in Postscript and donations to help with printing costs through the front door of Vicky Larcombe's house. Thank you.

Directions for finding Vicky Larcombe's house. Vicky is treasurer for Postscript.

From Whitford Road turn left and walk up The Street, passing Koppers, Khushi Kitchen, the Bull Pen, and West Gate on your right. The next house is Brookside where Mrs Vicky Larcombe lives. If you find yourself crossing Meadow Bank, you have gone a few steps too far.



ROYAL BRITISH LEGION

Kilmington Branch BR 2346 Established 1925

Kilmington Royal British Legion

Spring
Coffee Morning

**Plants, Gifts, Colyton Butchers,
Cakes, Silent Auction & Raffle**

Saturday 6th April

Kilmington Village Hall

10.00am to 12.00pm

Entrance & Tea/Coffee £1.50

