



KILMINGTON

# POSTscript

Issue 260 December 2023 - January 2024

80p where sold



## Editorial

At the beginning of December 1839, Dean William Daniel Conybeare, eminent palaeontologist and at that time vicar of Kilminster, can have had little idea of the forthcoming momentous event which would begin over Christmas that year, when eight million tons of rock slid from the cliffs into the sea between Axmouth and Lyme Regis. In 'Dean William Daniel Conybeare' Alan has looked into the life and times of this Kilminster cleric and his involvement with the 'Great Landslip'. We have also received RAF mess menus from the Christmases of 1944 and 1945 when a fine dinner was achieved for the British squadrons stationed in Egypt.

Events here this year start almost immediately with the RBL Christmas extravaganza on 2<sup>nd</sup> and Kilminster Christmas celebrations on 3<sup>rd</sup> December (see back cover and roadside posters). If you delay, you might miss something. We are grateful to Gill Bridger, Baptist Church Administrator, who always sends a list of Beacon activities for the Dates and Calendar events page. The Beacon is also hosting a Warm Welcome on two Thursdays. As Christmas Day and New Year's Day both occur on a Monday, we include (of course!) the revised bin collection dates, and there are even three different options for the disposal of (real) Christmas trees.

Kilminster's cricketers are amazing, but not everyone is aware that some time ago it also had an excellent football team. Martin Huscroft and Dick Sturch have sent us photos, hoping that some readers might recognise players and help with their research. There is news from the charities this month. Axminster and Lyme Cancer Support, who regularly send us their newsletters, have now opened their new premises right next to Axminster Hospital, which could be much more convenient than travelling to Lyme Regis. Hospiscare has sent us details of festive fundraising events, including a saxophone concert in the Minster. The Axminster Care Service reminds us of its offer to provide transport for hospital appointments but is appealing for more volunteer drivers.

Postscript has encountered a set-back. Just when we were feeling optimistic about the appointment of a highly skilled compiler, he has to withdraw due to a change in personal circumstances. We had also begun to look for a new editor, as I feel it is time to retire – despite having enjoyed it very much. We are seeking a solution and hope to be in a position to continue producing the magazine for Kilminster next year, starting as usual with the February issue. If you feel you could help in some way to keep our village magazine going, please give us a call for a chat.

We wish all our readers a happy Christmas.

*Janfryd*

Front page photo: © Marie Gardner    Centre spread photos: © Marie Gardner

## About Postscript

Please email all contributions and adverts for Postscript to:

***postscript@kilminstervillage.com***

*Alternatively, please give your item to any team member.*

***The closing date for submitting articles for the February issue is 15<sup>th</sup> January 2024 (12<sup>th</sup> for adverts).***

***Earlier submission is always encouraged to ease the burden on the volunteers!***

***All submissions will be acknowledged. Please email, or ring 01297 639115 if not acknowledged within 48 hours.***

### Postscript Team

#### Editor

Janfryd Gordon-Kerr  
01297 639115

**Please contact the editor via  
*postscript@kilminstervillage.com***

#### Team

Peter Ball 01297 32631	Jill Collier 01297 32390
Marie Gardner	Gill Perkins 01297 32888
Gill Heighway 01297 33951	Rob Swain 07771 984842

#### Distribution

Diane Overton  
01297 33569

#### Treasurer

Vicky Larcombe  
01297 33858

#### Postal address

The Granary, George Lane, Kilminster, EX13 7RT

**Postscript** is published 10 times each year and is delivered free of charge to every house in Kilminster. Almost all items in the magazine come from the village community who are very supportive of the magazine. The Postscript team are all volunteers and your donations, together with fees from advertisers, are used to pay for the cost of printing.

**Postscript** is printed by Axminster Printing 01297 32266

#### Advertising Payments, Rates, & Monetary Donations

Please see inside back cover for details about donating to Postscript, **advertising rates**, and how to pay for advertising. All donations go towards printing costs.

Thank you for your continuing support.

The average production cost per 28-page copy of Postscript with several colour pages is 80p.  
Extra copies are usually available from Millers Farm Shop.

**Disclaimers:** Items in this publication are the work of individuals and do not necessarily reflect the thoughts or opinions of the editorial team. The editorial team reserves the right to make small alterations to items submitted. Contributors are responsible for ensuring that parental permission has been obtained before pictures of children are submitted for publication, and that articles do not contain defamatory, libellous, or copyright/plagiarised material (text and/or images). The content of advertisements is not the responsibility of the editorial team. All queries should be addressed to the advertiser. This publication is online at [www.kilminstervillage.com](http://www.kilminstervillage.com) where there is also an archive of earlier issues.



# Join us on the Postscript Team

We're a small friendly group who pull together your village magazine.  
As a couple of members are now moving on, we need some more help.

Most of us meet just once a month for a couple of hours,  
others twice to finalise the content.

## Editor

Our Editor has been with us since Feb 2018 and now feels it's time we had some fresh thinking.

You'll help steer Postscript forward making it relevant to Kilmington residents, new and old. Therefore, you don't need to have lived here for generations - you'll certainly learn more about village activities.

You don't need any publishing experience. We work as a team, so you'll have all the help you need to settle into the role.

Give one of us a call to have a chat and find out more.

## Layout Designer

We need some help to lay out the material we receive onto the pages of the magazine. Due to a change in personal circumstances, our existing compiler is now unable to continue.

You'll need basic computer skills to use our relatively simple software.

Hands on help will be given to teach and guide you, until you get the hang of it. But it's a village magazine not Vogue, so we don't expect perfection!

Working from home, there is some flexibility to slot it into your daily routine.

Join the team and help to publish our village magazine.

Give one of us a call for a chat or email [postscript@kilmingtonvillage.com](mailto:postscript@kilmingtonvillage.com)

# Upcoming Events

## Kilminster Community Cinema



## And Then Come The Nightjars

**Wednesday 13<sup>th</sup> December**  
**Thursday 14<sup>th</sup> – Matinee**

Kilminster Village Hall



Kilminster Community Cinema

KCC is licensed for the screening of  
cinematic productions to an  
audience.

Set and shot in Devon, *And Then Come The Nightjars* brings that sense of authenticity to the screen for a story that is both big and personal, highlighting a changing world and the frailties and strength of people.

Vet Jeff (Nigel Hastings) at first reassures farmer Michael (David Fielder) about his cattle and Foot and Mouth, then has to return as the disease takes hold across the county and country. But there's more to the conversations than bovine health, it's the health of their own relationships, their pasts and their futures that are so closely intertwined which gets them both through. Nigel shows Jeff's easy authority and rigid vulnerability, and David creates in Michael a warm heart to his crinkly and cantankerous edges. Yes, you'll judge them as they go, but it might make you harder and warmer as you follow them.

Wednesday, Doors open 6:45pm, and the evening's entertainment starts at 7:15pm and ends about 9:30pm.  
Thursday matinee, Doors open 1:45pm, Film starts 2pm.

Come along and enjoy a film and have wine/soft drinks, ice-creams/tea/coffee. Cream Teas available during the matinee interval.

January film TBC – Wednesday 10<sup>th</sup>, Matinee Thursday 11<sup>th</sup>  
*The Great Escaper*

## Saxminster

The Minster  
Axminster



Friday 1<sup>st</sup> December at 7.30pm  
Complimentary glass of mulled wine  
Tickets £10 from Archway Bookshop or email [info@axmlf.com](mailto:info@axmlf.com)

All proceeds to Axminster Hospital League of Friends



## Gardening Club Talk

The next talk will be on Friday, January 12<sup>th</sup> at 7:30pm, entitled **Propagation**.  
This is a practical guide to raising your own plants from seedlings or from cuttings.



All welcome, non-members £3.00, Bar, Tea/Coffee.

Kilminster Gardening Club

## Five Alive Oil Syndicate



The January 2024 order deadline falls at  
6pm on Tuesday 9<sup>th</sup> January 2024.

**Please note: There will NOT be an order in December.**

Please submit a request for either an exact amount or if requesting a "top up", a full tank, then please furnish me with an accurate estimate (100 litres) of the quantity you require.  
**A minimum order of 500 litres applies.**

Colin Stewart 01297 792538  
[cogstewartcs@gmail.com](mailto:cogstewartcs@gmail.com)  
[cogstewart@aol.com](mailto:cogstewart@aol.com)

Please state Wednesday or Thursday when booking, and order your cream tea at the same time.

Tickets Pre-booked £5 or £5.50 on door, booking essential for the matinee.

To book contact John 01297 639758 or email:  
[wattsjohn307@gmail.com](mailto:wattsjohn307@gmail.com)

## Mobile Library



Tuesday, 12<sup>th</sup> December 2023 at 11:15–11:45 am The Street  
Tuesday, 9<sup>th</sup> January 2024 at 11:15–11:45 am The Street  
*January date not confirmed.*

**Please see the mobile library service closure notice on p9.**

## KNIT & NATTER

**MONDAY**  
**10am-12pm**  
**St. Giles Church,**  
**Kilminster, EX13 7RF**

**All abilities welcome!**  
**Tea & Coffee provided**  
**free parking**  
**level access to building**

**CONTACT LIN CROSS 07971760629**



# Upcoming Events

## Kilminster Sky at Night

We have three meteor showers through these two months and you can see Jupiter, Saturn and Venus throughout. **Jupiter** rises in the east in the early evening, setting in the western sky before dawn breaks. **Saturn** can be seen in the southern sky at sunset, setting mid evening at the beginning of December and progressively earlier to 19:00 by end of January. **Venus** can be seen easily, rising in the eastern morning sky progressively earlier just before dawn. All month **Mars** is below the horizon through the night, so can't be seen.

### December

- 1<sup>st</sup> **Sunrise 07:53. Sunset 16:12**
- 9<sup>th</sup> **Venus** and **Moon** appear close together
- 14<sup>th</sup>/15<sup>th</sup> **Geminids Meteor shower** is one of the most spectacular meteor showers of the year, with around a possible 120 meteors per hour at its peak. Unlike most other meteor showers, Geminids are not from a comet but from the 3200 Phaethon asteroid
- 17<sup>th</sup> **Saturn** and the **Moon** appear close together
- 22<sup>nd</sup> **Winter Solstice** The first day of winter in the Northern Hemisphere and the first day of summer (summer solstice) in the Southern Hemisphere. **Jupiter** and the **Moon** appear close together
- 22<sup>nd</sup>/23<sup>rd</sup> **Ursids Meteor shower** is active between December 17<sup>th</sup> and December 24<sup>th</sup>. At its peak around 24<sup>th</sup> you may be able to see as many as 10 meteors an hour
- 24<sup>th</sup> **Pleiades star cluster M45** and the **Moon** appear close together
- 25<sup>th</sup> **Fast moving Sleigh** crosses the night sky
- 27<sup>th</sup> **Full Moon** known as the 'Long night or Cold moon'

### January

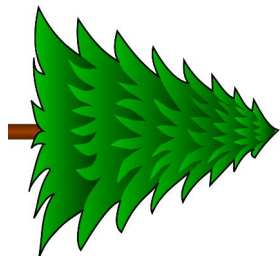
- 1<sup>st</sup> **Sunrise 08:15. Sunset 16:19**
- 3<sup>rd</sup>/4<sup>th</sup> **Quadrantids Meteor shower** is usually active between the end of December and second week of January, peaking around January 3<sup>rd</sup>–4<sup>th</sup> for only a few hours
- 8<sup>th</sup> **Venus** and the **Moon** appear close together
- 14<sup>th</sup> **Saturn** and the **Moon** appear close together
- 18<sup>th</sup> **Jupiter** and the **Moon** appear close together
- 19<sup>th</sup> **γ-Ursae Minorid Meteor shower** is active January 15<sup>th</sup> to 25<sup>th</sup> peaking around January 19<sup>th</sup>
- 25<sup>th</sup> **Full Moon** known as the 'Wolf or Ice Moon'
- 31<sup>st</sup> **Sunrise 07:52. Sunset 17:03**

*Peter Ball*

### Did you know that...?

Jingle Bells was the first (Earth!) song played in space during NASA's Gemini 6A space flight on the 16<sup>th</sup> December 1965.

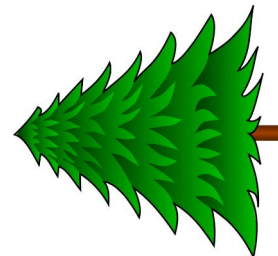
## Christmas Trees Wanted



The animals and birds at Axe Valley Wildlife Park would be pleased to have your Christmas trees, after you have taken the decorations off, to have in their pens for shelter and play – real trees only!

Please drop them off at the Wildlife Park or we can collect them.

Please contact Jayne on 07932 598771 to arrange collection.



## Kilminster Parish Council

### Speed Watch

Community Speed Watch volunteers are now fully trained and will be monitoring the speed of vehicles travelling through the village in the coming months. Speeding vehicles will be reported. We hope this proactive solution will improve the safety and quality of life for everyone in our community.

### Defibrillator Training

An evening training session is being arranged on Tuesday 16<sup>th</sup> January at 7:00pm in the Pavilion to provide vital hands-on practical experience and theoretical training. This will help you to react as efficiently as possible in an emergency. Places are limited so to reserve your place call Peter Ball 07747 636810 or email [pball@kilminstervillage.com](mailto:pball@kilminstervillage.com) If this session is fully booked we will arrange another.

### Footpaths

**Footpath 9:** The closure has been extended as the bridge over the Corry Brook has not yet been completed.

**Footpath 1:** The Devon County Council (DCC) order for the diversion of Footpath 1 has been posted on the village noticeboards and at News on the Kilminster village website. If you have any issues with the order, you have until 20<sup>th</sup> December to raise them with DCC.

### Parish Council Meeting

The next meeting is at 19:00 on Monday 11<sup>th</sup> December in The Pavilion. The January meeting is also at the Pavilion on Monday 8<sup>th</sup> at 19:00. All parish council meeting agendas and minutes are posted on village noticeboards and the village website.

*Peter Ball*

# Kilmington History Group

## Dean William Daniel Conybeare

Kilmington's Vicar, and a World-Leading Geologist

### The Landslip

The night of Christmas Eve 1839 saw the beginnings of a catastrophic event which changed the coastal landscape between Axmouth and Lyme Regis forever. Land heaved and ripped. Grinding movements destroyed cottages, and inhabitants struggled to escape before their homes were thrown into gaping chasms.

Many readers will be aware of the 'Great Landslip', a terrible event which slowly carried more than 50 acres of grazing pasture towards the sea whilst locals, mostly oblivious to begin with, continued to revel in drunken celebrations or slept off their overindulgence in their beds. By the evening of Christmas Day, the sea was reported to be 'boiling' as the beach lifted and slumped. Despite the scale of the tragedy, it was reported that 'neither person nor hoof' was harmed.

The process had moved eight million tonnes of rock, creating a great reef half a mile long and 40 feet high and enclosed a basin of sea water exceeding the area of five acres. New precipitous chalk cliffs and pinnacles formed alongside a great chasm three-quarters of a mile long. It was a truly breath-taking sight, attracting tourists and business to the area for years to come.

At the time, Kilmington's overseeing vicar was fifty-two year old Reverend WILLIAM DANIEL CONYBEARE. Upon hearing the news, he rushed with his close friend, Axminster-born Reverend WILLIAM BUCKLAND, to the site, not for voyeuristic pleasure but for scientific intrigue and advancement. Fortunately, both clergymen were also preeminent geologists of the age. Buckland was at the time even serving as President of The Geological Society! They would go on to make a famous scientific study of the landslip together and were at the top of their game.



Conybeare was obviously no slouch. He was able to hold important positions in both ecclesiastical and scientific circles, famously bridging the gaps in ideology between them. As a geological scientist, he had devoted much of his former life to palaeontology and decided that his work supported, rather than contradicted, his religious beliefs. Which was fortunate.

### Mary Anning

But it seems that he had a self-centred nature. Famously, he collaborated with Lyme Regis' most celebrated citizen, fossilist MARY ANNING, when she discovered the first specimens of the ichthyosaurus and the plesiosaur. Conybeare adopted a somewhat ungrateful attitude to recognising her contribution to palaeontological science at The Geological Society and it is said that he claimed her work as his own.

Even his obituary claimed that it was Conybeare who discovered the plesiosaur, 'a monster from the time of the biblical flood'! That Anning died without due recognition was perhaps in no small part because of Conybeare's ego.

### Conybeare in Kilmington

The Reverend Conybeare was Kilmington's overseer between 1836 and 1848 and he came from a lineage of well-respected clerics, including the Bishop of Bristol. He contributed to his large inherited wealth by collecting tithes from the parishes of Axminster, Kilmington and Membury (his income was stated at £975 per year – perhaps £130,000 to £150,000 today) and rent from land he owned. In Kilmington, he owned the 'Old Ley' field near Gorehead (now Fernwood Farm) which was let to John Frost, then the publican of the George Inn near the present-day war memorial.



### A Dispute with the Petulant Mr Tucker

In 1845, newspapers reported that respected village landowner WILLIAM TUCKER Esquire of Coryton Park dispatched his attorney to visit the Reverend Conybeare to insist that he cease meddling in Kilmington's affairs. Tucker proposed that Conybeare should entirely withdraw his attention and leave the management and support of Kilmington's business and chapelry to himself and the curate. Disappointingly, the reasons for his outburst don't appear to be recorded other than that they were, of a 'personal nature'.

Perhaps unsurprisingly, Conybeare declined Tucker's ridiculous proposal and insisted that it was his duty as vicar to oversee the welfare and religious instruction of Kilmington's parishioners and to do otherwise was neglect. A fair response. However, Tucker obviously felt that he was not a man to be argued with and, in what must have been a fit of pique, withdrew his support from Kilmington's National School (which was also overseen by Conybeare) to set up an opposing school of his own in the village. He would not be beaten.

Discontented, he then forced Kilmington's Sunday school teacher (employed by Conybeare) to stop teaching immediately or else he would be made homeless, turfed out of his farm with his family! And then, like a spoilt child taking his football home, Tucker proceeded to remove the clock and textbooks from the school, claiming that because his family had provided them in the first place, he was entitled to remove them. What are you going to do about that, Reverend!

Newspaper articles reported on the allegations and counter allegations as to whether Mr Tucker was justified or not. Even an (ex)school mistress stepped in to state her case. Either way, it was certainly petty and unbecoming of Kilmington's so-called gentry. Tucker was obviously used to getting his way, and perhaps he did because the same year fortune stepped in and Conybeare was promoted to take up the position of Dean of Llandaff in Cardiff by none other than the Prime Minister,



Sir Robert Peel himself. Mr Tucker presumably had mixed feelings about the matter! Shortly afterwards, Conybeare gave land to Axminster to allow a National School to be built.

His eldest son, the Reverend WILLIAM JOHN CONYBEARE succeeded him in August 1848 to become vicar until 1855 when he was forced to leave due to ill health. Multi-talented, he was well known in literary circles, having established himself as an author and essayist, writing books such as 'Perversion, The Causes and Consequences of Infidelity – A Tale for the Times', produced in three volumes! I doubt that it is a gripping read, if the preface, which exudes Victorian moralistic values, is anything to go by. Given that the book

was published in 1856, immediately after his tenure as vicar of Kilmington, one might wonder where his inspiration for the subject came from?



Both Conybeare men, Kilmington's past vicars for almost twenty years, died in 1857 within three weeks of one other. Today, the Conybeare name is remembered locally for GEORGINA EMILY CONYBEARE's efforts. Granddaughter of the geologist, she founded Axminster's Cottage Hospital in 1886 and her name is given to the Conybeare Unit.

*Alan Clarkson*

#### Did you know that...?

Christmas crackers were originally called "Bangs of Expectation". They were invented by a London sweet shop owner called Tom Smith in 1847. Initially he sold sweets wrapped in paper with a twist at each end and a love motto inside, later he added a little trinket and a "bang". By 1900, his company was selling 13 million a year.



## Axminster Care Service – Search for Volunteer Drivers

### Volunteer Drivers Needed

Help local people in need  
get to their medical appointments!



If you .....

Like to drive

Enjoy meeting new people

Can spare 2 to 3 hours a week

Call us on Tel. 01297 35550

All mileage and expenses paid



#### Axminster Care Service

Charity No. 900144

[axminstercareservice@gmail.com](mailto:axminstercareservice@gmail.com)

[www.axminstercareservice.co.uk](http://www.axminstercareservice.co.uk)

South Street, Axminster, Devon EX13 5AD

Axminster Care Service is a local organisation providing the framework for local people to help other people in need. The Service is limited to helping those who reside within the perimeter of Axminster Medical Practice. This provides the boundaries of the Service, as required by the Charity Commission. The Service is provided with the support of approximately 40 volunteers, all local people who want to help local people in need of support.

ACS provide support to pay specific bills for people in financial crisis, or household items in cases of emergency or due to sudden changes in circumstances. This is done by referral, often via social or care services, and can include clergy, GP, solicitor, teacher etc.

The charity also provides grants to local schools, groups and other organisations who find themselves facing difficulty in raising the funds they need.

Axminster Care Service provides a comprehensive transport service to help local people get to their hospital, surgery, and chiropody appointments, who would otherwise not be able to do so; approximately 2000 trips per year.

The charity is currently searching for volunteer drivers to join their team to meet the needs of the local community. Our drivers can choose how many hours they wish to volunteer, and what distances they wish to travel.

If you would like to find out more about ACS services or would like to volunteer for the charity, please contact our office on 01297 35550 or email: [axminstercareservice@gmail.com](mailto:axminstercareservice@gmail.com)

# Peter and Jane in the Garden



One plant most associated with Christmas is Mistletoe. The tradition of kissing under the mistletoe stems from Norse mythology, as it symbolises love.

I have tried several times to propagate it but without success. All the literature on sowing the seeds seems to imply a simple procedure

but I have yet to hear anyone say they've managed it!

Mistletoe grows mainly on apple tree branches but also Poplar, Lime and Hawthorn and although it does no real harm, it's classified as a parasite. Basically, ripe white berries are harvested in winter and stored damp and cool. In February/March, the black seeds and sticky sap can be squeezed onto a branch and smeared along the bark.

Thereafter, patience is required. If they are going to germinate it happens in April, but three years may pass before you see any leaves!

Holly, also a Christmas symbol, is said to represent the crown of thorns worn by Christ and the berries, his blood. Ivy too, like holly, symbolises eternal life, both being evergreen. Ivy is one of the few plants that flowers throughout the winter, providing essential supplies of pollen and nectar for bees.

Although I don't want ivy to overrun the garden and choke the trees, I do like to leave some for the bees in my orchard. I also use both holly and ivy as the base material for the Christmas wreaths I make every year. Sometimes the birds even leave me some colourful berries!

I leave the parsnips and leeks in the ground throughout winter and dig them up when the kitchen requires them.

They keep perfectly well like this and the taste improves with the frost, especially parsnips, which have the ability to turn starch into sugar to protect themselves against frost.

Most of my sprouts have blown, meaning they look more like cabbages than tight buttons on the stem. I don't really know why this is happening? I planted them really firmly in the soil, staked them early to prevent rocking and applied massive amounts of manure, so I'm a bit miffed. I believe F1-derived plants are less likely to blow, so as long as they are resistant to club root, I will try them next year. If the truth be told, in the four years I've had a vegetable garden at Combe, I haven't grown good sprouts.

To dig or not to dig? That is the question. I dig. Especially this Autumn, which has been very wet and impossible to harvest crops without walking on the soil, compacting and squeezing out the oxygen. Oxygen is essential in the soil, to aid uptake of nutrients and water into the plant.

Another question: When to apply compost and manure? As a soil conditioner, it is best applied in Autumn/Winter. As a provider of nutrients, apply in Spring prior to planting. If done then, it needs to be completely rotted. The process of rotting requires nitrogen and you don't want to use the soil's reserve.

Merry Christmas and a fruitful new year!

*Jane Chalk and Peter Guy*

## Gardening Club – AGM

Friday 10<sup>th</sup> November saw members and committee come together for the annual AGM and social evening.



The formal proceedings showed that the club is in good shape with 101 members and a profit was made this year.

The monthly talk programme and visits were well supported. The plant market and coffee morning in May saw a large attendance of both members and villagers.

In July the Flower Show had good entries across all the categories of Flowers, Fruit, and Veg, and in September at the Village Show the classes for Baking, Preserves, Art, Crafts, and Junior sections were well supported. The Photography classes had over 60 entries.

After the formalities the social evening could begin, wine, cheese, biscuits, and nibbles were served, and everyone got ready for a very lighthearted general knowledge quiz.

The committee would like to thank all the members for their continued support, and we look forward to seeing you at the first talk on January 12<sup>th</sup> next year.

We would like to wish our members a very Merry Christmas and a Peaceful New Year.

*Lesley Rew  
(Chair)*

## Kilmingston Players

We are staging 'Beauty and the Beast' in February half-term 14<sup>th</sup> – 17<sup>th</sup> February. Watch out for our posters in the new year with details of when tickets go on sale and how to buy them.

Rehearsals are in full swing and we are looking forward to entertaining you!

## Village Hall '100+' Club

*The winners of the draw held on 25<sup>th</sup> October 2023 are:*

17	Mr. D. Hurford	£30
38	Mrs. G. Gibbs	£15
89	Mr. D. Plant	£15
54	Mr. R. Crabbe	£5
122	Mr. S. Hodges	£5
182	Mrs. P. Hurford	£5



For further details, please contact Jean Falconer – 01297 33708

## RBL Kilmingston Branch



You may already be a member but could you, will you, volunteer to help?



We need someone to deputise for our Standard Bearer. You do not have to have been in the services and full training will be given at a time or times to suit you... would you like to hear more?

Email [rnorman345@aol.com](mailto:rnorman345@aol.com) or phone 07831 498029



# Mobile Library Closure



Devon County Council has made the decision that the Mobiles will sadly be closing at the end of February 2024. We are now working with Devon County Council on the next steps and how to best support customers through this transition. We will update you when there is further news. The Devon Mobile Library service will continue in the meantime.

*News taken from the Devon Libraries website*

We are launching a major drive to establish a wide network of community libraries in Devon's rural areas.

The community libraries will be developed as an alternative to the current mobile library service which is faced with falling numbers of users and rising costs.

Devon would now work with local organisations and community groups to create a bespoke service for communities that wanted one.

*Additional information from DCC website.*

## Kilminster Common

We are moving towards Mid-Winter and the air is still mild, the temperatures above what have been more usual for this time of year. One comment I heard last week is that 2023 will be the warmest this planet has experienced for thousands of years!

The trees are at last turning and the colours of the leaves are stunning. We were again very fortunate to have a sunny morning for the work party on The Common. The near daily rain since the 30 new Heath Lobelia plants were put in has ensured that they are well watered in!

The work of removing bramble and tree saplings from the central area of grassland continues and already there are indications that the bramble is reducing as a result of our efforts during the past couple of years. It is slow work and fortunately there is a strong and committed group of

volunteers who turn up to carry on with the task, a good workout. We would be very pleased to welcome anyone who wants to join us.

Some of you who want to become involved may not be able to make the work parties during the week. If you are interested in coming to a work party on a Saturday, please let me know. If there is enough interest we can do that too!

### Work parties on Wednesdays

29 <sup>th</sup> November	10-12	13 <sup>th</sup> December	10-12
20 <sup>th</sup> December	10-12	to include mince pies	
3 <sup>rd</sup> January	10-12	17 <sup>th</sup> January	10-12

Judith Simpson    [simpsonjudith71@gmail.com](mailto:simpsonjudith71@gmail.com)  
01297 32694

## Village Hall '100+' Club

Many villagers are members of the Village Hall 100+ Club but they may not realise what an important role the Club plays in the Hall's maintenance. If you are one of the many users of the Village Hall you will be aware how crucial it is to keep everything spick and span and in working order. After working on the external decoration of the Hall in 2022, work started on the internal decoration of the Hall in 2023. A range of other improvements have been made, plus regular maintenance during the year, and, of course, thanks to the generous additional donations of many, solar panels and battery storage have been installed

The funds from the Village Hall 100+ Club are used to help with such maintenance and improvements so that it is available for all to use.

The renewal notices for 2024 will be delivered to all existing members in January but new members are always warmly welcome. So please join the 100+ Club and contribute to this valuable facility – you never know, you may win a prize in the monthly draw!

The application form appears in this month's Postscript but application forms will be available in January from me at 8 Whitehayes Close or to collect from Pauline Horwood at Blue Haze (opposite St. Giles' Church).

We are most grateful for your continued support.

*Jean Falconer*

## President Retires



Dr. B. J. Lewis (known to us all as BJ), has announced her retirement as President of the Kilminster Gardening Club after many years' involvement in the Club. BJ was Chairman of the Club for 10 years before becoming President and she was instrumental in introducing many changes, bringing new faces on to the Committee and always moving with the times – and always acting with the Club's best interests at heart.



The Committee and members would like to thank her for all her hard work over the years and for making this Club what it is today. We wish her a very happy retirement and hope that she will now have more time to devote to her amazing garden.

*KGC committee*

# Cookery Corner

This month's recipes, unsurprisingly, are Christmas related. The first recipe, Turkey Burgers, is a great way to use up leftover cooked turkey and cranberry sauce on Boxing Day. The Tiramisu recipe is one of my family's favourites and I've tried many over the years, but this is by far the best. It makes a nice change from traditional trifle and is really quick to prepare if you have unexpected guests. The German cinnamon biscuits, to me, taste just like Christmas! They are often sold at Christmas markets and nowadays some supermarkets do sell them, but these home-made ones make an ideal Christmas gift as well as a perfect accompaniment to a Christmas coffee.

## Turkey Burgers

Makes 4

- 50g/2oz fresh breadcrumbs
- 3 tbsp milk
- 350g/14oz cooked turkey, chopped
- 100g/4oz cooked streaky bacon, chopped
- 1 tbsp wholegrain mustard
- 1 tbsp runny honey
- 1 large egg
- Salt and pepper
- 1 tbsp olive oil
- 4 Brioche buns, sliced in half
- 4 slices of Brie cheese
- 4 lettuce leaves
- 4 tbsp cranberry sauce
- Mayonnaise



### Method

1. Put the breadcrumbs and milk into a bowl and allow to soak for 10 mins.
2. Put the cooked turkey and cooked bacon into a food processor and whizz together until it looks like minced meat, so not too fine. Add the mustard, honey, egg and seasoning along with the soaked breadcrumbs and whizz again until the mixture starts to stick together.
3. Shape the mixture into four patties and chill for approx. 30 mins.
4. Heat the oil in a frying pan and brown the patties for about 5 mins, turning once. Place on a baking tray and cook for 10 mins at 180°C fan. Add a slice of cheese to each burger and return to the oven.
5. Place the brioche buns on another baking tray and cook along with the burgers for a further 5 mins. Ensure the burgers are piping hot before removing from the oven.
6. Assemble the burgers by first spreading mayonnaise on the bottom half of the bun, topping with the lettuce leaves, cheesy topped burger and finally adding a dollop of cranberry sauce and the other half of the bun.

## Christmas Tiramisu

Serves 6

- 1 packet of sponge finger biscuits (175g)
- 3 tbsp instant coffee mixed with 400 ml/16fl oz boiling water and allowed to cool
- 300ml/12 fl oz pot of double cream
- 250g/10oz mascarpone
- 75ml/3fl oz Marsala wine
- 5 tbsp caster sugar
- 25g/1oz dark chocolate
- 2 tbsp Christmas cake sprinkles such as mini snowflakes or holly leaves and berries

I use a 20cm square glass dish as it is the perfect size to fit the sponge fingers, 2 wide.

### Method

1. In a bowl, whisk together the cream, mascarpone, sugar and Marsala until it is a thick but spoonable consistency.
2. Pour the coffee into a large flat dish and then taking 4 or 5 sponge fingers at a time, soak the fingers in the coffee and then place in the dish, one biscuit deep. This usually uses 14 biscuits per layer. Allow the biscuits to absorb enough of the coffee to be well coloured but not too much, as they do easily fall apart.
3. Spoon half of the cream mixture over the biscuits and grate half of the chocolate on top of the cream. Repeat using the remaining biscuits and cream mixture. Top with more grated chocolate and cover and chill. When ready to serve, sprinkle the Christmassy decorations on top. This will keep for about 3 days in the fridge.





## German Cinnamon biscuits (Zimtsterne)

Makes 24

- 100g/4oz blanched hazelnuts
- 2 large egg whites
- 200g/8oz icing sugar, sifted
- 150g/6oz ground almonds
- 2 tsp ground cinnamon
- 1 tsp ground ginger
- Finely grated zest from ½ a lemon

### Method

1. Using an electric whisk, whisk the egg whites until they hold soft peaks. Add the icing sugar and whisk firstly on low speed to incorporate the sugar then on high speed for 2 mins. Set aside 50g/2oz of the meringue mix in a separate bowl.
2. Whizz the hazelnuts in a food processor until finely ground but not as fine as the ground almonds. Add these along with the ground almonds, the cinnamon, ginger and lemon zest to the remaining meringue mixture to make a stiff but slightly sticky dough. Chill in the fridge for 30 mins.
3. Lightly dust a piece of baking parchment with icing sugar, place the dough on top and dust with more icing sugar. Roll out to approx. 5 mm thickness. Using a 7cm star shaped cutter, cut out as many stars as you can, roll and repeat. Place the stars on a baking tray which has been lined with baking parchment. Using a brush, paint some of the reserved meringue mixture (glaze) onto each biscuit.
4. Bake at 130°C fan for 10–12 mins, allow to cool on the baking tray before transferring to a wire rack. These biscuits will keep for a week in a tin.



Diane Overton

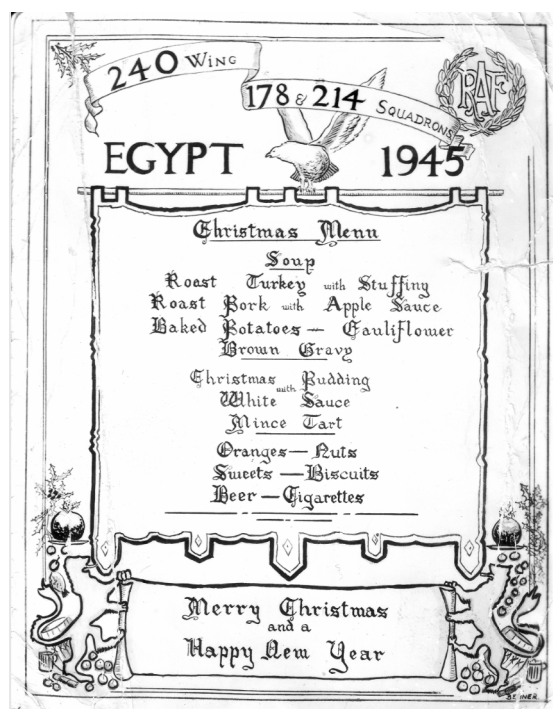
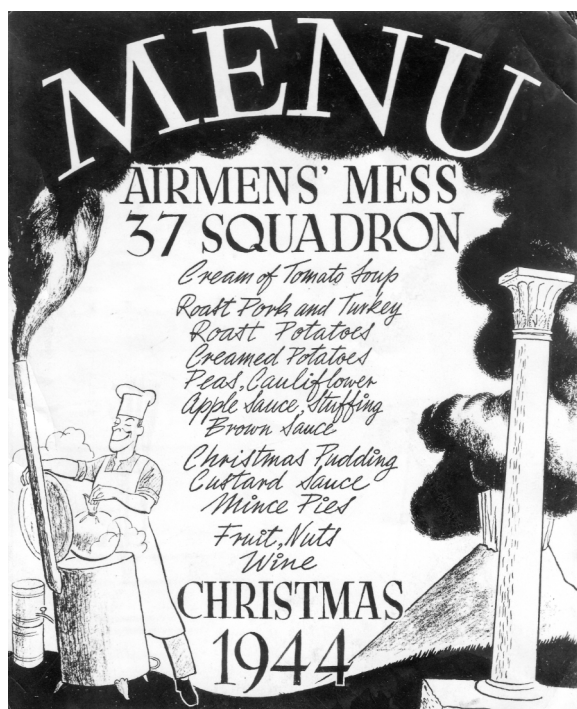
diane.overton@outlook.com

### Did you know that...?

Santa would have to visit at least 822 homes and cover 650 miles every second to deliver all the world's presents on Christmas Eve (source: MIT). Track his progress here from 1<sup>st</sup> December <https://www.noradsanta.org/en/>



## Christmas 1944-1945



My brother Fred Finnimore served in the RAF 37 Squadron and the 178 & 214 Squadrons in Egypt from 1944–1945 as an aircraft engineer. Fred sent these menus home to his mother who lived at 11 Hillcrest, Kilmington. The RAF had more choice of food for Christmas than we did at home!

Sheila Hill





## *Remembrance in Kilmington Christmas Coffee Morning – 2024!*

What an incredible few weeks; once again Kilmington demonstrated its wonderful support for all those who have served, supported, and in certain circumstances, paid the ultimate sacrifice in the service of their country. I would like to commence by thanking everyone for their support and generosity during the Poppy Appeal, especially Peter & Louise Wood and all their helpers and the Kilmington RBL Committee and friends, who organised the most enjoyable Remembrance events. On Saturday 11<sup>th</sup> November over 20 people commemorated Armistice Day and observed the two minutes silence marked by the firing of maroons. My thanks to Claire for providing the refreshments and especially the chocolate biscuits! On Sunday 12<sup>th</sup> November a large congregation took part in a joint service of Remembrance in the Beacon. Our thanks to Pastor Mike Hudson, Reverend Julie Lomas, and all their helpers for providing such a warm welcome, enjoyable service, and timely refreshments. At 1045 the congregation joined other members of the community at the War Memorial to conduct the act of Remembrance and lay wreaths in memory of all those



from Kilmington who had paid the ultimate sacrifice in both World Wars. On completion over sixty members made their way back to the village hall to enjoy a fantastic sit-down meal, provided by Nancy Rowe and her team. During the meal, it was a huge privilege to present a bouquet of flowers to Pat Sainsbury, our oldest member, who will celebrate her 'fourth' plus one hundredth birthday (104) on the 17<sup>th</sup> November.



Pat was born on 17<sup>th</sup> November 1919 and raised in Charlton, Greenwich, Southeast London. It was here that she met her husband (Walter) at a roller-skating rink! Walter was an Axminster man by birth who had trained as a St John's medic, and at the outbreak of WWII, he joined the Royal Navy as a medic. At the outbreak of bombing, Walter's mother moved back to Devon into Denver Cottage. Shortly afterwards Pat joined her and stayed there during the war, which enabled her to visit her husband whose ships were all based in Plymouth. Walter joined his first ship when their first child was just 3 days old. He was torpedoed more than once and his memories of being below decks, behind watertight doors, with the dead and wounded, remained with him for the rest of his life. Although Pat recollects Walter serving in four ships, she can only remember the name of one, HMS Watchman, a W-class destroyer. Pat remembers that Kilmington had no mains water, electric, or sewerage system, and was far more austere

compared to her home in Charlton; she also missed the bustle of London and the shops. At the end of the war, they moved back to London, but Walter longed to return to Devon and they returned in 1988. Pat and Walter were blessed with three children, two boys and a girl. Sadly, Walter died at the age of 69 and only one of their sons survives, who now lives at West Hill. Pat joined the RBL on the 1st January 1990, and says her secret of long life was to stay independent and make use of the 'Ring-and-ride' service each week to do her own shopping.



Another of our members also reaches the remarkable milestone of 100 on the 20<sup>th</sup> November, although Jean will remonstrate and remind me of the fact that she was born on the 19<sup>th</sup> November; it was her father who recorded the birth the next day, but forgot to annotate the correct date!



Jeanie McDowall Grace Hoare (née Bedwell) was born on the 19<sup>th</sup> November 1923 and grew up in Saltcoats, Stevenston, Ayr, Scotland, where she spent most of her early life. Jean recalls the enjoyment of swimming in the sea in all types of weather with her sister and mother. Later in life she moved to London where she worked as a secretary; it was here that she met her husband Jim Hoare from Kilmington, while sharing the same 'digs'. Jim was born in Kent Cottage! They married on the 29<sup>th</sup> November 1959 and eventually moved back to Kilmington in July 1990 after Jim retired. After moving to Kilmington, Jean became a long-standing member of Kilmington WI and a staunch supporter of its many organisations and charities, as well as being a very talented cross-stitch artist! After the death of her husband Jim in 2004 and in later life, she was often seen 'racing' her 'buggy' between Eastleigh Close and Hurford's Stores! Living in the 'Wickets', it's fair to say that they have been the most effective 'back-stops' Kilmington Cricket Club have ever had! Jean joined the RBL on 7<sup>th</sup> May 1991; she says that her secret

of a long life was 'wild' swimming and her unwavering love of Scotland!

### **Our best wishes and a Very Happy Birthday to them both!**

My sincere thanks to everyone for all their hard work in organising such a lovely completion to our Remembrance events.

*Reflection:* Most of us are aware or have knowledge of the huge sacrifice paid by those in the First and Second World Wars, but what about all the wars and conflicts since? Who remembers Korea, Kenya, Yemen, and the many other areas from which our servicemen, servicewomen, police, and other security services have not returned? How often do we think about the injured and maimed, their parents, wives, husbands, children, and carers who are left to mourn or support? When did we last stop to consider how many lives have been saved by the intervention of our security forces, or indeed the peace that they have achieved? Unfortunately, there seem to be an awful lot of people, who all too often forget that there is a price for the security and safety we all enjoy daily. Please don't forget!

My penultimate reminder is for our Christmas coffee morning, which will take place in the Village Hall on Saturday 2<sup>nd</sup> December at 1030 and our final get together at the New Inn on Friday 8<sup>th</sup> December, look out for the posters!!

Next, 2024! Here are the provisional dates for your diaries:

Spring Coffee Morning – Sat 23<sup>rd</sup> March

80th Anniversary of D Day – Thu 6<sup>th</sup> June

RBL family BBQ – Fri 16<sup>th</sup> Aug

AGM – Fri 4<sup>th</sup> Oct

Remembrance Sunday – Sun 10<sup>th</sup> Nov

Armistice Day – Mon 11<sup>th</sup> Nov

Christmas Coffee Morning – Sat 14<sup>th</sup> Dec

*As always, we continue to look for new members, so if you would like to join us, please get in touch, and remember, you do not have to be a member or veteran of the armed forces to become a member! In the meantime, thank you again for supporting the Royal British Legion, but more importantly the veterans and their families.*

We look forward to seeing you all in 2024 and thank you again for supporting the Royal British Legion so well. Please take great care and stay safe.

A Very Merry Christmas and Happy New Year to you all.

*Cdr Staff Seward OBE RN Rtd*

*Chairman RBL Kilmington Branch*

*07799 612557 – e-mail t60sas@hotmail.co.uk*







# Kilmington 2023







**Vicary & Co**  
Estate Agents & Valuers  
Residential - Commercial - Rural

**Thinking of selling?  
Call us today to arrange a  
FREE market appraisal of  
your home.**

**Vicary & Co Estate Agents & Valuers**  
5 South Street | Axminster | Devon | EX13 5AD  
01297 33449 | sales@vicaryandco.com | vicaryandco.com

Sales Manager Kelsey Lawrence  
Ian Vicary MRICS FISVA MARLA FAAV Pg Dip (Arch Cons) - Chartered Surveyor &  
RICS Reg. Valuer





**Scott Rowe**  
Solicitors

**BIG ENOUGH TO HELP | SMALL ENOUGH TO CARE**





- Buying & Selling Property
- Business Issues
- Agricultural Issues
- Wills
- Powers of Attorney
- Trusts & Estates
- Matrimonial & Family
- Personal Injury
- Resolving Disputes
- Negligence Claims
- Employment
- Debt Recovery

Axminster 01297 32345	Chard 01460 63336	Lyme Regis 01297 443777
--------------------------	----------------------	----------------------------

**www.scottrowe.co.uk**



Est. 1985  
**CRW**  
Accountants and Business Consultants

**Are you worried about your  
Tax Returns?**

We provide a friendly, professional service for self assessment returns, business accounts and all aspects of taxation based on experience, qualifications and confidentiality.

**HOME VISITS AVAILABLE**

For an initial free meeting please telephone our office and ask to speak to Hayley Perham (Taxation Director) or email: [crwaccountants@btconnect.com](mailto:crwaccountants@btconnect.com)

**Telephone 01297 553286**

The Personal, Professional approach to Taxation, providing "Peace of Mind"

CRW Accountants Ltd  
The Mews, Queen Street, Colyton, Devon  
EX24 6JU  
[www.crwaccountants.co.uk](http://www.crwaccountants.co.uk)

**TRUSTED LOCAL FAMILY FUNERAL DIRECTORS  
& MONUMENTAL MASONS**

**W. G. POTTER**  
WEST STREET, AXMINSTER  
01297 34283

**Julian & Karen Hussey DipFD NAFD**  
**Jasmine & George Hussey DipFD NAFD**



- Offices also at Seaton, Bridport, Honiton & Ottery St. Mary
- Pre-arranged & prepaid funeral plans




**www.funeraldirectors.uk.com**





**Buse Property Maintenance**

*"quality matters"*

**Based in Kilmington** & providing all aspects of **Repair, Refurbishment & Renovation.**

Including (but not limited to!):

- ✓ General Building Repair and Maintenance
- ✓ Bathroom and Kitchen Remodelling
- ✓ Interior and Exterior Decorating
- ✓ Regular Garden Maintenance
- ✓ Landscaping and Minor Construction
- ✓ Flat-pack Construction (no more frustration!)
- ✓ A lot more - just ask!

Call **Simon** on **07939 242 101** or email

**simon@bpmaintenance.co.uk**

**www.bpmaintenance.co.uk**

*"A friendly and efficient service, available in East Devon and West Dorset"*

## §Khushi Kitchen

Fancy a Homemade,  
Authentic Curry?



Then why not try a §Khushi  
authentic curry experience

- Fresh Frozen Curries available all day, every day at The Old Barn
- Kilmington's Friday Takeaway
- Event Catering
- 1:1 Cooking class with Mina



Email: [mina@khushi.kitchen](mailto:mina@khushi.kitchen)

Web: [www.khushi.kitchen](http://www.khushi.kitchen)

Address: The Old Barn, The Street,  
Kilmington, EX13 7RJ

 [facebook.com/khushikitchen](https://facebook.com/khushikitchen)

Classes: [www.minascookeryschool.com](http://www.minascookeryschool.com)

# A.G.M.

Axminster Garden Machinery

SALES • SERVICE • SPARES

Independent Specialists



**FACTORY APPOINTED  
AUTHORISED DEALERS  
OF ALL POWER  
EQUIPMENT WE SELL**



Proper Horticultural Engineering since 1979

**Visit our  
well stocked  
showroom  
now**



**Always  
Great Deals  
Available**

Unit 1A Weycroft Avenue, Millwey Rise, Axminster, EX13 5HU

Tel: 01297 631186

[www.axminstergardenmachinery.co.uk](http://www.axminstergardenmachinery.co.uk)



[www.hunthay.co.uk](http://www.hunthay.co.uk)

**Secure Containerised Self Storage**

**Suit Business or Domestic use**

**Caravan + Motorhome Storage**

**Industrial + Starter units**

**Easy, long day & weekend access**

**Owner lives on site**

**Close to A35**

[jenny@hunthay.co.uk](mailto:jenny@hunthay.co.uk)

**Phone: 01297 33839 / 07779 550771**





### Rediscovering Christmas

As you read this many of you will be preparing for Christmas. Although many of us think we know what happened on that very first Christmas, we get a lot of that information from sources other than the Bible. Our imaginations are often sparked more by school nativities or a popular retelling of the age-old story than it is by Scripture.

For example, the Bible never mentions there being 'no room at the inn'. In fact, in the original Greek, it is unlikely the Bible mentions an inn at all. It is more likely that Mary and Joseph were staying in the home of relatives, in which there was little room for the expectant parents. It is therefore unlikely that Jesus was born in a stable as is often pictured, but rather they were housed in a small room within the house that was not often used for guests. At the time, animals would have been kept in the adjacent rooms of houses over winter, not in separate outhouses, hence why a manger was used as a crib.

The Bible also doesn't mention a guiding star on the night Jesus was born. The star was a sign for the Magi (wisemen), who would likely have visited Jesus quite some time after his birth. There is also no specific mention of there being 'three' wise men. That number is often derived from the number of gifts given by the Magi, but Scripture doesn't clarify how many of them there were.

Maybe the biggest one is that Scripture doesn't state the date that Jesus was born. Although we celebrate it on the 25<sup>th</sup> December, it is unlikely that this is actually the true birthday of Jesus. However, with this one, the dark of winter is an apt time to remember the Saviour's birth of which the prophet Isaiah wrote; *'The people walking in darkness have seen a*

*great light; on those living in the land of deep darkness a light has dawned.'* (Isaiah 9:2). In the dark of winter, seeing the glow of Christmas lights and feeling the sense of expectancy despite the cold, always helps focus my mind on what Christmas is really about.

These misconceptions (and there are more) remind us that sometimes our picture of scriptural stories, and our understanding of God is shaped more by popular perceptions and modern retellings than by the text itself. But when we take a closer look at the biblical clues, a more accurate, beautiful, and hopeful picture emerges of what really happened that night 2,000 years ago and what it means for us today.

It is an event which still stands as one of the most monumental events in human history. The God of the universe becoming a man and entering into our dark, cold world to redeem a sinful and lost humanity. To reach out in love and offer *us* the opportunity to become children of God through faith.

There is lots of darkness in the world right now. There is chaos and confusion. But there is also hope. After all, the light shines the brightest in the darkest moment. My prayer is that each of us might discover the incredible true and transformational meaning of Christmas this year. That we might receive the gift of love that God freely offers us through Christ, and that we might accept our identity and inheritance as children of God.

Have a very merry Christmas, and a blessed new year.

God Bless,  
Pastor Mike Hudson (Baptist Church Kilminster)

## Christmas Warm Welcome

There are a lot of activities going on in the village and beyond over the Christmas period, many sharing the real Biblical Christmas story.

Rather than there being 'No room at the Inn', The Baptist Church Kilminster will be opening The Beacon on Thursdays 21<sup>st</sup> and 28<sup>th</sup> December to give a Warm Welcome to anyone who wants to pop in. Feel free to pop in for any reason – maybe the house is a tip and you want a coffee without looking at the mess, or you and some friends want to go out for a game of Scrabble, or the kids need to see a different set of four walls, or your mates want to meet up for a hot chocolate, maybe you want the company of other people or you fancy a game of table tennis.

Our doors will be open (not literally – I for one want to stay warm!) from 10am to 6pm. All ages welcome. Under 12s

need to be accompanied by a responsible adult. 12 – 17 years will need parental permission (contact numbers/allergies/first aid permission etc. required) to come unaccompanied. There will be zones for sitting and chatting, watching DVDs, playing with toys or board games, doing crafts, playing table tennis, or quietly reading/doing some work. Coffee will be on tap throughout the day, and we will be providing a light lunch and jacket potatoes with fillings for tea.

If you know in advance that you'd like to join us for lunch or tea it would be helpful if you could call the church office on 01297 631638 or email [admin@baptistchurchkilminster.org](mailto:admin@baptistchurchkilminster.org)

On Thursday 21<sup>st</sup>, you would be welcome to join us for a free family film night from 6pm.

Juletta Obudo

# Messy Sparklers



Our November session was filled to capacity. The weather was so hit & miss that we had to have everything under cover, but our wonderful advance team of helpers made sure the chairs were pushed back far enough to give us ample space inside.

All the messy activities linked to the theme 'Let there be Light'. We were thinking about God creating the light which gives life to everything on planet Earth and the fact that Jesus called himself the Light of the World, giving us spiritual life.

There were foamy bubbles with environmentally friendly glitter that shone when the sun appeared; black beans & rice with shiny things hidden in it; glittery orange scented playdough and star cutters, plastic cup lanterns, toilet roll firework painting/printing, and when the children arrived they had edible sparklers (chocolate fingers/bread sticks dipped in sprinkles!).



In our 'non-messy' area the children could play in the dark den with the fibre-optic lamp. There were also books, Duplo, baby/toddler toys and the climbing frame for them to enjoy. The parents could also check out the first experiences and parenting lending library.

Messy Sparklers is a sensory stay and play group for children under 5 years and their adults. Our next sessions will be on

Tuesday 5<sup>th</sup> December and 2<sup>nd</sup> January (we will let those on our mailing list know if this will be a full session nearer the time). We meet from 10:30am to 12:30pm at The Beacon. A contribution of £2 for the 1<sup>st</sup> child and £1 for additional children covers all the activities plus lunch for both children and their parents/carers. Anyone is welcome, but booking is essential, if you aren't on our mailing list, please contact: [children.youth@baptistchurchkilmington.org](mailto:children.youth@baptistchurchkilmington.org) to receive a booking email.

Remember to dress for mess!

*Juletta Obudo*



## Sudoku Challenge

To solve this puzzle, each 3 x 3 square, row and column must contain all of the numbers 1 to 9.

**Level: Hard**

*Solution on Page 24*

5				3	4	9		1
	3					6	2	
		6		9				
					3	1		9
9	6						3	4
3		1	9					
				6		2		
	4	2					1	
6		5	2	8				3

## The Christmas Star

When Advent nights are bright and cold  
Our memory turns to days of old  
When three Wise Men looked at a star  
And followed it through lands afar

They travelled to a distant land  
Through pastures green and desert sand  
To welcome Jesus here on earth  
And witness Mary's virgin birth

The star lit up a meagre place  
For in the Inn there was no space  
With Ox and Sheep for company  
Jesus was born for you and me

With loyal Shepherds standing by  
And Angels singing in the sky  
The Wise Men gave their gifts and left  
Leaving King Herod quite bereft

So now each year we check the sky  
For a new sign from way up high  
Will Jesus come to us again  
And save us from earth's sin and pain

*John Thorne*



# Kilmington Football Club

Dick Sturch was one of Kilmington Cricket Club's finest ever all rounders, a very hostile, fast bowler (one of the fastest we have had) and a hard hitting batsman, good enough to have scored 1,848 runs, taken 293 wickets and caught 52 catches for the club in a playing career between 1974 and 1987. Dick was in the team when I started playing and was a great team mate and role model for a young cricketer. An early eye opener was when Dick took his boots off after a long spell of bowling on a hot summer's day, on a rock hard pitch, with blood oozing out of his socks. He used to cut the fingers off a pair of gloves, fill them with Vaseline and put them over his toes to try and reduce the damage of pounding his foot down in his bowling action. Dick never saw that as an issue and was one player you could absolutely guarantee to always give 100% effort on the field. The photograph shows Dick in his playing days.



*Kilmington Cricket Club Devon Fuels Cup Winners 1984:  
Back row (L-R): Graham Dendle, Simon Hodges,  
Tim Lawrence, Tim Overton, Dick Sturch, Bernard Harding  
Front row (L-R): Cresset Thursby-Pelham, Peter Davis,  
John Lavender, James Kirkcaldie, Colin Chesterton*

Dick has subsequently gone on to make a name for himself as a very knowledgeable local historian. He probably knows more about the history of Millwey Rise than anybody, particularly in relation to the football team, but he is also an excellent reference point for other local sport and sportspersons, particularly around football and cricket, Old Colytonians and general East Devon history.

Dick has asked the Postscript readers for help filling in some gaps in relation to Kilmington Football Club, one of his many interests.

*Martin Huscroft*

The following photograph is of Kilmington Football Club. Not sure of the exact date but possibly late 1940s/early 1950s? Dick would be very grateful if anyone could fill in any of the names?

*Kilmington Football Club: Late 1940s/early 1950s?*

*Back row (L-R): ?; Peter Stamp; ?; Jack  
Lavender; ?; ?; ?; ?.*

*Middle row (L-R): Dave Hawkins; Peter Hutter; ?; ?; ?;  
Don Broom; Dave Wraight.*

*Front row (L-R): Sid Pascoe; Mick Willey;  
the goalkeeper Jock ?; ? Newbery; ? Broom;  
Dudley Hurford.*

There is a second photograph that some may be able to help answer some questions. Dick believes that the following photograph is also of a Kilmington football team, possibly the only recognition factor would be the rather distinctive shirts. Dick is interested to know anyone knows any of the players in the photograph or if Kilmington, did indeed, play in this distinctive strip at any time?

Many thanks for your help. Any gaps that can be filled in would be a big help in the research.

*Derek Sturch*

**Please send your answers to Derek directly.**

*Derek (Dick) Sturch: derek\_gwen@hotmail.com*

Please do not email Postscript with your info, many thanks.



# KILMINGTON VILLAGE HALL

## 100+ CLUB

The village hall is used for social events for all ages and by the many clubs and organisations which form such an integral part of our village community. The '100+ Club' helps to fund essential maintenance as well as any improvements needed to keep the hall in good repair for everyone to enjoy. We very much hope that existing members of the 100+ club will be willing to renew their subscription in 2024 and, of course, we welcome new members.

The 100+ club members are entered into a monthly draw, and the prizes are as follows:

1 X £30, 2 X £15, 3 X £5,  
AND AN EXTRA 5 X £5 IN THE CHRISTMAS DRAW

The annual subscription for membership remains at:

£11.00 SINGLE    £20.00 DOUBLE

Should you wish to renew your membership or to join the club for the first time, will you kindly complete the application form below and return it to one of the addresses shown below in time for the first draw at the end of January.

***MAY WE THANK YOU IN ADVANCE FOR YOUR SUPPORT.***

### APPLICATION FORM

I / We would like to join/re-join the '100+ CLUB'

Name/s.....(please print)

Address.....

.....Post Code.....

Please find herewith £11 single subscription / £20 double subscription (delete as necessary).

Cheques should be made payable to: **KILMINGTON VILLAGE HALL MAINTENANCE FUND.**

Please return the completed form with subscription to:-

**Jean Falconer, 8 Whitehayes Close, Kilminster, EX13 7RR OR Pauline Horwood, Blue Haze (opposite St. Giles' Church) OR The New Inn.** Alternatively, you can pay by bank transfer to:

*Kilminster Village Hall Maintenance Fund, Sort code: 30-90-37, Account no: 25864560*

*Ref: 100+ Club + your name.* If paying by bank transfer, please email [jean-falconer@sky.com](mailto:jean-falconer@sky.com) with your name and address and date of payment and we will confirm your number/s for 2024.

Your 100+ Club number/s will be ...../.....

Your number/s will be included in each month's draw.

12/2023





## Festive Fundraising for Hospiscare

The festive season is almost upon us and what better way to spread Christmas cheer than by raising funds for your local hospice? The hospice is a charity and always needs donations to help fund its expert care for local people living with terminal illnesses. Throughout November and December, please consider joining the hospice's supporters to fundraise in a variety of ways, from making mince pies and carol-singing to raffles and fancy dress. There are so many ways to help and there are lots of fundraising ideas on the hospice's website (see below for the address).

### Christmas Tree Recycling

Leave the effort of getting rid of your Christmas tree to Hospiscare. Their volunteers will collect and recycle your Christmas tree between 11–13 January 2024 in return for a donation to the hospice. Registration opens on their website in November, where you can find out more and book in your collection.

### Reindeer Run

Hospiscare has introduced a new Reindeer Run school challenge this festive season. Get ready to dash, prance, and make a difference in your local community. Sign up for FREE as a school, pre-school, nursery or group and receive a pack filled with make-your-own antlers, stickers, games, activities, colouring-in cards and more.

### Light Up a Life 2023

Light Up a Life is the hospice's annual celebration of the lives of departed loved ones. There will be three beautiful memorial events at Exeter Cathedral and in Honiton and Cullompton of hand-picked readings, poems, music and carols in remembrance of all lost loved ones. There is also an online Gallery of Memories where you can leave a dedication in the memory of those dear to you.

To find out more about these events and other festive fundraising ideas, please visit [www.hospiscare.co.uk/festive](http://www.hospiscare.co.uk/festive)



## Films Available For Hire



If you were unable to come and see our films on the big screen, we can now offer you the opportunity to enjoy first-rate films in your own home. For a small hire cost of £3 for up-to 7 day loan, we have the listed films on offer. Each month, following our film show, that DVD will become available for hire. We will not be publishing an updated list each month, so look out for the posters to see what the KCC is showing.

To book the film and arrange to collect, contact: Eileen and John Birch, by phone: 01297 34595 or email: [johnbirch598@btinternet.com](mailto:johnbirch598@btinternet.com)  
Collect from: Hill View, Wellmead, Kilmington (opposite the New Inn).



Kilmington Community Cinema

*Please Note: The Blu-ray discs require a player that can accept Blu-ray discs; these will **not** play on a standard DVD player. Newer equipment under 3 years old will probably be Blu-ray compatible, but check for compatibility first.*

	
West Side Story	The Courier
The House of Gucci	Little Women
Downton Abbey A New Era	No Time To Die
The Good Liar	Belfast
ELVIS	The Duke
Operation Mincemeat	
The Railway Children Return	
Fisherman's Friends One and All	
Mrs Harris Goes To Paris	
Living	
A Man Called Otto	
Empire of Light	
Allelujah	
What's Love Got to Do With It?	
Phantom of the Open	
LION	
And Then Come The Nightjars	

### Did you know that...?

You might think that the use of Xmas as the shortened version of Christmas is a modern creation but in fact it goes back to the mid-1500s. The Greek letter X is the first letter in the Greek word for Christ: Χριστός.

## Axminster and Lyme Cancer Support



[www.axminsterandlymecancersupport.co.uk](http://www.axminsterandlymecancersupport.co.uk)  
[www.facebook.com/axminsterandlymecancersupport.co.uk](https://www.facebook.com/axminsterandlymecancersupport.co.uk)  
**New Telephone Number:** 01297 816559  
Email: [info@axminsterandlymecancersupport.co.uk](mailto:info@axminsterandlymecancersupport.co.uk)

**New Mailing Address:** Axminster and Lyme Cancer Support, Cross Keys House, Chard Road, Axminster, EX13 5EB



### Newsletter no. 62

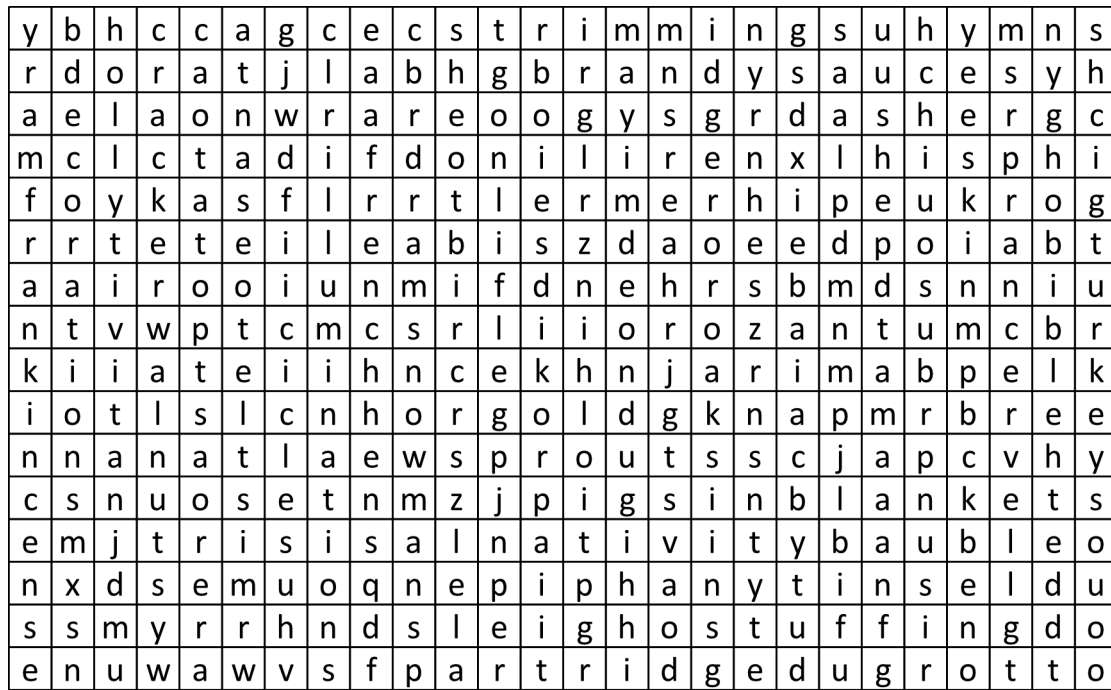
ALCS are delighted that they now have their new premises, at Cross Keys House in Axminster, close to the hospital. From Chard Road you go through the hospital entrance, then turn right and follow the driveway straight ahead to their own allocated parking space and disabled access. Many of their regular events such as the Monday drop-ins, support groups and acupuncture will now take place in Cross Keys House, instead of the Scott-Rowe room inside the hospital. A new therapist, Stephanie Chan, has joined their team. She studied in the U.S., has qualifications and certification in traditional Chinese medicine, has worked in the U.S. and

Japan, and specialises in acupuncture. She already has a clinic in Axminster.

The men only events continue. Blokes' brunch and Men's Pie and Pint take place in local pubs, often with invited speakers. There is also information from the Creative Hub about making leather keyrings, a writing course and a Christmas wreath workshop.

If you would like to receive the full newsletter which has more detailed information, or to register your interest in an event, or have any queries for ALCS, please use one of the addresses above to contact them.

# Festive Themed Wordsearch



bauble	bible	brandysauce	cards	carols	choir	christmas	cracker
cranberry	crib	dasher	decorations	ebenezer	elf	epiphany	frankincense
frenchhens	gladtidings	gold	grotto	hohoho	holly	hymns	icicles
illuminations	joseph	krampus	logs	magi	mary	marzipan	mistletoe
myrrh	nativity	nativity	noel	partridge	pigsinblankets	prancer	pudding
reindeer	roastpotato	santa	sleigh	snowman	sprouts	stuffing	tinsel
trimmings	turkey	walnuts					

**PLASTIC FREE**  
**AXMINSTER**  
SURFERS AGAINST SEWAGE

## Snap, crackle and pop it into landfill?

**PLASTIC FREE**  
**AXMINSTER**  
SURFERS AGAINST SEWAGE

The tradition of crackers at Christmas goes back to Victorian times, before the days of plastic! Did you know that in the UK 40 million crackers and their contents are thrown away each year?

The novelties inside crackers are largely made of single-use plastic (who needs a plastic moustache?), which will end up in the bin before Boxing Day is out. If we're 'lucky', as we are in East Devon, they'll reach the waste incinerator or, in an area which hasn't got one, the crackers will end up in landfill – forever.

The 'snap' can't be recycled because it is soaked in chemicals which make the bang. Half the time don't you find the bang doesn't happen either!

What about the packaging? Does it have a plastic window? Quite often the box and the crackers are decorated with microplastic glitter and foil, all of which are not recyclable, despite any claims made that only recycled plastic or bioplastic has been used in the making thereof.

The hat, made from tissue paper or shiny paper, will also end up in the bin, as the quality of tissue paper is of no value and the shiny one will probably have a thin layer of plastic on it. Plus, where are the crackers made? China? A pretty big

carbon footprint for the miniscule amount of time it takes to pull the cracker and read the joke before ploughing into Christmas lunch. So about the only thing recyclable is possibly the joke printed on paper!

There are some retailers now selling plastic-free crackers (but check if that includes the packaging), though they tend to be more expensive. Could you have a try at making your own out of empty toilet rolls, decorated brown paper, raffia, coloured twine, a sprig of green from the garden etc? There are websites with a hundred different corny Christmas jokes to use. Pop in a non-plastic gift – a chocolate/sweet or something useful, a forfeit, a poem, a promise, an encouraging message perhaps. As for that snap and bang, a chorus from the family will pretty much do it!

We know that a growing number of people are cutting down on waste at Christmas, which is fantastic news. Will you join them and crack this unnecessary excess? Even if you could start with just this one aspect and build on that each year; that would be an amazing gift to the planet. The other upside would be that we would lessen the profits in the coffers of the major suppliers – now there's an incentive!

**Plastic Free Axminster wishes you a lovely Christmas!**



## Sudoku Solution

5	2	8	6	3	4	9	7	1
4	3	9	7	1	5	6	2	8
1	7	6	8	9	2	3	4	5
2	8	4	5	7	3	1	6	9
9	6	7	1	2	8	5	3	4
3	5	1	9	4	6	7	8	2
8	9	3	4	6	1	2	5	7
7	4	2	3	5	9	8	1	6
6	1	5	2	8	7	4	9	3

# eyecatching

## DRESSMAKING AND DESIGN

in Kilington Village

Discuss your requirement with Rosemary  
Tel. 01297 639270

## NIGEL PHILLIPS GARDENING SERVICES

Does your garden need a good tidy

**READY FOR WINTER**

Phone Nigel Phillips 01297 35302

Also regular grass cutting and up-keep all year.  
Friendly local service.

## Stuart's Sweeping Service

Your local chimney sweep



**07432 118318** or  
**01404 831288**

Evening and weekend appointments available.

# AXMINSTER PRINTING CO LTD

TEL: 01297 32266

*Not just a Printing Company.... Established in 1969*



### Printing & Design Services

Leaflets, Posters, Booklets, Books, Labels, Tags, Menus, Banners, Magazines, Canvases, Order of Services, Headings, Business Cards, Appointment Cards, Compliment Slips, Headed Cards, Bookmarks, Invoice and Order Forms, Delivery Forms, Folders, Vouchers, Loyalty Cards, Wedding and Business Stationery, Plans, Prints (any Size up to A0) and so much more....



### Stationery

- Student Essentials
- Computer Inks & Toners
- Business Machines
- Packaging Supplies
- Filing Products
- Office Stationery

*All your stationery needs in one place!*



### Art & Craft Supplies

- Art supplies for the student or hobbyist
- Card making materials
- Lots of craft products and activity sets for children



Website: [www.axminsterprinting.co.uk](http://www.axminsterprinting.co.uk) Email: [sales@axminsterprinting.co.uk](mailto:sales@axminsterprinting.co.uk)

Address: Axminster Printing Co. Ltd. West Street, Axminster, Devon EX13 5NU

## MOPS'Y MOPS

CLEANING & DOMESTIC SERVICES

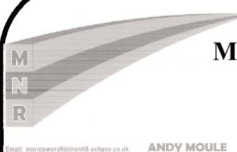
*SMALL JOBS TO  
SPRINGCLEANS.*

MATURE FEMALE CLEANER  
CALL SADIE  
0129734367  
MOBILE 07779703388



## MNR MOWERS LTD

Unit 8 Devonshire Court  
Heathpark Industrial Estate  
Honiton, Devon EX14 1SB



ANDY MOULE  
SALES SERVICE SPARES

Collection & Delivery in East Devon

For all types of Garden machinery

Tel 01404 548300 Fax 01404 548301

[MNRMOWERSLTD@UNIT8.ECLIPSE.CO.UK](mailto:MNRMOWERSLTD@UNIT8.ECLIPSE.CO.UK)



computer set up  
graphic & web design  
computer supplies  
remote support

**01297 816002**

[lawsoncomputers.co.uk](http://lawsoncomputers.co.uk)

[info@lawsoncomputers.co.uk](mailto:info@lawsoncomputers.co.uk)



## Axe Valley Motors 01297 34217

We pride ourselves in customer service and offer free collection and delivery or a loan car.



### Our Services

MOT's

MOT repairs

Menu price servicing

Diagnostics with the latest tools

General repairs

Welding

Small body repairs

Contact Alistair or Jenny to book or receive a quote.

## Vintage Engineering

An engineering company with a difference. We cater for the one offs and bespoke items, in Metal (welding and fabrication) wood, and technical objects.

We restore Vintage/Classic cars and motor bikes, M.O.T welding, repair gates, stairs, individual items, make new objects in steel, stainless and aluminium and manufacture or repair wood and mechanical items.



Do you have those broken or damaged objects that you need repairing or replacing that will not cost the earth, and those home repairs or builds that no one seems interested in. We can give you a cost to do those things you just want sorting.

Call 07444 244 562

Whitchurch Canonichorum

[vintageengineering.co.uk](http://vintageengineering.co.uk)

## Chris Stubbs Electrical

Est 1981

OFFICE ADDRESS: UNIT 2,  
THE ASSEMBLY ROOMS,  
GUNDRY LANE, BRIDPORT,  
DORSET, DT6 3RL

Bridport Office No. 01308 422726  
Kilmington Home No. 01297 631244  
Mobile No. 07836 247294  
email: [StubbsChris@hotmail.com](mailto:StubbsChris@hotmail.com)

"For a friendly service  
at a competitive price call us today"



## GREEN MACHINES Mobile Garden Machinery Repair

FORMERLY DAVID GEAR HORTICULTURAL

### Oliver Newton

### Service & Repair of all Garden Machinery

### Call Oliver Today!

01297 23913





# Dates for December 2023 & January 2024

## Events That Happen the Same Time Every Week - See Known Changes in Calendar Events

Sunday	10:30 am	The Beacon	Service
Monday	Early	Your house	Recycling and Food Waste Collections
	2:00 - 4:00 pm	Village Hall	Country Dancing
Tuesday	10:00 - noon	The Beacon	The Post Office and Community Cafe with free refreshments
	10:00 - noon	Village Hall	Table Tennis
Wednesday	09:30 am	The Beacon	Tummies, Toddlers & Tinies (Term time only)
	10:00 - noon	St Giles' Church	Mums and Babies Support Group
	2:00 - 4:00 pm	Village Hall	Short Mat Bowls
	2:00 pm	The Beacon	The Beacon Home Group
Thursday	7:00 - 9:00 pm	Village Hall	Table Tennis
	10:00 am	The Beacon	Just For You Ladies Bible study and prayer (term time only)
Friday	10:00 - noon	St Giles' Church	Coffee and a Warm Welcome

## Calendar Events

Sat 02 Dec	10:30 am	Village Hall	RBL Christmas Coffee Morning
Sun 03 Dec	10:30 am	St Giles' Church	Mission Community Holy Communion
	From 5pm	Kilminster	Christmas Celebrations - see back cover advert
Mon 04 Dec	Early	Your House	Landfill plus Recycling and Food Waste Collections
Tue 05 Dec	Early	Your House	Garden Waste Collection - Last collection before holiday season
	10:30 am	The Beacon	Messy Sparklers
Wed 06 Dec	09:30 am	The Beacon	Men's Home Group (for prayer and Bible Study)
Fri 08 Dec	6:00 pm	The New Inn	RBL 'Get-Together'
Sat 09 Dec	3:00 pm	St Giles' Church	Celebrate Together
Tue 12 Dec	09:30 am	St Giles' Church	Said Communion
	11:15-11:45 am	The Street	Mobile Library
	12:30 pm	The Beacon	Community Christmas Lunch
Fri 15 Dec	5:25 pm	The Beacon	Kilminster Village Carol Singing, finishing at The New Inn with Mulled Wine & Mince Pies - All welcome to join in
Sat 16 Dec	08:00 am	The Beacon	Men's Breakfast
Sun 17 Dec	6:00 pm	St Giles' Church	Carol service with brass band
Tue 19 Dec	Early	Your House	Garden Waste - Suspended - NO COLLECTION
	6:30 pm	The Beacon	Community Carol Service
Wed 20 Dec	2:00-4:00 pm	St Giles' Church	Mission Community Messy Christmas
Thu 21 Dec	10:00 am - 6:00pm	The Beacon	Christmas Warm Space with fun and activities for all the family - come and go as you please!
	7:00 pm	The Beacon	Youth Group
Sun 24 Dec	3:00 pm	St Giles' Church	Crib service
	9:30 pm - midnight	St Giles' Church	Midnight mass
Mon 25 Dec	10:30 am	The Beacon	Christmas Day Celebration Service followed by a Community Christmas Lunch - all welcome
Wed 27 Dec	Early	Your House	Landfill plus Recycling and Food Waste Collections (rescheduled)
Thu 28 Dec	10:00-6:00pm	The Beacon	Christmas Warm Space with fun and activities for all the family - come and go as you please!
Sun 31 Dec	10:30 am	Dalwood	Mission Community Holy Communion
Tue 02 Jan	Early	Your House	Garden Waste - Suspended - NO COLLECTION
	10:30 am	The Beacon	Messy Sparklers
Wed 03 Jan	Early	Your House	Recycling and Food Waste Collections (rescheduled)
	09:30 am	The Beacon	Men's Home Group (for prayer and Bible Study)
Thu 04 Jan	12:30-2:30pm	Axminster	Christmas tree recycling - West Street car park, Axminster
Fri 05 Jan	6:00 pm	The New Inn	RBL 'Get-Together'
Sun 07 Jan	10:30 am	Yarcombe	Mission Community Holy Communion
Tue 09 Jan	Early	Your House	Recycling and Food Waste Collections (rescheduled)
	09:30 am	St Giles' Church	Said Communion
	11:15-11:45 am	The Street	Mobile Library - TBC - See Closure Notice!
Thu 11 Jan	7:00 pm	The Beacon	Alpha Course begins - Held weekly for 12 weeks
Mon 15 Jan	Early	Your House	Landfill plus Recycling and Food Waste collections return to normal
Tue 16 Jan	Early	Your House	Garden Waste Collection - Normal schedule resumed
	12:30 pm	The Beacon	Community Contact Lunch
Thu 18 Jan	7:00 pm	The Beacon	Youth Group
Sat 20 Jan	08:00 am	The Beacon	Men's Breakfast
Tue 23 Jan	09:30 am	St Giles' Church	Said Communion
Tue 30 Jan	Early	Your House	Garden Waste Collection

# Useful Telephone Numbers

## Village Contacts

Bell-ringing – Celia Dunsford	01297 33563	Kilminster Gardening Club Bev Perkins, Secretary	01297 631801	RBL – Jean Falconer – Sec Stafford Seward – Chairman	01297 33708 01297 33909
Bridge Club – Eric Samways Gill Bullock	01297 24260 01297 647768	Kilminster Community Cinema John Watts	01297 639758	Short Mat Bowls – Edith Turner	01297 34090
Country Dancing – Gill Perkins Marie Thorne	01297 32888 01297 631194	Kilminster Service Station	01297 300459	Table Tennis – Jenny Nickolls	01297 639758
Cricket – David Lavender	01297 631868	Kilminster Primary School (incl. Kilminster Pre-School)	01297 32762	Telephone Box Library Karen Hodder	01297 35162
Footpath co-ordinator, Tom Cook <a href="mailto:footpaths@kilminstervillage.com">footpaths@kilminstervillage.com</a>	07974 001197	Millers Farm Shop	01297 35290	Tennis – Christopher Eastwood Jane Chalk	07772 930411 07866 040310
Hitchcock Pavilion Bookings Peter Huscroft	01297 32243	The New Inn	01297 33376	Village Hall Bookings Louise Quincey	01297 32358
<a href="http://www.kilminstervillage.com">www.kilminstervillage.com</a> Luke & Maxine Lawson	07719 909532	The Old Inn	Closed	Village Hall 100+ Club Jean Falconer	01297 33708

## Medical and Support

Axminster NHS Hospital	01297 630400	NHS 111 can help if you think you need medical help right now.	111	Coombefield Veterinary Hospital	01297 630500
Axminster Medical Practice St Thomas Court Surgery	01297 32126	Emergency Dentist Helpline	0333 006 3300		

## Services and Facilities

EDDC Recycling and Waste	01395 571515	Axminster Library	01297 32693	Clerk to the Parish Council	07800 826657
Water – General	0344 346 2020	Mobile Library	01884 244644	Iain Chubb	01297 35468
Water – Leaks	0800 2300561	(Tiverton Branch)		E. Devon District Councillor	07932 459595
Electricity – Emergency, National Grid (formerly Western Power Dist.)	0800 6783 105 or just 105	Axe Valley Ring and Ride	07510 255965	for Newbridges Devon County Councillor for Whimple & Blackdown	
Axminster Care Service	01297 35550	Police: Crime stoppers – 0800 555111		Emergency – 999	General – 101

## Churches

St Giles' Church Rev. Julie Lomas	01297 35004	Baptist Church Office Pastor: Mike Hudson	01297 631638	Axminster Catholic Church Parish Priest: Father Jacek Kostuch	01297 32135
--------------------------------------	-------------	--	--------------	---	-------------

# Advertising in Postscript, Payments, and Donations

Postscript is published ten times each year and is delivered free of charge to every house in Kilminster. All advertising fees and donations to Postscript are used to meet the cost of printing. ALL advertisements which are set out, from any source, are chargeable as follows and must be paid for in advance.

**Exceptions:** Any adverts which publicise events that are *in and for the direct benefit of the Village* will be free. The Editor's decision of eligibility is final.

The Editor also reserves the right to limit the number, size and content of such adverts.

**Closing date for adverts is the 12<sup>th</sup> of the month prior to publication to allow time to resolve any technical issues. E.g. The 12<sup>th</sup> October for the November Issue.**

Please supply adverts as a **print-ready pdf wherever possible**, alternatively a hi-res png or jpeg can be accepted.

For full specification or any questions on advert size, format, or technical questions, please email [postscript@kilminstervillage.com](mailto:postscript@kilminstervillage.com)

	Black and White Advertisements	Colour Advertisements
Credit Card (70 mm x 40 mm) - design as a 7:4 aspect ratio image	£7 or £30 for 5 editions	Not Available
¼ Page (90 wide x 136 mm high – Portrait) - design as A6	£15 for one-off or £65 for 5 editions	£20 for one-off or £90 for 5 editions
½ Page (184 x 136 or 90 x 276 mm – Landscape) - design as A5	£25 or £100 for 5 editions	£35 for one-off
Full Inside Page i.e. not back cover (184 x 276 mm) - design as A4	£40 or £150 for 5 editions	£50 for one-off

*Please Note: Credit card sized adverts may sometimes be printed slightly larger for aesthetic reasons in some editions.*

**BACK COVER:** Occasionally the back cover is available for a one-off colour page advertisement. Cost: £60. Requires **print-ready pdf with 3mm crop & bleed**.

**PAYMENT:** Cheques should be made payable to: **Kilminster Postscript** and posted to: **Mrs V. Larcombe, Brookside, The Street, Kilminster, EX13 7RJ.**

**BACS account name is Kilminster Postscript, sort code: 51-61-23, account no: 18159400**

**COMING AND GOING FOR A SONG:** There is no charge for these entries for items valued at £20 or less. However, donations are appreciated – these can be popped through Vicky Larcombe's door.

**Please post payments for advertising in Postscript and donations to help with printing costs through the front door of Vicky Larcombe's house. Thank you.**

**Directions for finding Vicky Larcombe's house.** Vicky is treasurer for Postscript.

From Whitford Road turn left and walk up The Street, passing Koppers, Khushi Kitchen, the Bull Pen, and West Gate on your right. The next house is Brookside where Mrs Vicky Larcombe lives. If you find yourself crossing Meadow Bank, you have gone a few steps too far.





Christmas Celebrations



KILMINGTON

Sunday 3<sup>rd</sup> December



SANTA'S PARADE

5pm at the New Inn  
Follow Santa's sleigh to the  
Village Hall.

6pm - Visit Santa's Grotto  
join in the fun and games  
Hot Chocolate and Cup Cakes  
for the kids



CHRISTMAS TREE

7pm Village Hall  
Light up the tree and  
join in with the carols  
sing-a-long.

Mulled Wine, Mince  
Pies, Tea and Coffee

FREE ENTRY

Funded by Kilmingington Community Association

Santa's sleigh sponsored by Kilmingington branch RBL

