

KILMINGTON

POSTscript

Issue 235 June 2021



EDITORIAL

For over a year life has been dominated by the progress of the insidious, invisible and ever-present Covid virus and many of the regular activities have been restricted in response to the best understanding achieved by leading scientists. Since vaccines have become available and the statistics more favourable there is a gradual, cautious relaxation as we adjust to more freedom and re-think social events in line with current wisdom, always aware that the process could be interrupted.

The Postscript team has been fortunate that, when regulations permitted us to meet at all, six of us could sit, well apart, in the open-sided barn at Summerleaze which was extremely well ventilated and also kept out the rain and hail, though not the noise they made on the roof. We owe tremendous thanks to all the contributors who found it possible to submit a variety of interesting items for publication when there didn't seem to be much going on. In this issue we have a fixtures list for June from the Cricket Club and a notice from the Tennis Club. The RBL has marked the national centenary and looks forward to its barbecue in July. Meanwhile some new ventures have quietly been advancing towards a time when they can open to the public. The Green Bee Adventures are starting at Beechcroft and the inaugural film night of the Kilmington Community Cinema is set for June 9th. There is also a new Mums and Babies Support group on Wednesdays at St Giles' and The Beacon's long-established Messy Sparklers and Toddlers and Tinies are joyfully re-opening.

Gardens add greatly to life in Kilmington and we have reminders of the successful Village Open Gardens weekend at the end of April (including the winning scarecrows). In his article about the 'hoar stone' Alan Clarkson points out another little-noticed object that history has left behind. Now lying on the ground as an unassuming lump, it had an important role for some time in the past at that exact spot beside the Roman Road. Occasionally in this area we see helicopters apparently paying great attention to detail while inspecting objects in the village. Usually they fly very low – though Marie managed to capture a more ambitious one above the moon for our front cover. Western Power, responsible for local electricity provision, were asked what they were actually doing and have kindly furnished us with an explanation.

Concern with nature and the environment continues. A Community Litter Pick is being organised for Kilmington and Shute as part of the National Spring Clean event, David Simpson takes issue with the Farming and Conservation article in May and there is an imaginary conversation between God and St Francis.

Janfryd

Front page - Marie Gardner

Centre pages - M Gardner and B Wood

CONTRIBUTIONS TO POSTSCRIPT

Please remember to use the email address for Postscript:

postscript@kilmingtonvillage.com

Alternatively, please give your item to any team member.

The closing date for submitting items for the July/August issue is 15th June 2021. All will be acknowledged. Please email or ring 01297 639115 if not acknowledged within 48 hours.

POSTSCRIPT TEAM

Editor

Janfryd Gordon-Kerr 01297 639115
janfryd@gordon-kerr.org.uk

Team

Peter Ball 01297 32631
mycraigdon@aol.com

Valerie Harding 01297 34206
vharding38@gmail.com

Jill Collier 01297 32390
summerleaze@hotmail.co.uk

Gill Heighway 01297 33951
gillheighway@gmail.com

Marie Gardner 01297 33489
m.gardner6819@gmail.com

Gill Perkins 01297 32888
john.perkins444@btinternet.com

Distribution

Diane Overton 01297 33569
diane.overton@outlook.com

Treasurer

Vicky Larcombe 01297 33858
vlarcombe30@aol.com

Postal address

The Granary, George Lane, Kilmington, EX13 7RT

Printed by Axminster Printing
01297 32266

Postscript is published 10 times each year and is delivered free of charge to every house in Kilmington. Almost all items in the magazine come from the village community who are very supportive of the magazine.

The Postscript team are all volunteers and your donations, together with fees from advertisers, are used to pay for the cost of printing.

DONATIONS

Arrangements for donating to Postscript have changed as a result of the closure of the village shop. Please see page 22 for details. Donations to the middle of May came to £3.60. All donations go towards printing costs. Thank you for your continuing support.

ADVERTISING RATES

Please see inside back cover for details.

The average cost per 28-page copy of Postscript with several colour pages is 75p.
Extra copies are available from Millers Farm Shop, where donations may be made.

Disclaimers: Items in this publication are the work of individuals and do not necessarily reflect the thoughts or opinions of the editorial team. The editorial team reserves the right to make small alterations to items submitted. Contributors are responsible for ensuring that parental permission has been obtained before pictures of children are submitted for publication.

The content of advertisements is not the responsibility of the editorial team. Queries should be addressed to the advertiser. This publication is online at www.kilmingtonvillage.com. In addition, earlier issues will also appear online from time to time.

NATURE NOTES

Great that Postscript is expanding its range of articles covering Kilmington life in general.

I was particularly interested in the article "UK's farmers committing to conservation", especially its emphasis on farmland birds, as I've been a lifelong enthusiast and recorder of birds. (Since moving to East Devon 12 years ago, I have sent off my sightings to the BTO - British Trust for Ornithology's site - Birdtrack).

Some local farmers may feel unfairly tarnished, lumped together with those continuing to cause local damage, particularly if they have done their best for our local wildlife. Those whose interest in food provision for birds - both wild and game - may have certainly done their fair share.

However, DEFRA, the government's own department, comes out quite clearly on this issue in recent publications - farmland birds still continue to decline and agricultural intensification is definitely the main driver in this decline. Unfortunately, the use of pesticides/herbicides is still increasing year-on-year. (At this time of year around Kilmington you can see brown fields managed by simply killing off all plant life.)

I can supply the references on the web, if anyone wants to read up on the over-whelming evidence. However, it is easy enough to find.

Staying closer to home in Kilmington – it's good to see Greenfinches, Goldfinches, Starlings and Song Thrushes doing well – local gardeners and those feeding 'their' birds need to pat themselves on the back for this, particularly if they are careful when they use harmful snail and slug pellets.

What is more worrying than even the decline in the farmland birds, is the ploughing up of permanent pasture in this area. This has gone unabated locally and has even been viewed as a source of pride. It may sound like a technical matter, but when this happens all stages of butterflies and moths that breed in grassland are killed off, along with beetles, solitary bees, fungi, soil worms – to name just a few groups. This is in addition to the fact that such re-seeded fields have no flowering plants or seeds for essential pollen or other food sources for wildlife.

In the current world, like shopping for the 'right food', farming has ethically become a whole lot more complicated. Efficient farming doesn't carry the moral weight it did because of the other costs involved in production. An example, again close to home, is the awful state of our polluted local rivers, which alarmingly nobody seems to dispute! There are also many other dilemmas to contend with: the fact that food production's excesses/waste could even be considered for bio-fuel, and that much of our farming produce is exported anyway. The issue of food distribution, nutrition and how much protein we really need has become as important as the actual production and growing of "our food".

Here in Kilmington a more positive way forward could be to write down what we now have in terms of our wider wildlife and the varied habitats around the village. I'd be certainly happy to compile a small book on the subject. (I did that for

the Birds of Wilton, when I lived in Wiltshire) – free copies to view at the Village Hall and Library Phone Box. Others could be sold to cover printing and stationery costs.

Anyone could contribute on birds, on gardens, farmland and woods everywhere inside the parish boundary - flowers and insects too. Those who have lived here longest could tell us what they remember seeing from childhood to the present day. We could also have a section on what measures local residents and land managers have taken and what benefits they are noticing.

Please contact me at davidthomsimpson@waitrose.com if you'd like to contribute and I'll make a start.

David Simpson



SUDOKU CHALLENGE

Level: Hard

To solve this puzzle, each 3 x 3 square, row and column must contain all of the numbers 1 to 9. The solution is on page 18.

2		8		3				
					5		4	
		6	8	4				3
	1				7			
		3		6		8		
			4				9	
5				7	2	1		
	7		9					
				8		2		6

KILMINGTON SKY AT NIGHT

Two big events this month: A solar eclipse and the summer solstice. Also good opportunities to see our big planets. Enjoy!

10th Solar Eclipse will be visible as a partial eclipse with around 20 percent of the Sun covered by the Moon. Starts at the Sun's edge at 10.08 am and ends at 12.22 pm, reaching its maximum phase at 11.13 am.

11th Moon close to Venus

13th Moon close to Mars

18th/19th/20th Moon close to Spica, the brightest star in the constellation Virgo. In the Northern Hemisphere we associate the star Spica with the spring and summer seasons. That's because Spica first lights up the early evening sky in

late March or early April, and continues lighting our night sky right through until around the September equinox.

21st Summer Solstice, actually takes place at 4.32 am.

For us in the Northern Hemisphere it marks midsummer. The year's northernmost sunrise and northernmost sunset deliver the year's longest period of daylight to the Northern Hemisphere and the shortest period of daylight in the Southern Hemisphere.

24th Full 'Strawberry' Moon

25th Saturn follows the moon into the sky at moonrise, **Jupiter** then follows Saturn into the sky.

Peter

KILMINGTON COMMUNITY CINEMA



23 WALKS

(12A)

Kilmington Village Hall

**Wednesday, 9th June
& Thursday 10th Matinee**



23 Walks is a story of an older man and woman who meet whilst walking their dogs in a park in North London and during the course of 23 walks start to fall for one another, except one of them has a secret. They tentatively form a relationship, but their families, past secrets and present problems look to scupper the slowly blossoming love. It is a little clichéd given that Fern has a small terrier and Dave a German Shepherd. However, clichés aside it is interesting since Fern is no pushover and it is Dave who seems the more hesitant of the two.

Cinema needs more films like these showing older people who have complex back stories and aren't happily married for forty years.

Wednesday - Doors open at 6.45 pm with the evening's entertainment starting at 7.15 pm and ending about 9.30 pm.

Thursday matinee - Doors Open at 2.00 pm with the film commencing at 2.15 pm and ending about 4.30 pm.

I am afraid during the restrictions there will be no hot drinks, but wine/soft drinks and ice-creams will be available, served to where you are sitting.

PRE-BOOKING IS ESSENTIAL audience numbers LIMITED and COVID rules must be followed.

Please state Wednesday or Thursday and if you could manage either, Tickets £5.

To Book: Tel: 01297 639758 leave contact details and booking will be confirmed, or email: wattsjohn307@gmail.com

VILLAGE HALL '100+' CLUB

**The winners of the draw held on
21st April 2021**

R Hurford	£30	D Hurford	£5
L Wood	£15	R Crabbe	£5
J Watts	£15	A Robinson	£5

For further details, please contact
Jean Falconer - 01297 33708

FIVE ALIVE OIL SYNDICATE

Please note that the June deadline for ordering oil falls on Friday, 25th.

As usual I invite requests for a specific amount or if ordering a 'top up' or a full tank, then please advise me of an accurate estimate with a minimum order of 500 litres.

Colin Stewart
01297 792538
cogstewartcs@gmail.com
cogstewart@aol.com

MESSY SPARKLERS RETURNS

The Beacon has been silent for over twelve months, except for Sunday services with or without a 'live' congregation and the Tuesday morning Post Office. So, what a blessing it has been, to be allowed to open our doors, to see and hear children and their parents/carers back again.

On Easter Saturday, we were able to host an outside Easter Trail. Over 50 children from babies to teens, plus their parents/carers, followed a map to find 'story eggs' which told the Biblical Easter story. When they returned to The Beacon, they had to unscramble the letter they had collected from each egg picture to spell 'He is alive!'. In celebration of the fact that Jesus is indeed alive, each child received an Easter Egg or dairy-free alternative.

May saw the return of both Messy Sparklers, our monthly under-5s sensory play group, and our weekly Wednesday morning baby and toddler group, Toddlers and Tinies. Toddlers and Tinies has been run by church member Trish W and her team for 20+ years. Covid managed something that the Baptist Chapel fire of 2009 did not – the closure of the toddler group! It has been wonderful to see familiar faces and meet some new people too.

At Messy Sparklers, we were blessed with good weather, whereas the day before was windy and rainy. Under the Covid restrictions at the time, only 15 adults could attend parent and toddler groups, excluding volunteers, which meant for the first time we had to introduce a booking system. The bonus was that we knew who we were expecting. The restrictions also meant that coffee and snacks

had to be served outside and that a maximum of six adults were allowed to sing at song time.

For many young children, this month had been their first experience of attending a toddler group. Some of them fully embraced it, while others were understandably more cautious. Some parents and carers were nervous at being with other people again. It was lovely to see how the children from the returning families had grown, including one who was only a couple of weeks old at our last session in March 2020.



We have had to make some changes to how we do things, for example there is no lunch at this time and activities must be planned to allow for social distancing. The children had named bags of Playdough waiting for them, which they could take home at the end of the session. There was also paint, water play, baby toys, Duplo, cars, ride on toys and colouring to do. At the end of the session, the children and their adults heard the Bible story of when Jesus fed over 5000 people with a little boy's packed lunch of five loaves of bread and two fishes.

The next Messy Sparklers session will be on Tuesday, 8th June from 10.00 – 11.15 am. Toddler groups are now allowed 30 adults (and to serve coffee inside!), but we will still need to operate a booking system to ensure we do not disappoint any children. If you aren't already on the mailing list for either of our under-5s groups and would like to be, please email: children.youth@beaconbaptist.co.uk

Juletta Obudo

KILMINGTON AND SHUTE COMMUNITY LITTER PICK

We are very fortunate in Kilminster to have a handful of hard-core litter pickers who are constantly out & about keeping our lovely village litter free .. hoorah!! However, there is sadly always more rubbish finding its way here on a daily basis and always more of us who could be doing our bit to help. Therefore we've decided it would be a great community contribution if we, as a village, joined in with the national Great British Spring Clean event running from 28th May to 13th June.

So, (drum roll), the Kilminster and Shute Community Litter Pick will be held on **Saturday, 12th June**. We hope many of

you will snatch up a grabber and a plastic bag and come along to join us for a poke amongst the hedgerows!! This will hopefully be followed by refreshments at a location to be arranged, but the exact details of the day are yet to be finalised, as we will obviously have to ensure that the current Covid guidelines are adhered to at all times. These will be announced over the next couple of weeks via both the village noticeboards and the Kilminster Now Facebook page.

Love where we live.

Nicky, Heather and Barbara

SMILE

Smiling is infectious
You catch it like the flu.

When someone smiled at me today
I started smiling too.

I passed around the corner
And someone saw my grin.

When he smiled I realised
I'd passed it on to him.

I thought about that smile
Then realised it's worth.

A single smile just like mine
Could travel around the Earth.

So if you feel a smile begin,
Don't leave it undetected.

Lest start an epidemic quick
And get the world infected!

Spike Milligan

KILMINGTON VILLAGE OPEN GARDENS 2021

A whopping £1,061.15 raised for the Village Hall!

Well! What a wonderful weekend when eleven village gardens opened their gates to the village to come, share and enjoy the benefits of last year's hard work gardening.

There was a map showing gardens open, fun family quiz and 20 very different scarecrows to see along the route which had been decorated with bunting. The sunshine and the gardens, which are all very different, gave enormous pleasure to villagers young and old. Many caught up with friends along the way. Everyone was mindful of the need for social distancing but they were pleased to have the chance for some wider social contact after the limitations of the last year.

There were some familiar, some less familiar, gardens. It was especially good to have so many folk kindly offering the chance for others to see, talk about and enjoy their gardens. And the sun shone.

One sentence does not do justice to each garden and the garden owners' hard work in preparing for the weekend, but here is a quick summary. The Chimneys, just off Whitford Rd, offered a beautiful walled garden beside the house along with an inspiring use of space and some very friendly chickens. The Old Cider Lodge off Silver St, which some in the village might have seen a few years ago, was looking beautiful with the wonderful tree collection under-planted with a carpet of spring flowers. The Old Post Office had a charming walled garden with the added interest of a pottery studio with gorgeous pots on display. Old Ruggs Farm, in the middle of the village, had a series of different 'rooms' all coming together to provide a peaceful, tranquil space. Number 4 in Whitehayes Close gave people the opportunity to join a discussion as to how plans for the garden might work, along with helping the children plant the strawberry patch. Over at Combe the orchard, lovely summer house and beautiful established trees, shrubs and wildflowers were a delight. Walking up Shute Rd gave an

opportunity to see two less familiar gardens at Summer Breeze and Kates Well. Both were looking very good with some interesting new planting at Kates Well and a lovely terrace and walkway around the shrubs at Summer Breeze. A diversion down to Breach revealed a much-visited and fascinating, ever-changing garden. It was lovely to see the profusion of spring blossom and the pond alive with tadpoles. Back on Shute Road was Waysfield which is a great example of unusual trees and shrubs put together to create a plantaholic's paradise. Climbing up through the woods, counting monkey puzzle trees as they came, people arrived at Bettys Ground which again was familiar to some and always worth the walk. The new child-sized accommodation in the form of a hidden treehouse was spotted by most.

Thanks to all who made a tremendous effort in opening their gardens, creating quizzes, making scarecrows, hanging

bunting but, most of all, thanks go to the numerous visitors who made it all worthwhile and contributed so generously. It all added to the uplifting, lovely, friendly and relaxed atmosphere throughout both afternoons.

The total collected from all the gardens was a massive £1,061.15. This has been given to the Village Hall fund and we look forward to seeing everyone in the hall again soon.

Krisztina, who inspired the scarecrow efforts, awarded

the following prizes: 1st to Karen Hodder, 2nd to Gill Perkins and 3rd to the James Family at Ways Cottage.

P.S. Breach and Bettys Ground are raising funds for Hospiscare and are opening their gardens on 21st/22nd August and 24th/25th October. Your support would be much appreciated.

Mary-Anne Driscoll
Kilminster Garden Club



1st - Karen Hodder



2nd - Gill Perkins



3rd - The James Family

MOBILE LIBRARY

Tuesday, 1st and 29th June at 11.20 - 11.50 am The Street

Vacancy
St Giles' Church
Kilminster
01297 35433



Letter from the Churches

Pastor Darrell Holmes
KBC Church Office
Kilminster
01297 631638
pastor@beaconbaptist.co.uk

As my daily Bible reading was becoming a little stale to me, at the beginning of this year I decided to look at and discover a little more about Celtic Christianity. It's been an interesting journey so far.

Between Easter and the upcoming Pentecost Sunday, a period of approximately forty days, I have been reading about some of the Celtic saints, their histories, and legends. Not much is known about some of them, but there are three saints whose feast days fall in the month of June. These saints are Kevin - 3rd June; Petroc - 4th June and Columba - 9th June.

Kevin seems to be less well known than Petroc or Columba so I'm going to share what is known about him.

Born to nobles, educated by monks, and living as a hermit, Kevin was one of those people whom others are just drawn to. He settled as a hermit by the upper lake at Glendalough (pronounced 'glen-da-lokh'), meaning 'glen of two lakes', in Ireland. However, as people kept being drawn to Kevin, many staying close by him, the place soon became too small, so they moved with Kevin to the larger area of the lower lake, where the best-preserved Celtic community of God remains.

The problem was that the lower lake was said to house a 'great fearsome monster'. Legend says that Kevin tamed the great monster with the peace and power of God. He went and stood in the lower lake to pray; the monster came up to attack Kevin by wrapping itself around him. Kevin

continued praying and subdued the monster into quietness and peace, still wrapped around him! Kevin persuaded the monster to move to the upper lake, away from the community, but near to him; he tamed the beast and lived with it.

Kevin was a man of deep prayer and a profound love of God. He would spend a great deal of time in peace and prayer – once, it's said, long enough for a blackbird to nest in his hand, which was stretched out of the window of his cell during a 'cross' vigil. He would teach others what he had learned during these times of vigil.

The great lesson that comes from Kevin is that of 'taming his monster', perhaps a metaphor for our own 'inner monsters'. How can we tame them and live with them purposefully? Perhaps a time of peace and prayer would help – a challenge for some, particularly me; I have problems being still, let alone being peaceful, as my family would attest to!

I'll end with a Celtic Blessing:

*May you have such a presence of God within you that it simply draws people to you and, consequently, to Christ.
May you know the peace and strength of the Creator God within you.*

May you still be in that peace and strength and, through prayer, still and tame your 'inner monsters'.

Gill Heighway

FRIDAY COFFEE SHOP AT ST GILES

Coffee shop on Fridays 10.00 -12.00 noon is very popular and many have welcomed its return after so long! We have been so fortunate that every Friday has been fine and not too chilly!

By the time you read this we will be meeting inside the church.

People have enjoyed catching up with friends and having delicious cookies made faithfully by Margaret Astbury. Thank you to Mary Tyler, Ann Marsh, Lucy Lane and the team for looking after everyone so well and making them all welcome.

Do come and join us any Friday. The church barrow nearly always has some food goodies for a small donation.

Anna Crabbe



ROGATION SERVICE MAY 9th AT HAMPTON FARM

**With thanks to the Williams' family
Prayer and Care for our Wonderful World.**



The congregation at Hampton Farm

Sixty-three of us gathered for a lively informal Rogation service led by Rev Tim Collins, who is currently a curate in Dawlish. Margaret led the worship on the piano and

afterwards tea and cake were served and people planted sweet peas seeds to take home.

What does Rogation mean? It was originally about asking God (Latin - rogare- to ask) to bless the crops and was usually celebrated a few days before Ascension Day. It is usually held outside in God's creation. We could hear the cows moving about in the next-door barn and we heard about how cows are cared for by a robotic system which is a very different way of farming from previously. We were reminded of how much we depend on crops in the fields and farm animals for our food as well as remembering so many other blessings.

Thank you to all who helped with the service and the generous donations amounting to £200 raised for the Farming Community Network.

Anna Crabbe

ST GILES MUMS AND BABIES SUPPORT GROUP

Every Wednesday 10.00 am – 12.00 noon

The lockdowns have been difficult for parents and babies born during this last year and that was the reason Mary and I started up this group, in St Giles' Church last summer, to provide a safe and relaxed space for the families to meet.

The parents do need to meet other parents, forming friendships, and their babies need to learn how to interact with others, something that was denied them due to the restrictions in place during the pandemic. It has proved popular with young parents in the local community and it is wonderful to see positive signs, that what we set out to do is really starting to happen.

Thank you all for your support and visitors are always welcome to our sessions. For more details contact Diana 01297 32334 or Mary 01297 34958.

Diana Mellows



A recent group meeting in St Giles' Church

@yecatching

DRESSMAKING AND DESIGN

in Kilmington Village

Discuss your requirement with Rosemary
Tel. 01297 639270

**NIGEL PHILLIPS
GARDENING SERVICES**

Does your garden need a good tidy

READY FOR SUMMER

Phone Nigel Phillips 01297 35302

Also regular grass cutting and up-keep all year. Friendly local service.

KILMINGTON CRICKET CLUB - JUNE 2021

1 st XI - B Division						2 nd XI - G Division East					
Sat	5	Thorverton	DL	1.00 pm	A	Sat	5	Kentisbeare 2 nd XI	DL	1.00 pm	H
Sat	12	Dartington/Totnes	DL	1.00 pm	A	Sat	12	Alphington & CW 2 nd XI	DL	1.00 pm	H
Sat	19	Ivybridge	DL	1.00 pm	H	Sat	19	Shobrooke Park 2 nd XI	DL	1.00 pm	A
Sat	26	Heathcoat 2 nd XI	DL	1.00 pm	A	Sat	26	Cheriton Fitzpaine	DL	1.00 pm	H



East Devon T20 Bash				
Thur	3	Sidbury	6.15 pm	A
Wed	9	Seaton	6.15 pm	H
Wed	16	Upottery	6.15 pm	H



TENNIS CLUB APPEAL

Kilminster Tennis Club is looking for a younger group of residents in Kilminster and surrounding area to take over the running of the tennis club.

The present team have been in place for several years and feel that it is time to step down and let others in the village take over.

We have at last reached a great milestone, having saved enough money to resurface the court, which will set us up for the next few years.

Let us hope that someone will continue to manage and keep this wonderful facility in our village going.

Please let me know if you are interested and could help.

Susan Moore - Chairman
Newhayes, Silver Street, Kilminster, Devon
Telephone 01297 32361
Email: newhayes@gmail.com



OUR HOAR STONE - MARKING THE BOUNDARY

I expect that many readers will have at one time or another walked along the picturesque Roman Road, perhaps leaving Kilminster to head westwards over Shute Hill and towards the two stone pillars in Shute. It is of course less than 200 years since this formed part of the main highway infrastructure between Axminster and Exeter.

How many of those walkers will have noticed, almost at the top of the hill on the right-hand side, a large, rounded sandstone boulder which sits half buried and alone, perhaps like a sentinel standing on a shady verge marking the junction of the ancient road and a little used track? And how many of those may have realised its historical significance?

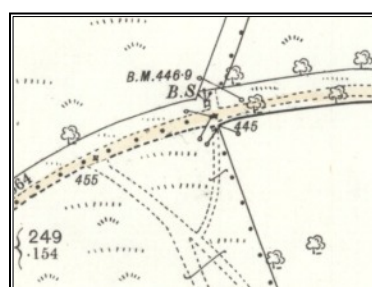
Even ignoring its geological past, this 'hoar stone' is certainly ancient and venerable. Quietly, it has sat fulfilling its purpose as a road marker and boundary stone, both separating and linking the three parishes of Kilminster, Shute and Dalwood for centuries. It also marks the most westerly point of our village.

It seems quite possible that its origin may date to Saxon, or even Roman, times and so it could have attended the highway for two millennia or so. The earliest recorded reference to our stone which I have found, was made by the local antiquarian James Davidson in his book *'British and Roman Remains in the Vicinity of Axminster'*, published in 1833, where he suggested that most such stones placed by the sides of these roads were probably Roman. The derivation of the term 'hoar stone' seems to come from the Anglo Saxon "ora" meaning a boundary and "stan" meaning stone.

Later, Axminster born George Pulman (journalist and founder of Pulman's Weekly News) also wrote of the "Hore Stones on Shute Hill" in his 1875 *'Book of the Axe'* as a 'relic of the ancient road'. He described 'the spot' to be known as 'Green's Grave', the site of a burial of a man who had committed suicide by jumping off the Old Shute House! Whether there is likely truth in that story is left for the reader to decide, but localised excavations of 1928 failed to find anything of interest.

Of course, this weathered boulder was not only a boundary stone for the three parishes, but it seems likely that for most of its time it was also a county boundary, separating Devon from Dorset. Dalwood parish was once wholly contained within an enclaved part of Dorset, like an island separated from the mainland by a Devonian sea. It was not until the 'Counties Act' of 1844 that a land exchange took place, and it was swapped for a similarly enclaved part of Devon within Dorset.

Alan Clarkson



INTERNATIONAL OPENING BOWLERS - KILMINGTON CRICKET CLUB V THE BOFFINS CRICKET CLUB 29th AUGUST 1985

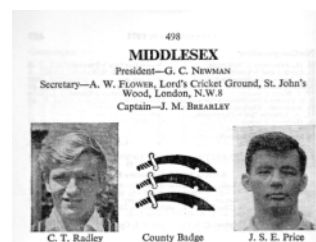
One of the most important aspects of cricket is the friendships you make and the people you meet year after year playing the game, particularly amongst the regular touring sides.

The Boffins have been touring East Devon since 1949 and playing at Kilminster since the 1950s/60s, always bringing an eclectic cast of characters, both playing and non-playing. Among those who have played at Kilminster are Tony Fairbairn, who formed The Racegoers Club/The Racing Information Bureau and selected 'Wogan's Winner' with Terry Wogan on his Radio show, the author Sebastian Faulks and his brother Edward, barrister, former Minister of State and the current Chairman of the Independent Press Standards Organisation.

In this fixture, The Boffins arrived with a very interesting pair of opening bowlers; John Price, the former Middlesex and England Test cricketer and John Nagenda, who opened the bowling for East Africa in the 1975 Cricket World Cup. John Lavender is certain that this is the only time that Kilminster's opening batsmen have walked out to face a

pair of cricket internationals opening the bowling for the opposition.

John Price (born 1937) played county cricket for Middlesex between 1963 and 1975, taking 734 first class wickets in 242 games with a bowling average of 22.39. His best bowling figures were 8-48 vs Derbyshire at Lords in 1966. He made his Test match debut against India in 1964 and took 40 wickets in 15 Test matches, with best figures of 5-73 vs India in the 3rd Test at Calcutta in 1964. His final test match was against Australia at Lords in 1972.



Photograph of John Price from Wisden is reproduced by kind permission of John Wisden & Co Ltd. (1972)

According to Wikipedia, in 1966, John Price was regarded as the 'fastest bowler in England'. Admittedly, at the age of

Continued on next page →

INNINGS OF KILMINGTON

BATSMAN	HOW OUT	SCORE
1 Tim Overton	b. J Nagenda	75
2 Mike Hurford	b. J Nagenda	6
3 Mike Marsh	b. J Nagenda	8
4 John Lavender (c) / (wkt)	c & b D Cottam	12
5 Cresset Thursby-Pelham	Not Out	44
6 Ed Greathead	b. C Duval	2
7 Geoff Wake	Not Out	
8 Martin Huscroft	DNB	
9 Bernard Harding	DNB	
10 Graham Dendle	DNB	
11 James Kirkcaldie	DNB	
Byes - 5	Wides - 5	
Leg Byes - 7	No Balls - 1	

FALL OF WICKETS

WICKET	SCORE	BATSMAN
1	24	Mike Hurford
2	38	Mike Marsh
3	68	John Lavender
4	152	Tim Overton
5	155	Ed Creathead
Total	180 - 5	

BOWLER	OVERS	MAIDENS	RUNS	WICKETS
J Price	8	2	20	0
J Nagenda	17	5	39	3
D Cottam	6	0	33	1
C Duval	13.1	1	59	1
R Fairbairn	3	0	13	0

INTERNATIONAL OPENING BOWLERS - KILMINGTON CRICKET CLUB V THE BOFFINS CRICKET CLUB 29th AUGUST 1985

48 he would not have been the fastest bowler in England when he played at Kilmington, although as a big man with a powerful action, he would still have been plenty sharp enough.

John Nagenda (born 1938) played cricket for Uganda and opened the bowling for East Africa in the 1975 Cricket World Cup. He made one appearance in the tournament, against a New Zealand team including great players Glenn Turner and Sir Richard Hadlee. In a game which New Zealand won by 181 runs, he returned the entirely respectable bowling figures of 1 wicket for 50 runs off 9 overs in a total of 309-5. His wicket was Ken Wadsworth.

Michael Blumberg (Nomads Cricket Club) who knows John well states that, "John had phenomenal stamina. He would regularly party all night, play squash from 9.00 - 11.00 am,



Photograph of John Nagenda is reproduced by kind permission of Michael Blumberg, Nomads Cricket Club

shower, change into cricket gear and then bowl unchanged to lunch. He once bowled 32 overs unchanged for the Nomads."

He has been President of the Uganda Cricket Association and Vice President of Stoics CC and Nomads CC, two of his many clubs which also included The Boffins, Mandarins, El Vinos, Pickersgill and the Hurlingham Club. Additionally, John is a regular journalist and a writer of poetry and fiction, his most recent work being 'One Man's Week'. He is the Senior Media and Culture Advisor to the Ugandan president, Yowed Kaguta Musevani.

The rest of The Boffins' bowling attack was interesting as well, given that it included Seaton's David Cottam, son of England Test cricketer Bob Cottam, and Claude Duval, 'The Punter's Pal' racing tipster from The Sun newspaper. The Boffins' umpire was Chris Poole, Racing correspondent from The Evening Standard and Racing Journalist of the year, 1979.

Martin Huscroft

INNINGS OF THE BOFFINS

BATSMAN	HOW OUT	SCORE
1 J Humphries	c. Ed Greathead b. Geoff Wake	14
2 D Cottam	b. Geoff Wake	0
3 M Ash	c. Geoff Wake b. James Kirkcaldie	15
4 R Fairbairn	c. Bernard Harding b. James Kirkcaldie	10
5 J Nagenda	c. Mike Hurford b. Graham Dendle	12
6 A Gordon	b. Bernard Harding	4
7 J Price	st. John Lavender b. James Kirkcaldie	0
8 A Fairbairn	c Geoff Wake b. Bernard Harding	6
9 C Fairbairn	LBW b. Bernard Harding	1
10 C Duval	c. Cresset Thursby-Pelham b. James Kirkcaldie	3
11 R Arthuthnot	Not Out	2
Byes - 1	Wides - 0	
Leg Byes - 0	No Balls - 0	

FALL OF WICKETS

WICKET	SCORE	BATSMAN
1	3	D Cottam
2	20	J Humphries
3	31	M Ash
4	47	J Nagenda
5	52	R Fairbairn
6	56	A Gordon
7	56	J Price
8	57	C Fairbairn
9	64	A Fairbairn
10	68	C Duval
Total	68 all out	

BOWLER	OVERS	MAIDENS	RUNS	WICKETS
Geoff Wake	8	2	20	2
Martin Huscroft	6	4	6	0
James Kirkcaldie	15.5	5	31	4
Graham Dendle	6	3	3	1
Bernard Harding	7	5	7	3

WHY DOES AN ELECTRICITY COMPANY NEED HELICOPTERS?

If you've ever wondered what the yellow 'electricity' helicopters are doing when they pay us a visit, here are the answers.

Western Power Distribution (WPD) told us that they have a four-year rolling programme to inspect their overhead lines, meaning they have to survey 36,000 km every year. A two-man foot patrol would take over 20 days to inspect 130 km; a helicopter can do that in one day.

There's another difference between helicopters and foot patrols – from the ground you can only see the bottom and sides of the lines, which means you can't see if lightning has struck the top of them or if there is damage at the top of the pole.

So helicopters are faster and have a better viewing angle than people on the ground, which is why WPD has five. It also has its own workshop with engineers who service them to keep them safe.

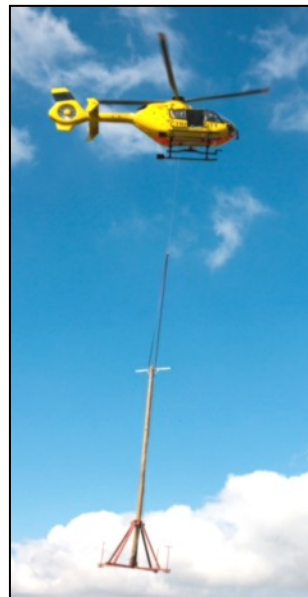
You may have waved to the helicopter crew. There's the pilot whose job it is to fly the helicopter. Generally he has to position the helicopter about 6m from whatever is being inspected. That can be the wires, pylons or wooden poles.

Sitting next to the pilot is the observer. Observers are specially trained to spot 50 different problems on poles and towers, which they enter directly onto a specially designed computer program. If they spot something really urgent they phone the control room from the helicopters.

You might not have seen the third crew member as they sit in the back of the helicopter. They're called mission systems specialists and they control the computers, cameras and lasers the helicopters are equipped with. WPD's helicopters have a unique combination of systems to help them detect potential problems that could cause power cuts.

Every helicopter is fitted with:

- A high definition video and stills camera – it can zoom in and take pictures that are so detailed viewers can see marks just millimetres across.



Helicopter pole lift

- A thermal camera – these are used with digital video recorders to show hot spots. If a piece of equipment is warmer than it should be, it could be a sign that a fault is going to develop.
- An ultra-violet camera – these are used to detect electrical discharge, which can cause faults to develop.
- A laser, known as LiDAR, which scans, models and measures vegetation near power lines. Tree branches can cause power cuts so WPD has an annual tree trimming programme. The helicopters show where the tree surgeons need to work.

Patrols are not the only thing the helicopters are used for. If there has been a fault on the network they can be sent to find out what the problem is. During a normal working day, with good weather conditions, any part of WPD's network can be reached within 30 minutes by helicopter.

WPD serves the Midlands, the South West of England and South Wales. Parts of its network are in areas that are difficult to reach by road. So, if engineers need to put a large electricity pole half-way up a mountain they ask for help from the helicopters.

And if the weather's been really bad and roads are blocked through snow or flooding, the helicopters can fly in people and equipment.

Other organisations can ask for help from the helicopters too – WPD's crews have dropped off supplies to villages cut off by bad weather and have helped monitor flooding.

Emergencies mean the helicopters can be called out anywhere, but if you're on Twitter you can get an idea of where they'll be

working by following #wpdspotted.

WPD is always working to improve the electricity distribution network's performance and the helicopters are an important part of that.

GARDENS OPEN FOR HOSPISCARE IN JUNE 2021

East Steps Cottage, Dunsford. Sunday, 6th June: 2.00 – 4.00 pm

West Barton, Thorverton. Sunday, 13th June: 2.00 – 5.00 pm

Rose Cottage, Thorverton. Sunday, 13th June: 2.00 – 5.00 pm

Felstead, Buddleigh Salterton. Saturday, 19th and Sunday, 20th June: 11.00 am – 4.00 pm

Hillside, Sidmouth. Saturday, 19th and Sunday, 20th June: 1.00 – 6.00 pm

The Pollinator Garden, Colyton. Friday, 25th and Wednesday, 30th June: 10.00 am – 4.00 pm

Orchard House, Exeter. Saturday, 26th June: 2.00 – 5.00 pm
Plymtree Open gardens. Plymtree, (two gardens), Saturday, 26th and Sunday, 27th June: 2.00 – 5.00pm.

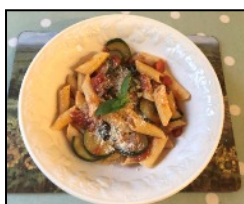
Springdale, Honiton. Sunday, 27th June: 2.00 – 5.00 pm

June is quite a plentiful month for fresh home-grown fruit and veg and this is reflected in two of the recipes. The pasta dish uses tomatoes and courgettes, which any gardener will appreciate can be quite prolific in a good season. The traybake is one of my favourites which isn't really an everyday recipe as it uses cream and meringues but is lovely as a treat for a birthday or celebration, such as Father's Day, which is on the 20th of June. The mushroom recipe is one I've been making for nearly 30 years and is a tasty and easy supper or lunch dish.

TOMATO AND COURGETTE PASTA

Serves 4

3 tbsp olive oil
1 large or 2 small to medium courgettes, sliced into half circles
1 small onion, chopped
1 clove of garlic, crushed
500g/20oz fresh cherry tomatoes or vine tomatoes, halved
1 large tin of chopped tomatoes in juice (400g)
50g/2oz pitted black olives, halved
350g/14oz approx dried pasta of your choice – follow the pack recommendation for 4 servings.
Fresh basil leaves, torn
Salt and pepper
1 tsp caster sugar
Fresh parmesan to serve.



Method

1. Heat 2 tbsp oil in a frying pan and brown the courgette slices on both sides. Remove from the pan.
2. Add the remaining oil to the pan and cook the onion and garlic until soft. Add the fresh tomatoes and simmer for 15 minutes.
3. Cook the pasta as per the pack instructions and then drain.
4. Add the chopped tinned tomatoes to the tomato sauce along with the olives, salt, pepper, and sugar. Finally add the courgettes.
5. Tip the drained pasta into the sauce, add the basil, and combine and heat through.
6. Serve sprinkled with grated parmesan.

If you fancy adding some meat to the dish, a couple of tablespoons of chopped, grilled bacon sprinkled on the parmesan also works well.

THREE CHEESE STUFFED MUSHROOMS

Makes 8, serves 4 as a main course or 8 as a starter

8 large Portobello mushrooms, stalk and skin removed
1 medium onion, finely chopped
1 tbsp olive oil
125g/5oz Stilton cheese, crumbled
75g/3oz grated cheddar cheese
50g/2oz grated Gruyere cheese
1 tsp chopped fresh parsley
50g/2oz chopped walnuts or toasted pine nuts
50g/2oz fresh breadcrumbs
1 egg, beaten
Salt and pepper



Method

1. Place the mushrooms into a lightly greased dish.
2. Heat the oil in a pan and fry the onion over a low heat until it is soft but not brown. Allow to cool.

3. In a bowl mix the three cheeses together with the nuts, breadcrumbs, parsley, cooled onion, and the egg. Season with salt and pepper.

4. Divide the filling between the mushrooms. Bake at 160C fan/180C/gas 4 for 25-30 minutes until the cheese is bubbling and the mushrooms are cooked through.

5. Serve with new potatoes and salad.

STRAWBERRY ETON MESS TRAYBAKE

Makes 1 cake

200g/8oz softened butter or soft margarine
200g/8oz caster sugar
1 tsp vanilla essence
4 eggs
175g/7oz self-raising flour
50g/2oz ground almonds
2 tbsp double cream



250g/10oz ripe strawberries, hulled and halved
1 tbsp caster sugar

For the topping:

200ml/10 Fl oz double cream
37g/1 ½ oz icing sugar

200g/10oz ripe strawberries, hulled and quartered
1 meringue shell or nest, crumbled. I use the strawberry flavoured ones but only because they give a better colour contrast on the cream.

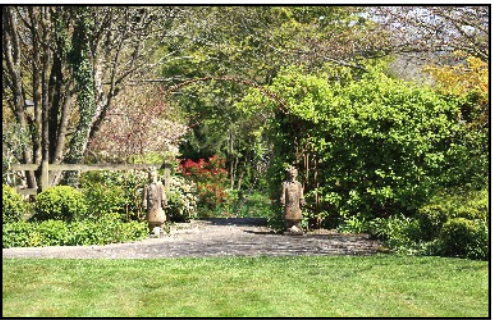
Method

1. Grease and base line a shallow (4cm deep) tray bake tin, approx 19cm by 29cm.
2. Beat together the butter or margarine with the caster sugar until light and fluffy.
3. Add the eggs, one at a time, beating well after each addition.
4. Fold in the flour and ground almonds. Finally stir in the vanilla essence and the cream.
5. Spoon the mixture into the prepared tin and scatter the halved strawberries on top. Sprinkle with the spoonful of caster sugar.
6. Bake at 180C/160C fan/gas 4 for 25 -30 minutes or until a skewer pushed into the centre comes out clean.
7. Leave to cool in the tin before turning out onto a wire rack and removing the lining paper.
8. Whip the cream together with the icing sugar until the cream forms soft peaks.
9. Top with the strawberries and the crumbled meringue and serve.

The cake will keep for 3 days in the fridge.

Diane Overton

Kilmington Village Open Gardens - April 2021



4 Whitehays Close

The Old Post Office

Chimneys

Bettys Ground

Breach

Kate's Well



Summerbreeze

The Old Cider Lodge

Old Ruggs Farm

Waysfield

Combe

MAD moments in the garden

The year has suddenly picked up its pace and it feels as if we are fast-forwarding to summer. One thing I have managed to do this year is concentrate a bit more on planting seeds. I'm lucky enough to have a greenhouse and a small heated propagator so can get things growing early which, given the cold spring, has been helpful. One problem I suspect others experience is the number of seeds you sow. Sow just the number of plants you want and you get a few failures, sow more than you need and they all come up.

Despite my efforts some seeds just don't seem to grow at all. I love *Thalictrum delavayi* and having bought one plant at the Axe Valley show some years ago decided to see if I could produce more plants from seed. That would then give me lots of plants for less money to create a large group of them. *Thalictrum* is a member of the *Ranunculaceae* family and native to China. Its small delicate clouds of flowers are lilac with white or green stamens and held on dark, wiry, upright stems reaching about four feet. Where I grow it in semi shade, in relatively heavy damp soil, it may be marginally shorter but doesn't need staking. The leaves are equally attractive, with masses of small leaflets forming a blue-green cushion about two feet in diameter at maturity. The stems look attractive until autumn, giving a long season of interest. I tried two different seed suppliers over the last two years, neither grew more than one plant. The packets of around 50 seeds seem to produce, if lucky, one seedling emerging from the compost. I looked up "how to propagate *Thalictrum*" on the internet where, somewhat frustratingly it claims they self-seed! Sadly



Thalictrum delavayi

not in my garden, or perhaps I have weeded them out thinking them *Aquilegia* that seems to self-seed everywhere. They do, at an early stage look very alike. This year I've had some compost that has not proved to be as good at retaining moisture without becoming waterlogged, perhaps that's the problem. That's my excuse anyway. Most websites recommend dividing *Thalictrum* in spring. Very few suggest sowing seed, perhaps it's not just me that has problems with them. So I will divide the original plant at least and try again with seed in the autumn. One does need to persevere and be patient. I can do the former but the latter is certainly not one of my strongest points. The other tempting option that I am currently managing to resist is a trip to the garden centre, after all it's good to support local businesses!

It's a good time to sow biennial and perennial seeds in June for flowering next year. I thought I might have a go at a gorgeous looking peachy foxglove, *Digitalis purpurea* 'Sutton's Apricot'. There is also a striking dark purple almost black hollyhock, *Alcea rosea* hybrid 'Black Knight' for a bit of wow factor and some more perennial wallflowers, *Erysium* 'Fire King' to replace the somewhat leggy ones that I grew a few years ago. All that colour, I think, is in response to the current lack of flowers in the garden due to the weather. Hopefully by the time you read this we will be heading into a flaming June!

Mary-Ann Driscoll



KILMINGDON GARDENING CLUB - UPDATE

We hope that you have managed to keep your gardening timetable up-to-date, bearing in mind that April was the coldest and driest for 60 years at least. As I write this the rain is torrential, with the stream through the village full. Maybe May will be the wettest for a while. The last month has seen some exceptional banks of daffodils, and magnolias, before the frosts affected their flower heads. Bluebells and wisteria are beginning to emerge, adding cheer as one walks around the village.

In April we organised an Open Gardens event, which is mentioned elsewhere. The committee has recently held discussions on the way forward, hopefully being able to run some of our activities over the next few months. All points were discussed and carefully considered, particularly the Government's Covid roadmap out and the lifting of restrictions on June 21st.

The Committee is, therefore, delighted to report that with luck we may be able to begin hosting talks in the Village Hall. If so, the first will be on **Friday, July 9th**. Members will be informed within the next few weeks of the process to apply for a seat, as restrictions may still be in place. With luck social distancing protocol may allow us to host more members.

A decision has also been made to hold a gardening show for **Saturday, 11th September**. There will be classes on display within the Village Hall. On the field there will be a variety of events, which a separate committee have begun to organise. We feel sure that after the last year of lockdowns, residents of Kilmingdon will welcome a boost to spirits and will support this event. Details will be conveyed once more planning is in place.

Gill Gibbs (Chair) and Committee

Vicary & Co
Chartered Surveyors & Property Agents Estate Agents & Valuers
Residential - Commercial - Rural

Thinking of selling?
Call us today to arrange a
FREE market appraisal of
your home.

Vicary & Co Estate Agents & Valuers
 5 South Street | Axminster | Devon | EX13 5AD
 01297 33449 | sales@vicaryandco.com | vicaryandco.com

Sales Manager Kelsey Lawrence
 Ian Vicary MRICS FISVA MARLA FAAV Pg Dip (Arch Cons) - Chartered Surveyor &
 RICS Reg. Valuer

FUNERAL DIRECTORS & MONUMENTAL MASONS

W. G. POTTER

Julian & Karen Hussey DipFD NAFD

~ a family business ~

Dignified, Professional & Caring

- Offices also at Bridport, Seaton, Honiton & Ottery St. Mary
- Pre-arranged & prepaid funeral plans

*Members of The National Association
 of Funeral Directors*

*Recommended by The Good Funeral Guide and
 The Natural Death Centre*

West Street, Axminster EX13 5NX

01297 34283

www.funeraldirectors.uk.com

A.G.M.

Axminster Garden Machinery

SALES • SERVICE • SPARES
 Independent Specialists



**FACTORY APPOINTED
 AUTHORISED DEALERS
 OF ALL POWER
 EQUIPMENT WE SELL**



Proper Horticultural Engineering since 1979

**Visit our
 well stocked
 showroom
 now**



**Always
 Great Deals
 Available**

Unit 1A Weycroft Avenue, Millwey Rise, Axminster, EX13 5HU
 Tel: 01297 631186
www.axminstergardenmachinery.co.uk

Lending with Heart and Mind

East Devon District Council fund a not-for-profit
 loan scheme for homeowners and landlords*.

We understand the expense of maintaining your
 home and we work with you to take the stress out
 of funding repairs, improvements or adaptations.

We see you as an individual, not a credit score.
 Our knowledgeable team of advisers will guide
 you through the process of applying for a home
 improvement loan.

For a no-obligation assessment
 or more information visit
www.lendology.org.uk or call 01823 461099

Heatherton Park Studios, Bradford on Tone, Taunton, TA4 1EU

*subject to eligibility

HUMOROUS, BUT SOUNDS VERY FAMILIAR

With all of the discussion about wild flower meadows and verges you may enjoy this story which Anna Crabbe recounted during the Rogation service at Hampton Farm. Imagine a conversation between God and Saint Francis.....

God: Frank, you know all about gardens and nature, what in the world is going on down there on the planet? What happened to the dandelions, violets, daisies and stuff I started ages ago? I had a perfect no-maintenance garden plan. Those plants grow in any type of soil, withstand drought and multiply with abandon. The nectar from their long-lasting blossoms attracts butterflies, honey bees and flocks of songbirds. I expected to see a vast garden of colours by now. But, all I see are these green grass rectangles.

St. Francis: It's the tribes that settled there, Lord. The Suburbanites! They started calling your flowers 'weeds' and went to great lengths to kill them and replace them with grass.

God: Grass? But, it's so boring. It's not colourful. It doesn't attract butterflies, birds and bees; only grubs and sod worms. It's sensitive to temperatures. Do these Suburbanites really want all that grass growing there?

St. Francis: Apparently so, Lord. They go to great pains to grow it and keep it green. They begin each spring by fertilizing grass and poisoning any other plant that crops up in the lawn.

God: The spring rains and warm weather probably make grass grow really fast. That must make the Suburbanites happy.

St. Francis: Apparently not, Lord. As soon as it grows they cut it, sometimes twice a week.

God: They cut it? What and then bale it like hay?

St. Francis: Not exactly, Lord. Most of them rake it up and put it in bags.

God: They bag it? Why? Is it a cash crop? Do they sell it?

St. Francis: No, just the opposite. They pay to throw it away.

God: Now, let me get this straight. They fertilise grass so it will grow. And, when it does grow, they cut it off and pay to throw it away?

St. Francis: Yes, that's it.

God: These Suburbanites must be relieved in the summer when we cut back on the rain and turn up the heat. That surely slows the growth and saves them a lot of work.

St. Francis: You aren't going to believe this, Lord. When the grass stops growing so fast, they drag out hoses and pay more money to water it, so they can continue to mow it and pay to get rid of it.

God: What nonsense. Well at least they kept some of the trees. That was a sheer stroke of genius, if I do say so myself. The trees grow leaves in the spring to provide beauty and shade in the summer. In the autumn, they fall to the ground and form a natural blanket to keep moisture in the soil and protect the trees and bushes. It's a natural cycle of life.

St. Francis: You'd better sit down, Lord. The Suburbanites have drawn a new circle. As soon as the leaves fall, they rake them into great piles and pay to have them hauled away too.

God: No!? What do they do to protect the shrub and tree roots in the winter to keep the soil moist and loose?

St. Francis: After throwing away the leaves, they go out and buy something which they call mulch. They haul it home and spread it around in place of the leaves.

God: And where do they get this mulch?

St. Francis: They cut down trees and grind them up to make the mulch.

God: Enough, this is unbelievable - I don't want to think about it anymore. Now, Saint Catherine, you're in charge of the arts. What movie have you scheduled for us tonight?

St. Catherine: 'Dumb and Dumber', Lord. It's a story about...

God: Never mind, I think I just heard that whole story from Saint Francis!

Peter

WASP SOUNDS

I bought a record the other day from a second hand shop, it was called 'Sounds Wasps Make'. When I got home and played it I said to myself, "this doesn't sound anything like wasp sounds".

Then I realised I was playing the Bee side.

SUDOKU SOLUTION

2	4	8	7	3	6	9	1	5
1	3	7	2	9	5	6	4	8
9	5	6	8	4	1	7	2	3
8	1	9	3	5	7	4	6	2
4	2	3	1	6	9	8	5	7
7	6	5	4	2	8	3	9	1
5	8	4	6	7	2	1	3	9
6	7	2	9	1	3	5	8	4
3	9	1	5	8	4	2	7	6

As the days grow longer, brighter and certainly, in the last few days, a little warmer our thoughts turn once again to resuming our RBL events. However, before revealing our plans it would be remiss of me not to pay homage to our late patron, His Royal Highness, Prince Philip, Duke of Edinburgh; his selfless dedication and support were without doubt an inspiration to us all and he will be greatly missed.

As we go to press, we are keeping our fingers crossed that a new variant of Covid will not prevent us from resuming our activities. At our last committee meeting we all expressed a hope that we would soon be able

to meet in person rather than by 'Zoom' and reiterated our commitment to bringing us all closer together again as soon as the government guidelines permit. I can confirm that we are now planning to hold our RBL Centenary Family BBQ in and outside the Village Hall on Saturday, 24th July, so please make a note in your diaries. Notices will be posted, and tickets will be available from your 'shepherds/committee' soon!

We are also planning to resume our Friday 'Get togethers' and the first will be in the New Inn, Kilmington at 1800 (6.00 pm) on Friday, 2nd July, where we hope to see as many of you as possible. On other matters, we are now receiving weekly updates from County keeping us abreast of training opportunities and events happening elsewhere in the region. We have been requested by county to forward the updates to our members and John Watts, our membership wizard, has kept those of you on email up-to-date. We hope you feel the communications are worthwhile. If, however you feel that



they are too frequent or too much, please do not hesitate to let us know; we really would like your feedback.

As a branch we have been involved in several events; our Standard Bearer Richard Norman tolled a muffled bell and observed the two-minute silence to mark the funeral of the Duke of Edinburgh. At 9.00 am on Saturday, 15th May we laid a wreath at the War Memorial to mark the 100th anniversary of the Royal British Legion, which was part of a coordinated event across the country. On the same day Peter and Louise Wood braved the showers to man our new RBL cart at Millers Farm Shop and raised an incredible £178 selling the anniversary pins and other merchandise; our sincere thanks to James and Olivia and all at Millers Farm Shop for their assistance and support. If anyone else



would like to obtain the RBL anniversary pin, please do not hesitate to contact Peter, Louise or any other members of your committee. For those who would like to contribute ideas of how we might mark our own centennial of the erection of the War Memorial on Saturday,

7th May 2022, it is not too late to let us know.

Last but not least, please encourage those you know who may not be members to join us, or at least encourage them to join us at any of our events or gatherings, we welcome everyone!

Take great care and stay safe.

Cdr Staff Seward OBE RN Rtd
Chairman RBL Kilmington Branch
07799612557 – E-mail t60sas@hotmail.co.uk

THE TELEPHONE BOX LIBRARY - PLEASE PAINT ME!

Our goal is to get more used pre-loved books into the hands of more readers in our village. So thank you to all those who continue to donate books, we have a lovely selection of books for young readers at present. To keep us all safe, we will continue to quarantine books before we display them on the shelves, so please continue to contact Karen 35162 and she will kindly collect them. Thanks.



Can you help me please? I'm looking a little tired and need a spring clean.

It's now a while since I was spruced up and changed my job from phone box to library. I'm looking a bit dull and I've also got a small pane of my glass broken. It's not a big job – two or three afternoons, just a wash, a rub down in places and a coat of paint. I know they have got all the paint and glass, but they need someone to help do the job. Can anyone lend a hand please and get me back into top shape for my big anniversary next year?

Drop Peter Ball a line or give him a call and he'll tell you what's involved and help/advise. 07747 636810
pball@kilmingtonvillage.com

SAVING SPECIAL SPECIES PROJECT

JUNE 2021 EVENTS

Grey Long-eared Bat Project – Meadow Magic Walks

The Grey Long-eared Bat, one of the UK's rarest bats feeds in wildflower meadows. Over 97 % of wildflower meadows have sadly disappeared since the 1960s, hence the dramatic impact too on the numbers of this bat. Meadow-owners in East Devon and West Dorset, where the project is taking place, are generously allowing us access to explore and enjoy these amazing havens for wildlife.



The project is also working with landowners to increase and encourage meadow restoration and creation and also bat-friendly wildlife gardening with the wider public.

Hunting at night, they feed on moths, craneflies and small beetles. These insects are mostly found on meadows which are full of wildflowers with their nectar sources that the insects feed on. The key then to caring for this bat is to maintain as many wildflower meadows as possible around their roosts and to enhance the wildflower interest of other fields. As well as supporting a diverse wildlife from insects to birds of prey, they are also enjoyed by us - valuable too for our mental health and well-being - walking through a meadow in full bloom in early summer is a magical experience. They are a riot of colour and alive with the buzz of insects. We've organised a series of guided meadow walks to do just that – a chance to wander and loiter in these stunning places and be inspired! Bring your camera, notebook or sketch pad to capture this special place or just

sit and soak in this glorious scene. Free events. Limited numbers, booking essential.

Meadow Magic Stroll, Bolshayne Farm, nr Colyton Saturday, 5th June, 2.00 pm – 3.30 pm

Meadow Magic Stroll, Hogchester Meadows, nr Charmouth Thursday, 10th June 6.30 pm – 8.00 pm

Meadow Magic Stroll, Lucehayne

Cottage Meadow, Widworthy

Sunday, 13th June 2.00 pm – 3.30 pm

Meadow Magic Stroll, Golden Cap Estate Meadows, Charmouth

Saturday, 19th June 2.00 pm – 4.00 pm

FREE EVENTS (except Hogchester £4 adult, £1 child charity donation to Edith's Hope Ugandan Farming Project).

Limited places - booking essential – location details on booking.

For further details and to book contact:

Ruth Worsley, Wildlife Engagement Officer, East Devon

AONB: savingspecialspecies@gmail.com

01297 489741: 07765 126 565

This project is funded through the government's Green Recovery Challenge Fund. More information: Saving Special Species

Grey Long Eared Bat Project

AXMINSTER AND LYME CANCER SUPPORT

www.axminsterandlymecancersupport.co.uk

www.facebook.com/axminsterandlymecancersupport.co.uk

Tel: 07512 279663

Email: info@axminsterandlymecancersupport.co.uk

Mailing address: Axminster and Lyme Cancer Support, Heathermoor, Yawl Hill Lane, Yawl, DT7 3RW

In the latest ALCS newsletter (no.32) it is stressed that nobody wishing to receive the newsletter or access their services is limited to using email. They are very willing to post it out to you and their phone number is also available. At the moment they are hoping to have more face-to-face events as restrictions are lifted, but will continue to provide online support where it is wanted. They have a new therapist, Nadiya Wynn, who offers therapeutic yoga and mindfulness to restore physical, mental and emotional wellbeing. She does one-to-one sessions, short courses or monthly sessions, online or in person. There is a new 'What's App' group to enable clients to meet and chat. The

two Nordic walking instructors have started, one offering sessions for beginners or as tasters, the other arranging regular walks.

Of particular concern this month is Bowel Cancer, which is treatable and curable if diagnosed early, but far more serious if lack of awareness causes it to be left too late.

There is also an invitation to those living with a cancer diagnosis who feel the need to enhance their resilience, rediscover strengths and increase their ability to cope to join an online self-management programme called iHOPE.



www.hunthay.co.uk

Secure Containerised Self Storage

Suit Business or Domestic use

Caravan + Motorhome Storage

Industrial + Starter units

Easy, long day & weekend access

Owner lives on site

Close to A35

jenny@hunthay.co.uk

Phone: 01297 33839 / 07779 550771

Tim Whitehead

**Lyme and Axe Vale Property
Caretaking and Maintenance.
Interior, Exterior, Home and
Garden.**

**Repairs, Decorating, Handyman
and Gardening Services.**

**Honesty, Reliability and Value
Guaranteed.**

**DBS Checked, Fully Insured
and LOCAL.**

(01297) 33023 or 07967 915302

axevalehandyman@btinternet.com



musicseeds



This music class in Colyton, is perfect for children aged 1 to 3. Run by a teacher and musician, it is a great grounding in music for the little ones, and also lots of fun!

Singing, games, movement,
playing percussion.

9.30 – 10 am, Thursday

Reece Strawbridge Centre, Colyton

See musicseeds.co.uk for more details

Or contact Leah Stonex on
07850 157520

leah@musicseeds.co.uk



TREELINE
Arboriculture

Environmentally Sustainable Tree Surgery

Friendly &
Kilmington Based

Environmentally
sustainable

Fully insured &
City and Guilds qualified

Quiet, up to date
practices

07754 582 112 | treelinetom@gmail.com





Are you worried about your Tax Returns?

We provide a friendly, professional service for self assessment returns, business accounts and all aspects of taxation based on experience, qualifications and confidentiality.

HOME VISITS AVAILABLE

For an initial free meeting please telephone our office and ask to speak to Hayley Perham (Taxation Director) or email: crwaccountants@btconnect.com

Telephone 01297 553286

The Personal, Professional approach to Taxation, providing "Peace of Mind"

CRW Accountants Ltd
The Mews, Queen Street, Colyton, Devon
EX24 6JU
www.crwaccountants.co.uk

Stuart's Sweeping Service

Your local chimney sweep



07432 118318 or 01404 831288

Evening and weekend appointments available.

CLIMAX
DOORS & CONSERVATORIES
ESTABLISHED 1979

INSTALLERS OF QUALITY
WINDOWS



YOU deserve the very best
so choose a
Quality made product from



CLIMAX WINDOWS
The No: 1 local company

FREE PHONE 0800 71 63 63
SHOWROOM CASTLE HILL WORKS
CASTLE HILL AXMINSTER 01297 35053
ALSO TILES AND CONSERVATORY FURNITURE

KILMINGTON CROSS SERVICES (PETROL STATION)

Tel. No: 01297 631089

MILK : NEWSPAPERS : HOT SNACKS :
GROCERIES
HOUSEHOLD ITEMS:
COAL: CALOR GAS
PHOTOCOPYING : OFF LICENCE
PAY POINT : E-TOP UP: GAS & ELECTRIC:
JET WASH

OPENING HOURS

Monday-Saturday 6.00 am - 10.00 pm
Sunday 7.00 am - 10.00 pm



Kilminster, Axminster

- Coffee, Latte, Cappuccino, Tea and all type of drinks
- Variety of Cakes
- Breakfast available all day, prices start from £5.95
- Starters and Main Meals
- Desserts and Ice Creams



- Every Sunday Carvery £10.95
12.00pm until 3.00pm



- B&B Rooms available
- Single, Double, Twin & Family Rooms
- All rooms are En-suite
- Rooms available from £49.00



- Function Room – Free of Charge



Call 01297598060



Based in Kilminster & providing all aspects of **Repair, Refurbishment & Renovation.**

Including (but not limited to!):

- ✓ General Building Repair and Maintenance
- ✓ Bathroom and Kitchen Remodelling
- ✓ Interior and Exterior Decorating
- ✓ Regular Garden Maintenance
- ✓ Landscaping and Minor Construction
- ✓ Flat-pack Construction (no more frustration!)
- ✓ A lot more - just ask!

Call **Simon** on **07939 242 101** or email **simon@bpmaintenance.co.uk**
www.bpmaintenance.co.uk

"A friendly and efficient service, available in East Devon and West Dorset"

§Khushi Kitchen

Fancy a **HOMEMADE** local curry?

Then why not try a §Khushi authentic curry experience.

- ❖ Kilminster's Friday curry takeaway
- ❖ Fresh Frozen Curries available **EVERYDAY** @ The Old Barn (honesty box system)
- ❖ Catering for all occasions, please enquire for a personalised menu

Email: mina@khushi.kitchen

Web: <http://khushi.kitchen>

Addr: The Old Barn, The Street, Kilminster EX13 7RJ
 khushi kitchen-axminster devon & dorset



Check the website regularly for §Khushi's future events and pop-up kitchens.

Mina x



GreenBee Adventures

Outdoor learning sessions



- Baby Bear hunt
- Forest school
- Bug school
- Forest Art
- Woodland play
- Wildwood seniors
- Team sessions
- School sessions

GreenBee Adventure sessions tailored for all age groups in Kilminster.

Call **Heather** on **07859 943 768** or email **heather@greenbeebugs.co.uk**
www.greenbeebugs.co.uk

Are you Spring ready?

Advice

Sales

Service

Rob Perry
Garden Machinery

Lawn Mowers & Power Equipment

Raymonds Hill EX13 5ST

t: 01297 631314

e: sales@robperrygardenmachinery.co.uk

www.robperrygardenmachinery.co.uk

Authorised
Dealers for



AXMINSTER PRINTING CO LTD

TEL: 01297 32266

Not just a Printing Company....

Established in 1969



Printing & Design Services

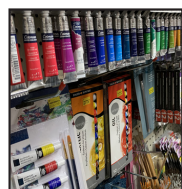
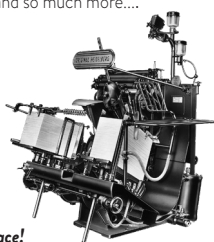
Leaflets, Posters, Booklets, Books, Labels, Tags, Menus, Banners, Magazines, Canvases, Order of Services, Headings, Business Cards, Appointment Cards, Compliment Slips, Headed Cards, Bookmarks, Invoice and Order Forms, Delivery Forms, Folders, Vouchers, Loyalty Cards, Wedding and Business Stationery, Plans, Prints (any Size up to A0) and so much more....



Stationers

- Student Essentials
- Computer Inks & Toners
- Business Machines
- Packaging Supplies
- Filing Products
- Office Stationery

All your stationery needs on one place!



Art & Craft Supplies

- Art supplies for the student or hobbyist
- Card making materials
- Lots of craft products and activity sets for children



Website: www.axminsterprinting.co.uk Email: sales@axminsterprinting.co.uk

Address: Axminster Printing Co. Ltd. West Street, Axminster, Devon EX13 5NU

Vintage Engineering

An engineering company with a difference, We cater for the one offs and bespoke items, in Metal (welding and fabrication) wood, and mechanical objects.

We restore Vintage/Classic cars and motor bikes, M.O.T Welding, repair gates, stairs, individual items, make new objects in steel, stainless and aluminium and manufacture or repair wood and mechanical items.



Do you have those broken or damaged objects that you need repairing or replacing that will not cost the earth, and those home repairs or builds that no one seems interested in, we can give you a cost to do those things you just want sorting.

Call 07917765978 –

Whitchurch Canoncorum

vintageengineering.co.uk

Chris Stubbs Electrical

Est 1981

OFFICE ADDRESS: UNIT 2,
THE ASSEMBLY ROOMS,
GUNDRY LANE, BRIDPORT,
DORSET, DT6 3RL

Bridport Office No. 01308 422726

Kilminster Home No. 01297 631244

Mobile No. 07836 247294

email: StubbsChris@hotmail.com

“For a friendly service
at a competitive price call us today”



GREEN MACHINES

Mobile Garden Machinery Repair

FORMERLY DAVID GEAR HORTICULTURAL

Oliver Newton

Service & Repair of all
Garden Machinery

Call Oliver Today!
01297 23913



KILMINGTON PARISH COUNCIL

Coronavirus Neighbourhood Support Group

The Kilmington Village Website continues to provide links to the latest National and local information.

COVID-19 Remains a Part of Our Lives

As we move through the government's four-step roadmap which offers a route back to a more normal life, we must all remember that:

We are going to have to keep living our lives differently to keep ourselves and others safe.

Please comply with all the COVID-Secure measures that remain in place.

We must carry on with 'hands, face, and space' – Maintain social distancing.

The virus transmits really well indoors, so staying outside and keeping two metres apart is absolutely crucial to try to reduce the risk of transmission.

Get tested when needed.

Get vaccinated when offered.

If we all continue to play our part, we will be that bit closer to a future that is more familiar.



Home Sweet Home
Reliable, Friendly Cleaning Services
Domestic Dwellings to B&B and
Holiday Accommodation

10 Years' Cleaning Experience
Call Helen on 07752081433
Elderly Friendly

PETS

DEBONAIR DOGZ
Professional Dog Grooming Services
Please call Debbie Woodhouse to discuss
your pet's individual requirements
Tel 01404 831 438 Mobile 07966 250441
Offwell Nr Honiton

Member of and Professionally trained by a school recommended by the British Dog Grooming Association

Malcolm Gill Machinery

Old Cider Lodge Workshop
& Apiary

Kilmington EX13 7SW

www.Malcolmgillmachinery.co.uk

Mower Repair and Servicing
Tool sharpening and welding
Hedge and tree management with commercial chipper
Free local collection and delivery
Contact Malcolm: 0777 1902143




Old Cider Lodge Honey: sarabees@outlook.com
Homemade preserves and gift honey hampers
Available from our stall

MIKE WALLER
OIL HEATING SERVICES
Experienced Engineer

Servicing Breakdown and Installations
AGAS Rayburns
and
Oil Boilers

Tel 01308 427638 Mob 07875 624 088



MNR MOWERS LTD
Unit 8 Devonshire Court
Heathpark Industrial Estate
Honiton, Devon EX14 1SB

SALES SERVICE SPARES
Collection & Delivery in East Devon
For all types of Garden machinery
Tel 01404 548300 Fax 01404 548301
MNRMOWERSLTD@UNIT8.ECLIPSE.CO.UK

MOPS'Y MOPS
CLEANING & DOMESTIC SERVICES
SMALL JOBS TO
SPRINGCLEANS.

MATURE FEMALE CLEANER
CALL SADIE
0129734367
MOBILE 07779703388



WEEK TO VIEW (Events that happen the same time every week)

Monday	early	Your house	Recycling collections
Tuesday	10.00 - noon	The Beacon	The Post Office
Wednesday	9.15 am	The Beacon	Toddlers and Tinies
	10.00 - noon	St Giles' Church	Mums and Babies Support Group
Friday	10.00 - noon	St Giles' Church	Coffee and a warm welcome

DATES FOR JUNE 2021

Tues	1st	Early	Your House	Recycling only
Sat	5th	2.00 pm	Bolshayne Farm, Colyton	Meadow Magic Stroll - see page 20 for more information
Sun	6th	9.30 am	St Giles' Church	Morning Worship with Anna Crabbe
Tues	8th	Early	Your House	Garden Waste Collection
		10.00 - 11.15 am	The Beacon	Messy Sparklers
Wed	9th	7.15 pm	Village Hall	Community Cinema - '23 Steps'
Thur	10th	2.15 pm	Village Hall	Community Cinema - '23 Steps'
Thurs	10th	6.30 - 8.00 pm	Hogchester Meadows, Charmouth	Meadow Magic Stroll - see page 20 for more information
Sat	12th	All Day	Around the village	Kilminster and Shute Community Litter Pick
Sun	13th	2.00 - 3.00 pm	Lucehayne Cottage Meadow, Wilmington	Meadow Magic Stroll - see page 20 for more information
Mon	14th	Early	Your House	Landfill with recycling
Sat	19th	2.00- 4.00 pm	Golden Cap Estate Meadow, Charmouth	Meadow Magic Stroll - see page 20 for more information
Tues	22nd	Early	Your House	Garden Waste Collection
Sun	27th	11.00 am	St Giles' Church	Holy Communion with Geoffrey Walsh

AERIALS & CABLES


AERIAL REPAIRS & INSTALLATIONS

Digital Upgrade

FM • Multi-Points

Free Estimates

0781 4481 833



DONATIONS, PAYMENT FOR ADVERTISING SPACE AND ARTICLES/NOTICES FOR POSTSCRIPT (i.e. THOSE NOT SENT BY EMAIL)

It has been necessary to set up alternative arrangements following the closure of the village shop.

DIRECTIONS FOR FINDING Vicky Larcombe's house. Vicky is treasurer for Postscript.

From Whitford Road turn left and walk up The Street, passing Koppers, Kushi Kitchen, the Bull Pen and West Gate on your right. The next house is **Brookside** where Mrs Vicky Larcombe lives. If you find yourself crossing Meadow Bank, you have gone a few steps too far.

Please post payments for advertising in Postscript and donations to help with printing costs
through the front door of Vicky Larcombe's house. Thank you.

USEFUL TELEPHONE NUMBERS

VILLAGE NUMBERS

Bell-ringing - Celia Dunsford	01297 33563	Kilminster's Little Helpers - Sally Huscroft	01297 32243	Short Mat Bowls - Ron Foster	01297 35529
Bridge - David & Stephanie	01297 35033	Kilminster Pre-School - Now part of primary school	01297 32762	Sunday School	
Country Dancing - Gill Perkins - Marie Thorne	01297 32888 01297 33906	Kilminster Primary School	01297 32762	Table Tennis - Jenny Nickolls	01297 639758
Cricket - David Lavender	01297 631868	Millers Farm Shop	01297 35290	Tennis - Sue Moore Sue Wells	01297 32361 07912 272102
Footpath co-ordinator - Elaine Penzer	01297 34287	Moviola - John Watts	01297 639758	Village Hall bookings - Louise Quincey	01297 32358
Hitchcock Pavilion bookings - Peter Huscroft	01297 32243	The New Inn	01297 33376	Village 100+ Club - Jean Falconer	01297 33708
Kilminster A35 Pit Stop	01297 598060	The Old Inn	01297 32096	www.kilminstervillage.com - Luke & Maxine Lawson	07719 909532
Kilminster Cross Services	01297 631089	RBL - Jean Falconer - Sec Stafford Seward - Chairman	01297 33708 01297 33909		
KGC - Jean Falconer, Secretary	01297 33708	Scrabble - Sylvia Newbery	01297 34326		

MEDICAL AND SUPPORT

Axminster Hospital	01297 630400	'Devon Doctors on call' (Out of hours GP service)	0845 6710270	Veterinary Surgery	01297 630500
St Thomas Court Surgery	01297 32126	Dentist Helpline	03330 063300		

SERVICES AND FACILITIES

Refuse Collection	01395 571515	Axminster Library	01297 32693	Clerk to the Parish Council	07800 826657
Water - general - leaks	0344 346 2020 0800 230 0561	Mobile Library	01404 42818	E. Devon District Councillor - Iain Chubb	01297 35468
Electricity - emergency	0800 365 900	Ring & Ride	01404 46520	Devon County Council, Whimble and Blackdown, Iain Chubb	07932 459595
		Axminster Care Service	01297 35550		

Police: Crime stoppers - 0800 555111; Emergency - 999; General - 101

CHURCHES

St Giles' Church Pastoral teams	01297 33777	Baptist Church Office Pastor Darrell Holmes	01297 631638	Axminster Catholic Church Parish Priest: Father Anthony Cockram	01297 32135
---	-------------	---	--------------	--	-------------

ADVERTISING IN POSTSCRIPT

Postscript is published ten times each year and is delivered free of charge to every house in Kilminster. All advertising fees and donations to Postscript are used to meet the cost of printing. ALL advertisements which are set out, from any source, are chargeable as follows and must be paid for in advance.

	Black and white ads	Colour ads
Credit card (70 mm x 40 mm)	£ 5 or £22.50 for 5 months	
¼ page (90 wide x 136 mm high - Portrait)	£12 for one-off or £50 for 5 months	£15 for one-off or £75 for 5 months
½ page (184 x 136 or 90 x 276 mm)	£20 or £90 for 5 months	£30 for one-off
Full page (184 x 276 mm)	£30 or £130 for 5 months	£40 for one-off

If the advertisement could be sent as a jpeg it is a great help when sizing for publication.

BACK COVER: *Occasionally the back cover is available for a one-off colour page advertisement. Cost: £50*

Additional fee of £1 if Postscript has to edit, size or set copy.

PAYMENT: Cheques should be made payable to: Kilminster Postscript and posted to: **Mrs V. Larcombe, Brookside, The Street, Kilminster, EX13 7RJ.** BACS account name is **Kilminster Postscript**, sort code: **51.61.23**, account no: **18159400**

COMING AND GOING FOR A SONG: There is no charge for these entries for items valued up to £20 or less. However, donations are appreciated - these can be popped through Vicky Larcombe's door (please see directions on page 22).

Scarecrows

2021

