

# KILMINGTON POSTscript

Issue 241 March 2022

---





## EDITORIAL

Glaring errors seldom glare at us when we make them ourselves. We recently received a rueful compliment from a new advertiser who was hoping to add to his existing clients in Kilminster and only realised his error when a potential customer from here contacted him. The Kilminster he had intended was nearer to his home in Somerset. He admitted however that 'advertising in your magazine obviously works'.

In the 19<sup>th</sup> Century times were hard for many and justice even harder. There may well be some families in Australia today whose ancestors started life here in the village, became involuntary immigrants after a criminal conviction and either never managed to return or chose to stay. Could there also be an Australian Kilminster? Alan Clarkson looks at newspaper records of local court proceedings.

Over several years much work has been going on to arrive at a satisfactory plan for the future of our parish. All proceedings, consultations, summaries and eventually policies have to follow regulations set by Acts of Parliament, whose wording is devised by legal brains to prevent the possibility of loopholes through which they could be frustrated. The public has to be kept informed but, unless it is your passion, such documents often make dull reading and it is tempting to skip them. This time East Devon is giving us notice, as they must, that the Kilminster Parish Council, after consulting local residents, have put together a plan which will affect future planning applications and have submitted it to EDDC. But that is not the end of it. We all still have another opportunity, for a while, to read and comment on it. The 'Notice of Submission Consultation' tells you how. The Parish Council are also holding two village meetings to present and explain the plan and answer questions. See the back cover for dates.

As the page turns from winter to spring, plans for the new season are activated. St Giles' has notices about Mothering Sunday and flower arranging. There will be Lent lunches again this year. The Gardening Club looks forward to the first talk of the year in March, as well as the Plant Market and coffee morning in May, and is making preparations, including a seed swap. This month sees 'The Biggest Breakfast' in aid of Cancer Research and also the tenth anniversary of the 're-purposing' of the telephone box as a library in 2012. The RBL are gearing up not only to commemorate the unveiling of the War Memorial in 1922, but to play their part in celebrating an event much rarer than a blue moon, a royal Platinum Jubilee. It has never happened before and may never happen again.

Janfryd

Front Page and Centre Pages - Marie Gardner

## CONTRIBUTIONS TO POSTSCRIPT

Please remember to use the email address for Postscript:

**postscript@kilminstervillage.com**

*Alternatively, please give your item to any team member.*

***The closing date for submitting items for the April issue is 15<sup>th</sup> March 2022. All will be acknowledged. Please email or ring 01297 639115 if not acknowledged within 48 hours.***

## POSTSCRIPT TEAM

### Editor

Janfryd Gordon-Kerr 01297 639115  
janfryd@gordon-kerr.org.uk

### Team

Peter Ball 01297 32631  
mycraigdon@aol.com

Valerie Harding 01297 34206  
vharding38@gmail.com

Jill Collier 01297 32390  
summerleaze@hotmail.co.uk

Gill Heighway 01297 33951  
gillheighway@gmail.com

Marie Gardner  
m.gardner6819@gmail.com

Gill Perkins 01297 32888  
john.perkins444@btinternet.com

### Distribution

Diane Overton 01297 33569  
diane.overton@outlook.com

### Treasurer

Vicky Larcombe 01297 33858  
vlarcombe30@aol.com

### Postal address

The Granary, George Lane, Kilminster, EX13 7RT

Printed by Axminster Printing  
01297 32266

**Postscript** is published 10 times each year and is delivered free of charge to every house in Kilminster. Almost all items in the magazine come from the village community who are very supportive of the magazine.

The Postscript team are all volunteers and your donations, together with fees from advertisers, are used to pay for the cost of printing.

## DONATIONS

***Arrangements for donating to Postscript have changed as a result of the closure of the village shop. Please see page 22 for details. Donations to the middle of January came to £105.20. All donations go towards printing costs. Thank you for your continuing support.***

## ADVERTISING RATES

Please see inside back cover for details.

The average cost per 28-page copy of Postscript with several colour pages is 75p.  
Extra copies are available from Millers Farm Shop, where donations may be made.

**Disclaimers:** Items in this publication are the work of individuals and do not necessarily reflect the thoughts or opinions of the editorial team. The editorial team reserves the right to make small alterations to items submitted. Contributors are responsible for ensuring that parental permission has been obtained before pictures of children are submitted for publication.

The content of advertisements is not the responsibility of the editorial team. Queries should be addressed to the advertiser. This publication is online at [www.kilminstervillage.com](http://www.kilminstervillage.com). In addition, earlier issues will also appear online from time to time.

# NATURE NOTES

## ALL YOU WANTED TO KNOW ABOUT KILMINGTON SWARDS!

### WARNING - This is not an article about Spring.

Given that we can't depend on climate stability, and last April proved exceptionally windy and cold, all of May cool and damp – not fair to get our hopes up too soon!

Back to 'swards'. I once read out loud a poem about grass, (the audible groans from the other students didn't stop me admitting that I had written it!). A sward, for those not familiar with the word, is any kind of grassland. In Kilmingston we have private gardens, council lawns and pub gardens. There are also a cricket field, play area, road verges and the grassland in the cemetery. Our wonderful Parish Common and the agricultural fields that surround the residential village are larger areas. The NFU says we grow world class grass in the South West – pity we can't eat it!

What you've got in your lawn is a sward. If you've not tried to remove them, it is likely to have a variety of grasses, a few flowering plants, mosses, occasionally lichens if it's poor soil and undisturbed, and finally a few fungi. Mosses do particularly well at this time of year. It's the cold and increased light - February is often the month of mosses with minimal competition from the grass. (The same thing happens in woodlands). So it's not entirely to do with how a lawn is managed. If you have plenty of mosses at the moment they are also 'to be enjoyed'.

Our village 'grasslands' can say how we want people outside to see our village and ourselves. Some of us want our village

swards to look neat and tidy, others more messy, some want flowers in them - colourful and popular garden varieties or memorial flowers. Others prefer our rural village to have local wildflowers and look forward to the wildlife that will visit them. Management of swards can be a private matter or a communal council tax cost! We have to decide – ideally before the grass gets growing again. It needs temperatures regularly over six degrees.

So, looking forward to the year ahead, do try something new. It's Valentine's Day when I'm writing this – how about a heart-shaped taller sward in the middle of a shorter lawn in 'no mow May' or another pleasing shape? Introduce some very low-growing flowers in plugs in the shorter grass that's left – bees and butterflies will love them. These short swards can be great with the right, hardy flowers in amongst the grass. Solitary bees, beetles and ants also like the extra warmth the sun can bring. Even bolder, and if you're lucky, you could leave a meadow ant hummock in the middle! It can certainly become a talking point!

Any February sightings to tell me about, or any new management you're trying on your patch?

Do please let me know.

David Simpson  
01297 32694

Email: dts63allways@outlook.com

## THE QUEEN'S GREEN CANOPY

*The Queen's Green Canopy* (QGC) is a unique tree planting initiative created to mark Her Majesty's Platinum Jubilee in 2022 which invites people from across the United Kingdom to "Plant a Tree for the Jubilee".

The **Kilmingston Gardening Club** welcomes this opportunity to encourage everyone to plant a tree on their own land or in their own garden, if they have space. If you haven't already risen to the challenge, March is the latest time to plant bare-rooted trees, otherwise you could wait until October/November which is still in the Jubilee year. However, the timing of planting container-grown trees is flexible. We would love everyone to take a photo of their tree(s), send it to us (info@kvpa.com) and we will collect them all together and post them on our website (www.kilmingstongardenclub.co.uk) at the end of the year.

With a focus on planting sustainably, the QGC is encouraging the planting of trees to create a legacy in honour of The Queen's leadership of the Nation, which will benefit future generations.

As well as inviting the planting of new trees, *The Queen's Green Canopy* will dedicate a network of 70 Ancient Woodlands across the United Kingdom and identify 70 Ancient Trees to celebrate Her Majesty's 70 years of service.

It's a great idea so please get involved if you can! There is more information and advice on the QGC website: <https://queensgreencanopy.org/>.

Jean Falconer

## HEDGEHOGS

Snuffling through sedges on soft summer days,  
Sleeping securely through winter's cold snows,  
In springtime still sleepy, staggering slightly,  
And all through the autumn awake but morose.

Spines tipped with white and brown furry faces,  
Soft fuzzy feet and appealing black eyes,  
Living on voles and on mice and on fledglings,  
And other small mammals of suitable size.

Caroline Wells, Age 13

## KILMINGTON COMMUNITY CINEMA



### LITTLE WOMEN

(U) 2019

**Kilmington Village Hall**

**Wednesday, 9<sup>th</sup> February  
& Thursday, 10<sup>th</sup> Matinee**



Saoirse Ronan and Emma Watson head a terrific all-star cast in a wonderfully warm, funny and heartfelt version of Louisa May Alcott's coming-of-age classic.

There's nothing little about Greta Gerwig's rich, warm, bustling populated and passionately devoted new tribute to Louisa May Alcott's classic novel of sisterhood. She revives Little Women as a coming-of-age movie, a marriage comedy, a sibling-rivalry drama – and perhaps most interestingly of all, an auto-fictional manifesto for writing your own life.

Saoirse Ronan plays the fiercely opinionated and boundlessly energetic Jo, one of four teenage sisters increasingly faced with genteel poverty in 19<sup>th</sup> century Massachusetts.

As for the two most legendary characters: cantankerous and wealthy Aunt March is played by Meryl Streep. The handsome boy next door Laurie is probably in love with all four of the March girls, and this film shows how they collectively have feelings for him, combining sisterly protectiveness, intense crush, exasperated disdain and One-Directional fan worship.

Laurie is played by Timothée Chalamet. Surely, no other casting was possible. It is great to see Chris Cooper playing Laurie's kindly grandfather.

Wednesday Doors open 6.45 pm with the evening's entertainment starting at 7.15 pm and ending about 9.30 pm. Pre-booking is no longer required but is helpful for the organisers.

The Thursday matinee will have limited seating and require pre-booking. For these performances we ask that masks are worn until you are seated, and refreshments will be brought to you. We hope this will encourage those who need to take extra health care to feel confident that they can come along and enjoy a film and have a cream tea/ice creams/tea/coffee, during the interval. The cream tea must be booked when booking the seat. The doors open at 2.00 pm, the film commences 2.15 pm and ends about 4.30 pm.

Please state Wednesday or Thursday. Tickets Pre-booked £5 or £5.50 on door.

To Book: Tel: 01297 639758, leave contact details and booking will be confirmed, or email: [wattsjohn307@gmail.com](mailto:wattsjohn307@gmail.com)

See <http://www.kilmingtonvillage.com/moviola.html> for more information.

## PLANT MARKET AND COFFEE MORNING

This is your March reminder of the Kilmington Gardening Club's annual Plant Market, which is to be held on Saturday, 7<sup>th</sup> May from 10.00 am – 12.00 noon in the Village Hall.

We are inviting members and non-members to provide any perennials, rooted cuttings or plants from seed, as well as coming along to buy plants. Our usual bedding plants will be available, predominantly in red, white and blue, in anticipation of some lovely displays in your gardens for the Queen's Jubilee celebrations on the first weekend of June.

At this year's Plant Market, we shall also be running a 'Seed Swap'. Having encouraged club members to bring along excess seeds (flowers and veg) to meetings in February, March and April, we hope to have surplus for our plant market, for anyone to have and/or swap with any seed they have left over (whether it be own saved seed or commercial packeted seed).

Please come along. Refreshments will also be provided. Entry is free.

Jane Chalk



# WHAT'S ON IN MARCH

## KILMINGTON SKY AT NIGHT

**Venus** remains bright all month in the southern skies and is easily found.

**Mars** gets steadily brighter through the month in the south. Its orange/red colour helps identification.

**Saturn** becomes easier to see as the month progresses.

**12<sup>th</sup> Venus** is close to and above **Mars** in the southern sky.

**18<sup>th</sup> Full moon** sometimes known by American Indians as the Crow or Worm Moon.

**20<sup>th</sup> The March equinox** marks the first day of spring for anybody living in the northern hemisphere, and the first day of autumn for anybody living in the southern hemisphere. The word *equinox* is derived from the Latin words *aequus* (equal) and *nox* (night). Wherever you live on Earth, on the day of the equinox the Sun will rise due east on the horizon, and set due west.

**28<sup>th</sup> The moon, Venus, Saturn and Mars** grouped together in the very low dawn southern sky.

Peter

## KILMINGTON GARDENING CLUB

The Gardening Club talk programme for 2022 gets underway this month on Friday, March 11<sup>th</sup> at 7.30 pm in the Village Hall. The talk is titled 'Grow your own.'

Have you ever wanted to grow your own vegetables but are not sure where to start? This talk will help beginners, as well as the established grower. Great tips on growing, maximising space, combination planting.

Refreshments. All welcome. Non-members £3

Lesley Rew

## FIVE ALIVE OIL SYNDICATE

Please note that the March deadline for ordering oil falls on Friday, 25<sup>th</sup> March 2022 at 12 noon.

I invite orders for exact amounts, or if ordering a 'top up' or a filled tank then please let me have a pretty accurate estimate as to what quantity you require, with a minimum order of 500 litres in all cases.

Colin Stewart  
01297 792538

cogstewartcs@gmail.com  
cogstewart@aol.com

## KILMINGTON BRIDGE CLUB

After many years of running a very friendly and informal Bridge Club in the Pavilion in Kilmington, we have passed over the mantle to Eric Samways and Gill Bullock. The Club will be playing bridge on the first and third Monday of each month, starting on 7<sup>th</sup> March. Eric has asked me to put a little note in Postscript to attract some potential butterflies in the net! It may be that new people in the village might fancy a game of bridge. There is no membership fee, just a payment of £1 a session to cover the hire of the hall and heating. At the moment, erring on the side of caution, tea and biscuits are not provided, but that may change in the future.

If anyone is interested, they can contact Eric Samways at [esamways@hotmail.com](mailto:esamways@hotmail.com) or telephone 01297 24260 or Gill Bullock at [gillbullock@hotmail.com](mailto:gillbullock@hotmail.com) telephone 01297 647768 or 07931717920

A big thank you to everyone who has supported the club in the past and we wish Eric and Jill success in restarting Bridge in Kilmington.

Stephanie and David

## PARISH COUNCIL MEETING

The Parish Council meeting is on Monday, 14<sup>th</sup> March at 7.30 pm in the Village Hall.



**\* Don't Forget \***

British Summertime begins  
Sunday, 27<sup>th</sup> March at 1.00 am  
Clocks go forward by 1 hour

## MOBILE LIBRARY

Tuesday, 22<sup>nd</sup> March 2022 at 11.20 - 11.50 am The Street

## MESSY SPARKLERS

We have been so fortunate with the weather since Messy Sparklers came back after Covid closed us. It has been such a blessing being able to have some of our activities outside, both to the families, as they enjoy them and to us when we have to tidy up afterwards!

Our February and March activities are planned around Creation. So, in February we looked at the first four days, focusing activities on water, light and plants. Outside, the children played with soapy water and found toy vegetables hidden in pulses and rice. Those happy to brave the wet grass also played on some of the outside toys including various ride-ons.

Inside, the children used Playdough to make trees and flowers, potato-printed sun, moon and stars, made garden collages using pipe cleaners, stickers and Cheerios for soil and explored natural items (pine cones, stones, coconuts etc) with magnifying glasses. The dark den was out again with

light up accessories plus the play kitchen, Mega-bloks, baby toys and books.

We have a great team helping with the clear-up for lunch. After sorting the mess and setting out the tables and chairs, we even had time for a breather before story and song time finished. Not all the families stay for lunch, but for those who do it is a great opportunity to chat with other parents/carers.

Our next session is on **Tuesday, 1<sup>st</sup> March**. We start at 10.30 am and finish at 12.30 pm, and we ask for a donation of £2 for the first child plus £1 for each additional child which includes lunch for both the child and their adult. Booking is essential; if you aren't on our mailing list, please contact: [children.youth@beaconbaptist.co.uk](mailto:children.youth@beaconbaptist.co.uk) to receive a booking email. Remember to dress for mess!

Juletta Obudo



## ST GILES CHURCH ECO SECTION

It is our intention to Twin our Church Toilet as part of the Tearfund/Cord 'Toilet Twinning' Scheme. For a small donation of £60.00 this will enable a community in a third World country to have access to CLEAN water, to be provided with Education, to be able to build a Toilet and to have basic hygiene training. If you would like to make a donation towards this scheme then please contact Reverend Julie, Steve Lomas or Christopher Thorne who would be able to advise how best to donate.

We would like to encourage all others, whether as individuals or as part of a Church Community, to look into this scheme and to decide if it is a scheme that they would like to support.

Please look into the WWF's Annual Earth Hour, which, takes place on Saturday, March 26<sup>th</sup> at 8.30 pm (British Time). This is an annual event where millions of people across the world show their support for our planet, raising awareness of nature loss and climate change which are considered to be the two biggest threats facing our shared planet.

Please join me and my family, and millions of others, by ensuring that non-essential lights are turned off at 8.30 pm on the last Saturday in March for one hour. This is to show our support for a healthy planet and to encourage others, including World Leaders, to think about the power we use and how we should use it responsibly. If you feel that you can go further and turn off other non-essential energy hungry appliances then this will surely make World Leaders see how we all care about our planet with this special one hour of low energy use. Please do not turn off fridges or freezers – non-essential appliances only are to be turned off.

We are currently looking to install bird boxes, bat boxes, bug houses and hedgehog houses on St Giles' Church land. This is to provide nice homes for these small animals with whom we share this wonderful planet. If anyone would like to help with this or has any advice then, again, please contact Reverend Julie, Steve Lomas, Christopher Thorne or John Thorne.

Christopher Thorne

Rev Julie Lomas  
St Giles' Church  
Kilminster  
01297 35004  
07488 278 483  
revjulielomas@gmail.com



## Letter from the Churches

Pastor Mike Hudson  
KBC Church Office  
Kilminster  
07957 738 211  
mike@beaconbaptist.co.uk

### A SONG FOR EVERY SEASON

Music and song have a special way of speaking to our hearts. They can stir emotions and feelings that words cannot. I'm sure we all have songs that are important to us, or songs that transport us back to particular times in our lives. Some songs help us to celebrate good times, some songs have offered us deep comfort in difficult moments. Songs help us to express feelings we don't have the words for ourselves.

As a church community we are currently exploring the book of Psalms together. It's an amazing book of the Bible. The Psalms are the songbook and the prayer book of Scripture. They've inspired art, poetry and music ranging from classical to hip hop.

The Psalms are stunning. Through them God gives us songs and prayers for every season of life. There are Psalms expressing joy, praise, thankfulness, wonder and confidence. But there are also Psalms expressing doubt, fear, frustration, anxiety sorrow and lament. It has been said that there is not a human emotion that is not expressed somewhere in the Psalms.

I think this tells us something very important about God. He wants to connect with us no matter what we are going through in life, whether we are in good times or bad, whether we feel close to Him or far away. Isn't it amazing that God doesn't just want us to come to Him in every and any situation, but he also gives us words to use when in our celebration or struggle we don't have the words ourselves?

We are invited to celebrate using Psalm 95; *'Come, let us sing for joy to the Lord; let us shout aloud to the Rock of our salvation'*. We can find comfort in difficulty through the words of Psalm 23; *'Even though I walk through the darkest valley, I will fear no evil, for you are with me'*. We can look upon the beauty of creation and say with the wonder of Psalm 8; *'When I consider your heavens, the work of your fingers ... what is mankind that you are mindful of them, human beings that you care for them?'* Or we can cry out in lament using Psalm 13; *How long, Lord? Will you forget me forever? How long must I wrestle with my thoughts.'*

I'd encourage you to discover (or rediscover) the power and beauty captured in the Psalms yourself. Let them bring peace and comfort to your heart, and take time to be still in the busyness of life. We currently have a prayer and reflection space in the Beacon set up to facilitate that for the community. This includes some interactive stations to help you settle your mind and reflect or pray. Feel free to pop in and use it.

But most importantly, know that whether the song of your life right now is one of joy or lament, that there is a God who knows you. A God who loves you. And a God who is with you.

Mike Hudson

### LENT LUNCHES

It has been decided that these very popular Lunches are to be served in The Kilminster Cricket Pavilion this year on every Thursday during Lent.

The first one will be on Thursday, 3<sup>rd</sup> March and thereafter on 10<sup>th</sup>, 17<sup>th</sup>, 24<sup>th</sup> and 31<sup>st</sup> and on 7<sup>th</sup> and 14<sup>th</sup> April at 12.00 noon. The simple meal will consist of delicious homemade Soup and Rolls followed by Cheese and Pickles, Teas and Coffee. Charge £5.

In the past the proceeds, after expenses, have gone to a charity such as ShelterBox, Tear Fund or Embrace. This is a chance to meet friends face-to-face once again and help those in need.

Diana Mellows



### SUDOKU CHALLENGE

Level: Hard

To solve this puzzle, each 3 x 3 square, row and column must contain all of the numbers 1 to 9. The solution is on page 22.

2							9	5
		7	5					
				3			8	4
		6			1			
	2			9			3	
			7			5		
9	3			2				
					4	1		
5	8							6



## BRITAIN'S BIGGEST BREAKFAST

**Saturday, 12<sup>th</sup> March 2022**  
**Kilminster Village Hall**

**starts 9.00 am**



**last orders  
12.00 noon**

**Full Breakfast: £7.00**

(coffee/tea; juice; fruit salad; cereal; sausage, bacon, egg, tomato, mushroom; toast/jam/marmalade)

**Light Breakfast: £3.50**

(coffee/tea; juice; fruit salad; cereal; toast/jam/marmalade)

**Morning Coffee: £2.50**

(coffee/tea with cake)

\* Cake stall and tombola \*



**Age 5 and under free**  
**Age 11 and under half price**

**DO COME AND JOIN US**  
**TO SUPPORT CANCER RESEARCH UK**

Further information, please contact: 01297 639758  
GIFT AID ENVELOPES AVAILABLE

Cancer Research UK Registered charity number: 108 9464

## EASTER LILIES

After an absence of two years, we are happy to say we will be using lilies to decorate St Giles' Church in Kilminster for Easter. We will also display the 'Memory Scroll' with names of our loved ones.

If you would like to add a name to the list and/or donate to the cost of the lilies, please contact Jenny Nickolls on 01297 639758 or Angie Clark on 01297 35817.



## FLOWER ARRANGERS' COFFEE MORNING AT ST GILES CHURCH

A Coffee morning for St Giles' Church flower arrangers will be held on Thursday, 17<sup>th</sup> March at 10.30 am. The event is to arrange the rota for the coming church year and for the decoration of the church for the Queen's Platinum Jubilee.

Anyone interested in joining the flower arranging team or willing to help will be very welcome to join us for coffee and cake.

Contact Jenny Nickolls on 01297 639758 or Angie Clark on 01297 35817.

**Mothering Sunday  
Service**  
**March 27<sup>th</sup> 9:30am**  
**St Giles Church**  
**Kilminster**



**All welcome.**  
**Talk by a Children's Society**  
**representative.**



**Are you ready to give outdoor BOWLS a go?**

**Chardstock Bowling Club Open Day 2022**

**Sunday 24th April 2022 at 2.00pm**

A warm welcome awaits equally to experienced and novice players, and those completely new to the game.

Come and enjoy this low impact, therapeutic exercise in a friendly, relaxed atmosphere, overlooking our beautiful Devon countryside.

Just wear flat shoes/trainers, and we will provide all the rest of the equipment.

Refreshments will be available.

If you can't make the April date, come along on our **Big Bowls Weekend 2022** event on **Sunday 29th May**, from 11.00 am onwards.

For further details visit our website: [www.chardstockbowlingclub.com](http://www.chardstockbowlingclub.com) or our Facebook page.

Alternatively email: [secretary.chardstockbc@gmail.com](mailto:secretary.chardstockbc@gmail.com) or phone Gill Campbell, the club captain, on 07763 483292.

**We look forward to seeing you.**  
**All ages and abilities welcome!**





## ENCOURAGING DISABILITY INCLUSION IN CHURCHES

Hello, my name is Elana-May. Some of you know me if you live in Kilmington. I am 20; I have autism. For some people it may be easy to understand; some other people might find it hard to understand. I was deeply moved by the ministry 'Through the Roof'. They are a registered charity that helps transform lives through Jesus with people who are disabled!

Quite often we read in the Bible how Jesus transformed the life of a disabled person. He walked alongside them, healed them physically and spiritually restored them too.

In the UK today there are 12 million people like myself who are living with a form of disability, whether physical or mental. We are often overlooked and we have less access to education, transport and housing, but Jesus can still use us for his glory! That's why 'Through the Roof' are helping to bring awareness of Disability to Churches. As we all know, we have had the arrival of Rev Julie and her equally amazing husband, 'Uncle' Steve Lomas. They have been an incredible support to me over the months they have been here and made me feel included and a part of St Giles'. They have had experience in the past of fostering and ministering to those who have



*Rev Julie Lomas, Elana-May Blackmore and Steve Lomas with the Luke 5 Award at Dalwood Church on Sunday, February 6<sup>th</sup>*

additional needs. I thought I would encourage them by nominating them for a Luke 5 Award. They duly received their award via the post.

The award is based on Luke 5:17-19. One day Jesus was teaching and Pharisees and teachers of the law were sitting there. They had come from every village of Galilee and from Judea and Jerusalem. And the power of the Lord was with Jesus to heal the sick. Some men came carrying a paralysed man on a mat and tried to take him into the house to lay him before Jesus. When they could not find a way to do this because of the crowd, they went up onto the roof and lowered him on his mat through the tiles into the middle of the crowd, right in front of Jesus.

This award helps others realise that there are some people in the church willing to break past barriers, physical and invisible. You can find more at: <https://www.throughtheroof.org>

Elana-May Blackmore

## LOVE WAS IN THE AIR AT ST GILES

Caring and Loving one another was the theme for the Celebrate Service in St Giles' Church on Saturday, February 12<sup>th</sup>. Gill Heighway led the service. Large red hearts were everywhere there was a flat surface, even on the tea tables. There was definitely a bit of St Valentine's Day there too!

To illustrate what Jesus meant when he instructed his followers to 'love your neighbour,' he told the parable of the Good Samaritan. In the 'Open The Book' story Bob Hartman has called it 'The Kind Stranger' and Anna Crabbe read this aloud, and with Christine Thorne as the narrator, the Celebrate Team donned costumes and acted out the drama to the delight of everyone.



*Joshua Cox with triangle*

helped with, and came to the service. The next Celebrate Service will be on Saturday, April 9<sup>th</sup> in St Giles' at 3.00 pm. There will be an Easter Theme and a warm welcome for anyone who feels in need of company or has special needs. See you there next time.

Diana Mellows



*Elana-May Blackmore, Greta Lidster, Jenny Carte, Anna Crabbe, Diana Mellows, Christine Mills and Christopher Thorne were the Celebrate Team that donned costumes for the story of the Kind Stranger*

The Service follows a set pattern of songs and prayers. Margaret Hurford provided spirited piano accompaniment to the lovely songs with Elana-May Blackmore providing excellent signing from the front. A short talk about the importance of caring in our community was given by Christine Thorne and Christine Mills had prepared some beautiful prayers for all carers and helpers and those in need.

To round off the happy occasion, Barbara Woodsford and Val Harding, with the help of Sheila Hill and Pearl Hurford, had prepared a splendid tea for everyone at the back of the church. A Very Big Thank You to them and to all who led,

## KILMINGTON NEIGHBOURHOOD PLAN – UPDATE

You will see opposite a notice from East Devon District Council. This confirms our Neighbourhood Plan has been received, complies with the regulations and has now been published for consultation. The notice tells you where you can view documents and how you can comment on the plan.

If you have already submitted comments to us, as part of the Regulation 14 consultation, you will find the Parish Council responses to these comments in the document titled 'The Consultation Statement'.

In April, EDDC will appoint an external examiner to examine the plan and any comments made during this final consultation. When the plan is approved by the examiner, residents of Kilmingdon will be asked to vote for or against the plan in a referendum.

We are therefore organising two public meetings to present an outline of the plan and the reasoning behind the policies. We will discuss what Neighbourhood Planning can and cannot achieve and what your parish council has submitted and why. There will also be an opportunity to ask questions. We hope this will further improve the understanding of the programme.

We hope to see you at the Village Hall on:

**Sunday Evening, March 6<sup>th</sup> at 7:00 pm or**

**Monday Morning, March 7<sup>th</sup> at 10:30 am.**

Kilmingdon Parish Council

## MARCH 25<sup>th</sup> - LADY DAY

### THE FARMING, FINANCIAL AND TAX YEAR?

At the end of this month we celebrate Lady Day, commemorating the tradition of Archangel Gabriel's announcement to Mary that she would give birth to the Christ. It is one of the four Quarter Days which were once significant dates in our year. Much of their significance has now been lost. However, they date back to at least the Middle Ages and were once the dates on which rents were due, servants were hired and school terms started.

When few people had calendars these four religious festivals, roughly three months apart and close to the two solstices and two equinoxes, conveniently divided the year into quarters.

~ 25<sup>th</sup> March - Lady Day, Feast of the Annunciation

~ 24<sup>th</sup> June - Midsummer Day

~ 29<sup>th</sup> September - Michaelmas, Feast of St Michael & All Angels

~ 25<sup>th</sup> December - Christmas Day

Lady Day was a traditional day on which year-long contracts between landowners and tenant farmers would begin and end; Farmers' time of 'entry' into new farms and onto new fields was often on this springtime day.

From 1155 until 1752 Lady Day was New Year's Day, the first day of the civil year in England, Wales, Ireland and the British dominions (but not Scotland). So our New Year used to begin on March 25<sup>th</sup>.

And you may well have wondered why the financial and tax year ends on what appears to be another random date - April 5<sup>th</sup>. Well, it's because in 1750 we adopted the Gregorian calendar and to align with Europe we advanced our calendar, and Lady Day by eleven days. So the tax year moved and April 5<sup>th</sup> is still sometimes known as 'Old Lady's Day'.

When the British government decided to skip these eleven days, many people mistakenly believed that their lives would be shortened by eleven days, as 1751 was a short year lasting just 282 days!

Peter

## KILMINGTON FLOWER SHOW

After two years of restrictions the Kilmingdon Gardening Club is pleased to announce that on Saturday, 23<sup>rd</sup> July the Annual Flower Show will be back with its full programme of flower, vegetable and craft classes.

More details to follow in future Postscripts.

Lesley Rew

## VILLAGE HALL '100+' CLUB

### The winners of the draw held on 31<sup>st</sup> January, 2022

D Fudger	£30	P Huscroft	£5
J Jolley	£15	H Cromey-Hawke	£5
P Guy	£15	L Stonex	£5

For further details, please contact  
Jean Falconer - 01297 33708





## NOTICE OF SUBMISSION CONSULTATION

### Kilminster Neighbourhood Plan

Under the Neighbourhood Planning (General) Regulations 2012 and the Localism Act 2011, Kilminster Parish Council have prepared a Neighbourhood Plan for the parish of Kilminster, with the help of the local community. The plan sets out a vision for the future of the parish and planning policies which will be used to determine planning applications in the area.

The Plan has been formally submitted to East Devon District Council as the Local Planning Authority. Comments are invited on the Plan under (Regulation 16) Submission Consultation.

The consultation runs from **9th February 2022** to **midnight 30th March 2022**.

### Where to View the Plan

Copies of the Neighbourhood Development Plan and supporting documentation are available to view on the [Neighbourhood Planning pages](#) of the East Devon District Council website, as well as on the [Kilminster Village website](#). Hard copies of the documents are available to view at Axminster Library (South Street, Axminster, EX13 5AD) and various venues within Kilminster parish (St Giles Church; The Beacon Centre and the telephone box library).

Hard copies can also be viewed **by appointment only** at the District Council Offices at Blackdown House, Border Road, Honiton, EX14 1EJ. Alternatively, if required, copies can be sent on request. Contact: [planningpolicy@eastdevon.gov.uk](mailto:planningpolicy@eastdevon.gov.uk) / 01395 571740.

### How to Make Comments

If you would like to make a representation on the Plan, please send your comments by 30<sup>th</sup> March 2022, to [planningpolicy@eastdevon.gov.uk](mailto:planningpolicy@eastdevon.gov.uk). A comments form is available on the website and in hard copy as above. Comments can also be sent by post to: Angela King, Planning Policy Team, East Devon District Council, Blackdown House, Border Road, Honiton, EX14 1EJ. Please indicate within your response if you wish to be notified of our decision.

### How we will use Your Information

Your representations will be recorded electronically and published on our website, including your name and address. Other personal contact details will be removed before publishing. We will use the information you supply for the purpose of producing the neighbourhood plan and may inform other Planning Policy work. Your information will be held securely and will not be retained for any longer than is necessary. Please see the [Neighbourhood Planning Privacy Notice](#) on our website for more details at <http://eastdevon.gov.uk/privacy>.

## 2022 AND SLOW – HALF STEAM AHEAD!

Welcome to another update from Kilmingtton RBL and our plans for 2022. Most of you will have already guessed that it is going to be a busy year, especially with our own centenary celebration commemorating the erection of the War Memorial in May and then, in early June, the Queen's Platinum Jubilee. This is in addition, of course, to our normal annual programme. Since our last update Jean and I attended the Devon County Annual Meeting where we were able to meet and question the current National President of the RBL, Lt Gen Bashall CB CBE; suffice it to say there were some very interesting questions!! We have also held our first 'face-to-face' committee meeting, where we confirmed the events for the year (please see below). Although the dates are confirmed, the final details for each event, timings, venue etc will be provided in the next update. Details for the Queen's Platinum Jubilee will be issued separately.

In the meantime, we continue to encourage anyone (and we mean all ages) who would like to join Kilmingtton RBL. In case you wondered, membership costs £18 for a whole year, you do not have to receive masses of junk mail and there is no obligation to attend meetings or events. By joining you are simply donating £18 to veterans or their families who have fallen on hard times or suffer from the effects of war/conflict; and you do not have to be a member, past or present of the Armed Forces to join!

I look forward to seeing you all at our events, please take great care and stay safe.

Cdr Staff Seward OBE RN Rtd  
Chairman RBL Kilmingtton Branch  
07799612557  
E-mail: t60sas@hotmail.co.uk



Sat	2 <sup>nd</sup>	April	Spring Coffee Morning
Sun	8 <sup>th</sup>	May	100 <sup>th</sup> Anniversary of the unveiling of Kilmingtton War Memorial
Thu	2 <sup>nd</sup>	- 5 <sup>th</sup> June	Queen's Platinum Jubilee
Tue	14 <sup>th</sup>	June	40 <sup>th</sup> Anniversary of the end of the Falklands War
Sat	2 <sup>nd</sup>	July	Annual Family Barbecue
Thur	27 <sup>th</sup>	October	Commence Poppy Appeal
Fri	11 <sup>th</sup>	November	Armistice Day
Sun	13 <sup>th</sup>	November	Remembrance Sunday
Sat	3 <sup>rd</sup>	December	Christmas Extravaganza



## THE QUEEN'S PLATINUM JUBILEE CELEBRATIONS

Planning continues for Kilmingtton's celebration weekend, June 2<sup>nd</sup> - 5<sup>th</sup>, outlined in last month's Postscript magazine. We are hoping that some of you will volunteer to help with getting things set up and also some organisation of games and refreshments. It's a great way to get to know people and it would be good to see some new, young faces

getting involved in these village social events, rather than the same old faces.

We'd be very grateful if you are willing to help a little. Please drop us a note with contact details. We have set up an email address you can use to contact the team or send us your ideas for the celebration weekend:

jubilee@kilmingtonvillage.com

## JUBILEE OPEN GARDENS

The Kilmingtton Gardening Club has already ordered red, white and blue plants for their 7<sup>th</sup> May Plant Sale. These can help you decorate your window boxes and garden in patriotic colours.

They are also organising some 'Open Gardens' as an additional attraction for the Friday, 3<sup>rd</sup> and Saturday, 4<sup>th</sup> Village Treasure Hunt. This will provide even more for you to see as you wander around the village looking for scarecrows and clues to the questions. And there will be cream teas, coffee, squash for the kids and cake to enjoy along the way.



*The Queen Scarecrow*



# Cookery Corner

Looking at the calendar, there are several celebration/event days which fall in March this year. Along with Mother's Day and Shrove Tuesday, there is Red Nose Day and World Book Day to name two, providing excuses for a bit of home baking. Two Saints' Days fall in March, so this month's recipes are in respect to them, St David's Day on March 1<sup>st</sup> and St Patrick's Day on March 17<sup>th</sup>. Both of the Welsh inspired recipes are good to make with children and are quick and simple. The St Patrick Day's puddings are more for the adults in the house.

## WELSH CAKES

Makes 24

300g/12oz self-raising flour  
2 level tsp baking powder  
150g/6oz unsalted butter  
100g/4oz caster sugar plus some for decoration  
100g/4oz currants  
¾ level tsp ground mixed spice  
1 large egg  
2-4 tbs milk



### Method

1. Put the flour and baking powder into a bowl, add the butter and rub together until the mixture resembles fine breadcrumbs. Add the currants, mixed spice, and sugar.
2. Beat the egg and milk together and add to the flour mixture to form a firm dough.
3. Roll out the dough on a lightly floured surface to a thickness of approx 5mm. Using a 7.5cm/3 inch round cutter, cut out 24 cakes. You will have to re-roll the dough a couple of times.
4. Heat a lightly greased griddle or non-stick frying pan and cook the cakes for 3 minutes on each side. Don't try and cook the cakes too quickly as the middle of the cakes will be too soft.
5. Remove from the pan and place on a wire rack, sprinkle with a little caster sugar.

The cakes are lovely served warm straight from the pan but can be kept in a tin for a day or so. If not eaten on the day they are made, eat them the traditional way, spread with a little butter.

## WELSH RAREBIT MUFFINS

Makes 12

225g/9oz self-raising flour  
50g/2oz plain flour  
1 tsp baking powder  
½ tsp bicarbonate of soda  
½ tsp salt  
1 tsp mustard powder  
100g/4oz cheddar cheese, grated  
75g/3oz cheddar cheese, cubed  
6 tbs olive oil  
150g/6oz pot of Greek yogurt  
125ml/5fl oz milk  
1 egg  
1½ tbsp Worcestershire sauce



### Method

1. Mix the flours, baking powder, bicarbonate of soda, salt, and mustard powder in a bowl.
2. In a separate bowl, mix the cheese, oil, yogurt, milk, egg, and Worcestershire sauce.
3. Combine all the ingredients together and stir well and then divide the mixture between 12 muffin cases in a muffin tin.
4. Bake at 180C fan/200C/gas 6 for 20-25 minutes.

## CHOCOLATE AND GUINNESS SOUFFLÉ PUDDINGS

Makes 6

150g/6oz unsalted butter  
200g/8oz good quality plain chocolate  
100g/4oz caster sugar  
3 large eggs  
90ml/3½ fl oz Guinness  
To serve: thick double cream and a dusting of icing sugar

### Method

1. Put the butter and chocolate in a bowl over a pan of simmering water and gently melt. Set aside to cool slightly.
2. In a large bowl, whisk the eggs and sugar together until they have doubled in size and are thick enough to leave a trail.
3. Fold the melted chocolate and butter into the egg and sugar mixture and stir in the Guinness.

4. Pour the mixture into six ramekins which have been lightly greased with butter.
5. Bake at 180C fan/200C/gas 6 for 20-22 minutes. The puddings will have formed a crust on the top but will still be 'wet' underneath. Quickly dust with icing sugar and top with a spoonful of thick double cream and serve immediately.



Diane Overton

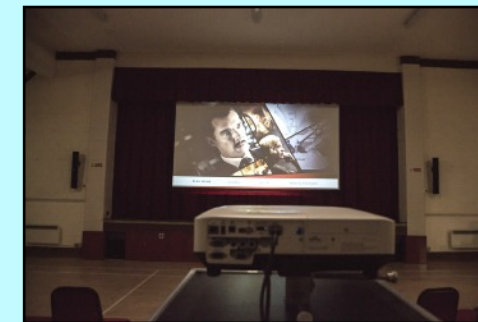


**Kilmington Common Restoration Project in full swing**



**Working hard!**

**Kilmington Community Cinema is open again**



**Glad to be back!**



## MAD moments in the garden

I am so tempted to tidy the garden, clearing last year's debris from the flower beds where it's slowly disintegrating. It is, as I write, still only mid-February. Leaving nature to take its course is the safest option and best for invertebrates but I, for one, now feel the real need, as the spring approaches, to make way for snowdrops, hellebores and primroses, leaving them space to show off their flowers against the dark soil.

Perennial plants in autumn withdraw below ground, drawing all moisture down into the roots, which results in top growth dying back. The roots then produce a form of lipid solution. The roots then lose further water, creating their own antifreeze and reducing the risk of cells being damaged by being frozen in the ground.

So, crossing my fingers, on dry days I have been clearing all the dead top growth, weeding and adding a thick layer of mulch to suppress further weed growth and provide some protection for more tender plants. Plants however do sometimes get caught out by rapid temperature variation and there are still a couple of months before we can be sure another 'beast from the east' doesn't appear from nowhere. As unlikely as that seems with the mild winter we have had, there is no rush. I leave more tender semi-evergreen plants such as *Salvia* or *Penstemon* until mid-April when the risk of them being cut back by frost has passed. I then reduce their last year's growth and cut them back to encourage new growth, stimulating the plant to have a bushy form rather than straggly or leggy one.

Some trees and shrubs such as *Magnolia* produce a sort of antifreeze within the outer bud casing to prevent the delicate

petals from frost or cold wind damage. Unfortunately, if the winter is mild, the plant is fooled into thinking it's spring and the bud begins to fatten, bursting through the antifreeze layer, leaving it vulnerable to very cold weather. The *Magnolia Stellata* in my garden has been showing pretty flecks of white on the buds, the flowers breaking through their case since December. Thankfully, they don't seem to be exposing more vulnerable flowers currently, so fingers crossed the flowers will stay tucked in for a few more months.

*Magnolia* are very ancient trees, fossilized remains dating back 20 million years have been discovered, as well as fossils dating 95 million years ago also have been linked to the *Magnoliaceae* family. Given this was prior to the evolution of bees, the flowers were pollinated initially by beetles, which is why the *Magnolia* carpels are extremely tough. Today they are pollinated by a range of pollinators including beetles, bees and wasps. *Magnolia* are a large genus consisting of about 210 flowering plant species. It is named after the French botanist Pierre Magnol. The name *Magnolia* first appeared in 1703 described in *Genera* by Charles Plumier, Linnaeus, who knew Plumier's work, adopted the name in his first edition of all the known plant specifications *Systematic Naturae* in 1735 and then expanded the description in subsequent publications.

*Magnolia* trees and shrubs provide a great range of early beautiful flowering plants. There are many examples in village gardens and they are well worth planting. Whatever the size of your garden there will be a *Magnolia* to fit.



## KILMINGDON GARDENING CLUB

[www.kilmingdongardeningclub.co.uk](http://www.kilmingdongardeningclub.co.uk)

### SEED SWAP

Have you ever had seed left over at the end of the year and wondered what to do with it, or wanted just a few seeds but did not want to buy a whole seed packet? The **Seed Swap** is the solution!

This year we will be running a series of seed swaps in order to share seeds. We are encouraging members to bring along seed they have saved from their own plants or commercial packets they wish to share. Perhaps, splitting a packet of your favourite variety of runner beans, carrots, tomatoes and swapping for something new is something to do this year.

#### How it will work

Members will bring along seed to the regular monthly meetings in February, March and April, either in their original packets or in small envelopes we will make available. During the talk, the packets will be sorted into

categories (vegetables, flowers, etc) and over tea everyone will be able to look through what's available and take what they need.

To make life easier for everyone, we ask that each seed envelope is labelled with the following information:

- Common name of the plant and variety
- Scientific name (not necessary for vegetables)
- The year the seeds were collected
- Optional information – colour of flower, who grew them, etc

Obviously, this information is not needed if packets (opened or intact) of commercial seeds are brought along.

Richard Lane



*Telephone Box at Gapmouth Corner*

## **HAPPY 10<sup>th</sup> BIRTHDAY! KILMINGTON'S PAPERBACK LIBRARY**



*Telephone Box at The Green*

Back in the winter of 2009, a rumour crept around the village that BT were about to remove the telephone box on Jubilee Green. Some years before they had already taken the one that stood on Roman Road at the end of the common. In 1999, BT operated a network of over 140,000 public payphones, but home phones and mobiles had now drastically reduced their use. Their records highlighted the problem as only 164 calls had been made in the previous 12 months from our box, it was now totally uneconomical to run.

Mumblings amongst residents started that soon turned into indignation 'How dare BT remove what has become an iconic piece of Kilmington street furniture. A truly British monument to our past'

And so it was a 'Save our Box' campaign was started by a group of four (Bill Kerslake, David Hankin, Hilary Abrams, Peter Ball). They had very soon gathered over 70 supporting signatures at the annual garden club plant sale. We discovered BT had been at it for some time and by now had discovered the sensitivity of removing local boxes from around the country. But having now realised the value these kiosks gave them in advertising their heritage and presence, they were willing to do a deal with the locals! Through Parish Councils it was, and still is, possible to either sponsor a phone at an agreed fee to keep it operational, or just buy the kiosk without the phone for £1. Our Parish Council listened sympathetically but was hesitant, understandably, to take on another liability in terms of upkeep and budgetary costs.

Undaunted, the Save Our Box campaign continued to gather more support, with publicity in Postscript and a stall at the Village Show securing more signatures, donations for upkeep and ideas for future use. We also heard stories from

residents who reminisced about calling girlfriends and, as kids, even making nuisance calls from the box! By August it was clear funds were available from residents to buy, fit out the box as a library and maintain it for several years.

So another proposal was presented to the council who agreed to support the project and buy the box. A legal agreement with BT was signed and the cheque for £1 was cashed. Kilmington now owned its own K6 bright red telephone box. Well orangey pink actually, as it was a bit faded and also had some glass panes missing!

Over the following year, BT removed the telephone and our work started to renovate and fit out the Kiosk. A good rub down, coats of rust preventative and red paint, new glass and signage made it look like new. We can thank Neville Cromey-Hawke for the bespoke varnished shelving he created in his garage to display the books. The Kilmington Library opened in March 2012 and has been going strong ever since, the high turnover of books has totally proved its value. We see children on the Jubilee benches reading with their mums and visitors often photograph it.

Hilary Abrams was originally responsible for stocking and displaying books. Since she left the village some years ago, Karen Hodder took on and managed the task and today with Caroline Baylis and Linda Loverage her team do a great job managing the stocking, our thanks to them. As space is limited, we have to insist on paperback fiction books only please. Stones have shattered a couple of glass panels over the years and lighting tubes have blown, but the design is incredibly robust. Last year Peter Squire and I gave it a coat of paint as a birthday spruce-up and once again she looks as good as new.

Peter Ball



**Happy Birthday and we wish you many more years of serving our community!**



# CRIME AND PUNISHMENT

## Justice in 19<sup>th</sup> Century Kilminster

Kilminster is not a place rife with crime. It is safe, peaceable and law abiding. Mostly. But has it always been this way?

Newspaper archives are a wonderful window into the past, laying out our social history on broadsheets to reveal fascinating snapshots of the life of Kilminster's residents, including their 'brushes with the law'. Those archives also record crime and appearances at the *petty sessions*, *quarter sessions* and *assize courts* and tell us much about how people in Kilminster used to live and what their motivations and deprivations were. The fines and sentences meted out by the courts reflecting the aspirational, if perhaps not the actual, social attitudes and needs of the time.

Much of 19<sup>th</sup> century crime around Kilminster seems to have been driven by poverty. Larceny was by far the greatest recorded crime of the period; poorer residents were often driven to poach partridges, steal bread or even 'turnip greens' from the open fields to put food in their children's mouths. On many occasions theft of second-hand boots, trousers or coats resulted in serious consequences for the criminals looking to replace their own worn-out apparel. Vagrancy, drunkenness and use of offensive language were also problems dealt with strictly by the courts. Readers today might expect the magistrates to have been sympathetic and perhaps more lenient to those obviously in abject poverty, but this seems to have rarely been the case.

I am pleased to write that there do not seem to have been any capital crimes recorded in Kilminster, but sadly some quite unsavoury crimes were committed in the area which I have chosen to omit. Instead, I have highlighted a sample of the most common and even mundane crimes, perhaps all too often carried out because of poverty, although not always the case. Our neighbours, separated by just one or two centuries, must have had difficult decisions to make. Each tells a deeper story.

On 30<sup>th</sup> August 1899, it was reported that Sarah Harris, an elderly woman of Kilminster, was summoned to the petty sessions and fined 10s (£60 today) for using abusive language against her neighbours.

In 1897, Frederick Dare, butcher and farmer of George Farm, was fined £2 7s (perhaps £320 today) for being in possession of 'unjust scales'. This was a common crime for shopkeepers of the era with the frequency of prosecutions underlining the importance of correct weights and measures when it came to food.

In 1885, newspapers published an account of Robert Froom, a labourer from Kilminster who was summoned for being drunk in the Old Inn. He was forcibly ejected by the police after threatening the landlord and was fined £1 19s (perhaps £250 today) or one month in prison. He chose imprisonment!

Readers may recall from the May 2017 edition of *Postscript* the tragic tale of Elizabeth Pavey, a milkmaid servant of George Dare in Kilminster. In 1883 she secretly gave birth to a baby which died soon afterwards for 'want of proper attention' and buried its body beneath a hedgerow in an attempt to preserve her employment. Originally charged with

murder, she was sentenced to three months hard labour for 'concealing the birth' after the courts were sympathetic to her plight.

In 1873, newspapers reported that Ann Spiller, described as a poor woman of Kilminster, left her baby alone for eight hours whilst she went to search for work as a lace mender in South Chard, as she often did. Her baby died for want of attention and she was charged with manslaughter. The case was dismissed, perhaps by a judge who felt that she had suffered enough. Whilst this is clearly a case of terrible neglect, one cannot help but wonder at the tragic circumstances which compelled her to abandon her baby as she did.

In 1880, John Odder, a labourer of Kilminster, was indicted for 'sleeping out', being found at night in the shelter of an out-house. He was sentenced to fourteen days imprisonment with hard labour.

In 1854, Thomas White of Kilminster, aged 56, was found guilty of attempting to steal a faggot (a small bundle) of wood for his fire. He was sentenced to one month's imprisonment.

In 1848, Thomas Quick, aged 50, was sentenced to seven years transportation for stealing a shovel in Axminster. A shovel! In the first half of the 19<sup>th</sup> century newspapers were full of reports of 'transportation' to Australia as a sentence for crimes for offences which today we might consider as little more than petty theft or vandalism.

In 1844, John Lane, aged just 17, was apprehended in Kilminster for stealing a silver watch and a horse. He was transported for ten years.

In 1840, William White, a blacksmith of Kilminster, was charged with housebreaking and stealing 'some meat and lard'. After being called to do so, the meat was positively identified by the rightful owners and the 'learned judge' sentenced the blacksmith to eighteen months imprisonment with hard labour.

In 1837, Elizabeth Endacott, of Axminster, stole two turkeys and was sentenced to be transported for seven years.

In 1827, George Spurway, a ploughman aged 20, was found guilty of breaking into the house of James Newberry at Shute. He stole a sizable sum of money for the time (£39, perhaps £4,500 today) which had been kept in a bedroom drawer. His sentence was 'death recorded'; it would be a further five years until the recommended death penalty penalty would be abolished for crimes such as this.



Notice on bridge in Stockland (formerly in Dorset)



# CRIME AND PUNISHMENT

## Continued

To end on a positive note, George did not hang. His sentence was commuted, and he was transported for life to Australia on the convict ship 'Claudine'. As an early colonist, he went on to lead a long life until he died in 1885. Newspapers reported that he was held in 'universal esteem'. It seems that in this case at least, reform and leniency paid off if the crime did not! Or maybe it did?

Should any of us think that the sentences meted out by our justice system today are too lenient, we might also wish to consider what the experience would have been like in the far stricter, and seemingly better policed, 19<sup>th</sup> century. As for the trials and sessions, they seem to have been conducted hastily, without proper defence and with sentences handed out somewhat arbitrarily.

Alan Clarkson

## EVERYDAY THE PLANET BURNS A LITTLE MORE

We only have a short while  
So quick, let me tell you  
We're too far gone to turn this around  
I can't believe  
We have it in us to put this world right  
It is all too late, too late  
How can you say  
*But do not give up hope*  
Every day the planet burns a little more  
And hot air rises  
While governments pump out empty promises  
We are powerless  
Don't be so foolish to imagine that together we have a voice

Big enough to change the world  
The decisions we make each day are  
Unimportant  
The food we eat, the things we buy, how we get around  
How naïve to think  
The destruction of centuries could be undone  
In a few decades  
If we could just reverse

*(now read this poem from bottom to top)*

Brian Bilston

## TELEPHONE BOX ANNIVERSARY

The K6 Telephone Box was designed by Sir Giles Gilbert Scott in 1935 to coincide with the Jubilee of King George V. It became known as the 'Jubilee Kiosk'. As part of the celebrations, kiosks were provided in every town or village with a post office, regardless of cost. As a result over 8,000 new kiosks were installed all over the country. Sadly the King did not live to see any such examples installed.

Between 1936 and 1968 some 70,000 examples were installed around the UK and today it is recognised worldwide alongside the double decker bus and pillar boxes....all red! The cast iron K6 kiosks weigh three quarters

of a ton and were produced in five foundries. Since being de-commissioned back in the early 1980's thousands of red telephone boxes have been smashed and weighed in for scrap. There are now around 11,000 traditional phones boxes across the UK and over 5,000 have been adopted. Some 2,500 examples of K6 have even been granted 'grade II listings'.

We're not sure when our Jubilee box was installed, but it's fitting we're celebrating its tenth birthday on Jubilee Green, the same year that we celebrate Her Majesty Queen Elizabeth's Platinum Jubilee.

## KILMINGTON CONNECTED 28<sup>th</sup> AUGUST 1912

Kilminster finally became electronically 'connected' to the rest of the country on 28<sup>th</sup> August 1912, with the opening of a new 'Telegraph and Telephone Office'.

The first telegraph message sent from Kilminster simply read:

From Kilminster to Axminster: "*Postmaster, Axminster. Hearty congratulations on new telegraph office from Kilminster parish, Botwood, Vicar.*"



The first telegraph received in Kilminster: "*Rev. Botwood, Kilminster. Thanking you, and trusting facilities prove beneficial generally, Postmaster.*"

Alan Clarkson

# THE LEAGUE OF FRIENDS OF AXMINSTER HOSPITAL

Dear Readers,

I am sorry to tell you but this is the last article from Axminster Hospital League of Friends that I will be writing. Due to ill health and advancing years I have retired from the post of Honorary Secretary although I will remain as a Trustee of the League.

The Chairman Dr. Phil Taylor will also be retiring as Chair at the AGM which will, hopefully be held in The Guildhall, Axminster on middle to end of May. With the support of all the Trustees Steve Holt, the current Treasurer, will be proposed to take over the Chair at the AGM.

The League needs re-shaping to fill the vacancies left by retirements and the passing of members if we are to support the hoped-for Home Nursing in the post-coded area of the Axe valley. There are just six meetings a year (every other month) usually held in the evening at Axminster Hospital. If

you are interested in keeping our hospital active or even taking on the role of Secretary or Treasurer, you can contact Steve Holt or myself (I will still be a Trustee) for more information. Alternatively you can leave your details at Axminster Hospital and we will contact you.

I have enjoyed my time as Honorary Secretary and feel that the time over the last eight years has been well spent. Thank you all for your support.

Ann Veit  
Hon. Secretary  
01297 552376

Steve Holt  
Chairman Elect  
01460 221843  
axmlof@gmail.com

## AXMINSTER AND LYME CANCER SUPPORT

[www.axminsterandlymecancersupport.co.uk](http://www.axminsterandlymecancersupport.co.uk)

[www.facebook.com/axminsterandlymecancersupport.co.uk](https://www.facebook.com/axminsterandlymecancersupport.co.uk)

Tel: 07512 279663

Email: [info@axminsterandlymecancersupport.co.uk](mailto:info@axminsterandlymecancersupport.co.uk)

**Mailing address: Axminster and Lyme Cancer Support, Heathermoor, Yawl Hill Lane, Yawl, DT7 3RW**

ALCS reminds all those interested that their face-to-face support sessions have now restarted at Axminster Hospital and that they offer many different kinds of support to cancer patients and their families, not just through the diagnosis and treatment but also beyond. In this newsletter they give special recommendation to another website, <https://cancermatterswessex.nhs.uk>, in partnership with Macmillan Cancer Support, which offers information, videos and links to useful resources to suit individual circumstances at every stage of the cancer journey, explaining what to expect, what treatment options are available, possible side effects, healthcare professionals they may meet and what care can be expected during and after treatment.

ALCS is concerned with maintaining and improving the quality of life during this whole process and is glad to

announce that they can start arranging Nordic Walking sessions again this spring under the supervision of their therapist Lindsay, whom they introduce, along with her range of qualifications and experience in rebuilding and maintaining health and fitness.

Money-raising, in order to keep offering their services, is an inevitable necessity for this charity and there is news of the various ways in which it is achieved. There's still time for their more intrepid supporters to join the sky-diving event on 14<sup>th</sup> May!

If you would like to receive the newsletters, online or by post, or have any queries for ALCS, please use one of the addresses above to contact them.



"If plastic litter is on the street today, then it will be in our rivers tomorrow and in our oceans forever. One in ten barrels of oil is used to create new plastic. We need to work together to conquer our addiction to avoidable single-use plastic. We can change the situation."

So say Surfers against Sewage, the marine charity under whose umbrella Plastic Free Axminster is working. A group of volunteers has pledged to work towards the goal of plastic-free status for Axminster, which includes the surrounding parishes.

Plastic Free Axminster organises regular litter picks and has pop-ups at local events. You can find us through our

Facebook page, which has six hundred members, or contact us via email at [sasplasticfreeaxminster@gmail.com](mailto:sasplasticfreeaxminster@gmail.com). If you are a school or nursery, you can sign up to the initiative to be plastic free. Or perhaps you are a business and would like to know how to cut single-use plastic and become a Business Champion. Or maybe you belong to a community group or church and would like to find out more. We are happy to come and chat with you.

*"Never doubt that a small group of thoughtful, committed citizens can change the world; indeed it's the only thing that ever has."* (M Mead)

K Pike



**Vicary & Co**  
Chartered Surveyors & Property Agents

Estate Agents & Valuers  
Residential - Commercial - Rural

**Thinking of selling?**  
**Call us today to arrange a**  
**FREE market appraisal of**  
**your home.**

Vicary & Co Estate Agents & Valuers  
5 South Street | Axminster | Devon | EX13 5AD  
01297 33449 | sales@vicaryandco.com | vicaryandco.com

Sales Manager Kelsey Lawrence  
Ian Vicary MRICS FISVA MARLA FAAV Pg Dip (Arch Cons) - Chartered Surveyor &  
RICS Reg. Valuer

## FUNERAL DIRECTORS & MONUMENTAL MASONS

# W. G. POTTER

Julian & Karen Hussey DipFD NAFD

*~ a family business ~*

### Dignified, Professional & Caring

- Offices also at Bridport, Seaton, Honiton & Ottery St. Mary
- Pre-arranged & prepaid funeral plans

*Members of The National Association  
of Funeral Directors*

*Recommended by The Good Funeral Guide and  
The Natural Death Centre*

West Street, Axminster EX13 5NX

**01297 34283**

www.funeraldirectors.uk.com



[www.hunthay.co.uk](http://www.hunthay.co.uk)

**Secure Containerised Self Storage**

**Suit Business or Domestic use**

**Caravan + Motorhome Storage**

**Industrial + Starter units**

**Easy, long day & weekend access**

**Owner lives on site**

**Close to A35**

[jenny@hunthay.co.uk](mailto:jenny@hunthay.co.uk)

**Phone: 01297 33839 / 07779 550771**

*Lending with Heart and Mind*

**East Devon District Council fund a not-for-profit  
loan scheme for homeowners and landlords\*.**

**We understand the expense of maintaining your  
home and we work with you to take the stress out  
of funding repairs, improvements or adaptations.**

We see you as an individual, not a credit score.  
Our knowledgeable team of advisers will guide  
you through the process of applying for a home  
improvement loan.

For a no-obligation assessment  
or more information visit

[www.lendology.org.uk](http://www.lendology.org.uk) or call **01823 461099**

Heatherton Park Studios, Bradford on Tone, Taunton, TA4 1EU

\*subject to eligibility



## WOOF'S N WAGS PET SERVICES



**DOES YOUR DOG NEED WALKING?  
GOING AWAY OR WORKING AND NEED  
SOMEONE TO LOOK AFTER YOUR PETS?**

**WE CAN CARE FOR ALL YOUR PETS  
DOGS - CATS - RABBITS - CHICKEN &  
DUCKS - REPTILES**

- **DOG WALKING**
- **PET SITTING**
- **DAY CARE**
- **OVERNIGHT STAYS**

**PLEASE CALL MANDY 07810648433  
woofsandwags21@gmail.com**

## REFLEXOLOGY TREATMENTS — HONITON —



**RELAXING FOOT MASSAGE  
TO RELIEVE STRESS &  
REBALANCE**



*Appointments available.*

CONTACT PAULA  
**07912 351382**

PAULA FENEGAN

★ GIFT VOUCHERS  
ON REQUEST



[www.paulafenegan.co.uk](http://www.paulafenegan.co.uk)



## NIGEL PHILLIPS GARDENING SERVICES

Does your garden need a good tidy

**READY FOR SPRING**

Phone Nigel Phillips 01297 35302

Also regular grass cutting and up-keep all  
year. Friendly local service.

## AERIALS & CABLES

**AERIAL REPAIRS & INSTALLATIONS**

Digital Upgrade

FM • Multi-Points

*Free Estimates*

0781 4481 833



## SUDOKU SOLUTION

2	6	3	4	1	8	7	9	5
8	4	7	5	6	9	3	1	2
1	5	9	2	3	7	6	8	4
4	9	6	3	5	1	2	7	8
7	2	5	8	9	6	4	3	1
3	1	8	7	4	2	5	6	9
9	3	1	6	2	5	8	4	7
6	7	2	9	8	4	1	5	3
5	8	4	1	7	3	9	2	6

## MOPSY MOPS

CLEANING & DOMESTIC SERVICES

*SMALL JOBS TO  
SPRINGCLEANS.*

MATURE FEMALE CLEANER  
CALL SADIE  
0129734367  
MOBILE 07779703388



M  
N  
R

## MNR MOWERS LTD

Unit 8 Devonshire Court  
Heathpark Industrial Estate  
Honiton, Devon EX14 1SB

First: mnr-mowers@btinternet.com

ANDY MOULE

**SALES SERVICE SPARES**

Collection & Delivery in East Devon

For all types of Garden machinery

Tel 01404 548300 Fax 01404 548301

[MNRMOWERSLTD@UNIT8.ECLIPSE.CO.UK](mailto:MNRMOWERSLTD@UNIT8.ECLIPSE.CO.UK)



**Based in Kilminster** & providing all aspects of **Repair, Refurbishment & Renovation.** Including (but not limited to!):

- ✓ General Building Repair and Maintenance
- ✓ Bathroom and Kitchen Remodelling
- ✓ Interior and Exterior Decorating
- ✓ Regular Garden Maintenance
- ✓ Landscaping and Minor Construction
- ✓ Flat-pack Construction (no more frustration!)
- ✓ A lot more - just ask!

Call **Simon** on **07939 242 101** or email **simon@bpmaintenance.co.uk**  
[www.bpmaintenance.co.uk](http://www.bpmaintenance.co.uk)

*"A friendly and efficient service, available in East Devon and West Dorset"*

## §Khushi Kitchen

Fancy a **HOMEMADE** local curry?  
**Then why not try a §Khushi authentic curry experience.**

- ❖ **Kilminster's Friday curry takeaway**
- ❖ **Fresh Frozen Curries available EVERYDAY @ The Old Barn (honesty box system)**
- ❖ **Catering for all occasions, please enquire for a personalised menu**

**Email:** [mina@khushi.kitchen](mailto:mina@khushi.kitchen)

**Web:** <http://khushi.kitchen>

**Addr:** The Old Barn, The Street, Kilminster EX13 7RJ



khushi kitchen-axminster devon & dorset

Check the website regularly for §Khushi's future events and pop-up kitchens.

**Mina x**



## A.G.M.

Axminster Garden Machinery

SALES • SERVICE • SPARES  
 Independent Specialists



**FACTORY APPOINTED  
 AUTHORISED DEALERS  
 OF ALL POWER  
 EQUIPMENT WE SELL**



**Proper Horticultural Engineering since 1979**

**Visit our  
 well stocked  
 showroom  
 now**



**Always  
 Great Deals  
 Available**

Unit 1A Weycroft Avenue, Millwey Rise, Axminster, EX13 5HU  
 Tel: 01297 631186  
[www.axminstergardenmachinery.co.uk](http://www.axminstergardenmachinery.co.uk)

ST. JAMES'S PLACE  
 WEALTH MANAGEMENT

**Financial  
 advice made  
 personal**

We recognise that talking about money and finances is personal – sometimes sensitive. So it's reassuring to know that there's someone on hand who can help you address your needs, understand your goals and realise your dreams.

We offer a friendly and approachable service, backed by the strength and security of FTSE 100 company, St. James's Place Wealth Management; and being local means we're here to help whenever you need us.

Let's start a conversation.

TRACEY PAYNE DpfA  
 Principal

TJP WEALTH MANAGEMENT  
 Associate Partner Practice of St. James's Place Wealth Management  
 Exeter Based | 07817 489047  
[tracey.payne@sjpp.co.uk](mailto:tracey.payne@sjpp.co.uk)

The Partner Practice is an appointed representative of and represents only St. James's Place Wealth Management plc, which is authorised and regulated by the Financial Conduct Authority for the purpose of providing advice on the group's wealth management products and services, more details of which are set out on the group's website [www.sjpp.co.uk/products](http://www.sjpp.co.uk/products). The St. James's Place Partnership and the St. James's Place Partner Practice are marketing terms used to describe St. James's Place representative.

SEP14/SEP15 (29/02)





## Are you worried about your Tax Returns?

We provide a friendly, professional service for self assessment returns, business accounts and all aspects of taxation based on experience, qualifications and confidentiality.

### HOME VISITS AVAILABLE

For an initial free meeting please telephone our office and ask to speak to Hayley Perham (Taxation Director) or email: [crwaccountants@btconnect.com](mailto:crwaccountants@btconnect.com)

**Telephone 01297 553286**

The Personal, Professional approach to Taxation, providing "Peace of Mind"

CRW Accountants Ltd  
The Mews, Queen Street, Colyton, Devon  
EX24 6JU  
[www.crwaccountants.co.uk](http://www.crwaccountants.co.uk)

## Stuart's Sweeping Service

*Your local chimney sweep*



**07432 118318 or 01404 831288**

Evening and weekend appointments available.

## eyecatching

### DRESSMAKING AND DESIGN

in Kilmington Village

Discuss your requirement with Rosemary  
Tel. 01297 639270

## KILMINGTON CROSS SERVICES (PETROL STATION)

Tel. No: 01297 631089

MILK : NEWSPAPERS : HOT SNACKS :  
GROCERIES  
HOUSEHOLD ITEMS:  
COAL: CALOR GAS  
PHOTOCOPYING : OFF LICENCE  
PAY POINT : E-TOP UP: GAS & ELECTRIC:  
JET WASH

### OPENING HOURS

**Monday-Saturday 6.00 am - 10.00 pm**  
**Sunday 7.00 am - 10.00 pm**



Kilmington, Axminster

- Coffee, Late, Cappuccino, Tea and all type of drinks
- Variety of Cakes
- Breakfast available all day, prices start from £5.95
- Starters and Main Meals
- Desserts and Ice Creams



- B&B Rooms available
- Single, Double, Twin & Family Rooms
- All rooms are En-suits
- Rooms available from £49.00



- Function Room – Free of Charge



**Call 01297598060**



# AXMINSTER PRINTING CO LTD

TEL: 01297 32266

*Not just a Printing Company...*

*Established in 1969*



## Printing & Design Services

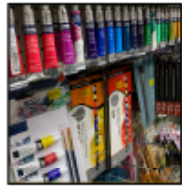
Leaflets, Posters, Booklets, Books, Labels, Tags, Menus, Banners, Magazines, Canvases, Order of Services, Headings, Business Cards, Appointment Cards, Compliment Slips, Headed Cards, Bookmarks, Invoice and Order Forms, Delivery Forms, Folders, Vouchers, Loyalty Cards, Wedding and Business Stationery, Plans, Prints (any Size up to A0) and so much more...



## Stationery

- Student Essentials
- Computer Inks & Toners
- Business Machines
- Packaging Supplies
- Filing Products
- Office Stationery

**All your stationery needs on one place!**



## Art & Craft Supplies

- Art supplies for the student or hobbyist
- Card making materials
- Lots of craft products and activity sets for children



Website: [www.axminsterprinting.co.uk](http://www.axminsterprinting.co.uk) Email: [sales@axminsterprinting.co.uk](mailto:sales@axminsterprinting.co.uk)

Address: Axminster Printing Co. Ltd, West Street, Axminster, Devon EX13 5NU

# Vintage Engineering

An engineering company with a difference. We cater for the one offs and bespoke items, in Metal (welding and fabrication) wood, and mechanical objects.

We restore Vintage/Classic cars and motor bikes, M.O.T. Welding, repair gates, stairs, individual items, make new objects in steel, stainless and aluminium and manufacture or repair wood and mechanical items.



Do you have those broken or damaged objects that you need repairing or replacing that will not cost the earth, and those home repairs or builds that no one seems interested in, we can give you a cost to do those things you just want sorting.

Call 07917765978 –

Whitchurch Canoncorum

[vintageengineering.co.uk](http://vintageengineering.co.uk)

# Chris Stubbs Electrical

Est 1981

OFFICE ADDRESS: UNIT 2,  
THE ASSEMBLY ROOMS,  
GUNDRY LANE, BRIDPORT,  
DORSET, DT6 3RL

**Bridport Office No. 01308 422726**

**Kilminster Home No. 01297 631244**

**Mobile No. 07836 247294**

**email: [StubbsChris@hotmail.com](mailto:StubbsChris@hotmail.com)**

**“For a friendly service  
at a competitive price call us today”**



## GREEN MACHINES

Mobile Garden Machinery Repair

FORMERLY DAVID GEAR HORTICULTURAL

## Oliver Newton

### Service & Repair of all Garden Machinery

## Call Oliver Today!

01297 23913



### WEEK TO VIEW (Events that happen the same time every week)

Sunday	10.30 am	The Beacon	Service
Monday	early	Your house	Recycling collections
	2.00 - 4.00 pm	Village Hall	Country Dancing
Tuesday	10.00 - noon	The Beacon	The Post Office
Wednesday	9.30 am	The Beacon	Toddlers and Tinies (Term time only)
	10.00 - noon	St Giles' Church	Mums and Babies Support Group
	2.00 - 3.30 pm	Village Hall	Short Mat Bowls
Thursday	7.00 pm	The Beacon	Alpha Course
Friday	10.00 - noon	St Giles' Church	Coffee and a warm welcome

### DATES FOR MARCH 2022

Tues	1st	Early	Your House	Garden Waste Collection
	1st	10.30 am	The Beacon	Messy Sparklers
Wed	2nd	7.00 pm	Stockland Church	Ash Wednesday Mission Community Holy Communion
Thurs	3rd	12.00 noon	Pavilion	Lent Lunch
Fri	4th	All day	The Beacon	World Day of Prayer
Sat	5th	7.30 pm	Village Hall	Kilminster Players Quiz Night
Sun	6th	11.00 am	Yarcombe Church	Mission Community Holy Communion
	6th	7.00 pm	Village Hall	Neighbourhood Plan Meeting
Mon	7th	10.30 am	Village Hall	Neighbourhood Plan Meeting
Tues	8th	9.30 am	St Giles' Church	Said Communion
Thurs	10th	12.00 noon	Pavilion	Lent Lunch
Fri	11th	7.30 pm	Village Hall	KGC Talk: <i>Grow Your Own</i>
Sun	13th	11.00 am	St Giles' Church	Morning Worship led by Gill Heighway
Mon	14th	Early	Your House	Landfill with recycling
	14th	7.30 pm	Village Hall	Parish Council Meeting
Tues	15th	Early	Your House	Garden Waste Collection
	15th	12.30 pm	The Beacon	Community Contact Lunch
Thurs	17th	10.30 am	St Giles' Church	Flower Arrangers' Coffee Morning
	17th	12.00 noon	Pavilion	Lent Lunch
Sat	19th	8.00 am	The Beacon	Men's Breakfast
Sun	20th	9.30 am	St Giles' Church	Holy Communion
Tues	22nd	9.30 am	St Giles' Church	Said Communion
Thurs	24th	12.00 noon	Pavilion	Lent Lunch
Sun	27th	Early	Your House	British Summer Time Begins
	27th	9.30 am	St Giles' Church	Mothering Sunday Service with a talk by a Children's Society Representative
Thurs	31st	12.00 noon	Pavilion	Lent Lunch



### DONATIONS, PAYMENT FOR ADVERTISING SPACE AND ARTICLES/NOTICES FOR POSTSCRIPT (i.e. THOSE NOT SENT BY EMAIL)

**It has been necessary to set up alternative arrangements following the closure of the village shop.**

**DIRECTIONS FOR FINDING** Vicky Larcombe's house. Vicky is treasurer for Postscript.

From Whitford Road turn left and walk up The Street, passing Koppers, Kushi Kitchen, the Bull Pen and West Gate on your right. The next house is **Brookside** where Mrs Vicky Larcombe lives. If you find yourself crossing Meadow Bank, you have gone a few steps too far.

Please post payments for advertising in Postscript and donations to help with printing costs  
through the front door of Vicky Larcombe's house. Thank you.



## USEFUL TELEPHONE NUMBERS

### VILLAGE NUMBERS

Bell-ringing - Celia Dunsford	01297 33563	KGC - Bev Perkins, Secretary	01297 631801	RBL - Jean Falconer - Sec Stafford Seward - Chairman	01297 33708 01297 33909
Bridge Club - Eric Samways - Gill Bullock	01297 24260 01297 647768	Kilminster Community Cinema - John Watts	01297 639758	Short Mat Bowls - Edith Turner	01297 34090
Country Dancing - Gill Perkins - Marie Thorne	01297 32888 01297 631194	Kilminster's Little Helpers - Sally Huscroft	01297 32243	Table Tennis - Jenny Nickolls	01297 639758
Cricket - David Lavender	01297 631868	Kilminster Pre-School - Now part of primary school	01297 32762	Telephone Box Library - Karen Hodder	01297 35162
Footpath co-ordinator - Elaine Penzer	01297 34287	Kilminster Primary School	01297 32762	Tennis - Sue Moore Sue Wells	01297 32361 07912 272102
Hitchcock Pavilion bookings - Peter Huscroft	01297 32243	Millers Farm Shop	01297 35290	Village Hall bookings - Louise Quincey	01297 32358
Kilminster A35 Pit Stop	01297 598060	The New Inn	01297 33376	Village 100+ Club - Jean Falconer	01297 33708
Kilminster Cross Services	01297 631089	The Old Inn	01297 441855	www.kilminstervillage.com - Luke & Maxine Lawson	07719 909532

### MEDICAL AND SUPPORT

Axminster Hospital	01297 630400	'Devon Doctors on call' (Out of hours GP service)	0845 6710270	Veterinary Surgery	01297 630500
St Thomas Court Surgery	01297 32126	Dentist Helpline	03330 063300		

### SERVICES AND FACILITIES

Refuse Collection	01395 571515	Axminster Library	01297 32693	Clerk to the Parish Council	07800 826657
Water - general - leaks	0344 346 2020 0800 230 0561	Mobile Library	01404 42818	E. Devon District Councillor - Iain Chubb	01297 35468
Electricity - emergency	0800 365 900	Ring & Ride	01404 46520	Devon County Council, Whimble and Blackdown, Iain Chubb	07932 459595
		Axminster Care Service	01297 35550		

**Police:** Crime stoppers - 0800 555111; Emergency - 999; General - 101

### CHURCHES

<b>St Giles' Church</b> Rev Julie Lomas	01297 35004	<b>Baptist Church Office</b> Pastor Mike Hudson	01297 631638	<b>Axminster Catholic Church</b> Parish Priest: Father Anthony Cockram	01297 32135
--	-------------	--	--------------	--	-------------

### ADVERTISING IN POSTSCRIPT

Postscript is published ten times each year and is delivered free of charge to every house in Kilminster. All advertising fees and donations to Postscript are used to meet the cost of printing. ALL advertisements which are set out, from any source, are chargeable as follows and must be paid for in advance.

	<b>Black and white ads</b>	<b>Colour ads</b>
Credit card (70 mm x 40 mm)	£ 5 or £22.50 for 5 months	
¼ page (90 wide x 136 mm high - Portrait)	£12 for one-off or £50 for 5 months	£15 for one-off or £75 for 5 months
½ page (184 x 136 or 90 x 276 mm)	£20 or £90 for 5 months	£30 for one-off
Full page (184 x 276 mm)	£30 or £130 for 5 months	£40 for one-off

If the advertisement could be sent as a jpeg it is a great help when sizing for publication.

**BACK COVER:** *Occasionally the back cover is available for a one-off colour page advertisement. Cost: £50*

*Additional fee of £1 if Postscript has to edit, size or set copy.*

**PAYMENT:** Cheques should be made payable to: Kilminster Postscript and posted to: **Mrs V. Larcombe, Brookside, The Street, Kilminster, EX13 7RJ.** BACS account name is **Kilminster Postscript**, sort code: **51.61.23**, account no: **18159400**

**COMING AND GOING FOR A SONG:** There is no charge for these entries for items valued up to £20 or less. However, donations are appreciated - these can be popped through Vicky Larcombe's door (please see directions on page 22).

# Kilmington Neighbourhood Plan

## Public Meetings

At these meetings Kilmington Parish Council hope to improve the understanding of:

- What Neighbourhood Planning can and cannot achieve;
- The outline of the plan;
- The reasoning behind the policies;
- What your parish council has submitted and why;

Questions and comment will be welcomed. Kilmington residents will soon be asked to vote for or against the plan. This is your opportunity to explore the future of your village.



**Sunday 6 March 7:00pm**  
**Monday 7 March 10:30am**  
**Kilmington Village Hall**