

KILMINGTON

POSTscript

Issue 229 November 2020



EDITORIAL

Back in March this year Postscript was welcoming the Spring Equinox – leaves greening, birds nesting, stars in their proper places – all predictable – and looking ahead to warmer weather and plans for summer events such as Axe Vale Show, coffee mornings, clubs and get-togethers in gardens. But things did not turn out that way. Although the natural world outside continued as usual, it was as if we had slipped sideways into a parallel universe where perspectives and priorities had shifted. Everything was ‘unprecedented’, the news was full of statistics and everyday life was constrained by a whole new set of rules which have since been frequently readjusted. Now we have just passed the Autumn equinox and restrictions still abound, but Kilmingdon and its various organisations are making the most of what is possible.

In this month's Postscript Anna Crabbe looks back to the reign of milkdadies Gill and Jill and includes a poem written in their honour. Lionel and Iris Quick have sent an update from Yatima orphanage which many support by buying jam and marmalade from the stall outside their house. The New Inn, just opposite, also features this month. Sadly, there is a farewell message from Carey and Mandy, who are about to move on after six years as tenants and we have a warm tribute from some of their many appreciative regulars and photos of events which have contributed so much to entertainment and enjoyment in the village. Another of their customers is quizmaster Clive Garner, whose quizzes in Kilmingdon over twenty-two years have raised huge sums for various charities and led to an invitation to Buckingham Palace. He now feels it is time to retire and has written thanking everyone for their support.

Looking ahead, there is a chance to influence future decisions as the Neighbourhood Plan goes through its stages and you may be glad to hear, after many years of concern about the main road, that we have received an article about the progress of the A35 Route Safety Study. The RBL outlines the plans for the annual Remembrance ceremonies and the provision of poppies. Some may remember ‘Gator’ in the splendid VE Day garden waste collection after all the weeding during lock-down. The Gator/Stafford/Kilmingdon won a British Legion National Award for Creative Fundraising - congratulations all round! It will tour the village again on Saturday, 7th November selling poppies and collecting donations. Volunteers are needed to clear brambles in readiness for planting Heath Lobelia and there is an invitation for somebody to record local rainfall. Gardening is therapeutic for all and ‘MAD Moments’ is already considering plans for growing next year's vegetables.

Janfryd

Front Page - D Bromley,
Middle and Back Pages - M Gardner and B Wood

CONTRIBUTIONS TO POSTSCRIPT

Please remember to use the email address for Postscript:

postscript@kilmingdonvillage.com

Alternatively, please give your item to any team member.

The closing date for submitting items for the December/January issue is 15th November 2020. All will be acknowledged. Please email or ring 01297 639115 if not acknowledged within 48

POSTSCRIPT TEAM

Editor

Janfryd Gordon-Kerr 01297 639115
janfryd@gordon-kerr.org.uk

Team

Peter Ball 01297 32631
mycraigdon@aol.com

Marie Gardner 01297 33489
m.gardner6819@gmail.com

David Bromley 01297 631801
david.bromley3@btinternet.com

Valerie Harding 01297 34206
vharding38@gmail.com

Jill Collier 01297 32390
summerleaze@hotmail.co.uk

Gill Heighway 01297 33951
gillheighway@gmail.com

Gill Perkins 01297 32888
john.perkins444@btinternet.com

Distribution

Diane Overton 01297 33569
diane.overton@outlook.com

Treasurer

Vicky Larcombe 01297 33858
vlarcombe30@aol.com

Postal address

The Granary, George Lane, Kilmingdon, EX13 7RT

Printed by Axminster Printing
01297 32266

Postscript is published 10 times each year and is delivered free of charge to every house in Kilmingdon. Almost all items in the magazine come from the village community who are very supportive of the magazine.

The Postscript team are all volunteers and your donations, together with fees from advertisers, are used to pay for the cost of printing.

DONATIONS

Arrangements for donating to Postscript have changed as a result of the closure of the village shop. Please see page 22 for details. Donations to the middle of September came to £24.80. All donations go towards printing costs. Thank you for your continuing support.

ADVERTISING RATES

Please see inside back cover for details.

The average cost per 28-page copy of Postscript with several colour pages is 75p.
Extra copies are available from Millers Farm Shop, where donations may be made.

Disclaimers: Items in this publication are the work of individuals and do not necessarily reflect the thoughts or opinions of the editorial team. The editorial team reserves the right to make small alterations to items submitted. Contributors are responsible for ensuring that parental permission has been obtained before pictures of children are submitted for publication. The content of advertisements is not the responsibility of the editorial team. Queries should be addressed to the advertiser. This publication is online at www.kilmingdonvillage.com. In addition, earlier issues will also appear online from time to time.

VILLAGE HALL '100+' CLUB

HERE ARE THE WINNERS OF THE DRAWS HELD DURING THE COVID-19 LOCKDOWN

The winners of the draw held on 19th March 2020

Y Cilia	£30	J Gobu	£5
B Kerslake	£15	K Tucker	£5
G Jones	£15	A Playford	£5

The winners of the draw held on 22nd April 2020

H Kirkcaldie	£30	R Hurford	£5
E Harden	£15	M Rodgers	£5
P Bellworthy	£15	J Porter	£5

The winners of the draw held on 21st May 2020

M Robinson	£30	K Storey	£5
J Jolley	£15	N Bond	£5
D Ingles	£15	P Martell	£5

The winners of the draw held on 25th June 2020

B Woodsford	£30	A Dare	£5
M Kerslake	£15	L Rew	£5
G Heighway	£15	F Holme	£5

The winners of the draw held on 25th July 2020

D Fudger	£30	M Parker	£5
S Seward	£15	M Dare	£5
J Martell	£15	J Atkinson	£5

The winners of the draw held on 24th August 2020

D Hurford	£30	P Horwood	£5
S Agosti	£15	P Talbot	£5
B Perkins	£15	J Mellows	£5

The winners of the draw held on 27th September 2020

R Hiatt	£30	S Moore	£5
D Smith	£15	L Heighway	£5
S Pape	£15	G Gibbs	£5

All the winners have now received their winnings.

For further details, please contact
Jean Falconer on 01297 33708

UPDATE ON THE 'A35 ROUTE SAFETY STUDY' OCTOBER 2020

The Highways England Route Manager for the South West region issued a note in September 2020 to all the parishes involved in the A35 safety working group – namely Offwell, Widworthy, Shute, Dalwood and Kilminster Parish Councils. Kilminster Parish Council would like to share with you a brief update.

As we are all aware there, is an issue with the safety of the A35, particularly as it runs through our village at 50mph, with numerous accidents every year. The village rallied together in 2014 to highlight the issue once again to Highways England. The relevant surveys were undertaken and it was agreed in 2016 that there was indeed a safety issue, suggesting the speed limit should be lowered to 40mph. But at this stage other users along the A35 were also campaigning for improvements. In 2019 we were told that Kilminster and Wilmington would not be considered alone for improvements, but they would be amalgamated into a much larger study from Charmouth Roundabout to Honiton. It was suggested that there was potential for 'new technology' to be used, such as average speed cameras to reduce speed, thereby hopefully reducing collisions across this section. For Kilminster a 40mph speed limit and crossing are also being considered – but this is by no means certain. This is a very slow burning process, where we have indeed got through the first stage of 'recognition of need'. The Highways England team now need to make further feasibility studies to establish the infrastructure costs and

benefits of such a scheme across the larger section of the A35 (Charmouth to Honiton).

As the Department of Transport run their finances in five year cycles, we must remain hopeful to obtain some of the current 2020-2025 funds to improve this road. The timescales continue to stretch and we are currently being advised that construction/delivery of the scheme will be in 2023/24 (but as always dependent on their feasibility/costing business case), and yes, ten years after we started the Make it Safer campaign. Given the Department of Transport predicts a 40% increase in road users by 2040, this really is an important improvement for all road users of the A35 and of course for preserving our village and all its users (on foot, cycle and horse too).

We hope that you appreciate that these are the details we have from Highways England and we will continue to pressurise Highways England, as much as we can, and ensure that improving the safety of the A35 remains a high priority for them.

Useful links to view:

https://assets.publishing.service.gov.uk/government/uploads/system/uploads/attachment_data/file/872252/road-investment-strategy-2-2020-2025.pdf

Emma Styles
Kilminster Parish Council

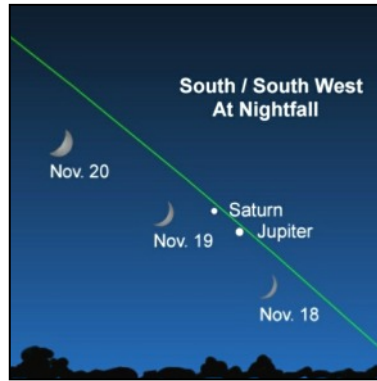
KILMINGTON SKY AT NIGHT

Another month with lots to see in our dark skies. See all five bright planets this month: Mars, Jupiter and Saturn pop out first thing at dusk into nightfall. The other two, Mercury and Venus are found in the early morning sky. All these planets can be seen without a telescope. We also have two meteor showers, so watch out for 'shooting stars'. October saw some very clear nights so let's hope November delivers the same.

First week of November is favourite for the South Taurids, but they are long, spread-out showers with no well-defined peak. During the peak nights you might see as many as five meteors per hour.

5th and 6th Moon close to Castor and Pollux the twins in Gemini. In the eastern sky two bright stars close together and close to the waning gibbous moon.

9th-11th Mercury is beneath Venus low in the eastern sky. Draw an imaginary line from the moon through Venus and it points in the general direction of Mercury. As the predawn darkness begins to give way to morning twilight, look for Mercury near the horizon, binoculars will help.



12th Taurid Meteor shower peaks around now. These slow and long-lasting meteor showers occur every year from late October and through November. The peaks of these showers aren't well defined. What's cool about them is the possibility of fireballs, or very bright meteors ... watch for them in the early hours.

17th-18th Leonid Meteor shower; peaks in the dark hours before dawn on Tuesday 17th you may see as many as 10 to 15 meteors per hour.

18th Moon, Jupiter and Saturn close together. For the next few days, as darkness falls, use the waxing crescent moon to locate the gas giant planets of Jupiter and Saturn. Jupiter is the brighter of these two worlds, outshining Saturn by 12 times. Even so, Saturn is also respectably bright, shining as brilliantly as a 1st magnitude star. Watch day by day as Jupiter closes the gap between itself and Saturn, to stage the closest Jupiter-Saturn conjunction since July 16th, 1623.

29th Full Beaver or Mourning Moon

Peter

HEATH LOBELIA UPDATE

The project gathers apace to increase the population of this rare plant special to Kilminster and Shute. In August, volunteers were busy searching previous known sites around the two villages but with no success. However, they are delighted to report that the population at the only one existing site is doing extremely well. Volunteers visited the site in September to carry out the annual count and also collect seed. Despite drought



conditions this summer, 112 plants were counted and it appeared that further plants were still establishing.

The seed collected has now been distributed amongst a dozen sowers and hopefully growers! Once plants are successfully raised, it is planned to introduce these plants to Kilminster Common in 2021.

Ruth Worsley

KILMINGTON COMMON BRAMBLE CLEARING

Volunteers Wanted - 10.00 am -12.00 noon Saturday, 14th November

Back in early September, project ecologists Phil Wilson and Marjory Waters, visited the Common to assess the habitat there. With an excellent representation of heath land species, the Common is ideally suited to holding a second population of Heath Lobelia. It is believed that the area is indeed part of the original historic Kilminster Common, where the flower is known to have grown for a stretch of a mile across the Common two centuries ago.

However, to maintain the variety of heath land flora the invasive smothering bramble needs to be removed.

Volunteers are invited to help out for a couple of hours. To carry out the task in a Covid secure way, safe working distances of 2m will be followed and it is advised that volunteers bring their own tools and gloves – loppers and/or forks and rakes. To ensure safe numbers working, booking is essential. Email legacytolandscape@gmail.com or ring Ruth Worsley 01297 489741.

Meet at the central area of the Common, Shute Road (opposite Kates Well house)

MOBILE LIBRARY

Tuesday, 3rd November at 11.20 - 11.50 am at the junction of The Street and The Hill.

REFORM PLANNING IN KILMINGTON – YOUR OPPORTUNITY!

The Kilminster Neighbourhood Plan (KNP) will enable village residents to play a much stronger role in shaping our Parish in future years to 2031. When adopted, our plan will sit alongside the EDDC Local Plan and form part of the statutory East Devon Development Plan. All future decisions on land use, development and planning applications in Kilminster must then be determined in accordance with this development plan, unless material considerations indicate otherwise.

Kilminster Parish Council (KPC) appointed a Neighbourhood Planning Team which is made up of volunteers from various walks of life around the village. Together, we have been working to understand what village residents would like our community to look like in the future. We have tried to include the views of as many parish residents as possible. Using questionnaires and several consultation events we have updated views from past planning documents created by the KPC: The Kilminster Parish Plan (2007) and The Kilminster Village Design Statement (2011). Together, both of these excellent documents formed a solid foundation on which we could start to build the neighbourhood plan. We have employed a specialist planning consultant and have been working with Devon Communities Together regarding housing needs. The EDDC Neighbourhood Planning Team have also supported us and given very helpful advice. Further information about the neighbourhood planning process and the KNP is available on the village website.

Our team have now produced a draft plan which we believe reflects the wishes of village residents and this was approved by the Parish Council at their October meeting. We will publish this plan in the next few weeks so that you have an opportunity to give us any further comments you may have.

As the full KNP document is some 100 pages, we are producing a summary of the plan and will hand deliver this to every household in the parish in the coming weeks. The full document will be available to read on the Kilminster Village Website and we will also make printed hard copies available at several convenient locations around the village. The summary will give you details of where these are and how you can give us your comments on the proposals. Unfortunately Coronavirus restrictions mean that at present we cannot hold our planned consultation meetings in the Village Hall. If this changes we will let you know.

If you live or work within Kilminster, this is your opportunity to make your views known on these proposals which suggest how the village could develop over the coming years.

We will review the draft plan following comments received from this consultation before a final version is formally submitted to EDDC. They will then carry out further consultation and arrange for an independent examiner to check whether the plan meets the 'Basic Conditions' and other relevant legal requirements. The examiner may make further recommendations before agreeing that the plan can go to referendum. All of this will probably take us through to June 2021. Kilminster residents will then have the opportunity to vote for or against the plan. A simple majority, over 50% of votes, will carry the plan forward to adoption.

In the meantime if you have any questions you can send them to: np@kilminstervillage.com or contact Peter Ball on 07747 636810.

Kilminster Neighbourhood Planning Team

WHAT A NEIGHBOURHOOD PLAN CAN AND CANNOT DO

"It can..." ✓	"But it cannot..." ✗
<ul style="list-style-type: none">✓ Develop policies specific to our area, for example, design of new development.✓ Protect the facilities and areas of land that the community values most such as community buildings, playing fields, etc.✓ Help us to get additional funding into the area, for example, through identification of projects or having a plan adopted ("made")✓ Protect areas of land for conservation, biodiversity and landscape value.✓ Influence the type, location and design of development.✓ Help to secure additional funding for infrastructure and other projects.✓ Propose regeneration projects, transport solutions and areas of land for the allocation of housing and / or employment sites if we wish to do so.	<ul style="list-style-type: none">✗ Introduce policies which conflict with national or District Council "strategic" planning policies.✗ Force requirements on developers which make the delivery of development unviable.✗ Change regulations / legislation such as Building Regulations or Permitted Development Rights.✗ Simply repeat (duplicate) national or District Council planning policy.✗ Reduce the scale of new housing if proposed by the District Council.✗ Stop all development.✗ Deal with matters not dealt with through the planning system, for example:<ul style="list-style-type: none">• Change traffic speed limits• Increase broadband speeds• Enforce parking restrictions

QUIZMASTER CLIVE RETIRES

To all my loyal supporters, I'm sorry to tell you that I have decided to retire from doing the New Inn Monthly Quizzes which I have been doing for the last 22 years. In that time we've done 247. I feel the time is right now with everything that is happening with the Coronavirus at this present time, and not knowing when we would be able to re-start.

It all started back in 1998 to raise money for the New Inn landlord at that time, Brian Jenkins, who was running in the London Marathon supporting leukaemia. The quiz was such a success that myself, Dave and Kath Hutchings decided to keep them going on a monthly basis. To date these New Inn quizzes alone have raised £53,562. Some of the charities we have raised money for include:

Devon Air Ambulance	£12,068
Axminster Hospital Cup	£5,896
RBL poppy appeal	£4,253
F.O.R.C.E.	£3,550
Cancer Research	£2,199

Plus many others including: Motor Neurone Disease, Down's Syndrome, Arthritis Care, Kilmington Primary School, Flamingo Pool, Kilmington Cricket Club, Postscript, Hospiscare, British Heart Foundation, Shute School, Brainwave and Guide Dogs For The Blind.



In the summer of 2001 I was approached to do a quiz on Saturday nights for six weeks during July and August at Andrewshayes Caravan Park. These events continued until 2005 and raised £5,309 for the Devon Air Ambulance. I have also done various quizzes at Kilmington Village Hall for the church fund, The Duke of Edinburgh Awards and others. I've also done several in the old Axe Vale Social Club in aid of various people running in the London Marathon, the Cats Protection League and Asthma, plus some for my grandchildren's schools in Taunton and pre-school in Whitchurch Canonicorum.

To date the overall total raised by myself and our team is £64,964.92.

As for funny moments, we got them most months; they are called 'Garnerisms' - as my pronunciation is not always what it should be!

In July 2009 my wife and I were invited to Buckingham Palace as a thank you for all my charity work. It was a wonderful day which both of us will never forget.

I would like to thank everyone for their support over the years, especially my team of Dave and Kath whose help has been invaluable.

Clive Garner

WINNING CHRISTMAS CARD INSPIRED BY KILMINGTON

on sale for ARC from end of October

My parents have been regular visitors to Kilmington for the 20 years that I've lived in the village. Originally they came down from Bristol most weeks for 'grandparent duties' or to exhibit in the Kilmington Show, but they soon developed their own social life here too. When my Dad passed away five years ago Mum took up an art club and the East Devon scenery inspired a lot of her work.

At one time in her career Mum worked for a greetings card company and she often mentioned getting this picture (which she painted on slate) made into Christmas cards but she never got round to it. She became unwell in May and asked me to use the painting as a Christmas decoration so that she would continue to be a part of Christmas in Kilmington. I didn't get round to asking her but I do believe that the scene originates from the Kilmington library which she was a regular user of and is just outside our house



(I think she used her creative licence to replace the dog poo bin with a letter box!)

Just before Mum passed away in September my daughter Millie entered the painting into the ARC Christmas Card competition on her Granny's behalf. We were driving home from her funeral when Millie took the call to say it had won and would be one of the designs for the ARC Christmas cards this year.

The purpose of this Postscript entry is purely to advertise that the card will be available from the ARC shop in Axminster by the end of October and of course all proceeds go to the wonderful work that ARC does.

Happy Christmas, if you are on our Christmas card list you know what picture you will be getting!

Karen, Charlotte and Millie Chadwick

Vacancy
St Giles' Church
Kilminster
01297 35433



Letter from the Churches

Pastor Darrell Holmes
KBC Church Office
Kilminster
01297 631638
pastor@beaconbaptist.co.uk

Sister Stanislaus Kennedy was the first religious sister ever to receive an honorary Doctorate in Law from Trinity College, Dublin. She joined the Irish Sisters of Charity in 1958 at the age of 19 and since that time has been instrumental in developing and implementing social service programmes that have benefited thousands of needy people, for which she has received many awards. Sister Stan has written several books including 'gardening the soul' from which I have taken these two seasonal thoughts.



Harvest: Harvest is a joyful, fulfilling time, but it can also be a time of worry and risk. We have to judge the right time to gather the crop, not knowing whether we should wait another week or go for it now, not knowing whether the sun will lavish its rays and make the crop more wonderful still or whether the rain might come and destroy it. Putting off the harvest in the hope of a perfect yield is attractive, but it is a risky business.

The secret is to know when enough is enough for now. The wise harvester knows that the harvest is about reaping *all* the

fruits of life, all the joys and sorrows, fears and hopes; what worked and what didn't work; those whom we loved and those whom we didn't. The wisdom of the harvester is in knowing how to reap the good and winnow the chaff with freedom and gratitude, without fear or worry.

'Sow for yourself righteousness, reap the fruit of unfailing love.' Hosea 10:12

Remembrance: Memories are important, but there is, too, a wisdom in forgetting, in distancing ourselves from the sadnesses of

the past. There are times when we are simply not strong enough to deal with our memories and so they wait for us to grow stronger – some instinctive knowing within us honours that fear. When we are ready to remember, reminders will come in little ways and within those reminders will come the necessary strength for remembrance.

"Once you make a decision, the universe conspires to make it happen." Ralph Waldo Emerson

Gill Heighway

THANK YOU

We would like to thank all who have supported our stall at Wellmead by buying jam, marmalade and plants sold in aid of the Yatima Orphanage in Tanzania. We also thank all those of you who have bought preserves at the pop-up post office at the Baptist Church and a few other activities held there over recent months.

Because of lock-down, we have been unable to have table-top sales or visit other church groups. So your purchases and donations have been even more appreciated.

Recently we had a message from the Yatima Orphanage to say that their water pump had broken down. Thanks to the recent high sales we were able to send £500 immediately.

Thank you again for all your continued support.

Iris and Lionel Quick

**MNR MOWERS LTD**
Unit 8 Devonshire Court
Heathpark Industrial Estate
Honiton, Devon EX14 1SB
ANDY MOYLE
SALES SERVICE SPARES
Collection & Delivery in East Devon
For all types of Garden machinery
Tel 01404 548300 Fax 01404 548301
MNRMOWERSLTD@UNIT8.ECLIPSE.CO.UK

PETS
DEBONAIR DOGZ
Professional Dog Grooming Services
Please call Debbie Woodhouse to discuss
your pet's individual requirements
Tel 01404 831 438 Mobile 07966 250441
Offwell Nr Honiton
Member of and Professionally trained by a school recommended by the British Dog Grooming Association

**GARDENING SERVICES**
ADAM WOOLCOTT
EMAIL: adamwoolcottgardening@yahoo.com
PHONE: 07815 693350
Local, friendly and reliable service
Regular and one-off gardening help

MOPSY MOPS
CLEANING & DOMESTIC SERVICES
SMALL JOBS TO
SPRINGCLEANS.
MATURE FEMALE CLEANER
CALL SADIE
0129734367
MOBILE 07779703388

DELIVERY VACANCY

The volunteers who distribute Postscript ten times a year perform a vital service and there would be little point in producing it without them, but now one of our long-standing distributors, Marie Thorne, is about to move into Axminster and will no longer be able to deliver it after this November issue. Many thanks to her for all she has done, which is greatly appreciated.

We will ensure that the households on her round receive the December/January issue but we shall need someone to take over, starting with Postscript for February 2021. The round consists of George Lane, including Newton's Orchard and The Orchard, a total of about 25 copies.

Would anybody who would be interested and willing to do this please contact Diane Overton - details are in the team list on page 2.

RAINFALL RECORDS

A group of enthusiasts keep track of the rainfall in the wider Axe Valley and environs each month. The variance is interesting and ranges over an area from Membury down to the coast including Lyme Regis.

It would be nice if a few more areas could be added, Kilminster being just one, also Colyton, Shute, Hawkchurch, Chardstock and Seaton.

If anyone takes daily measurements and is willing to submit them each month they would be welcome to join the group and share their data. If so, or if you know of anyone who might be interested, do please get in touch with our co-ordinator at chrisbryan327@btinternet.com

Alan Kennard

A JOB TO DREAM ABOUT

Has anyone spent their whole working lives doing jobs they have loved?

I left school at 15 because I already knew it all! I spent my first three years as a nanny to three adorable doctor's children, living in. I still keep in touch with the girls, Pippa and Carrie today.

I then needed a complete change and went to work on a farm, milking cows. I lived with the family Monday to Saturday and rode my trusty Lambretta scooter home to mum for the weekend.

Next, I went to an ironmongery-cum-hardware shop where I did the accounts. You could get anything in that shop from one screw or nail to a tractor. By this time, I was engaged to be married so was able to buy lots of stuff for my bottom drawer from the shop.

When I married in 1970, we moved to Shute, 45 miles away from my mum and 25 miles from my in-laws. No telephone, so lots of letter writing.

We used to go to the Shute Arms where we made many friends, and when the pub closed it was up over Ashes Lane to the New Inn, Kilminster. When daughter number one arrived in 1972 things improved, everybody spoke to you if you were pushing a pram! My second daughter arrived on my first daughter's second birthday, and it being Easter she told her gran she'd rather have had an Easter egg.

We moved to Kilminster in 1979 where I took on the post of resident warden to the elderly. In 1983 when the girls were older I went mobile, covering East Devon from Uplyme to Lympstone and all the areas in between. This job was my favourite, we were all one happy family and I was either installing emergency alarms or visiting elderly clients.

I heard some wonderful stories and plan to write a book one day!

Living in Kilminster has always been a blessing. I enjoy village life, going to my lovely church, the New Inn and all the other things there are to enjoy. Both our daughters live in Axminster so we see a lot of them. Michele has worked in the same solicitor's office for 30 years. Nicola is a community psychiatric nurse based at Chard and covering the Yeovil area. Nicola is married with three step-daughters and three step-granddaughters (and another on the way). We do not have any grandchildren which gives me more time for baking and craftwork!

My marriage broke up in 1992 and my beloved mum died in 1994. She was also my best friend, so although she was 83 it was far too early to lose her. I continued with my same job, remarried in 2000 and carried on living in the same house. Unfortunately, I had several breakdowns so took early retirement in 2004.

Since then I have done voluntary work, care service driving, visiting Koppers Specialist Memory Care Home in Kilminster and working as a care navigator for hospices. I can't wait to get back to the latter when Covid-19 is over.

My friend of many years, Mary (Seward), died three years ago and I miss her terribly, she was a very special lady, everybody's friend. I don't know how many godchildren she had, I know it was many and Nicola was one of them. When Bill and I married in 2000 she organized all the catering for us, no problem. You don't get many friends like her.

When Covid-19 is over I think we must all count our blessings and hope we never have to face this sort of problem again.

Barbara Woodsford

THE ORIGINAL MILK & MORE!

It's now ten years since Jill Collier and Gill Perkins stopped delivering milk to Kilmington and the surrounding area. In November 2010 there was an article in Postscript about this amazing duo and we thought it was time for another.

Mike Collier, Jill's husband, started the milk round in 1960 from Brooklands Farm in the village, selling their own milk at five old pence a pint! Gill joined Jill to help deliver and some of the Lavender, Broom and Overton families helped at various times. Jill and Gill delivered every single day for a while, only later stopping Sundays and then four days a week. Ice, snow, floods didn't stop the deliveries although sometimes they had to use the tractor and horse box when the weather was really bad!

A memorable incident was one occasion when Jill Collier's daughter Emma was in her baby seat between the two front seats of the van, parked outside Newtons, and kicked her legs so vigorously she kicked the hand brake off, the van rolled slowly back into Copps, the Colyton bakers' van parked outside the old Post Office....luckily only damaging a door!

Jill and Gill started at 5.30 am each day and delivered to Shute and Whitford as well as Kilmington, always having time to chat.

Now we have Milk & More delivering milk in glass bottles. Some people, like us, have gone back to milk deliveries to reduce single use plastic. People are much more used to paying online now, especially in the last few months, and we



are fortunate that we still have milk deliveries.

Jill and Gill were involved in many shows in Kilmington including, in the Golden Jubilee year, a hilarious performance of Ernie (David Lavender), the fastest milkman in the West. They also played Prince Charming and Dandini in Cinderella and were in several revues.

This poem written by John Robertson, was a lovely tribute to

a very popular milk duo.

END OF AN ERA

There's something missing on The Street;
Gone is the patter of busy feet,
When all around is dark and still,
Slumbering through the winter's chill.

There's something missing on Bim Bom Lane;
Gone is the hiss of tyres in the rain.
Where is the laughter of two friends together
Which brightened the day in spite of the weather?

There's something missing on Meadowbank;
Gone are the sounds of clink and clank,
Accompanied by an engine's hum,
Heralding the dawn to come.

There's something missing on The Hill;
Gone are our milkmaids Gill and Jill.
They're out delivering milk and creams
But only in the land of dreams.....

Anna Crabbe

SUDOKU CHALLENGE

Level: Moderate

To solve this puzzle, each 3 x 3 square, row and column must contain all of the numbers 1 to 9. The solution is on page 22.

9			5		7			3
		3				7		
	4		3		2		1	
5		7	9		6	4		8
1		4	7		8	6		5
	5		8		3		6	
		2				9		
6			4		1			2



This year the 'Cards for Good Causes' Axminster shop has moved to bigger, Covid-secure premises.

We shall be in Chard Street, Axminster, EX13 5DL, just past The George Hotel and next to the 'Friends of ARC' Charity Shop. Browse our wide selection of Christmas cards from many charities, plus traditional Advent calendars and candles, wrapping paper and trimmings.

We will be open from **Thursday, 22nd October** – **Thursday, 10th December**, 10.00 am - 4.00 pm on weekdays; 10.00am – 1.00 pm on Saturdays (closed Saturday afternoons and Sundays).

Anne Double

OUR TRIBUTE TO A FINE LANDLORD AND LANDLADY AND OUR FRIENDS

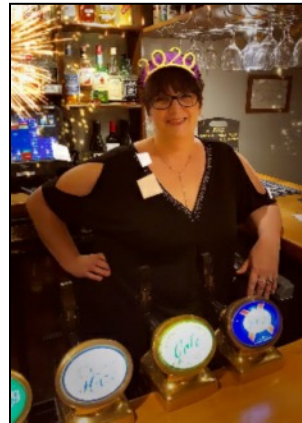
Carey and Mandy arrived in Kilmington in the autumn of 2014 to save the New Inn from a disastrous fall in customers. At first, for a couple of months, they were running the Axminster Inn in parallel with the New Inn, while Palmers found a new licensee for it. No need to say this was the busiest time for this trade coming up to Christmas, but they have always risen to the challenge - so they sailed through their first hurdle producing excellent Christmas dinners and always fresh beers.

Their arrival resurrected the pub from its previous state. It has been a hive of activity since, which included crib, the new darts team, skittles and boules. Not to mention the tremendous garden parties and BBQs where we could all enjoy socialising, eating, drinking and a good dance, bringing the local village community together. We all remember them very well, except Carey on occasions... They even organised the world-famous Wurzels to come to entertain us all.

The monthly quiz run by Clive was a great monthly draw and supported a lot of charities. Carey and Mandy have been very supportive and made sure they attended the quiz when they could and of course they tried very hard not to come last and to stay awake after a very busy previous week. Friday evenings were always welcomed as the Great British Meat-draw took place, which became a very competitive event for certain of the regulars...

On constant repetitive stories or politics, Carey would produce his hourglass egg timer to draw a very quick close to any unneeded conversations. The bar was always highlighted by his chalk board jokes situated in the bar to remind people they were there to enjoy themselves.

One of many Mandy's achievements was the very well supported Mamma Mia charity walk with the assistance of Millers and the Majorettes who encouraged everybody to sing and dance around the village. It was like the film re-



enacted all over again, people joining the dancing group along the way from their homes to enjoy the fun and music.

They always supported the Village Show, ensuring all the attendees were well watered whatever the weather.

Mandy made sure the menus changed regularly so we all came back to try and test the fresh cuisine and she constantly managed to achieve the highest hygiene rating.

During the very challenging Coronavirus times Mandy was still able to produce excellent takeaway menus including a full Sunday roast and desserts. They made sure all people isolated would receive it delivered to their door including a cask of Carey's fine ale if required.

As to Carey's cellar maintenance, he achieved the highest accolade in cellar management and fresh ale by being awarded 55 out of 55 on the Cask Marque score.

So what makes a good country pub?

It's a mixture of good ale, lager, wine and food – not forgetting sympathetic conversation and hospitality. Carey and Mandy achieved it all and managed to regain the total support of our village. They have been

excellent hosts during their time in the New Inn. Thanks – on behalf of all your customers!

From our personal perspective we gained a great friendship, lots of fun and laughter, a fantastic Barge weekend, creating the Sunday Club from the Coastal Path walking team, to an extended break in Vietnam and Thailand. You will be greatly missed but we are sure we can give you all our support in your new venture.

We wish you all the best and hope to welcome you back as fellow customers in the New Inn.

Lots of Love,

Krisztina and Paul Talbot xx

VILLAGE HALL

The Village Hall is all ready to welcome users back after the long closure because of Covid-19. You will find the hall is different. There is a one-way system in operation, and some signage to help with social distancing, hand sanitizers, etc. All the things we have become familiar with over the past few months.

At this stage a small number of regular user groups are planning to resume their activities and bookings will be subject to Government Regulations. For example, there must be limitations on the total number of people in the hall, masks must be worn and strict social distancing is required. Groups who have expressed an interest in re-starting their activities are in contact with Louise, our Bookings Secretary, and she will take you through the various pieces of paperwork which are necessary.

We hope very much that the user groups who return to use the hall in November will be followed by other groups in due course. However, the Covid situation is changing all the

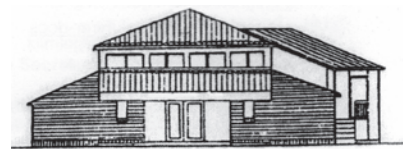
time and our planning may come to nothing if Government

Regulations change and we are required to close the Village Hall again. Let's hope this is not the case and that, very soon, the numbers of people using the hall will be back to normal.

OCTOBER/AUTUMN LUNCHES

It is with considerable sadness that we have decided it is not sensible to run the autumn lunches at the moment. Many of those who come to enjoy lunch in the hall and many who prepare and serve lunch fall into the Government's 'vulnerable' group. We hope to plan a get-together of some kind when conditions allow. In the meanwhile, stay healthy everyone.

Village Hall Committee



EVERY POPPY COUNTS

By the time you read this article the national Royal British Legion Poppy Appeal will have already got underway and you will have received a gift aid envelope with 2 poppies inside. Kilmington has always been very generous in supporting the Poppy Appeal, but because of Covid-19 we are restricted in the ways we can collect. We know supporting the Poppy Appeal is important to many of you and are therefore offering you a number of different ways you can support the appeal this year.

Traditional poppies are available at Millers Farm Shop, Starbucks, The Baptist Church, Kilmington Primary School and Texaco Garage. Metal 2020 pin badges and VE75 badges will be available at Millers Shop and the Baptist Church. Alternatively you can donate using one of the methods detailed below:

Complete the Gift Aid envelope, seal it with your donation inside and take it to the Baptist Church, Kilmington. A collection box will be available when the church is open or you can use the secure church letterbox.

Donate direct to the Royal British Legion at <https://www.britishlegion.org.uk/get-involved/poppy-appeal>.

By Text. To donate £2 text POPPY2 to 70545 or £5 text POPPY5 to 70545 or £10 text POPPY10 to 70545. Texts cost £2, £5 or £10 plus your standard network message rate.

Scan the QR code below to make a donation.

On Saturday, 7th November, our Chairman, Stafford Seward, will be touring the village in his 'gator utility vehicle' and will happily accept your donation. Social distancing measures will be in place.

Please support the Royal British Legion Poppy Appeal this year. We need your support more than ever. EVERY POPPY COUNTS.

Peter and Louise Wood
Kilmington RBL Poppy Appeal Organisers



FIVE ALIVE OIL SYNDICATE

The November deadline for ordering oil falls on Wednesday 25th and I would ask that members submit requests for either a specific amount or if ordering a 'top up' or a full tank, then please submit an accurate estimate as to what quantity you require with a minimum order of 500 litres in all cases.

Colin Stewart
01297 792538
cogstewart@aol.com
cogstewartcs@gmail.com



MIKE WALLER
OIL HEATING SERVICES
Experienced Engineer
Servicing Breakdown and Installations
AGAS Rayburns
and
Oil Boilers
Tel 01308 427638 Mob 07875 624 088



A fond goodbye to Mandy and Carey as they leave the New Inn

Below are some of the events that these two have kindly put on or taken their customers to over the last six years



Thank you from all your customers

November calls for winter warming recipes so here are three which I like to make at this time of year. The first recipe is for those who like to make a

homemade pie but don't want the fuss of making pastry. The sticky sausages are ideal to serve on Bonfire night whilst watching fireworks, although the recipe is so quick and easy that it was one of my son's staple snack recipes when he first went to Uni! The ginger cake recipe was a great find for me several years ago. My dad always enjoyed a slice of cake, but wasn't a lover of oversweet cakes filled with butter cream or covered in icing, but this ginger cake ticked all the boxes. It also has the benefit of keeping well, in fact it can be kept for a couple of days before cutting if you have enough discipline!



CHICKEN AND LEEK FILO PIE

Serves 4

75g/3oz butter
2 large leeks, finely sliced
2 large carrots, finely sliced
1 tbsp plain flour
400ml/14oz hot chicken stock
2 tsps Dijon mustard
3 tbsps double cream
500g/20oz chicken breast, cubed
2 tbsps olive oil
2 tbsps chopped fresh or frozen parsley
Salt and pepper
6 sheets of Filo pastry

Method

1. Heat 2 tbsps of oil in a frying pan, add the chicken and fully cook the chicken pieces. Once cooked, remove from the pan and leave to one side.
2. Melt 25g/1oz of the butter in a medium saucepan and cook the leeks and carrots over a low heat for about 15 minutes until softened but not coloured. Stir in the flour and cook for a minute. Gradually add the stock, stirring constantly, until the sauce is smooth and has thickened, then simmer for 5 minutes.
3. Stir in the mustard, double cream, chicken and parsley and then season with salt and pepper. Tip into a 1.7 litre/3pt ovenproof dish.
4. Melt the remaining butter in a pan or a microwave. Unroll the pastry sheets and cover with a clean, damp tea-towel. Taking one sheet at a time, cut in half and brush with butter and scrunch into a loose ball and place on top of the chicken mixture. Continue until all the pastry is used up.
5. Bake in a preheated oven, 200C/180C fan/Gas 6 for 25-30 minutes until the pastry is golden brown and the chicken mixture is piping hot. Serve with creamy mashed potato and vegetables of your choice.

STICKY SAUSAGES

30 cocktail sausages or 12 chipolata sausages, halved
1 tbsp. clear honey
1 tsp. wholegrain mustard
3 tbsps hoisin sauce
1 tbsps sesame seeds



Method

1. Mix the Hoisin sauce, honey, mustard and sesame seeds together in a bowl. Add the sausages and toss well to make sure all the sausages are coated.
2. Line a baking tray with foil and spoon on the sausages, spacing them well apart. Spoon any remaining sauce over the sausages.
3. Cook in a preheated oven, 190C/170C fan /Gas 5, for 20-25 minutes.
4. Serve on wooden cocktail sticks as party food. Alternatively serve in brioche buns or with jacket potatoes



TRADITIONAL STICKY GINGER CAKE

Makes 1 large loaf

225g/9oz self-raising flour
1 tsp bicarbonate of soda
1 tbsp ground ginger
1 tsp ground cinnamon
1 tsp ground mixed spice
100g/4 oz cold unsalted butter cut into cubes
100g/4oz black treacle
100g/4oz golden syrup
100g/4 oz light muscovado sugar
1 egg
275ml milk

Method

1. Sieve the flour, bicarb, ginger, cinnamon and mixed spice into a bowl. Add the butter and rub in until it resembles fine breadcrumbs.
2. Melt the treacle and the syrup in a saucepan over a low heat and then allow to cool to room temperature.
3. In another saucepan dissolve the sugar in the milk over a low heat.
4. Whisk the milk/sugar mixture into the dry ingredients followed by the treacle/syrup mixture. Finally add the egg. At this stage, the mixture should resemble a thin batter.
5. Pour into a greased and base lined 900g/2lb loaf tin. Cook at fan 200C/180C fan/Gas 6 for 40-50 minutes or until a skewer inserted into the centre of the cake comes out clean.
6. Cool in the tin completely before lifting out.

Diane Overton

ROYAL BRITISH LEGION KILMINGTON BRANCH

REMEMBRANCE

We hope this finds you all well, in good spirits and of course protecting yourselves from the dreaded Coronavirus. You will be pleased to note that Kilmingston RBL has held its first Zoom Annual General Meeting on Friday, 2nd October, which went extremely well, although we did miss some of those who would have normally attended. My thanks to those who did join us on Zoom and also to the Committee for providing timely and accurate reports (a copy of the minutes is available on the Kilmingston website). As we write, our thoughts are towards all those who are suffering from illness and, of course, the families and friends who provide such essential support. As we enter the winter months, may I urge you all to continue support and dialogue with our less mobile members, but also friends and neighbours who may feel particularly vulnerable in the current climate. Of course November is the time when we remember all those who have paid the ultimate sacrifice for our country and we will hold a brief Remembrance Service at the War Memorial followed by the act of Remembrance on Sunday, 8th November at 10.45 am. For those attending, please remember that self-distancing rules will apply and that we will ask you to fill in a form of attendance for 'track and trace' purposes which will be disposed of immediately after the nominated period. In continuation, we will also be marking the 11th November with maroons at the cricket field. Unfortunately there will be no refreshments and again self-distancing rules will apply. I hope that by the time you read this you will have been able to procure your poppy, however, if not and you feel that you do not want to venture out, please be reminded that we will be passing through the village in the 'Gator' on Saturday, 7th November and poppies will be available, as well as a post box for any donations (similar to the collection of green waste). This year, we would also like to encourage our younger residents to be involved in Remembrance. Some of our readers suggested providing an outline of a poppy which could be coloured in and placed in a window, showing support. To this end, in this edition you will find a poppy (see page 17) that can be coloured and displayed. Of course this is not just restricted to our younger readers! We look forward to seeing your poppy.



ideas or wishes of how we might mark either of these events, please do not hesitate to contact us.

Before I sign off, I would like to take the opportunity to thank the Committee and all those who supported a nomination for me to receive a National Award for support during the COVID lock-down, in particular for 'Creative Fundraising' (VE Day Green Waste Collection). I had no knowledge of this and when I received an e-mail informing me of my nomination, I reported it as 'phishing scam'!! I am delighted, however, to say that 'I/We Kilmingston' won the award which was presented to me during a 'virtual' awards ceremony by Alastair Stewart, the News Reader. Thank you all so much for nominating me for this award, it is truly a huge honour.



As always, we continue to seek new members, so please don't hesitate, come and join us.

Cdr Staff Seward OBE RN Rtd
Chairman RBL Kilmingston Branch

LOOKING FOR A NEW DRIVEWAY, PATHWAY, PATIO?

Family-Run Business est. 2015

I strongly recommend you use a member of HICS

HICS

Resin and Tarmac contractors
No Subcontractors used
Eco-friendly systems available

WORKMANSHIP AND PRODUCT GUARANTEE

UNIT 1A, WOODLEYS DRIVE, EXETER RD.
NEWTON POPPLEFORD EX10 0BJ

01395 567 071

www.drivewaytransformations.co.uk

PLEASE CALL OR VISIT OUR WEBSITE FOR
OUR FULL RANGE OF SERVICES

The current restrictions continue to impact our programme, however, we are still hoping to hold our 'A Taste of Christmas' in an open market format in the Village Hall Car Park on Saturday, 5th December and it would be fantastic to see you all, albeit of course at a safe distance!! More details will be revealed in the December's issue of Postscript.

As previously stated, we hope that we will be able to resume our normal programme of events as soon as possible. Next year is the 100th Anniversary of the Royal British Legion and we are progressing ideas of how we will celebrate this memorable event. It is also the 100th anniversary marking the erection of our own War Memorial, so if anyone has any

MAD moments in the garden

So, as promised last month, an article about vegetable growing, or rather my vegetable growing, success in terms of choice and productivity and lessons learnt this year.

You may remember from a previous article that I based my choices this year on what I wanted to eat and the cost benefit of the vegetables.

One minor success has been the Banana Shallots. I could, as my school reports used to say, do better though. I didn't plant enough and planted them too far apart. So early next year when I sow the seed I will put three seeds per module in the seed tray. Then when germinated I will plant them out as closely planted groups and see if that produces more shallots from a smaller area.

I had imagined that as the rest of the vegetable beds began to look a bit empty there would be one raised bed full of beautiful orange pumpkins and squashes, all looking splendid in the early autumn sun along with providing a tasty crop as a bonus. No such luck! The plants started life in the greenhouse and looked healthy and strong when planted out. Sadly they failed to flourish, looking annoyingly and increasingly scrappy. This was, I think, due to not rich enough soil and my failure to water at an early stage. Many years ago when I ran an allotment in Bristol I was told by a seasoned allotment owner that it was not a good idea to water. This was music to my ears, the rationale was that the roots would grow down to find water and by watering from above the roots stayed closer to the surface, resulting in the plant being less stable and the need to maintain watering throughout the season. This seemed great advice for my busy life, plus the fact the water tap was some distance from my plot! You do, however, need to water plants that are recently planted generously, particularly in dry conditions, to help them establish a good root system. I clearly abandoned mine too early.

More positively, Mangetout Oregon Sweet were really good and I would highly recommend this particular variety. Next

year I will try to do three sowings throughout the season to keep a good supply. The grandchildren ate a lot of this year's crop before they even got in to the house! Climbing French beans, again two great varieties, the flat podded *Helga* and the round podded *Cobra* were very productive and tasty. I will try to sow two plantings of each to provide supplies through the season.

I often wonder why I bother with lettuce, they all come at the same time and before you know it have bolted and are only good for friends' chickens. This year's crop has been more successful with some early Little Gem which I love quartered lengthways and simply dressed or cooked with early peas. The best new discovery was a variety called Lettuce Maravilla de Verano, it has lovely bright green leaves tinged with red so looks beautiful and tastes absolutely delicious, crunchy sweet, and I still have a couple to pick even now. They are quite hearty so don't seem to get too muddy and slug damage is not in evidence. I will certainly grow more next year with successional sowings to see if they do as well early as they do late in the season. I am very proud of the *Palla Rosa* a Red Headed Chicory that is producing lovely tight red shiny balls as I write, more recognizable as Radicchio. It will apparently keep going until the frosts when I can cut it and it will store well in a cool dark place. On my list for planting many more next year

Favourite and prolific tomatoes were a vine variety *Chocolate Cherry*, an uninspiring name for a great tasting very prolific tomato for the greenhouse. The best bush tomato for outside was *Ubikany*; and *Sungold*, an old favourite which I plant in a grow bag within the cold frame where it does its own thing, sprawling in all directions and producing masses of small, delicious yellow fruit over a long period of time.

I am looking forward to next year's veg growing already!

Mary-Ann Driscoll



KILMINGTON GARDENING CLUB - UPDATE

As I am writing this article, we are currently awaiting news as to whether we may be able to resume some of our planned events.

The committee were able to hold a meeting via Zoom, which ensured we were able to communicate with each other whilst being socially distanced. In the last edition of Postscript, I informed you that our planned AGM set for November has been cancelled. However, we are still hoping that we will be able to hold a meeting of some sort in November. Due to the changes taking place, numbers will be limited and there will obviously be differences in the way we manage and organise any such event.

We are continuing to monitor the changing situation. All members will be kept informed of the decisions made by your committee, as soon as possible. I do hope that the next update I write will be more positive and upbeat. Hopefully, we will soon be able to resume more normal methods of meeting.

All members will be informed of our plans when confirmed by email or post, together with news on our website: info@kvpa.co.uk If not a member, please feel free to visit our website to read some excellent articles on gardening news.

Meanwhile please keep safe and well, both in your gardens, as well as when out and about.

Gill Gibbs

AERIALS & CABLES
AERIAL REPAIRS & INSTALLATIONS
Digital Upgrade
FM • Multi-Points
Free Estimates
0781 4481 833

AXMINSTER AND LYME CANCER SUPPORT



In Newsletter no 25 'Autumn Days' ALCS thanks the community for donations and valued support, which enable it to continue providing helpful services. The weekly drop-in sessions are from 2.00-3.00 pm on Zoom each Monday, where participants can share stories, swap ideas and offer support. Anyone is welcome to join free. Therapists talk about the treatments they offer and there will be some guest speakers in the coming weeks.

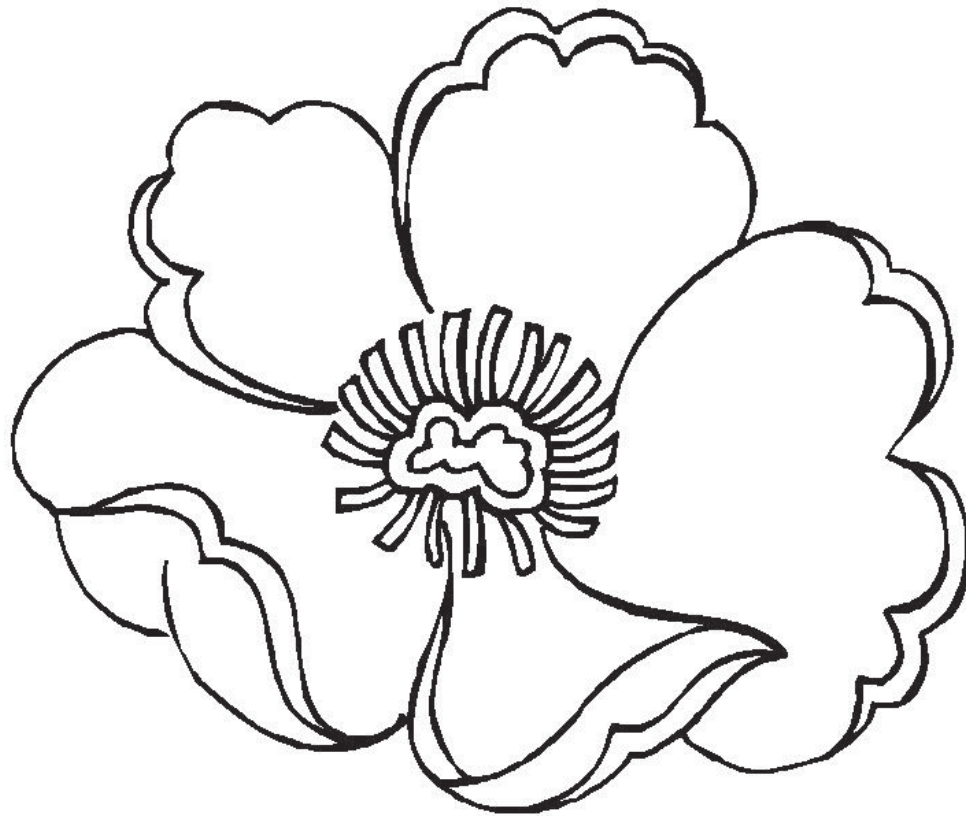
The beach hut is being well used and they are taking bookings, also free, via the website until 31st January. They note that it is being cleaned regularly by their small team of volunteers. The online shop has special offers, including Christmas cards and some free delivery and you can browse their items online. Nordic Walking in the countryside is also available and ALCS offers to cover the cost of one session per week for anyone interested. Vouchers and more

information can be obtained via the website.

The newsletter also mentions classes in Yoga (by Zoom) and creative writing. It acknowledges and thanks Tesco Bags of Help and the Co-op Local Community Fund as well as all the retailers involved in the Easyfundraising scheme, which can raise a free donation for ALCS every time you shop. Finally it includes a section listing services provided by MacMillan and provides links to reach them online.

ALCS is not exclusively online. If you would like to read ALCS newsletters in full, be added to their mailing list or find out more, there are other options too. Email: info@axminsterandlymecancersupport.co.uk Tel: 07512 279663

Mailing address: Heathermoor, Yawl Hill Lane, Yawl, DT7



Lest We
Forget



Are you worried about your Tax Returns?

We provide a friendly, professional service for self assessment returns, business accounts and all aspects of taxation based on experience, qualifications and confidentiality.

HOME VISITS AVAILABLE

For an initial free meeting please telephone our office and ask to speak to Hayley Perham (Taxation Director) or email: crwaccountants@btconnect.com

Telephone 01297 553286

The Personal, Professional approach to Taxation, providing "Peace of Mind"

CRW Accountants Ltd
The Mews, Queen Street, Colyton, Devon
EX24 6JU
www.crwaccountants.co.uk

Stuart's Sweeping Service

Your local chimney sweep



07432 118318 or 01404 831288

Evening and weekend appointments available.

CLIMAX
DOORS & CONSERVATORIES
ESTABLISHED 1979

INSTALLERS OF QUALITY
WINDOWS



YOU deserve the very best
so choose a
Quality made product from



CLIMAX WINDOWS

The No: 1 local company

FREE PHONE 0800 71 63 63
SHOWROOM CASTLE HILL WORKS
CASTLE HILL AXMINSTER 01297 35053
ALSO TILES AND CONSERVATORY FURNITURE

KILMINGTON CROSS SERVICES

(PETROL STATION)

Tel. No: 01297 631089

MILK : NEWSPAPERS : HOT SNACKS :
GROCERIES
HOUSEHOLD ITEMS:
COAL: CALOR GAS
PHOTOCOPYING : OFF LICENCE
PAY POINT : E-TOP UP: GAS & ELECTRIC:
JET WASH

OPENING HOURS

Monday-Saturday 6.00 am - 10.00 pm
Sunday 7.00 am - 10.00 pm



Kilminster, Axminster

- Coffee, Latte, Cappuccino, Tea and all type of drinks
- Variety of Cakes
- Breakfast available all day, prices start from £5.95
- Starters and Main Meals
- Desserts and Ice Creams



- Every Sunday Carvery £10.95
12.00pm until 3.00pm



- B&B Rooms available
- Single, Double, Twin & Family Rooms
- All rooms are En-suite
- Rooms available from £49.00



- Function Room – Free of Charge



Call 01297598060



Based in Kilminster & providing all aspects of **Repair, Refurbishment & Renovation.** Including (but not limited to!):

- ✓ General Building Repair and Maintenance
- ✓ Bathroom and Kitchen Remodelling
- ✓ Interior and Exterior Decorating
- ✓ Regular Garden Maintenance
- ✓ Landscaping and Minor Construction
- ✓ Flat-pack Construction (no more frustration!)
- ✓ A lot more - just ask!

Call **Simon** on **07939 242 101** or email **simon@bpmaintenance.co.uk**
www.bpmaintenance.co.uk

"A friendly and efficient service, available in East Devon and West Dorset"

§Khushi Kitchen

Fancy a **HOMEMADE** local curry?
 Then why not try a §Khushi authentic curry experience.

- ❖ Kilminster's Friday curry takeaway
- ❖ Fresh Frozen Curries available **EVERYDAY** @ The Old Barn (honesty box system)
- ❖ Catering for all occasions, please enquire for a personalised menu

Email: mina@khushi.kitchen

Web: <http://khushi.kitchen>

Addr: The Old Barn, The Street, Kilminster EX13 7RJ



khushi kitchen-axminster devon & dorset

Check the website regularly for §Khushi's future events and pop-up kitchens.

Mina x



Scott Rowe

Solicitors

TAKING CARE OF YOUR LEGAL NEEDS

Lexcel
 Practice Management Standard
 Law Society Accredited



INVESTORS IN PEOPLE
 We invest in people Standard

- Buying & Selling Property
- Business Issues
- Agricultural Issues
- Wills
- Powers of Attorney
- Trusts & Estates
- Matrimonial and Family
- Resolving Disputes
- Negligence Claims
- Employment
- Debt Recovery

Axminster
 01297 32345

Chard
 01460 63336

Lyme Regis
 01297 443777

www.scottrowe.co.uk

Rob Perry

Garden Machinery

Lawn Mowers & Power Equipment

Leaf blowers in stock
 at our

local **showroom**

The Boating Centre
 Axminster EX13 5ST

Authorised
 Dealers

TIGA



t: 01297 631314

e: sales@robperrygardenmachinery.co.uk

www.robperrygardenmachinery.co.uk

Advice

Sales

Service

AXMINSTER PRINTING CO LTD 01297 32266

Not just a Printing Company...

Established in 1969



PRINTING & DESIGN SERVICES

Leaflets, Posters, Booklets, Books, Labels, Tags, Menus, Banners, Magazines, Canvas's, Order of Services, Headings, Business Cards, Appointment Cards, Compliment Slips, Headed Cards, Bookmarks, Invoice and Order Forms, Delivery Forms, Folders, Vouchers, Loyalty Cards, Wedding and Business Stationery, Plans, Prints (any Size up to A0) and so much More....



STATIONERS

- Stationery for School or College
- Postage and Packaging Supplies
- Filing Products
- Paper, Writing and Drawing Instruments
- Notebooks & Invoice Books



ARTS & CRAFTS SUPPLIES

We have a range of card making supplies from firms such as Hunky Dory, Trimcraft and Crafts Too - from card blanks, card toppers, glitters, printed papers, rubber stamps and stamping accessories.



Website: www.axminsterprinting.co.uk Email: sales@axminsterprinting.co.uk

Address: Axminster Printing Co. Ltd, West Street, Axminster, Devon EX13 5NU

Vintage Engineering

An engineering company with a difference, We cater for the one offs and bespoke items, in Metal (welding and fabrication) wood, and mechanical objects.

We restore Vintage/Classic cars and motor bikes, M.O.T Welding, repair gates, stairs, individual items, make new objects in steel, stainless and aluminium and manufacture or repair wood and mechanical items.



Do you have those broken or damaged objects that you need repairing or replacing that will not cost the earth, and those home repairs or builds that no one seems interested in, we can give you a cost to do those things you just want sorting.

Call 07917765978 -

Whitchurch Canonorum

vintageengineering.co.uk

Chris Stubbs Electrical

Est 1981

OFFICE ADDRESS: UNIT 2,
THE ASSEMBLY ROOMS,
GUNDRY LANE, BRIDPORT,
DORSET, DT6 3RL

Bridport Office No. 01308 422726

Kilmington Home No. 01297 631244

Mobile No. 07836 247294

email: StubbsChris@hotmail.com

**"For a friendly service
at a competitive price call us today"**



GREEN MACHINES

Mobile Garden Machinery Repair

FORMERLY DAVID GEAR HORTICULTURAL

Oliver Newton

**Service & Repair of all
Garden Machinery**

**Call Oliver Today!
01297 23913**



www.hunthay.co.uk

Secure Containerised Self Storage

Suit Business or Domestic use

Caravan + Motorhome Storage

Industrial + Starter units

Easy, long day & weekend access

Owner lives on site

Close to A35

jenny@hunthay.co.uk

Phone: 01297 33839 / 07779 550771

Tim Whitehead

**Lyme and Axe Vale Property
Caretaking and Maintenance.
Interior, Exterior, Home and
Garden.**

**Repairs, Decorating, Handyman
and Gardening Services.**

**Honesty, Reliability and Value
Guaranteed.**

**DBS Checked, Fully Insured
and LOCAL.**

(01297) 33023 or 07967 915302

axevalehandyman@btinternet.com



musicseeds



This music class in Colyton, is perfect for children aged 1 to 3. Run by a teacher and musician, it is a great grounding in music for the little ones, and also lots of fun!

Singing, games, movement,
playing percussion.

9.30 – 10 am, Thursday

Reece Strawbridge Centre, Colyton

See musicseeds.co.uk for more details

Or contact Leah Stonex on
07850 157520

leah@musicseeds.co.uk



TREELINE
Arboriculture

Environmentally Sustainable Tree Surgery

Friendly &
Kilmington Based

Environmentally
sustainable

Fully insured &
City and Guilds qualified

Quiet, up to date
practices

07754 582 112 | treelinetom@gmail.com



DATES FOR NOVEMBER 2020

Sun	8th	10.45 am	War Memorial	Remembrance Sunday - A short service at the War Memorial followed by the Act of Remembrance
Tues	10th	Early	Your House	Garden Waste Collection
	10th	9.30 am	St Giles' Church	Holy Communion
Wed	11th	11.00 M	Playing Field	Armistice Day Maroons at the Pavilion
Mon	16th	Early	Your House	Landfill with recycling
Tues	24th	Early	Your House	Garden Waste Collection
	24th	9.30 am	St Giles' Church	Holy Communion

eyecatching

DRESSMAKING AND DESIGN

in Kilminster Village

Discuss your requirement with Rosemary
Tel. 01297 639270



Home Sweet Home
Reliable, Friendly Cleaning Services
Domestic Dwellings to B&B and
Holiday Accommodation

10 Years' Cleaning Experience
Call Helen on 07752081433
Elderly Friendly

NIGEL PHILLIPS GARDENING SERVICES

Does your garden need a good tidy

READY FOR AUTUMN

Phone Nigel Phillips 01297 35302

Also regular grass cutting and up-keep all year. Friendly local service.



Stuart Cloud

30 Lea Combe
Axminster
Devon EX13 5LJ

T: 01297 32754

M: 07894 707303

E: cloudflooring@gmail.com

CARPET FITTING
VINYL
VINYL TILES
WOODEN FLOORING

SUDOKU SOLUTION

9	6	1	5	8	7	2	4	3
2	8	3	1	4	9	7	5	6
7	4	5	3	6	2	8	1	9
5	3	7	9	1	6	4	2	8
8	9	6	2	5	4	3	7	1
1	2	4	7	3	8	6	9	5
4	5	9	8	2	3	1	6	7
3	1	2	6	7	5	9	8	4
6	7	8	4	9	1	5	3	2

DONATIONS, PAYMENT FOR ADVERTISING SPACE AND ARTICLES/NOTICES FOR POSTSCRIPT (i.e. THOSE NOT SENT BY EMAIL)

It has been necessary to set up alternative arrangements following the closure of the village shop.

DIRECTIONS FOR FINDING Vicky Larcombe's house. Vicky is treasurer for Postscript.

From Whitford Road turn left and walk up The Street, passing Koppers, Kushi Kitchen, the Bull Pen and West Gate on your right. The next house is **Brookside** where Mrs Vicky Larcombe lives. If you find yourself crossing Meadow Bank, you have gone a few steps too far.

Please post payments for advertising in Postscript and donations to help with printing costs
through the front door of Vicky Larcombe's house. Thank you.

USEFUL TELEPHONE NUMBERS

VILLAGE NUMBERS

Bell-ringing - Celia Dunsford	01297 33563	Kilminster's Little Helpers - Sally Huscroft	01297 32243	Short Mat Bowls - Ron Foster	01297 35529
Bridge - David & Stephanie	01297 35033	Kilminster Pre-School - Now part of primary school	01297 32762	Sunday School - Christine Thorne	07795 552675
Country Dancing - Gill Perkins - Marie Thorne	01297 32888 01297 33906	Kilminster Primary School	01297 32762	Table Tennis - Jenny Nickolls	01297 639758
Cricket - David Lavender	01297 631868	Millers Farm Shop	01297 35290	Tennis - Sue Moore Sue Wells	01297 32361 07912 272102
Footpath co-ordinator - Elaine Penzer	01297 34287	Moviola - John Watts	01297 639758	Village Hall bookings - Louise Quincey	01297 32358
Hitchcock Pavilion bookings - Peter Huscroft	01297 32243	The New Inn	01297 33376	Village 100+ Club - Jean Falconer	01297 33708
Kilminster A35 Pit Stop	01297 598060	The Old Inn	01297 32096	www.kilminstervillage.com - Luke & Maxine Lawson	07719 909532
Kilminster Cross Services	01297 631089	RBL - Jean Falconer - Sec Stafford Seward - Chairman	01297 33708 01297 33909		
KGC - Jean Falconer, Secretary	01297 33708	Scrabble - Sylvia Newbery	01297 34326		

MEDICAL AND SUPPORT

Axminster Hospital	01297 630400	'Devon Doctors on call' (Out of hours GP service)	0845 6710270	Veterinary Surgery	01297 630500
St Thomas Court Surgery	01297 32126	Dentist Helpline	03330 063300		

SERVICES AND FACILITIES

Refuse Collection	01395 571515	Axminster Library	01297 32693	Clerk to the Parish Council	07800 826657
Water - general - leaks	0344 346 2020 0800 230 0561	Mobile Library	01404 42818	E. Devon District Councillor - Iain Chubb	01297 35468
Electricity - emergency	0800 365 900	Ring & Ride	01404 46520	Devon County Council, Whimble and Blackdown, Iain Chubb	07932 459595
		Axminster Care Service	01297 35550		

Police: Crime stoppers - 0800 555111; Emergency - 999; General - 101

CHURCHES

St Giles' Church Pastoral teams	01297 33777	Baptist Church Office Pastor Darrell Holmes	01297 631638	Axminster Catholic Church Parish Priest: Father Anthony Cockram	01297 32135
---	-------------	---	--------------	--	-------------

ADVERTISING IN POSTSCRIPT

Postscript is published ten times each year and is delivered free of charge to every house in Kilminster. All advertising fees and donations to Postscript are used to meet the cost of printing. ALL advertisements which are set out, from any source, are chargeable as follows and must be paid for in advance.

	Black and white ads	Colour ads
Credit card (70 mm x 40 mm)	£ 5 or £22.50 for 5 months	
¼ page (90 wide x 136 mm high - Portrait)	£12 for one-off or £50 for 5 months	£15 for one-off or £75 for 5 months
½ page (184 x 136 or 90 x 276 mm)	£20 or £90 for 5 months	£30 for one-off
Full page (184 x 276 mm)	£30 or £130 for 5 months	£40 for one-off

If the advertisement could be sent as a jpeg it is a great help when sizing for publication.

BACK COVER: *Occasionally the back cover is available for a one-off colour page advertisement. Cost: £50*

Additional fee of £1 if Postscript has to edit, size or set copy.

PAYMENT: Cheques should be made payable to: Kilminster Postscript and posted to: **Mrs V. Larcombe, Brookside, The Street, Kilminster, EX13 7RJ.** BACS account name is **Kilminster Postscript**, sort code: **51.61.23**, account no: **18159400**

COMING AND GOING FOR A SONG: There is no charge for these entries for items valued up to £20 or less. However, donations are appreciated - these can be popped through Vicky Larcombe's door (please see directions on page 22).

Autumn is here in Kilmington

