



KILMINGTON

# POSTscript

Issue 249 November 2022

---

## EDITORIAL

The last sounds of the marching bands have died away, the coffin bearers' perfectly choreographed routines were all carried out impeccably and the representatives of the armed forces can return to the less glamorous side of peacekeeping and modern soldiering – until next May, when they will dress up and march around all over again for the Coronation. Meanwhile the rest of us settle back to everyday life with whatever new ripples may disturb it this coming winter.

It seems likely that the cost of living will loom large. The two Kilminster churches, in collaboration with the Parish Council, are anticipating people's winter problems with heating and are jointly making plans to offer help by providing warm spaces with free refreshments. The planning is at an early stage and they are still seeking more ideas and initiatives but this village is adept at providing an imaginative response to a crisis. (Remember the snow wardens who sat at the open back doors of a van, legs dangling, throwing out handfuls of sand as it drove slowly along the slippery lanes, the farmers with snow ploughs, prescriptions delivered by tractor and the ladies who provided the snowed-in housebound with homemade soup originally intended for the Lent lunches in the Village Hall, cancelled by the visitation of the Beast from the East.)

This month we have the usual mention of the 100+ Club, which contributes to the maintenance of the Village Hall, and the flyer for the next KCC film to be shown there. Regulars at the New Inn bid farewell to the landlord, Steve, and wish him well. We thank Celia for her Autumn photos and note that she is also starting a handbell group which will aim to manage some carol tunes by Christmas. The RBL reminds us of the forthcoming Remembrance ceremonies in November and the Christmas Fair early in December. The Common has been mown, as part of the management for its restoration as a wildflower area. Now they need volunteers to help with bagging up. Judith Simpson also reminds us of the whole point of the COP26 for which she walked to Glasgow last year, which is in danger of getting lost among other concerns.

Flamingo Pool in Axminster is already facing difficulties with heating costs and struggling to keep this important amenity open. Its new committee hope to send us updates on their progress in the coming months. A speed watch is planned, to support the proposed '20's plenty' campaign and National Highways are working on an A35 improvement plan which we hope may benefit Kilminster. There is an explanation of the activities and aims of the new Kilminster Community Association which definitely will.

Janfryd

Front Page - Marie Gardner

## CONTRIBUTIONS TO POSTSCRIPT

Please remember to use the email address for Postscript:

**postscript@kilminstervillage.com**

*Alternatively, please give your item to any team member.*

***The closing date for submitting items for the December issue is 15<sup>th</sup> November 2022. All will be acknowledged. Please email or ring 01297 639115 if not acknowledged within 48 hours.***

## POSTSCRIPT TEAM

### Editor

Janfryd Gordon-Kerr 01297 639115  
janfryd@gordon-kerr.org.uk

### Team

Peter Ball 01297 32631  
mycraigdon@aol.com

Valerie Harding 01297 34206  
vharding38@gmail.com

Jill Collier 01297 32390  
summerleaze@hotmail.co.uk

Gill Heighway 01297 33951  
gillheighway@gmail.com

Marie Gardner  
m.gardner6819@gmail.com

Gill Perkins 01297 32888  
john.perkins444@btinternet.com

### Distribution

Diane Overton 01297 33569  
diane.overton@outlook.com

### Treasurer

Vicky Larcombe 01297 33858  
vlarcombe30@aol.com

### Postal address

The Granary, George Lane, Kilminster, EX13 7RT

Printed by Axminster Printing  
01297 32266

**Postscript** is published 10 times each year and is delivered free of charge to every house in Kilminster. Almost all items in the magazine come from the village community who are very supportive of the magazine.

The Postscript team are all volunteers and your donations, together with fees from advertisers, are used to pay for the cost of printing.

## DONATIONS

***Arrangements for donating to Postscript have changed as a result of the closure of the village shop. Please see page 30 for details. Donations to the middle of September came to £16.00. All donations go towards printing costs. Thank you for your continuing support.***

## ADVERTISING RATES

Please see inside back cover for details.

The average cost per 28-page copy of Postscript with several colour pages is 75p.  
Extra copies are available from Millers Farm Shop, where donations may be made.

**Disclaimers:** Items in this publication are the work of individuals and do not necessarily reflect the thoughts or opinions of the editorial team. The editorial team reserves the right to make small alterations to items submitted. Contributors are responsible for ensuring that parental permission has been obtained before pictures of children are submitted for publication.

The content of advertisements is not the responsibility of the editorial team. Queries should be addressed to the advertiser. This publication is online at [www.kilminstervillage.com](http://www.kilminstervillage.com). In addition, earlier issues will also appear online from time to time.



# NATURE NOTES

## THE COMMON

At last, we can resume work on THE COMMON. We're excited about that.

David and I have been fully occupied over the summer months with caring for our grandchildren and their move to Kilminster. Now they're settled in our excellent, village school we can once again get stuck into all the practical work that needs to be done on The Common over the Autumn and Winter months.

We are also more confident of the long-term prospects for The Common. There is now a much better understanding with the Parish Council of the essential management that will need to take place to ensure its restoration. The long-term plan should ensure once again that we will all be able to enjoy the beautiful flowers, insects and other life special to The Common.

You may have noticed that the central area has recently been expertly cut by Stafford. The first of the work parties will be to rake and bag up the mowings. There will be many more work parties to come, and details will be posted in the

Postscript and on Kilminster Now. Enthusiasm is the main requirement. There will be both midweek and weekend work parties, so hopefully that will allow many of you to join us, whatever age you are.

We look forward to seeing you there – bring along stout gloves and sturdy rakes. The Parish Council has purchased a number of tools which you'll also be able to use.

As before, coffee and biscuits will be available.

Thanks particularly to Peter, chair of Kilminster Parish Council, as well as Pete Youngman and Ruth Worsley of East Devon AONB for their encouragement and moving the plans for The Common forward.

If you want to come along and join us, just email or give me a call.

Judith Simpson  
simpsonjudith71@gmail.com  
01297 32694

---

## ONE YEAR ON FROM COP26

It was a year ago that I set off from Kilminster to walk to COP26 in Glasgow.

My hope at that time, as well as that of countless others the world over, had been that governments would sign up to meaningful action to reduce CO2 emissions, reduce fossil fuel consumption and to begin to reverse the frightening reduction in our planet's biodiversity.

The news over the past months has been about politics and economics, precious little about climate change and the challenges of living in an ever-heating world. We all experienced the heat and drought of these summer months. We have seen and read about increasing extreme weather events the world over. Climate change is here, we are getting more of a taste of how it feels.

The government is in disarray and is not only not attending COP27 in Egypt, but is wavering in its commitments towards achieving net zero. There are a number of organisations that are challenging the continuing inaction of government and trying to ensure that they do indeed honour their commitments - RSPB, National Trust, Wild Justice, Friends of the Earth, Client Earth – support them if you can.

All of these factors have been brought into even sharper focus for me over the past months with a massive change in our family and now being full time carers for two of our grandchildren, they, along with all of our young people, will inherit the unfolding crises!

Judith Simpson

---

## KILMINGTON PLAYERS PANTOMIME 2023

### Your village panto needs you!

It's not too late to join in. No experience is necessary just plenty of enthusiasm.

We are looking for adults and children (7+) for the chorus, plus main parts, help with scenery, costumes, backstage etc. Rehearsals will begin in early November so come and join in the fun!

Get in touch with Louise on 01297 32358 to find out more.

Louise Quincey

---

## PARISH COUNCIL MEETING

The Parish Council meeting is on Monday, 14<sup>th</sup> November at 7.30 pm in the Village Hall.

# WHAT'S ON IN NOVEMBER

## KILMINGTON COMMUNITY CINEMA



### OPERATION MINCEMEAT (12A)

Kilminster Village Hall

Wednesday, 9<sup>th</sup> November &  
Thursday, 10<sup>th</sup> Matinee



Operation Mincemeat was the bizarre real-life scheme cooked up by British intelligence in 1943 to fool Nazi Germany into thinking the allies planned to invade Greece and Sardinia, rather than their actual target, Sicily. The corpse of a tramp was dressed up as fictitious 'Capt. William Martin' and carried elaborate bogus plans for this nonexistent invasion; the body was dumped into the sea so that it would wash up in Spain where the British were confident this phony intelligence would be obediently passed to the Germans.

It was a bold and hugely dangerous strategy, not least because invading Sicily – seen as the soft underbelly of Europe – was exactly what Hitler expected the Allies to do. So, somehow, German high command had to be persuaded that the Allies' objectives lay elsewhere... which is where Operation Mincemeat, the name of a top-secret intelligence plan and the new film it has now inspired, comes in.

The star-studded film, which at times seems to have employed just about every character actor on British Equity's books, is seriously classy, with a cast led by Colin Firth, Matthew Macfadyen and Kelly Macdonald.

Wednesday: Doors open at 6.45 pm with the evening's entertainment starting at 7.15 pm and ending about 9.30 pm.

The Thursday matinee: Doors open 1.45 pm, film starts 2.00 pm. Come along and enjoy a film and have a cream tea/ice creams/tea/coffee, during the interval. The cream tea must be booked when booking the seat at a cost of £3. Please state Wednesday or Thursday when booking. Tickets: pre-booked £5 or £5.50 on door.

To book please contact: John Watts on 01297 639758, or email: [wattsjohn307@gmail.com](mailto:wattsjohn307@gmail.com)

See <http://www.kilminstervillage.com/moviola.html> for more information.

*December Film: Railway Children Return*

## HAND BELLS REHEARSALS

## KILMINGTON GARDENING CLUB

Hello everyone. We will have a very warm welcome to anyone who would like to join us at St Giles' Church on Saturday, October 29<sup>th</sup> between 10.00 am to 12.00 noon, for our first Handbell meeting. We will have subsequent meetings on Saturday mornings leading up to Christmas.

Rob Stacey will be leading this with his own set of handbells and with his experience, I am sure it will be fun as well as informative. There will be coffee/tea/juice and biscuits available too! We hope you will be able to join us.

Carols here we come!!

Celia Dunsford  
01297 33563  
07985 268656

On Friday, 11<sup>th</sup> November the AGM will take place in the Village Hall starting at 6.30 pm. This will be followed by a social evening.

## MOBILE LIBRARY

Tuesday, 1<sup>st</sup> and 29<sup>th</sup> November 2022 at 11.20 - 11.50 am The Street

# WHAT'S ON IN NOVEMBER

## KILMINGTON SKY AT NIGHT

Another month with plenty to see in our dark skies: we get four meteor showers, so look out for 'shooting stars'. Throughout the month **Saturn, Jupiter** and **Mars** can be seen in our evening sky. **Venus** is below our horizon during the night throughout the month, so cannot be seen and pops up in our southern sky first thing at dawn.

**1<sup>st</sup> Moon and Saturn** appear close together this evening, in the southern sky.

**4<sup>th</sup> Moon and Jupiter** appear close together this evening, rising around dusk in the east.

**8<sup>th</sup> Full Beaver Moon**

**11<sup>th</sup> Moon and Mars** appear close together, rising in the north east around 6:00 pm.

**12<sup>th</sup> Taurids Meteor Shower** is a long-running minor meteor shower, about 5-10 meteors per hour. It runs annually from October 20<sup>th</sup> to December 10<sup>th</sup>. It peaks this year on the night of November 12<sup>th</sup>. Best viewing will be just after dusk from a dark location far away from lights.

Meteors will radiate from the constellation Taurus, but can appear anywhere in the sky.

**17<sup>th</sup> Leonids Meteor Shower** is an average shower, up to 15 meteors per hour at its peak, produced by dust grains left behind by comet Tempel-Tuttle, which was discovered in 1865. It runs annually from November 6<sup>th</sup> to 30<sup>th</sup>. It can be seen above the eastern horizon between 10.30 pm and dawn. It peaks around midnight on the 17<sup>th</sup>.

**21<sup>st</sup> The Alpha Monocerotid Meteor Shower** will be active from 15<sup>th</sup> November to 25<sup>th</sup> November, from 10:00 pm until dawn. Its best displays are in the hours around 4:00 am when its radiant point is highest in the sky. It peaks around 11:00 pm on the 21<sup>st</sup>.

**28<sup>th</sup> The November Orionid Meteor Shower** will be active from 13<sup>th</sup> November to 6<sup>th</sup> December, from early evening until dawn. It peaks around 2:00 am on the 28<sup>th</sup>.

**29<sup>th</sup> The Moon and Saturn** appear close together again this evening in the southern sky.

Peter

## FIVE ALIVE OIL SYNDICATE

The November deadline for ordering oil falls on Tuesday, 22<sup>nd</sup> at 6pm.

Please submit requests for either an exact amount or if requiring a 'top up' or a full tank then please furnish me with a pretty accurate estimate as to the quantity required with a minimum order of 500 litres.

Colin Stewart  
01297 792538  
cogstewartcs@gmail.com  
cogstewart@aol.com

## VILLAGE HALL '100+' CLUB

The winners of the draw held on  
30<sup>th</sup> September 2022

J Trenchard	£30	B Godfrey	£5
S Seward	£15	P Burton	£5
A Holmes	£15	K Falconer	£5

For further details, please contact  
Jean Falconer - 01297 33708

## SUDOKU CHALLENGE

Level: Hard

To solve this puzzle, each 3 x 3 square, row and column must contain all of the numbers 1 to 9. The solution is on page 25.

					8	3		2
			4	9				8
9								
	1			4		6		
		9	5		2	7		
		6		7			3	
								7
2				5	1			
8		5	7					

# THE NEW SCHOOL YEAR AT KILMINGTON SCHOOL

At the start of the school term, some walk in nervous, some stride in with confidence, but we all settle in in the same way. We were all very nervous as we walked into the classroom. After the awkward five-minute silence we were all chatting like there was no tomorrow. Stepping onto the playground was like a walk in the park.

By the end of the first week the year 6s still thought that they were the year 5s and the year 5s still thought that they were

year 4s. But now we are used to it and we don't know any different.

We may differ in personalities, but we all treat each other with respect. Everyone in this school has thoroughly enjoyed these first few weeks at school.

Head, Deputy and Pupils of Kilmingtton Primary School

## TWO NEW BABY DOLLS CALLED AMBER ROSE AND TOMMY BABY

Kilmingtton School Foundation Stage children have two new baby dolls called Amber Rose and Tommy Baby. These were names the children carefully chose.

They have been learning about christenings and they were very excited to have our babies baptised in the church. Reverend Julie took them through the whole process and the children were fascinated and took their roles very seriously.

It has really helped bring our learning in RE to life.

Mrs Emma Brogan  
Foundation Stage Teacher



## MESSY SPARKLERS

As we move further into Autumn, Messy Sparklers were thinking about Harvest. Our activities had a food, harvest theme. Our story this month was God's prophet Elijah being brought food by ravens during a drought.



Thankfully, this month we were still able to have activities outside. In one 'tough spot' (aka builder's tray) there were various cereals, eg Coco-pop paths and Weetabix bales for tractors to sort. Another tray contained various pulses to investigate with pincer tools and pots. We also had the water tray with leaves, pinecones and orange slices, which smelt delicious.

Inside, the children used peppers, carrots and potatoes to do some printing with colourful paint. On another table, they had the resources needed to make their own raven. Our final 'messy' activity, that smelt lovely, was bread dough that the children could explore.

We provide a finger food lunch for the children and their parents and carers. Some families choose not to stay for

lunch; this month we were pleased that some of them joined us for the story and song time before they had to leave.

Our next session will be **Tuesday, 1<sup>st</sup> November** at The Beacon, organised by The Baptist Church Kilmingtton. We start at 10.30 am (please don't arrive early as we will probably still be setting up) and finish at 12.30 pm. We ask for a donation of £2 for the first child plus £1 for each additional child which includes lunch for both the child and their adult. Booking is essential, if you aren't on our mailing list, please contact: [children.youth@baptistchurchkilmingtton.org](mailto:children.youth@baptistchurchkilmingtton.org) to receive a booking email. Remember to dress for mess!



If you are doing a Samaritans Purse shoebox, please remember to bring it with you on 1<sup>st</sup> November as they will be taken to the collection centre that week.

Advance notice – We have our Nativity Service on Sunday, 18<sup>th</sup> December at 10.30 am at the Beacon and all children are invited to join in with our impromptu 'Away in a Manger' choir.

Juletta Obudo



Rev Julie Lomas  
St Giles' Church  
Kilminster  
01297 35004  
07488 278 483  
revjulielomas@gmail.com



## Letter from the Churches

Pastor Mike Hudson  
KBC Church Office  
Kilminster  
07957 738 211  
pastor@baptistchurchkilminster.org

### A WARM WELCOME THIS WINTER

Sitting on the beach at Lyme Regis on Saturday, 8<sup>th</sup> October in full sunshine, with blue skies overhead, and our little ones playing on the sand, my mother and I started to talk about winters past. We reminisced about the days before central heating, when even in the balmy winters of Teignmouth there was occasionally ice on the inside of the windows, and getting dressed on a morning was best done underneath the blankets. We remembered wedging newspaper into the sash windows to stop the drafts coming through, and making 'sausage dog' draft excluders to put in front of the door, and woe betide anyone who left the door open on leaving a room! As we sat in the sunshine, our thoughts then turned to the forthcoming winter, and the anxiety that is already being felt by the reports of rising fuel costs and even planned blackouts.

Here in Kilminster we have also been talking about the winter ahead. Nearly three years ago we were about to face the Covid pandemic, and I have heard about the great response to that crisis here in our village that led to many people being supported and cared for by friends, neighbours and even folk who previously had been strangers as we were told to stay indoors and limit our contacts with the outside world.

This year, a different sort of crisis might be about to call on us all to pull together again for our neighbours and friends as

we look out for one another in a different way. We begin by talking openly and honestly about any anxiety we may feel over price rises, especially of food and fuel. The more we talk about a problem the more we can share ideas and resources, and come up with solutions that might even be fun!

At the Parish Council meeting on 10<sup>th</sup> October, we talked about the opportunity for our churches, Parish Council, village clubs and societies all working together to offer a variety of warm and welcoming community spaces. Here, anyone might come along to relax with free refreshments, keep warm, sit and read, socialise, knit and natter or play a board game as just a few examples. Perhaps you work from home and would appreciate some time in a warmer environment especially if there is wifi available. Would you find this helpful? Would you be willing to help? Do you have any other ideas?

The first step is to pull together what is already on offer and which could, with some adjustments, be extended to meet the needs of our community, so please get in touch with me, Pastor Mike Hudson or Parish Council Chair Peter Ball so we can pool ideas, and get the ball rolling.

As ever, praying for our village, and at your service

Rev Julie Lomas

### ORGAN RECITAL BY PETER SHEPHERD

A delightful Organ Recital was held by Peter Shepherd on Wednesday, September 28<sup>th</sup> at St. Giles', Kilminster. Reverend Julie welcomed Peter; she asked him questions so that we all got to know him a little better. He was not put on the spot at all – not much anyway.

A crowd of roughly thirty were there from near and far. All who attended were enthralled with the medley of music that Peter brought to us that evening. We would like to thank Peter very much for the time that he spent with us and we very much hope to see him again in the future. He was a wonderful young man and he truly was a master at work.



Could we also thank Christine Mills, Anna Cope and Lesley Rew for the hard work that they put in to make the evening special. The nibbles and drinks topped off a memorable evening. Donations were paid at the door and we were very impressed with the amount of money that was left. Thank you to all; some of the money will be well spent on the Church.

Christopher Thorne

# ADVANCE NOTICE OF OUR CHURCH CHRISTMAS SERVICES IN KILMINGTON 2022

*We look forward to welcoming you as we remember again the story of the first Christmas.*

*Pastor Mike and Rev Julie*

	The Baptist Church	St Giles' Church
Saturday, 17 <sup>th</sup> December		4.00 pm - Christingle Service for the whole family
Sunday, 18 <sup>th</sup> December	10.30 am - All Age Nativity Service	6.00 pm - Carol Service with seasonal refreshments to follow
Tuesday, 20 <sup>th</sup> December	2.30 pm and 6.30 pm - A Blue Christmas Service	
Thursday, 22 <sup>nd</sup> December	6:30 pm - Community Carol Service	
Saturday, 24 <sup>th</sup> December (Christmas Eve)		9.30 pm - Carols and Communion
Sunday, 25 <sup>th</sup> December (Christmas Day)	10.30 am - Christmas Celebration followed by Community Christmas Lunch	
Sunday, 1 <sup>st</sup> January (New Year's Day)	10.30 am - New Year's Day Service	11.00 am - Mission Community Holy Communion

## CELEBRATE TOGETHER THE STORY OF THE WIDOW AND HER COINS

Once again we gathered together for a fun filled 'Celebrate Together'. The day was Saturday, 8<sup>th</sup> September and again the weather was glorious. This time we explored the story of the Widow and her Coins, from the Bible. The service was led by Christopher Thorne, who did a wonderful job at leading the congregation. It's always fun to get together and to spend time singing and dancing to the songs that Margaret Hurford so beautifully played for us.

We had a drama based on the Widow's coins which was narrated by Christine Mills. We asked the young adults, parents and carers to count the money as it was put into the silver bowl at the front. I played the Lawyer, which was great fun; we also had John Thorne as the very rich man, Anna Crabbe as one of Jesus' friends, Christine Thorne as the merchant and last, but not least, Greta Lidster as the poor widow. We must not forget Jesus who was played by Christopher Thorne. I guess you could say he is a man with many hats. Thank you to Rosemary who made the bags/pouches that were used during the drama, they were vital/wonderful props.

After the drama, we had a wonderful talk provided by Christine Thorne, who did a great job of concluding the meaning of the Widow's coins. During the talk a bag full of



everyday items such as a wooden spoon, a tea towel, a clothing peg and a watering can was used. We asked members of the congregation to pull out an object from the bag and then we asked everyone to tell us how that item could be used. Christine (I know her as Mum) asked how each item could be used to help others; for instance, the spoon could be used to bake a cake which could then be given to someone to sustain them. Christine concluded that each one of us can use the gifts God has given us to help others. A

few more songs were sung and then I prayed for the world and for current situations; we also had a sharing time to allow others to have a chance to say prayers too.

Before we all went home, we had some yummy food which was again provided by Sheila Hill, Barbara Woodsford and Pearl Hurford. This, as always, was devoured by everyone. Thank you to all who make the 'Celebrate' Services possible. It is such a blessing for all who attend. Our next 'Celebrate Together' Service in Kilminster is on Saturday, December 10<sup>th</sup> at 3.00 pm at St. Giles' when there will be a Christmas theme. For more details please contact Christine Thorne on 07814 041059.

Elana-May Blackmore



## HARVEST FESTIVAL SERVICE AND LUNCH

We had a wonderful Harvest Festival Service and Lunch on a glorious Sunday, October 9<sup>th</sup>. The sun came out for us, the Service was great, and the lunch was very, very successful. Our thanks to the Flower Ladies of Kilminster, the displays in the Church and the sheaves on the gates were fantastic. They added greatly to the ambience within St Giles'. Reverend Julie led a lovely Service with a Tesco Shopping Trolley adding much amusement, especially when Lesley pushed it up and down the central aisle whilst the congregation added edibles to its already brimming basket. These items were all destined for the Axminster Food Bank, for those who are struggling to pay for everyday essentials. The people of Kilminster did themselves proud and showed how caring a community we are. I am confident that our generosity for this cause will continue for many years to come, while there is still a need.

A large Harvest Loaf was on display – our thanks to Paul's Bakery in Seaton for being one of the few bakeries around that bake such a loaf. Thanks to the baker, to his staff, to the person who delivered the ingredients, to the producers and all of those involved. This was the theme of our Service, where we consider all of those involved, whether they live locally or far away, and where we give thanks for them doing their part so that we have food to eat. As Reverend Julie reminded us, it is so easy just to eat and to not consider how the food has arrived on our plate and give thanks to all of those involved. This is as the Lepers gave thanks to Jesus when they were healed, with one continuing to stay close to Jesus after he was healed and therefore to continue to give thanks and not to forget.

The Harvest Loaf was taken over to the Village Hall following the Service and part of it was consumed following a main meal and pudding. The main meal consisted of cottage pie with peas and gravy. Pudding was apple crumble with custard. The bread was eaten with butter and cheese and to finish we had tea or coffee and After Eight Mints. I wonder if Reverend Julie did get to eat the mouse from the



Harvest Loaf which she had bagged during the Service? Cider and apple juice were available – thank you to Lesley and to Peter for the cider, to Jenny for the apple juice and for John who kept people's glasses filled. Several ladies in the village had made the cottage pies, other ladies made the apple crumbles. All were delicious, everyone seemed to enjoy themselves and were relieved to be able to eat together after these last turbulent years. Thank you to my wife, Christine Thorne, especially who did a lot of the co-ordinating and who worked so hard in the kitchen together with Di Seward, Sheila Hill and Pearl Hurford, to name just a few. Thank you to Jenny who helped Elana on the door. Thank you to Diana Church and to my mother Jean Thorne who looked after the raffle. Thank you to Lesley, to the two Gills, to Celia, to Caroline (I hope that we did you and Brian proud, Caroline). Thank you to all who were involved and who helped pack up in record time. I am sorry if I have not mentioned you by name, you know who you are and how you helped so a very, very big thank you. Thank you to Steve and Sam too, for the jelly and for helping to set up on the Friday night – and to you too Anna who also had a big part to play. Maybe we can plan something for Christmas – watch this space.

All in all, we made lots of money for the Farming Community Network who we have supported in the past. After we take the fee out for the Village Hall a massive £389 will be going to this charity which is from ticket sales and the proceeds of the raffle. This is almost as large as previous donations with fewer people. By my count forty-seven people were fed on the day.

Thank you again to all.

Christopher Thorne





## REMEMBRANCE – CHRISTMAS FAIR

As the weather changes - cooler, a little more rain - and the leaves begin to fall, we once again turn our minds to Remembrance. This year's Poppy Appeal commences on the 28<sup>th</sup> October and runs for two weeks. During this period, poppies will be distributed to your homes and if you wish to make a donation, envelopes can be left in a number of places including both churches, Millers Farm Shop and the mobile 'Gator' on the Saturday before Remembrance. On the 11<sup>th</sup> November we will meet on the Playing Field to mark Armistice Day and conduct a two-minute silence at 11.00 am, commencing and ending with the firing of maroons (if we can get them!). On Sunday, 13<sup>th</sup> November we will celebrate Remembrance with a service in St Giles' Church commencing at 9.45 am, before moving to the War Memorial for the final act of Remembrance at 11.00 am. After the service, tea and coffee will be available for those who wish to join us. Finally, for those who have booked, we will then retire to Haselbury Mill for our post-Remembrance meal.

The Christmas Fair this year will be held on Saturday, 3<sup>rd</sup> December in the Village Hall. Please join us for

refreshments and good old-fashioned Christmas cheer (more details in December's edition of Postscript) and look out for the posters!

Last but not least, this year has seen many changes to the way in which we live, and many are now struggling with increases to basic commodities. As we move into winter and the temperatures drop, if you are concerned about heating, unable to travel, or just unsure what to do, please remember that we are here. Your shepherds do their best to watch over you and help, but please don't be afraid, or be too proud, to ask for assistance.

We look forward to seeing you all and thank you again for supporting the Royal British Legion so well. Please take great care and stay safe.

Cdr Staff Seward OBE RN Rtd  
Chairman RBL Kilmington Branch  
07799612557 – e-mail: t60sas@hotmail.co.uk

---

## ALL CHANGE AT THE NEW INN



Sadly Steve and Harry (his faithful hound) are calling time on their tenure at the New Inn.

Despite the challenges of the last two years, Steve has always presented a friendly and cheerful welcome to all his customers. From take-aways during lockdown, garden parties in the summer, the Thai experience and Christmas parties, Steve has provided entertainment for the village,

assisted by some of his more faithful regulars.

Steve has always supported the pub sports and is a keen darts player. Although sadly his enthusiasm far outweighs his talent, he is a valued member of the team.

Villagers who regularly walk past the pub will miss Harry running up to the gate to say 'hello' in his own special way.

Steve and Harry plan to return to Rugby and join his partner, Angie.

We all wish them the very best for the future. We will miss you.

CHEERS from The Regulars.



Vicky and Spike will be taking over the New Inn from the 7<sup>th</sup> November 2022. Please do come and welcome them to our village.

---

## DON'T FORGET IF WE DO NOT USE IT, WE MAY WELL LOSE IT!

---

## CHRIS ROWLEY– OUR POSTMAN

We have been fortunate in Kilmington in having Chris as our friendly, helpful, local postman (who was presented with a 'Bringer of Joy' certificate by Exeter Diocese in 2020) and some people may be unaware that, from the end of October, he will no longer be delivering our mail, as he has decided to

leave his job at the Post Office. There is good news, however. He will not be leaving us altogether, as his new job is with Whitewater Property Services, in Kilmington.

We wish him well.

Editor



# KILMINGTON PARISH COUNCIL

## WILL YOU HELP 20s PLENTY IN KILMINGTON?

Following residents' complaints of speeding vehicles in the village and family pets being run over, discussions about reducing the 30 mph limit to 20 mph in the central residential area of Kilminster continue with Devon County Council (DCC).

However their budgets are fully committed this year, but we have a meeting set with them in early January to plan our feasibility study.

DCC have recommended we back up our appeal for the reduction by gathering some hard 'Speed Watch' data now, recording the speeds of vehicles on our 30 mph roads. If you can give a couple of hours during the day, a couple of times a month, you can help.

As a volunteer you'll work in a small team and will undergo full training from a Police Speed Watch co-ordinator. At roadside speed checks, the team will be supported by a police officer (Police Volunteer Programme support manager) and covered by the force liability insurance. Reflective jackets, signs, stationery and a speed detection device are provided.

Speed Watch is a nationwide programme involving members of local communities in a quest to drive down the speeds of vehicles in limits of 40 mph and below. It aims to engage



and educate drivers rather than issue fines and court summonses. Community volunteers and/or police officers/police community support officers stand at the side of the road monitoring traffic. Speeding vehicles are recorded and warning letters then sent to the vehicle owner together with educational information.



Alison Hernandez, Police and Crime Commissioner for Devon, Cornwall and the Isles of Scilly endorses the programme, "When they work well, community speed watch schemes enable local

people to take a stand against speeding in their communities and support the police to promote safe and responsible driving. I have been inspired by the dedication and passion of those within our communities to keep our roads safe. If the force's senior leadership is able to harness and build on this momentum, commit to driving it forward, and ensure consistency of support across the force area, then we should see community speed watch really thrive in Devon and Cornwall."

If you believe it's important to reduce the speed of drivers in Kilminster join us by mailing:

[speed@kilminstervillage.com](mailto:speed@kilminstervillage.com) or telephone Peter Ball 07747 636810 or Stafford Seward 07799 612557.

## DEFIBRILLATOR TRAINING

**FROM 10.00 AM SATURDAY, 19<sup>th</sup> NOVEMBER**

**Do you know how to save a loved one in an Emergency**

Unfortunately, many lives are lost as a result of a cardiac arrest because bystanders are often unsure about what to do in an emergency situation. If you're familiar with a defibrillator, have unpacked and held one, seen how to stick on pads, this will give you confidence and save valuable time to help save a life.

We have two defibrillators in Kilminster, one at the Village Hall and one at Millers Farm Shop. We have arranged a short, friendly training session in the Village Hall where you can get 'hands on' and gain the confidence to act quickly. Knowing the steps to take after someone has suffered a cardiac arrest could be the difference between life and death.



You do not need training to be able to save someone's life with the use of a defibrillator, as the unit will guide you through each step with visual and/or voice prompts. But spending a short time now understanding the basics could literally help make the difference between life and death. In order for the patient to have the best chance of surviving an out-of-hospital cardiac arrest, CPR and early defibrillation

must be provided within the first 3-4 minutes of the cardiac arrest, followed by advanced life support within the first eight minutes of the arrest.

**Please come along on Saturday morning to learn how you can save a life! Children welcome too.**

## A35 IMPROVEMENT PLANS

As Postscript goes to press, your Parish Council has organised a meeting in late October with National Highways, South West Operations. Their officers will present the latest plans for the development of 60kms of the A35, including the section through Kilminster.

This is the first opportunity for the Parish Council to hear the plans, understand the reasoning, the scheduled timing for the development and ask questions. We will give an update on what is presented on the village website, notice boards and in December's Postscript.



# THE SPEED LIMIT

## A Revolution in Travel

There is little doubt that we live our lives faster than ever we did before. As a species we seem to thrive on speed.

The middle of the nineteenth century witnessed the end of what is called the 'Transport Revolution'. Considerable advances in British road engineering, canal building, the development of the railway and, of course, steam powered ships and locomotives all paved the way for the expansion of an empire in grasping pursuit of huge commercial gain and global influence. It was all about speed.

Today, we take our cars for granted. Love them or hate them, there is no denying that cars still allow us simple means of self-managed transport between one part of our country and another, perhaps hundreds of miles apart, in just a few hours. All this is possible at a moment's notice and with relative economy. This was utterly unthinkable two-hundred and fifty years ago when similar journeys might have taken weeks. But, as with many transformative inventions, there were naysayers; people who thought, or hoped, that the idea of the 'horseless-carriage' would never catch on. Cars had a slow start.

Popular history suggests that the 'auto-carriage' or 'auto-mobile' was invented by Karl Benz in 1885, but its origins are of course much earlier. Steam powered 'locomotives' trundled and gasped their sluggish way along British roads long before then. Speed limits had already been imposed in 1861 to safeguard the majority of the travelling public from the dangers posed by the 'light locomotives' which were becoming more commonplace.

Soon after, the notorious 'Locomotive Act' was enacted in 1865 to introduce harsh new speed limits of just **four** miles per hour in the country and **two** miles per hour in the towns. The Act also stipulated that any self-propelled vehicle must be crewed by a team of three people, including a person designated to walk 60 yards (55 metres) ahead of the moving locomotive whilst also waving a red warning flag! Those failing to observe the speed limits were fined £10 (perhaps £1,300 today). It is said that hard lobbying by the threatened railroad and stagecoach industries led to its enactment amidst claims that 'steam was a nuisance' on the roads. In some districts steam travel on roads had even been restricted to between the hours of midnight and 6 o'clock in the morning!

Counter-lobbyists criticised the Act for its stifling effect on the development of the nascent motor industry and it would take more than a quarter of a century before the Act was finally repealed in 1896. The need for a red flag was abolished entirely and the speed limit was increased to a maximum of **fourteen** miles per hour.

On 7<sup>th</sup> November 1896 the *East and South Devon Advertiser* reminded its readers that 'motor cars' must be provided with independent brakes sufficient to stop them with a stopping distance of 50 feet and should also carry a lamp. In addition, cars were required to have the name and address of the owner clearly written upon them and drivers must stop when required to allow the calming of restive horses.

For a new world of travel powered by the internal combustion engine these were perhaps tentative steps of

acceptance, but motorists rejoiced at their new-found freedom. Famously, the now annual 'London to Brighton' car rally took place. It was then called the 'Emancipation Run' and took place on 14<sup>th</sup> November 1896 – the same date that the new act came into force.

With the popularity and availability of ever faster and better motor cars, the speed limit was soon increased. **Twenty** miles per hour became enforceable in 1903 with the enacting of the 'Motor Car Act'.

On 8<sup>th</sup> May 1908, the *Exeter and Plymouth Gazette* reported that Frederick Thomas Jane pleaded not guilty (at Axminster Petty Sessions) to driving his car at 'excessive speed' at Kilminster two weeks earlier. In his poorly constructed defence, Mr Jane claimed that police constables Willis and Smith must have been mistaken in their calculations of his speed because, after all, 'he couldn't have been driving fast because that would have been against his wife's doctor's orders'. She had also been in the car and was recovering from a bout of influenza! Unsurprisingly, the magistrate was not persuaded by his less than compelling argument and he was found guilty of driving at thirty miles per hour and fined £1 15s 6d (including costs – perhaps £250 today). Newspapers of the period are littered with similar reports.

By the late 1920's, the twenty miles per hour limit had become a mockery; continuously and extensively flouted by those who felt that speed limits impinged upon their freedom. Prosecutions faltered and backlogged, and the government felt that the speed limit had become unenforceable. The result was the enactment of the 'Road Traffic Act' of 1930 which, controversially, abolished speed limits entirely for private motor cars! No limits – less policing – fewer prosecutions. The logic seemed faultless even if the principle of governance was somewhat flawed.

Citing high road casualty rates, campaigners complained that the new Act did nothing more than enable 'mass murder' and famously the Minister of Transport, Leslie Hore-Belisha of the 'Belisha beacon' crossing fame was almost killed by a speeding car when crossing a road in London. And so, just four years later, the Road Traffic Act of 1934 re-introduced speed limits, setting them at 30mph for built-up areas; a political 'U' turn if ever there was one. Many of *Postscript's* readers will no doubt remember first-hand that the 'national speed limit' of 70mph was not introduced and enforced on



'open' roads until 1965-1967 and it would then take a further ten years for it to be reduced to 60mph on single carriageways.

The Department for Transport estimated that 24,53 people had either been killed or seriously injured on Britain's roads for the year ending June 2021. Overall, there had been 119,85 casualties. Despite those shocking statistics (which speak for themselves) and the huge increases in road vehicles in the last century, the number of road casualties has declined enormously in the same period, doubtless in no

small part due to the reintroduction of enforceable speed limits. In 1999, local authorities were given the power to introduce speed limits of 20mph without requiring higher governmental consent.

Perhaps we should confine our love of immediacy to the pursuit of high-speed internet!

Alan Clarkson

---

## VACANCY FOR A COMPILER AT POSTSCRIPT

By September we are hoping to find a replacement for our compiler, Val, who has been managing that very important side of producing our village magazine for many years and now feels that it is time to stop.

If you might be interested in helping to keep it going and working with a team of volunteers (listed on page 2) we would like to hear from you.

Please contact the editor.

---



## DO YOU GET WRAPPED UP IN CHRISTMAS?



Though it is the "season of mists and mellow fruitfulness", nevertheless thoughts may be turning to Christmas, especially when we are bombarded so early by the bigger retailers.

With 227,000 miles of wrapping paper used at Christmas in the UK, plus six million rolls of Sellotape, you'll agree that's an awful lot of waste generated. Sellotape is single-use plastic and much of the gift paper cannot be recycled kerbside because it contains plastic – well we do like a bit of a sheen on our paper!

Fabric gift bags with a drawstring make a great eco-friendly alternative for presents.

Those folks who are handy with a sewing machine could be a helpful source of supply to family, friends and neighbours! Re-use year after year and perhaps make it a family tradition. Christmassy, recyclable, brown wrapping paper is readily available too. Many people are already using plain brown or white paper, decorated by their own fair hands for a personal touch. Or, why not try your skills at using a scarf bought from a charity shop to wrap a gift? For handy hints

on the 'how to', look up 'Furoshiki' on Mistress YouTube! It is the art of Japanese gift wrapping.

There are great alternatives to Sellotape too, such as string, raffia and printed brown paper tape. Washi paper tape can be widely purchased, in narrow or wider widths (one gold, silver and white should cover all needs!).

Conventional ribbons and bows regrettably contain plastic, even those that look like foil. None of these can be recycled kerbside and therefore add to the waste mountain. Instead why not use a sprig of mistletoe, heather or holly, a fir cone, or a piece of evergreen tree?

Incidentally, any item, be it wrapping paper, cards, ribbons etc, which have a look of foil, or have any type of glitter, even if it says biodegradable, cannot be recycled and in fact can contaminate batches causing the whole lot to be binned. Glitter, which is plastic but may also contain aluminium, is especially destructive to the seas.

*Why not give the environment a great present this year and in future years? Happy zero-waste gift-giving.*

Kay Pike

\* \* \* \* \*

**Come along to Plastic Free Axminster's Christmas Eco Fair in Axminster Guildhall on Saturday, 26<sup>th</sup> November, from 10.00 a.m. to 1.30 p.m. to have a cuppa and browse the selection of hand-made and eco-friendly gifts! We would love to see you there.**



## MAD moments in the garden

Autumn colours are developing beautifully and hopefully they will still be around by the time you read this. It's my favourite time of year, autumn mists, mellow fruitfulness and all that goes with it. Apparently at every season change I claim it to be my favourite season, how lucky I am to take so much pleasure from what I see around me. By the time I write again it will nearly be winter with the wonderful shapes of tree skeletons against the horizon.

Before that, though, we have a whole load of leaf sweeping and mulching to get done. The bone-dry summer seems to have slowed down the breakdown of last year's leaves so I am choosing carefully where I mulch this year. I usually mix 50% of homemade compost with 50% of the last year's leaf mould. This year it will be more like 70/30 mix, taking those leaves that have broken down from the middle and bottom of the pile.

Some of my snowdrops and small narcissus are working their way to the surface and rather than split them now I think I will put a deep mulch on the beds where they are. That will at least hide them from the birds who have a tendency to disturb them looking for grubs. The dahlias I am leaving in the ground will get a good topping but other than that the rest can wait until the spring.

Californian poppies, cornflowers and ladybird poppies are all beginning to germinate, the sweet peas seem a bit slow, fingers crossed they will emerge. I will overwinter them all in the cold frame and plant out in March if it's not too cold and wet. That results in good strong growth and early flowers that always seem better than those sown in the Spring.

Just looking out of the window for a 'moment', (it's raining) I can see the rich dark red heart-shaped beautiful leaves of a *Cercis canadensis* 'Forest Pansy', a variety that I love. It's one of a family of around ten species of small pretty trees. I prune the Forest Pansy to fit the spot which, if I am honest is too small. I planted it eight years ago and it seems very happy there where it has full sun and well-drained soil. I remember when I first planted it, I was given a large jar of Epsom salts: one tablespoon in a watering can every couple of months while it was growing was the instruction. That would prevent 'leaf drop'. I confess the salts ran out after a couple of years and I never got around to getting more! This *Cercis* is the last of the family to lose its leaves in the garden. The *Cercis chinensis* is the first of the deciduous trees here to show its leaves in the spring. From my bedroom I can see a hint of green, purple haze as they emerge amongst all the other bare branches. The leaves are supposed to have a 'toffee apple' smell to them in summer and autumn but I can't truthfully say I have detected it. The *Cercis siliquastrum* or Judas tree is the one that has produced the mass of flowers, dark pink opening to mid pink in mid-spring. The flowers grow unusually direct from the bark up the trunk and covering the branches, fabulous! They are not very common here, but should you find yourself in the Mediterranean in May they are truly stunning.

Enjoy the sweeping of leaves and thoughts of what you might plant next year as the seed catalogues land on the door mat.

Mary-Anne Driscoll

### FREE TO A NEW HOME

**Greenhouse** 6' x 6' with Polycarbonate Glazing

**Motor Mower** 18" cut Mountfield 46PF/ES Briggs & Stratton 4 Stroke Engine

**Strimmer** MITOX 25C 2 Stroke motor Cutting Width 337 mm

Contact 07583 185232

### ECO CHURCH – BRONZE AWARD

We are very proud to announce that St. Giles' now has enough ECO Church points to enable us to apply for a Bronze Award. It has been a lot of hard work, but we are very excited to finally be in the position to be able to claim this reward and to show our ECO credentials. We will not stop here; we will aim for the Silver Award next. At the same time, we plan to help the other churches within the Five Alive Community to achieve Bronze (or better) ECO Church Awards by passing on our experiences and to help them wherever possible.

We think that the whole process is very enlightening and makes you consider ECO subjects which you may not have thought about before. We hope to have the Bronze plaque available for display in time for the 'ECO Fayre & Litter Pick' that is to be held on Saturday, October 22<sup>nd</sup>. This will therefore have happened before this magazine becomes available. We will report on the Fayre and Litter Pick in the December issue. With prayer we hope to see many people at his event.

Christopher Thorne



# KILMINGTON GARDENING CLUB

## NEW TRICKS FOR OLD GARDENERS – KATHY CROUCH

[www.kilmingtongardeningclub.co.uk](http://www.kilmingtongardeningclub.co.uk)



Kathy Crouch has been a regular visitor to the Gardening Club in the past, and with good reason. Her expertise is happily shared with her audience and she sprinkles her talks with colourful tales of her life experiences, all of which makes for an entertaining evening.

At 63, Kathy now finds that, whereas gardening used to cause sore muscles, these days she has sore joints after being in the garden or her allotment! She has various tricks to avoid too much discomfort and, like many of our recent speakers, she employs the 'no dig' technique, preferring instead to hoe (using a long-handled, triangular-blade hoe) and mulch regularly, which keeps weeds at bay and stops soil compaction on her allotment.

The New Perennial style of gardening is ideal for the low-maintenance gardener as it involves mixing grasses with herbaceous perennials in drifts, thus ensuring a naturalistic look. They stand up on their own, do not need a lot of feeding and the seed heads provide food for birds. Do gardening magazines make you feel guilty when they list jobs that need doing in the garden, month by month? In fact, Kathy believes that, if the jobs have not been done by Bonfire Night (5<sup>th</sup> November), then they can wait until Valentine's Day (14<sup>th</sup> February). Take it easy when you start gardening again after the winter – do a variety of jobs, each for a short time to ensure you don't seize up!

As an award-winning garden designer, Kathy is frequently asked to design gardens that are easy to maintain. She showed some photos of low-maintenance gardens designed in recent years by other designers – some very trendy ones with grey or anthracite-coloured gravel or chippings and

very little in the way of plants. However, they differed considerably from the photos of Kathy's own designs, which frequently include small, grassy areas and easily reached borders planted with perennials that form efficient barriers for weeds.

How else can we achieve a low-maintenance garden? Once established, a tropical garden only needs two or three days' work a year. The Desert to Jungle nursery near Taunton is the ideal place to start. A woodland garden is a perfect place for shade-loving bulbs and planting bulbs is a good way to introduce colour, especially in spring, with snowdrops followed by daffodils then bluebells. The Kilmington area is a great place for an orchard. Plant dwarfing fruit trees, mixed with fine grass and some flowers instead of an herbaceous border.

Plants that can look after themselves are a good idea, eg *Agapanthus 'navy blue'*, *Phlomis 'russeliana'* – it obliterates weeds - *Diascia 'personata'*, and *Geranium 'Rozanne'*. Are there any plants we don't really want any more? Wisteria is lovely but the maintenance is considerably longer than the joy it gives, so Kathy suggests growing it at lower level eg along a wall or a fence where it can be kept under control without the need for ladders.

Kathy demonstrated how to use the long-handled hoe in order to avoid injury (sideways with thumbs up not down) and she highly recommended using a 'Golden Gark' which is a shovel, a rake and a sieve, all in one very light tool. Although it is expensive, it is an invaluable 'new trick' to help all gardeners, not just old ones!

Jean Falconer

---

## THE KILMINGTON COMMUNITY ASSOCIATION

You may have seen mention of a Kilmington Community Association recently. This new organisation is now being formed by a group of Kilmington residents who are regularly involved in organising social events for the village. They have already organised The Kilmington Village Show.

Following two successful and profitable years they have generated not only sufficient funds to underwrite the next show, but also a small surplus. The group want this money to be reinvested in the village to support our community and other clubs or groups. So the plan is to offer other or new village groups the opportunity to apply for small grants which will benefit Kilmington residents.

In addition, the association plans to organise other social events for residents through the year (like the recent October 'Supper with Elvis'). The objective is that these events will be self-funding and if they return a profit, this will be added to the community fund. The group is now developing a constitution and a grant plan to manage the association effectively. Watch out for future details of the Kilmington Community Association and new events.

Peter

# Cookery Corner

All of this month's recipes are included for sentimental reasons. Mushroom soup was always my dad's favourite and field mushrooms have been very plentiful this year. The cake recipe was given to my mum by her good friend and someone who many in the village may still remember, Brenda Dendle. Whenever a cake was required for a cake stall for the church or the RBL, this was Brenda's go-to recipe. The salmon recipe is one of my son's favourites and he has just moved to Manchester with his new job.

## MUSHROOM SOUP

Serves 4

- 3-4 tbsp olive oil
- 1 medium onion, chopped
- 1 clove garlic, crushed or chopped
- 500g/20oz large mushrooms, chopped
- 1 litre/2 pints of chicken or vegetable stock
- 2 tbsp plain flour
- 1 tsp of chopped parsley
- 4 tbsp single cream

### Method

1. Heat the oil in frying pan and cook the onions and garlic over a low heat for about 10 minutes until soft but not coloured.
2. Add the mushrooms and cook for a further 5 minutes. Sprinkle in the flour and stir. Pour in the stock and bring to the boil, reduce the temperature and simmer for 15 minutes.
3. Liquidise the soup until smooth. Season with salt and black pepper, stir in the chopped parsley and the cream.
4. Serve with some warm granary bread.



## GLAZED SESAME SALMON

Serves 4

- 4 Salmon fillets
- 2 tbsp Sriracha chilli sauce
- 2 tbsp dark soy sauce
- 1 tbsp sesame oil
- 1 tbsp rice wine
- 1 garlic clove, crushed
- 2 tsp grated fresh ginger or 1 tsp ginger puree

### Method

1. Mix all the marinade ingredients together. Lay the salmon fillets skin side up in a dish and pour over the marinade and leave for 15-20 minutes.
2. Place the marinated salmon skin-side down on a piece of kitchen foil and wrap to form a parcel.
3. Bake at 180C fan/200C/gas 6 for 15-20 minutes until cooked all the way through.
4. Serve with egg fried rice and stir-fried vegetables.



## RAISIN MACAROON CAKE

Makes one 8-inch cake

### Ingredients

- 3 large egg whites
- 150g/6oz icing sugar
- 75g/3oz melted butter
- 100g/4oz self-raising flour
- 75g/3oz ground almonds
- 200g/8oz raisins or sultanas
- A few drops of almond essence

### Method

1. In a large bowl whisk the egg whites until stiff. Lightly whisk in the icing sugar, half at a time.

2. Gently stir in the melted butter followed by the ground almonds, flour and almond essence. Finally stir in the raisins.
3. Carefully spoon the mixture into a greased and bottom lined 8-inch sandwich tin.
4. Cook in a preheated oven 160C fan/180C/gas 4 for approx 45 minutes or until firm.
5. Leave to cool in the tin before turning out on to a wire rack. Sprinkle with sieved icing sugar. Will keep for up to 5 days in a tin if you can make it last that long!



Diane Overton

# AXMINSTER AND LYME CANCER SUPPORT

[www.axminsterandlymecancersupport.co.uk](http://www.axminsterandlymecancersupport.co.uk)

[www.facebook.com/axminsterandlymecancersupport.co.uk](https://www.facebook.com/axminsterandlymecancersupport.co.uk)

Tel: 07512 279663

Email: [info@axminsterandlymecancersupport.co.uk](mailto:info@axminsterandlymecancersupport.co.uk)

**Mailing address: Axminster and Lyme Cancer Support, Heathermoor, Yawl Hill Lane, Yawl, DT7 3RW**

**Newsletter no 49.** The ALCS newsletter appears at the very end of each month, thus missing Postscript's closing and delivery dates, but we try to include any items that are of general interest and any dates and events that are still relevant. (They mentioned at the end of September that the Tesco checkout Community Grants blue tokens could be donated to ALCS during October, but by then it was too late to tell you.)

As well as providing support and information ALCS aims to promote activities and interests which may help to alleviate the inevitable concentration on the clinical side of the experience which their clients are going through. Usually such venues have been in Lyme Regis but their information for November includes some workshops at the Stanley Studios, a new venue which has opened this year at the upper end of The Street, Kilminster, just beyond the lower entrance to Silver Street, and which some will remember as a Post Office in the past.

## Dates and events in November and December include:

Monday, 7<sup>th</sup> November: 11.30 am - 1.30 pm, Fermented Food Workshop, Lyme Regis Football Club

Wednesday, 9<sup>th</sup> November: 10.00 am – 12.00 noon, Understanding Spices, Stanley Studios, Kilminster

Friday, 11<sup>th</sup> November: 7.00 – 8.30 pm, Viewing for ALCS Art exhibition, Uplyme Village Hall

Saturday, 12<sup>th</sup> November: 9.30 am – 12.30 pm, ALCS Art Exhibition, Uplyme Village Hall

Tuesday, 15<sup>th</sup> November: 6.30 – 8.30 pm, Pie and Pint, Location TBC

Wednesday, 16<sup>th</sup> November: 10.00 am – 12.00 noon, Create a Keyring, Stanley Studios, Kilminster

Monday, 21<sup>st</sup> November: 11.30 am – 1.30 pm, ALCS Forum meeting, Lyme Regis Football Club

Monday, 21<sup>st</sup> November: 2.30 – 3.30 pm, Sleep Workshop, Lyme Regis Football Club

Monday, 28<sup>th</sup> November: 12.30 – 1.30 pm, Active Treatment Drop-in session, Scott-Rowe Room, Axminster Hospital

Monday, 5<sup>th</sup> December: 2.00 – 4.00 pm, Christmas Wreath Workshop, Lyme Regis Football Club

Tuesday, 6<sup>th</sup> December: 6.30 – 8.30 pm Pie and Pint, Location TBC

Monday, 19<sup>th</sup> December: 12.30 – 1.30 pm Christmas Lunch, Lyme Regis Football Club

If you wish to receive the full newsletter with more information and detail, or to book a place or have any queries for ALCS, please use one of the addresses above to contact them.

## SUDOKU SOLUTION

7	5	4	6	1	8	3	9	2
1	3	2	4	9	7	5	6	8
9	6	8	2	3	5	1	7	4
5	1	7	8	4	3	6	2	9
3	8	9	5	6	2	7	4	1
4	2	6	1	7	9	8	3	5
6	9	1	3	8	4	2	5	7
2	7	3	9	5	1	4	8	6
8	4	5	7	2	6	9	1	3



**Axe Valley Motors**  
**01297 34217**

We pride ourselves in customer service and offer free collection and delivery or a loan car.



### Our Services

MOT's

MOT repairs

Menu price servicing

Diagnostics with the latest tools

General repairs

Welding

Small body repairs

Contact Alistair or Jenny to book or receive a quote.





## Are you worried about your Tax Returns?

We provide a friendly, professional service for self assessment returns, business accounts and all aspects of taxation based on experience, qualifications and confidentiality.

### HOME VISITS AVAILABLE

For an initial free meeting please telephone our office and ask to speak to Hayley Perham (Taxation Director) or email: [crwaccountants@btconnect.com](mailto:crwaccountants@btconnect.com)

**Telephone 01297 553286**

The Personal, Professional approach to Taxation, providing "Peace of Mind"

CRW Accountants Ltd  
The Mews, Queen Street, Colyton, Devon  
EX24 6JU  
[www.crwaccountants.co.uk](http://www.crwaccountants.co.uk)

# eyecatching

## DRESSMAKING AND DESIGN

in Kilmington Village

Discuss your requirement with Rosemary  
Tel. 01297 639270

## Stuart's Sweeping Service

*Your local chimney sweep*



**07432 118318 or 01404  
831288**

Evening and weekend appointments available.

## Vicary & Co

Estate Agents & Valuers  
Residential - Commercial - Rural

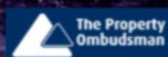
**Thinking of selling?  
Call us today to arrange a  
FREE market appraisal of  
your home.**

Vicary & Co Estate Agents & Valuers

5 South Street | Axminster | Devon | EX13 5AD

01297 33449 | [sales@vicaryandco.com](mailto:sales@vicaryandco.com) | [vicaryandco.com](http://vicaryandco.com)

Sales Manager Kelsey Lawrence  
Ian Vicary MRICS FISVA MARLA FAAV Pg Dip (Arch Cons) - Chartered Surveyor &  
RICS Reg. Valuer



## FUNERAL DIRECTORS & MONUMENTAL MASONS

# W. G. POTTER

Julian & Karen Hussey DipFD NAFD

*~ a family business ~*

### Dignified, Professional & Caring

- Offices also at Bridport, Seaton, Honiton & Ottery St. Mary
- Pre-arranged & prepaid funeral plans

*Members of The National Association  
of Funeral Directors  
Recommended by The Good Funeral Guide and  
The Natural Death Centre*

**West Street, Axminster EX13 5NX**

**01297 34283**

[www.funeraldirectors.uk.com](http://www.funeraldirectors.uk.com)



**Buse Property Maintenance**

*"quality matters"*

**Based in Kilminster** & providing all aspects of **Repair, Refurbishment & Renovation.**

Including (but not limited to!):

- ✓ General Building Repair and Maintenance
- ✓ Bathroom and Kitchen Remodelling
- ✓ Interior and Exterior Decorating
- ✓ Regular Garden Maintenance
- ✓ Landscaping and Minor Construction
- ✓ Flat-pack Construction (no more frustration!)
- ✓ A lot more - just ask!

Call **Simon** on **07939 242 101** or email  
**simon@bpmaintenance.co.uk**  
**www.bpmaintenance.co.uk**

*"A friendly and efficient service, available in  
East Devon and West Dorset"*

## §Khushi Kitchen

Fancy a **HOMEMADE** local curry?

**Then why not try a §Khushi  
authentic curry experience.**

- ❖ Kilminster's Friday curry takeaway
- ❖ Fresh Frozen Curries available **EVERYDAY**  
@ The Old Barn (honesty box system)
- ❖ Catering for all occasions, please enquire  
for a personalised menu

**Email:** [mina@khushi.kitchen](mailto:mina@khushi.kitchen)

**Web:** <http://khushi.kitchen>

**Addr:** The Old Barn, The Street, Kilminster EX13 7RJ



khushi kitchen-axminster devon & dorset

Check the website regularly for §Khushi's  
future events and pop-up kitchens.

**Mina x**



# A.G.M.

Axminster Garden Machinery

SALES • SERVICE • SPARES  
Independent Specialists



**FACTORY APPOINTED  
AUTHORISED DEALERS  
OF ALL POWER  
EQUIPMENT WE SELL**



**Proper Horticultural Engineering since 1979**

**Visit our  
well stocked  
showroom  
now**



**Always  
Great Deals  
Available**

Unit 1A Weycroft Avenue, Millwey Rise, Axminster, EX13 5HU  
Tel: 01297 631186  
[www.axminstergardenmachinery.co.uk](http://www.axminstergardenmachinery.co.uk)



[www.hunthay.co.uk](http://www.hunthay.co.uk)

**Secure Containerised Self Storage**

**Suit Business or Domestic use**

**Caravan + Motorhome Storage**

**Industrial + Starter units**

**Easy, long day & weekend access**

**Owner lives on site**

**Close to A35**

[jenny@hunthay.co.uk](mailto:jenny@hunthay.co.uk)

**Phone: 01297 33839 / 07779 550771**



## WOOF'S N WAGS PET SERVICES



**DOES YOUR DOG NEED WALKING?  
GOING AWAY OR WORKING AND NEED  
SOMEONE TO LOOK AFTER YOUR PETS?**

**WE CAN CARE FOR ALL YOUR PETS  
DOGS - CATS - RABBITS - CHICKEN &  
DUCKS - REPTILES**

- **DOG WALKING**
- **PET SITTING**
- **DAY CARE**
- **OVERNIGHT STAYS**

**PLEASE CALL MANDY 07810648433  
woofsandwags21@gmail.com**

## REFLEXOLOGY TREATMENTS — HONITON —

*Feeling tired  
& in need of  
a pick-me-up?*

**RELAXING FOOT MASSAGE  
TO RELIEVE STRESS &  
REBALANCE**



*Appointments available.*

CONTACT PAULA  
**07912 351382**

PAULA FENEGAN

★ GIFT VOUCHERS  
ON REQUEST



[www.paulafenegan.co.uk](http://www.paulafenegan.co.uk)



## NIGEL PHILLIPS GARDENING SERVICES

Does your garden need a good tidy

**READY FOR WINTER**

Phone Nigel Phillips 01297 35302

Also regular grass cutting and up-keep all  
year. Friendly local service.

## AERIALS & CABLES

**AERIAL REPAIRS & INSTALLATIONS**

Digital Upgrade

FM • Multi-Points

*Free Estimates*

0781 4481 833



## MOPSY MOPS

CLEANING & DOMESTIC SERVICES

*SMALL JOBS TO  
SPRINGCLEANS.*

MATURE FEMALE CLEANER  
CALL SADIE  
0129734367  
MOBILE 07779703388



**01297 816002**  
[lawsoncomputers.co.uk](http://lawsoncomputers.co.uk)

Inside **Waffle**  
TRINITY HOUSE  
AXMINSTER

M  
N  
R

## MNR MOWERS LTD

Unit 8 Devonshire Court  
Heathpark Industrial Estate  
Honiton, Devon EX14 1SB

First: mnr-mowersltd@bt.com

ANDY MOYLE

**SALES SERVICE SPARES**

Collection & Delivery in East Devon

For all types of Garden machinery

Tel 01404 548300 Fax 01404 548301

[MNRMOWERSLTD@UNIT8.ECLIPSE.CO.UK](mailto:MNRMOWERSLTD@UNIT8.ECLIPSE.CO.UK)



# AXMINSTER PRINTING CO LTD

TEL: 01297 32266

Not just a Printing Company... Established in 1969



## Printing & Design Services

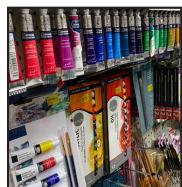
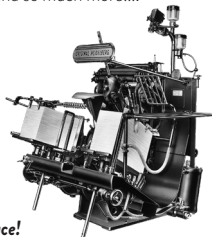
Leaflets, Posters, Booklets, Books, Labels, Tags, Menus, Banners, Magazines, Canvases, Order of Services, Headings, Business Cards, Appointment Cards, Compliment Slips, Headed Cards, Bookmarks, Invoice and Order Forms, Delivery Forms, Folders, Vouchers, Loyalty Cards, Wedding and Business Stationery, Plans, Prints (any Size up to A0) and so much more....



## Stationers

- Student Essentials
- Computer Inks & Toners
- Business Machines
- Packaging Supplies
- Filing Products
- Office Stationery

**All your stationery needs in one place!**



## Art & Craft Supplies

- Art supplies for the student or hobbyist
- Card making materials
- Lots of craft products and activity sets for children



Website: [www.axminsterprinting.co.uk](http://www.axminsterprinting.co.uk) Email: [sales@axminsterprinting.co.uk](mailto:sales@axminsterprinting.co.uk)

Address: Axminster Printing Co. Ltd. West Street, Axminster, Devon EX13 5NU

# Vintage Engineering

An engineering company with a difference. We cater for the one offs and bespoke items, in Metal (welding and fabrication) wood, and mechanical objects.

We restore Vintage/Classic cars and motor bikes, M.O.T. Welding, repair gates, stairs, individual items, make new objects in steel, stainless and aluminium and manufacture or repair wood and mechanical items.



Do you have those broken or damaged objects that you need repairing or replacing that will not cost the earth, and those home repairs or builds that no one seems interested in, we can give you a cost to do those things you just want sorting.

Call 07444 244 562

Whitchurch Canoncorum

[vintageengineering.co.uk](http://vintageengineering.co.uk)

# Chris Stubbs Electrical

Est 1981

OFFICE ADDRESS: UNIT 2,  
THE ASSEMBLY ROOMS,  
GUNDRY LANE, BRIDPORT,  
DORSET, DT6 3RL

Bridport Office No. 01308 422726

Kilminster Home No. 01297 631244

Mobile No. 07836 247294

email: [StubbsChris@hotmail.com](mailto:StubbsChris@hotmail.com)

**"For a friendly service  
at a competitive price call us today"**



## GREEN MACHINES

Mobile Garden Machinery Repair

FORMERLY DAVID GEAR HORTICULTURAL

**Oliver Newton**

Service & Repair of all  
Garden Machinery

**Call Oliver Today!**

01297 23913

### WEEK TO VIEW (Events that happen the same time every week)

Sunday	10.30 am	The Beacon	Service
Monday	early	Your house	Recycling collections
	2.00 - 4.00 pm	Village Hall	Country Dancing
Tuesday	10.00 - noon	The Beacon	The Post Office
Wednesday	9.30 am	The Beacon	Toddlers and Tinies (Term time only)
	10.00 - noon	St Giles' Church	Mums and Babies Support Group
	2.00 - 4.00 pm	Village Hall	Short Mat Bowls
Thursday	7.00 pm	The Beacon	Alpha Course
Friday	10.00 - noon	St Giles' Church	Coffee and a warm welcome

### DATES FOR NOVEMBER 2022

Tues	1st	10.30 am	The Beacon	Messy Sparklers
	1st	7.00 pm	St Giles' Church	All Soul's Day Mission Community Service
Sun	6th	11.00 am	Stockland Church	Mission Community Communion Service with Confirmation
Tues	8th	Early	Your House	Garden Waste Collection
	8th	9.30 am	St Giles' Church	Said Communion
Wed	9th	7.15 pm	Village Hall	KCC: <i>Operation Mincemeat</i>
Thurs	10th	2.00 pm	Village Hall	KCC: <i>Operation Mincemeat</i>
Fri	11th	11.00 am	Playing Field	Firing of Maroons for Remembrance Day
	11th	6.30 pm	Village Hall	Kilmington Gardening Club AGM and Social
Sun	13th	9.30 am	St Giles' Church	Joint Service for Remembrance Sunday
	13th	11.00 am	War Memorial	Laying of Wreathes
Mon	14th	7.30 pm	Village Hall	Parish Council Meeting
Tues	15th	12.30 pm	The Beacon	Community Contact Lunch
Sat	19th	8.00 am	The Beacon	Men's Breakfast
	19th	10.00 am	Village Hall	Defibrillator Training
Sun	20th	9.30 am	St Giles' Church	Holy Communion
Mon	21st	Early	Your House	Landfill with recycling
Tues	22nd	Early	Your House	Garden Waste Collection
	22nd	9.30 am	St Giles' Church	Said Communion
Sat	26th	8.30 am	The Beacon	Women's Breakfast
Sun	27th	9.30 am	St Giles' Church	Service of the Word

### DONATIONS, PAYMENT FOR ADVERTISING SPACE AND ARTICLES/NOTICES FOR POSTSCRIPT (i.e. THOSE NOT SENT BY EMAIL)

**It has been necessary to set up alternative arrangements following the closure of the village shop.**

**DIRECTIONS FOR FINDING** Vicky Larcombe's house. Vicky is treasurer for Postscript.

From Whitford Road turn left and walk up The Street, passing Koppers, Kushi Kitchen, the Bull Pen and West Gate on your right. The next house is **Brookside** where Mrs Vicky Larcombe lives. If you find yourself crossing Meadow Bank, you have gone a few steps too far.

Please post payments for advertising in Postscript and donations to help with printing costs  
through the front door of Vicky Larcombe's house. Thank you.

## USEFUL TELEPHONE NUMBERS

### VILLAGE NUMBERS

Bell-ringing - Celia Dunsford	01297 33563	KGC - Bev Perkins, Secretary	01297 631801	RBL - Jean Falconer - Sec Stafford Seward - Chairman	01297 33708 01297 33909
Bridge Club - Eric Samways - Gill Bullock	01297 24260 01297 647768	Kilminster Community Cinema - John Watts	01297 639758	Short Mat Bowls - Edith Turner	01297 34090
Country Dancing - Gill Perkins - Marie Thorne	01297 32888 01297 631194	Kilminster's Little Helpers - Sally Huscroft	01297 32243	Table Tennis - Jenny Nickolls	01297 639758
Cricket - David Lavender	01297 631868	Kilminster Pre-School - Now part of primary school	01297 32762	Telephone Box Library - Karen Hodder	01297 35162
Footpath co-ordinator - Elaine Penzer	01297 34287	Kilminster Primary School	01297 32762	Tennis - Bev Bailey Sue Wells	07577 488656 07912 272102
Hitchcock Pavilion bookings - Peter Huscroft	01297 32243	Millers Farm Shop	01297 35290	Village Hall bookings - Louise Quincey	01297 32358
Kilminster A35 Pit Stop	01297 598060	The New Inn	01297 33376	Village Hall 100+ Club - Jean Falconer	01297 33708
Kilminster Cross Services	01297 631089	The Old Inn	01297 441855	www.kilminstervillage.com - Luke & Maxine Lawson	07719 909532

### MEDICAL AND SUPPORT

Axminster Hospital	01297 630400	'Devon Doctors on call' (Out of hours GP service)	0845 6710270	Veterinary Surgery	01297 630500
St Thomas Court Surgery	01297 32126	Dentist Helpline	03330 063300		

### SERVICES AND FACILITIES

Refuse Collection	01395 571515	Axminster Library	01297 32693	Clerk to the Parish Council	07800 826657
Water - general - leaks	0344 346 2020 0800 230 0561	Mobile Library	01404 42818	E. Devon District Councillor - Iain Chubb	01297 35468
Electricity - emergency	0800 365 900	Ring & Ride	01404 46520	Devon County Council, Whimble and Blackdown, Iain Chubb	07932 459595
		Axminster Care Service	01297 35550		

**Police:** Crime stoppers - 0800 555111; Emergency - 999; General - 101

### CHURCHES

<b>St Giles' Church</b> Rev Julie Lomas	01297 35004	<b>Baptist Church Office</b> Pastor Mike Hudson	01297 631638	<b>Axminster Catholic Church</b> Parish Priest: Father Anthony Cockram	01297 32135
--	-------------	--	--------------	--	-------------

### ADVERTISING IN POSTSCRIPT

Postscript is published ten times each year and is delivered free of charge to every house in Kilminster. All advertising fees and donations to Postscript are used to meet the cost of printing. ALL advertisements which are set out, from any source, are chargeable as follows and must be paid for in advance.

	<b>Black and white ads</b>	<b>Colour ads</b>
Credit card (70 mm x 40 mm)	£ 5 or £22.50 for 5 months	
¼ page (90 wide x 136 mm high - Portrait)	£12 for one-off or £50 for 5 months	£15 for one-off or £75 for 5 months
½ page (184 x 136 or 90 x 276 mm)	£20 or £90 for 5 months	£30 for one-off
Full page (184 x 276 mm)	£30 or £130 for 5 months	£40 for one-off

If the advertisement could be sent as a jpeg it is a great help when sizing for publication.

**BACK COVER:** *Occasionally the back cover is available for a one-off colour page advertisement. Cost: £50*

*Additional fee of £1 if Postscript has to edit, size or set copy.*

**PAYMENT:** Cheques should be made payable to: Kilminster Postscript and posted to: **Mrs V. Larcombe, Brookside, The Street, Kilminster, EX13 7RJ.** BACS account name is Kilminster Postscript, sort code: 51.61.23, account no: 18159400

**COMING AND GOING FOR A SONG:** There is no charge for these entries for items valued up to £20 or less. However, donations are appreciated - these can be popped through Vicky Larcombe's door (please see directions on page 22).



# AUTUMNAL SUNSETS



*Celia Dunsford*