

KILMINGTON POSTscript

Issue 258 October 2023

80p where sold



Editorial

Since the Legacy to Landscape project first told us about it, only a few years ago, the rare Kilmington lily, aka Heath Lobelia, has risen from obscurity to star status. Although local people knew it was there and called it the 'Flower of the Axe', it was officially 'discovered' in the 1770s and publicised by a herbalist expert. There are references to it in local history books and the Kew Gardens archive collection has specimens of it, but by 2016 it seemed to have almost disappeared. Its preferred habitat, poor, acid heathland, was until recently regarded as worthless, but has become more highly ranked by conservationists who are now coordinating their efforts at several levels to restore the Common as a valued part of this AONB and bring the lily back from the edge of extinction. In this month's Postscript we have articles from the Parish Council about their Common Management Plan and an update on the work being carried out by the volunteers.

The beginning of Autumn has seen some of the hot Summer weather that was lacking earlier. The FROGS were able to continue their work in the churchyard, cutting back the extra growth that had come with the rain. The Village Show was a great success, and there are pictures, a report and a prizewinners' list. The Church Gift Day offered a history tour and a closer look at the bells, and even the view from the top of the tower for the most intrepid. You have sent interesting articles. Kieran Verberth tells us of Olivia Miller's 60mile run in aid of MND research, Mike Hudson writes about Loughwood Chapel, and the flourishing History group reminds us of the archives that they have been creating with the help of all those who have kindly lent their deeds for scanning.

Looking ahead into October, there are notices about the Harvest Festival lunch and more talks for the History Group and the Gardening Club, as well as the Kilmington Players' AGM, which, as many people will be delighted to see, will be combined with a Panto Interest Evening! The Community Cinema announces its next film, the Short Mat Bowls group hopes to recruit more members and Peter and Jane prepare their garden for the next harvest. The RBL will commence its Poppy Appeal on 26th October, ready for the Remembrance Day ceremonies in November, and announces new arrangements for the Post-Remembrance Service meal this year.

The harvest is apparent in the lanes where we find honey and jam for sale and generous gardeners and allotmenters leave boxes with windfall apples, green beans, courgettes and marrows of all sizes for passers-by to help themselves.

Janfryd

About Postscript

Please email all contributions and adverts for Postscript to:

postscript@kilmingtonvillage.com

Alternatively, please give your item to any team member.

The closing date for submitting articles for the November issue is 15th October 2023 (12th for adverts).

Earlier submission is always encouraged to ease the burden on the volunteers!

All submissions will be acknowledged. Please email, or ring 01297 639115 if not acknowledged within 48 hours.

Postscript Team

Editor

Janfryd Gordon-Kerr
01297 639115

Compiler

Rob Swain
07771 984842

Please contact us via *postscript@kilmingtonvillage.com*

Team

Peter Ball 01297 32631

Marie Gardner

Gill Highway 01297 33951

Jill Collier 01297 32390

Gill Perkins 01297 32888

Please contact us via *postscript@kilmingtonvillage.com*

Distribution

Diane Overton
01297 33569

Treasurer

Vicky Larcombe
01297 33858

Please contact us via *postscript@kilmingtonvillage.com*

Postal address

The Granary, George Lane, Kilmington, EX13 7RT

Postscript is published 10 times each year and is delivered free of charge to every house in Kilmington. Almost all items in the magazine come from the village community who are very supportive of the magazine. The Postscript team are all volunteers and your donations, together with fees from advertisers, are used to pay for the cost of printing.

Postscript is printed by Axminster Printing 01297 32266

Advertising Payments & Donations

Please see p27 for details for arrangements for donating to Postscript and paying for advertising.

For **advertising rates**, please see p27.

Donations for the month, total £16.00.

All donations go towards printing costs.

Thank you for your continuing support.

Front page photo: © Marie Gardner

Centre spread photos: © Marie Gardner

The average production cost per 28-page copy of Postscript with several colour pages is 80p. Extra copies are usually available from Millers Farm Shop.

Disclaimers: Items in this publication are the work of individuals and do not necessarily reflect the thoughts or opinions of the editorial team. The editorial team reserves the right to make small alterations to items submitted. Contributors are responsible for ensuring that parental permission has been obtained before pictures of children are submitted for publication, and that articles do not contain defamatory, libellous, or copyright/plagiarised material (text and/or images). The content of advertisements is not the responsibility of the editorial team. All queries should be addressed to the advertiser. This publication is online at www.kilmingtonvillage.com, where there is also an archive of earlier issues.



Kilmingtong Village Show

We hoped for sun and that's exactly what we got; it really was a beautiful sunny day for this year's village show. People of all ages came to support the annual event despite it being the hottest day of the year.

Everyone was welcomed onto the showground by our local shanty singers the Jurassix, who sang and entertained throughout the afternoon.

There was lots of entertainment for all the family around the showground. One of the biggest draws was Garwynn's reptiles and bugs, where a crowd gathered to hold a tarantula, a millipede, or one of the many snakes. The most popular was Loki, the giant three stone albino python.

Professor Bumble kept the kids entertained with his silly circus antics, and fun magic tricks. And this year's village 3 race Grand National saw six crocodiles being dragged to victory with lots of encouragement and participation from the crowds!

There was a variety of stalls selling a good selection of items and lots of fun games for little kids and big kids alike.

For the petrol heads of the family, there was a good display of classic cars, and for the dog lovers a few of Cotley Hunt's hounds were on show.

The dog show was well attended, despite the very hot weather, resulting in Rafa the Rottweiler winning Best in Show. In between classes, many of the dogs appreciated cooling off in the paddling pools.

Everyone was well fed and watered with Kilmingtong's branch of the RBL running the BBQ, the Baptist Church ladies serving delicious afternoon teas, and with ice creams and a beer tent, everyone was catered for.

We would like to say a big thank you to everyone who volunteered to help as we could not run the show without you. And to all who donated items for the tombola, wine for the raffle and water to wine, and cakes to boost the funds. All the profit from the show goes into The Kilmingtong Community Association, which supports local village organisations and events that benefit our residents.

Kilmingtong Community Association



Kilmingtong Parish Council

Devon County Council Highways (DCCH)

DCCH have agreed the extent of the 20mph area and the position of signage. They are now calculating the costs for the legal work and erection of signage.

Roman Road: It has taken a while, but Highways have now filled the potholes and some resurfacing has much improved the tarmac section of Roman Road. Unfortunately the remainder of the byway has not been improved, as this is not the responsibility of Highways Department.

National Highways A35

We await further news.

Community Speed Watch

We await the delivery of equipment and the on-site training.

New Inn Defibrillator

Details of the purchase, insurance and maintenance have been agreed and we are now awaiting the final hosting agreement from Palmers.

Peter Ball

Next Meeting 9th October 19:00 in the Pavilion

Village Hall '100+' Club

The winners of the draw held on 31st August 2023 are:

209	Mr. I. Tregaskis	£30
203	Mr. T. Cook	£15
1	Mr. M. Collier	£15
57	Mrs. A. Marsh	£5
108	Mrs. S. Frankish	£5
199	Mr. S. Phillips	£5

For further details, please contact Jean Falconer – 01297 33708

@yecatching

DRESSMAKING AND DESIGN

in Kilmingtong Village

Discuss your requirement with Rosemary
Tel. 01297 639270



What's On in October



Kilmington Community Cinema

The Phantom of the Open

12

Wednesday 11th October
Thursday 12th Matinee
Kilmington Village Hall



Kilmington Community Cinema

KCC is licensed for the screening of cinematic productions to an audience.



The Phantom of the Open tells the remarkable true story of Maurice Flitcroft, a crane operator and optimistic dreamer who, with the support of his family and friends, managed to gain entry to the 1976 British Open qualifying, despite never playing a round of golf before. With pluckiness and unwavering self-belief, Maurice pulls off a series of stunning, hilarious, and heart-warming attempts to compete at the highest level of professional golf, drawing the ire of golf elite but becoming a British folk hero.

Come along and enjoy a film and have wine/soft drinks, ice-creams/tea/coffee. Cream Teas available during the matinee interval.

Wednesday, Doors open 6:45pm, and the evening's entertainment starts at 7:15pm and ends about 9:30pm.
Thursday matinee, Doors open 1:45pm, Film starts 2pm.

Upcoming films:

November



December



Short Mat Bowls



Short Mat Bowls starts again on Wednesday 4th October, 2 - 4 pm in the Village Hall. New members welcome.

For more information please contact Edith Turner 01297 34090.

Five Alive Oil Syndicate



The October order deadline falls at 6pm on Tuesday 24th October

Please submit a request for either an exact amount or if requesting a "top up", a full tank, then please furnish me with an accurate estimate (100 litres) of the quantity you require. A minimum request of 500 litres applies.

Colin Stewart
01297 792538
cogstewartcs@gmail.com
cogstewart@aol.com

KGC – Next Talk



This month's talk is on Friday 13th October at 7:30pm entitled *Creative Gardening with Bulbs* by Lady Christine Skelmersdale – an author, lecturer, and director of a nursery which specialises in bulbs. Christine will explain the best use of bulbs in the garden, with the emphasis on colour, shape, texture etc.

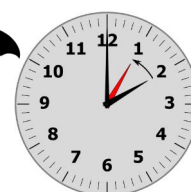
All welcome at the Village Hall, non-members £3, Bar and refreshments.

Kilmington Gardening Club

Clocks Go Back 1 Hour



Don't forget, the clocks go back 1 hour at 2 am on Sunday 29th October.



Mobile Library



Tuesday, 17th October 2023 at 11:15-11:45 am The Street



What's On in October



Kilminster Sky at Night

We have two meteor showers this month and throughout October you can see Jupiter, Saturn and Venus.

- **Jupiter** rises in the east in the early evening, setting in the west northwest as dawn breaks.
- **Saturn** can be seen in the southeast sky in early evening, setting in the early morning hours in the west-southwest.
- **Venus** can be seen easily, rising in the eastern morning sky.
- All month **Mars** is below the horizon through the night, so can't be seen.

October

- 1st **Sunrise 07:13 — Sunset 18:52**
- 1st **Jupiter and the Moon** appear close together
- 8th–9th **Draconid meteor shower.** Watch for this short-lived shower at nightfall and early evening on October 8th. Look towards the north-west and overhead near to the plough through the night, with the expected peak in the early morning of October 9th
- 20th–22nd **Orionids meteor shower** peaks around October 20th/21st, with 10 to 20 meteors visible every hour towards the south-east and above. These fast-moving meteors occasionally leave persistent trains and sometimes produce bright fireballs

- 24th **Saturn and the Moon** appear close together
- 28th **Full 'Hunters' Moon and a Partial Lunar Eclipse** around 20:30 to 22:00. A partial lunar eclipse occurs when the Moon passes through the Earth's partial shadow, or penumbra, and only a portion of it passes through the darkest shadow, or umbra. During this type of eclipse a part of the Moon will darken as it moves through the Earth's shadow
- 31st **Sunrise 07:03 — Sunset 16:51**

Peter Ball

Historic Picture Tour of Kilminster



Following the two sell-out picture shows earlier in the year, we are again being asked to repeat The Historic Picture Tour of Kilminster, as some couldn't make the previous shows. So, if you wish to learn more about the history and development of Kilminster, come along to a *Historic Picture Tour of Kilminster* on Wednesday 25th October at 7:00pm in the village hall. The Kilminster History Group has collated some historic photographs and added some

commentary to give you a historic tour through the village. If you're new to Kilminster then you're sure to learn some interesting background about your new surroundings. For those who have lived here a while, we'll bring back memories and we hope you'll chip in and pass on some of your knowledge. We'll have teas, coffee and a bar. Entrance is just £3 with funds going to set up and manage our new archive.

Kilminster History Group

Harvest Festival Lunch

You may have seen posters about the village announcing that we will be holding a Harvest Festival Lunch at Kilminster Village Hall on Sunday, 8th October. The lunch will follow the 11:00am church service at St Giles'. The harvest loaf is on order and it will be on display during the service. Afterwards it will be taken to the Village Hall. The charge per lunch is £8.00 with children under 12 eating free. All proceeds will be going to 'The Farming Community Network'. It would be nice if everyone could be at the Village Hall for 12:30pm as we intend to start serving cottage pie at 12:45pm. Apple crumble will follow. The harvest loaf will then be eaten with cheese. Cider and soft drinks will be available.

If you have managed to produce pumpkins from the pumpkin seeds that were given out during the Rogation Service earlier in the year, then this will be the time to bring them along.

If you would like to come please let Christine Thorne know either by calling her (or texting her) on mobile number 07814 041059, or, by e-mailing her – christinethorne1958@gmail.com

A good idea of numbers will help with catering, if you could let Christine know you will be coming please by Thursday, 4th October.

We would love to see you. Companionship while eating lovely grub with thanks to the Lord for providing the fruits of the land. A merry time is sure to be had by all.

Christopher Thorne

ST Giles' Church...

Harvest festival lunch

KILMINSTER VILLAGE HALL

Sunday 8th October 2023

12.30 PM FOR 12:45PM

£8 per person
Children under 12 **FREE**

RSVP by Thursday 4th October

Cottage Pie and Apple Crumble ready to be eaten!

for more information contact:

Christine Thorne: On 07814041059
or email: christinethorne1958@gmail.com

All proceeds go to
FCN THE FARMING COMMUNITY NETWORK
Here for you

Kilmington History Group

An Eventful Day in Kilmington

1st October 1913 – Ceremonies and Politics

On Friday 3rd October 1913, The Devon and Exeter Gazette printed a column titled 'Kilmington Day – England's Heritage', reporting upon village events which had taken place just two days earlier. Many other newspapers covered those same events, each taking a slightly different perspective but between them telling of an interesting day with deeper historical context.

Readers of Postscript might recall from the May 2022 edition, a recount of the rousing speech which had been delivered by Sir John Kennaway at the Old Inn in 1882 when he was member of parliament for East Devon. Kennaway was a charismatic and larger-than-life personality known for his persuasive oratory and opinion. Now an old man, he was called upon as guest of honour – his name certain to attract the attendance of the public and press alike. The ceremonies were overseen by Kilmington's vicar, but many other important people also attended.

A New Vicarage

The first order of the day was the laying of a dedication stone at Kilmington's new vicarage on Whitford Road. The house was implausibly described in newspapers as a 'convenient building' erected at the 'lowest cost allowed' by the Church. Cynics of today might suggest that the clergy downplayed the costs, after all the same newspapers had previously recorded the numerous 'sales of work' and 'bazaars' which had been organised by parishioners to help raise funds for the building. Today, this former rectory is known as 'Fairfax', a spacious family home recently described much more generously by estate agents!



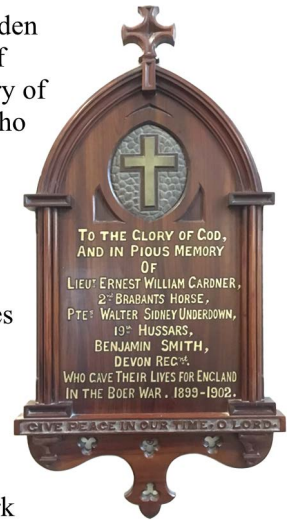
The new vicarage was built in recognition that Kilmington (along with Membury) had recently been given ecclesiastical independence and was no longer a subsidiary to the parish of Axminster. Although Kilmington had been a separate parish at the time of the Norman Conquest, it had at some point been subsumed into Axminster. In 1911, the Bishop of Exeter announced that he would appoint the young but capable Reverend Edward Keightley Botwood as Kilmington's first vicar. Botwood was inducted the following January and his tenure was seen as a new beginning for Kilmington's Church,

which would then be 'on its own' and 'enjoy peace and prosperity'. Afterwards, the joyful gathering sang their merry way to St Giles' for the following, perhaps politically motivated, ceremony.

Sluggish Blood in Kilmington?

Many readers will know of the wooden plaque memorial fixed to the wall of St Giles' church, installed in memory of three of Kilmington's young men who lost their lives in the Second Boer War which ended in 1902.

The memorial was unveiled eleven years later by Sir John Kennaway who, with Reverend Botwood, delivered some hard-hitting speeches with a deep political agenda.



Britain had by then known more than a decade of peace and it was seen by many as a time of hope and innocence. However, there were dark concerns at the heart of government. The words delivered that day to the newspapers and local parishioners reinforced a strong desire that Britain should increase its readiness for war and to keep itself as head of an empire.

Kilmington's young men were accused, very publicly, of being 'somewhat decadent and lacking in appreciation of the duty that they owe their country'. Why was it that Kilmington's men failed to sign up to the Territorial Forces? Botwood stated that 'one wonders if patriotism as far as Kilmington is concerned is dead'. Mothers and wives were implored to 'encourage their husbands and sons to do their duty' and God was called upon to grant that 'Kilmington men, as the inhabitants of a restored, reinvigorated and freed parish, might take their part in the defence of this country'.

The events were endorsed by the newspapers which expressed further hope that the scene in the church would be enough to 'stir the sluggish blood of the Kilmington men' before wishing that 'may the men of Kilmington speedily realise their obligations and show the public that the blood of their fathers runs warmly through their veins'. It was reported that the only member of the Territorial Forces (a volunteer component of the British Army) in Kilmington was the new vicar. Shameful!

National politics was at play. Earlier that year, parliament had debated at length the difficulty of recruiting young men into the ranks of the recently formed Territorial Forces, whose numbers were already declining. Britain was mindful of ongoing conflicts in Europe, famously known as the 'Balkan powder keg', and the significant build-up of Germany's forces. It was fearful of being drawn into conflict and of an invasion; it felt underprepared.

Recruitment was therefore no longer about appealing to Kilmingdon's young men based solely on patriotic zeal or the excitement of adventure. They were instead being chastened into volunteering – we all know that peer pressure is a powerful tool, perhaps especially so for young men. Cynics might even suggest that the ceremony of unveiling Kilmingdon's memorial in 1913, to a war which had ended more than eleven years earlier, was contrived as a small part of the nation's desperate recruitment drive.

1913 would be the last year of the 'old world' of Britain's Empire. The Great War would suddenly begin the following summer and the world would never be the same again. Eleven of Kilmingdon's men would perish (presumably without sluggish blood), laying down their lives for 'King and Country' and be immortalised on Kilmingdon's next war memorial at George Cross, unveiled in 1922. No doubt those mothers and wives of Kilmingdon reflected hard upon Kennaway's and Botwood's entreaties of less than nine years earlier. As for the Reverend Botwood, he also served and is equally remembered on the memorial. He died of a lung condition contracted on the western front in 1916.

The 1913 service ended with the hymn 'Fight the Good Fight' before clergy and congregation turned their attention to the less politically charged matter of celebrating Kilmingdon's Harvest Festival.

An interesting footnote to this story is that less than two years later, Kilmingdon was reported by newspapers as 'one of the most patriotic villages in the county' with almost ten percent of its population in active service. Presumably in no small measure because of the efforts of Botwood and Kennaway.

For those readers who may not be aware, Kilmingdon's Boer War Memorial was reported to have been carved from the wood of Kilmingdon's then famous and venerable yew tree. Tradition says that it was planted in 937AD at the burial site of the slain men of the terrible battle of Brunanburh, fought between the Saxons and the Vikings. Historians of today dispute the location of the battle, almost universally preferring northern sites, but evidence of the old yew tree exists in St Giles' Churchyard in the form of a stone tablet marking the spot where it once stood.

Alan Clarkson

The Kilmingdon History Group – Our Activities

The Kilmingdon History Group continues to gather village documents, scan, and return them. Great progress has been made to date and thanks to all those who have already provided house deeds, photographs, old documents, and information about Kilmingdon. We now have over 700 digital records which will ensure Kilmingdon's past will not be lost. We hope to make some of this material available soon on a village archive website.

The research continues, and we are learning some fascinating stories of the lives of people who lived here and how the village developed. Following the success of the Spring picture shows, we plan to share these stories in some more Kilmingdon History Events during the coming winter months. We'll start this month showing the Historic Picture Tour of Kilmingdon again, as we've had requests for a repeat from those who missed it.

In November, our second presentation, 'A Poor Life in Kilmingdon' will provide a real insight into the poverty and tragedy of the lives of those who barely managed to exist in the village.

In addition, Alan Clarkson continues to provide interesting historical articles for Postscript and, if you missed past stories, they can be found in the Postscript Archive within the village website.

Please remember, if you have any old documents such as deeds, old newspaper reports or photographs, we would love to borrow them to scan and add to the archive. We will take great care of them and quickly return the originals to you.

You can contact the group via KHG@kilmingdonvillage.com

Run 60 Miles in August - Olivia Miller

In August, Olivia Miller of Millers Farm Shop took on the challenge of running 60 miles to raise money to fund vital research, care, and support for people living with MND and their families. MND is a rare condition that progressively damages parts of the nervous system. This leads to muscle weakness, often with visible wasting.

Olivia was inspired to raise funds for the charity after watching the moving documentary about how former English rugby league player Rob Burrows had been affected by the disease. She commented: "After watching the documentary on Rob Burrows, earlier in the year, I felt



compelled to do something to support the Motor Neurone Disease Association. I racked my brain for a couple of months thinking of something to do. This run came up on Facebook – Run 60 Miles in August. I thought to myself 'I can do this, surely?'.

Olivia took on the challenge in August and smashed it, by raising over £800 for the cause. All of us at Millers Farm Shop would like to give Olivia a huge round of applause.

Kieran Veberth

Peter and Jane in the Garden



The 21st of this month is Apple Day and peak apple harvest time. I am lucky enough to have an orchard of 18 fruit trees, mostly South West heritage varieties such as 'Woolbrook Pippin' (Sidmouth), 'Oaken Pin' and 'Lucombe's Pine' (Exeter), 'Cornish Gilliflower' (Truro), to name a few.

The domestic apple originated from Kazakhstan but it is thought that the Romans brought the fruit to Europe. Not until the late 1870s did apples become a highly prized fruit in England. In 1895, the RHS (Royal Horticultural Society) held its first exhibition of home grown fruits at Crystal Palace, and in 1922, commercial fruit trials began at Wisley RHS gardens.

Today, demand and supermarkets have limited the number of varieties grown for storage ability, sadly at the cost of flavour. I am spoilt with mine, which taste wonderful and some store through to the end of Spring.

It is this month that I clear the last of the tomatoes from the greenhouse and ripen them inside. I can then store my tender plants in there for the winter, with space and ventilation and little water, to keep them from disease.

Hardwood cuttings of things like gooseberries and currants can be taken now, if you need more plants or want to replace old ones, rather than buying new ones. 15–20cm cuttings can be stuck directly into the ground and left to root the following year.

Despite the seemingly wet summer we have had some dry warm weather in between which has made for a pretty good growing season. That, of course, means the weeds as well. Unfortunately, due to a slight shoulder injury, I have not really been able to keep on top of the hoeing. Nevertheless the peas and beans just kept going and the sweetcorn was the best I have ever grown.

Now my thoughts turn to what I am going to plant in the autumn. I think I will sow a short row of broad beans for an early crop in the spring. Also I will put in a row of garlic. This year my garlic had a mega attack of brown rust and I had to harvest them early. I have been spraying my leeks (they also suffer badly from rust) regularly with Neem oil (which I mentioned in an earlier edition) and the oil has definitely held back the rust, so, fingers crossed, I will do the same with this year's garlic.

I also intend to create an asparagus bed, although I'm having a bit of difficulty obtaining the crowns. I want to plant them in the autumn rather than the spring to get them established while the soil is warm. This will mean digging a trench and nicking some of Jane's compost to fill it, to plant the crowns on top and cover with soil. Asparagus plants are either male or female. The male plant produces more and better spears (sorry girls), so the best buys are male F1 hybrids.

Happy days.

Jane Chalk and Peter Guy

Kilmington Gardening Club Competition

The Kilmington Gardening Club were happy to be at the village show this year with their Art, Photography, Baking, Preserves, Craft, and Junior competitions. There were a lot of entries across all categories, but the largest class was the Photographic section with sixty entries. The standard was very high across all classes.

There was a constant stream of people in the hall throughout the afternoon admiring the entries on display.

After months of nurturing and watering, the grand unveiling of potatoes in a bag competition saw Jane Bond winning the adult section and William Massam winning the junior section.

The cups awarded were:

- Association's Silver Cup (preserves) Julie Wagner
- Mary Hibberd Cup (cookery) Kate Brown and Debbie Fudger
- Carey Potter Cup (handicraft) Keith Brown
- Thora Johns Cup (needlework) Louise Wood
- Kilmington Cup for Art Stephanie Hathaway
- Kilmington Cup for Photography John Mellows
- Pavilion Cup (year group 2 and below) Ethan Hill
- Colyer Shield (year groups 3-6 inclusive) Ben Fudger
- Miller Cup (year groups 6-8 inclusive) Evelyn Hill
- Junior Photography Evelyn Hill
- Barrel Cup (youthful endeavour) Tristan Hill

Congratulations to everyone who entered and well done to all the cup winners.

KGC





Kilminster Cricket Club



Kilminster Cricket Club's season ended on the field with matches against Plymouth 1st XI and North Devon 3rd XI, but that might or might not be the end of the story.

First of all, the things we know definitely. Ashley Cook's 2nd XI gathered enough points to finish in 8th place in the Devon Cricket League F Division East. This means they will be playing at the same level next year. A bit of a hard graft type of season and hopefully the team can build on this next season, particularly as some young players develop their game.

Kilminster 1st XI won their final game of the season against Plymouth 1st XI in front of a very large crowd of the club's loyal supporters, meaning they finished 2nd in the Devon Cricket League A Division. A truly amazing achievement by Matt Rockett's team against much bigger clubs, towns and cities. Whilst there have been many really good players who have played for Kilminster, I have no doubt that this is the best team to ever represent the club and village. They have been superb.



Back row: Richard Reed (chairman), Ollie Reed, Tom Gooding, Rob Crabb, Josh Cann, Brett Garner, Matt Pile, Matt Reed
Front row: Sam Cuconits, Ian Gooding, Mike Collier (president), Matt Rockett (captain), Joel Seward

2nd place is a promotion place. By rights, the team should be playing in the Premier Division, the highest level of cricket in the county, next season. So far so good, except that a fortnight before the end of the season, we received a letter from the Devon Cricket League stating that we were being blocked from promotion because we do not run 3 hard-ball youth teams. Quite how Kilminster are going to be able to put out 33 young cricketers, on a weekly basis, is something that has passed me by if I am honest. Answers on a postcard if you can help. As you

can imagine, this did not land very well. The integrity of any sporting pyramid is reliant on performance on the pitch being the only factor in deciding your position in that pyramid.

Suffice to say, there is a bit more road to run with this. I don't think anyone is sure how this will play out. We have a massive amount of support from other teams around the county, including teams we have never played. It says much about the team's character that they had two games to play after receiving this letter and went out and won them both. We will apprise you on how this ends up when we know.

Martin Huscroft



FROGS (the Friends of St Giles Churchyard) finally held its rearranged working party on Saturday, 19th August. The weather was kind, in marked contrast to the gales and heavy rain that had caused the postponement from mid-July.

The weather of July and early August may have been bad for holidaymakers, but it was nearly perfect for rapid plant growth, and it was this growth that determined the priorities



for the day. The emphasis was on two main tasks: to remove the ivy growing up the wall of the church itself, and also on the walls surrounding the churchyard; and to cut away the low-hanging branches from the trees and shrubs that hamper access for both the mowers and the strimmers. Today, the mowers and the strimmers remained silent.

The turnout of volunteers numbered 16, sufficient to tackle those two main tasks, and also to trim the shrubbery both inside and outside the Millennium Garden and then trim the long hedge that runs down the southern side of the new churchyard. There was a most pleasant surprise awaiting the volunteers when they gathered inside the church for the mid-session break. In addition to the usual hot drinks and cakes, there was the offer of delicious hot bacon baps, that seemed to be taken up by everybody present. Our thanks to Christine and Jean Thorne for helping to make the morning memorable, and no lunch required on reaching home!

David Ingles

This month's recipes have an early autumn feel. The first two are simple, and quick to prepare lunch or supper dishes using field mushrooms and pears. The third recipe is a light dessert which is a nice way to use blackberries and can be made using ones you've picked and put in the freezer.

Pear and Goat's Cheese Tartines

Serves 2

- 2 slices of seeded sourdough bread or bread of choice
- 1 tbsp olive oil
- 150g/6oz log of soft goat's cheese
- 1 large ripe pear, cut into eighths and core removed
- 25g/1oz chopped walnuts
- 2 tbsp runny honey
- Salt and pepper

Method

1. Brush the pear pieces with olive oil and season. Heat a frying pan or griddle and cook the pear pieces for a few mins until slightly soft.
2. Spoon the honey over the pears and cook for a further minute.
3. Toast the bread, allow to cool for a minute before spreading with the goat's cheese.
4. Spoon the pears over the toasts, sprinkle the walnuts, and then drizzle with balsamic vinegar. Serve with salad leaves.



Special Mushrooms on Toast

Serves 2

- 2 slices of bread of choice, I use sourdough slices taken from a large loaf
- 1 tbsp olive oil
- 200g/8oz field mushrooms, sliced
- 1 garlic clove, crushed, optional
- ½ tsp of wholegrain mustard
- 3 tbsp crème fraîche
- 1 tsp chopped parsley

Method

1. Heat the oil in a frying pan and cook the mushrooms approx. 5 mins, add the garlic and cook for a further 3-5 mins.
2. Add the mustard, crème fraîche and the parsley and heat gently whilst preparing the toasts.
3. Meanwhile toast the bread, and butter it (optional).
4. Spoon the mushrooms over the toast and serve with some fresh salad leaves. Best eaten immediately.



Blackberry Mousse

Serves 4

- 300g/12oz blackberries
- Juice of a ¼ lemon
- 100g/4oz caster sugar
- 2 ½ gelatine leaves
- 75ml/3floz double cream
- 1 egg white

Method

1. Put the blackberries, lemon juice and 50g/2oz of the sugar in a pan and cover, simmer for 10 mins until soft.
2. Sieve the softened blackberries, collect the juice and discard the seed pulp. Return the juice to the pan.
3. Meanwhile put the gelatine leaves into a bowl of cold water and leave for 5 mins.
4. Reheat the juice until it is piping hot. Squeeze the water from the gelatine leaves. Remove the juice from the heat and stir in the gelatine and keep stirring until dissolved. Set aside and allow to cool completely.
5. Whip the cream to soft peaks.
6. Whisk the egg white to soft peak stage and then add the remaining 50g/2oz sugar a teaspoon at a time, whisking after each addition.
7. Whisk the cream into the cold juice then fold in the egg white/sugar mixture a tablespoon at a time, ensuring that the mixture is smooth and well blended and a uniform colour.
8. Pour into 4 ramekins or a small bowl. Chill overnight or for at least 4 hours.
9. Decorate with a blob of cream and a blackberry (optional).



Diane Overton

Kilmington Common

We are moving into the season of greater volunteer activity on the Common. Towards the middle of October there will be the major grass cut of the central area of grassland. Once it is raked and clear of arisings we will continue with the task of removing brambles and their roots, a slow task, but over time the plants will weaken and allow the grassland flowers to flourish.

We will also be planting a number of Heath Lobelia that have been successfully grown from seed gathered locally by two volunteers. At the time of writing we are hoping to hold a Bat

Walk at the end of September, an opportunity to identify what species of bat occur in and around the Common before they begin to hibernate. I'll write more about this in the next issue.

In the meantime for those of you who want to join us, work parties will be on:

Wednesday 18th October 10 am – 12 noon

Wednesday 1st & 15th November 10am – 12 noon

For any more information please contact Judith Simpson:
simpsonjudith71@gmail.com 01297 32694

The Kilmington Common Management Plan

The Kilmington Neighbourhood Plan designated our common a 'Green Space'. This will provide an enhanced level of protection from possible future development. During our discussions with EDDC AONB, it was highlighted that part of the common is classified as 'Lowland Heathland'. Once considered as waste land of little value, lowland heathland is now appreciated and protected for its unique fauna and flora. However, there is now very little left and, in an attempt to save the meagre 20% that has survived the last two centuries, more active management is required. Parish records show that in 1996 Devon Wildlife Trust surveyed the common, recording a long list of plants and animals. They concluded: *'Given the scarcity of lowland heath in the county, and the very small areas which now remain in East Devon, Kilmington Common represents a small but important site. Although small, it displays a surprising array of species.'*

It therefore seems sensible to improve the land management regime to rejuvenate and better protect this asset, whilst ensuring the area can also be enjoyed by residents. The following guidelines have been discussed and agreed by the EDDC AONB team, your parish council and the volunteers who provide work parties on site. Each of the four areas of the common will need a different management regime. The following plan should help to revive the central heathland and improve the biodiversity of the whole area for the future enjoyment of residents.

Footpaths will be provided and cut regularly to provide good pedestrian access across the common and to the public benches, which will be kept clear of brambles and stinging nettles.

Perimeter Edges Along the edge of Shute Road a border of around 5m wide, from the road edge to a footpath, will be left long for most of the year. We hope this may help to discourage vehicle parking on this verge which is eroding the common edge. When cut, the arisings will be removed to reduce the nutrient level, this should encourage more plant diversity.

Along Roman Road, the hedge line will be trimmed to prevent brambles etc. encroaching into the road.

Grass Triangular Point 'A' – shown in purple (*on the plan overleaf*). At the triangular point 'A', at the junction of Roman Road and Shute Road, the grass area around the public bench will be cut regularly. We shall also consider ways to protect these verges and generally improve the area for those who sit

and relax here, perhaps introducing a flower display and /or a display information board.

Eastern Wooded Area 'B' – shown in blue (*overleaf*). The shaded area under the trees will need the random tall gorse and bramble removed, and only occasional irregular grass cutting. Wild and spring flowers will be encouraged.

Central Lowland Heathland Area 'C' - shown in yellow. The central grass area 'C' may need only a late summer cut, ideally after everything has flowered and seeded. The arisings will be removed to reduce the nutrient level, encourage more diversity, and reduce dominance of tough grasses and thatch. Ground bramble and small saplings will be removed to maintain open heathland. Trees will not be planted within this open grassland area. Leave area 'C' for two years to see what dormant plants emerge. Then only consider possible reseeding of lowland heath plants recorded here in the past.

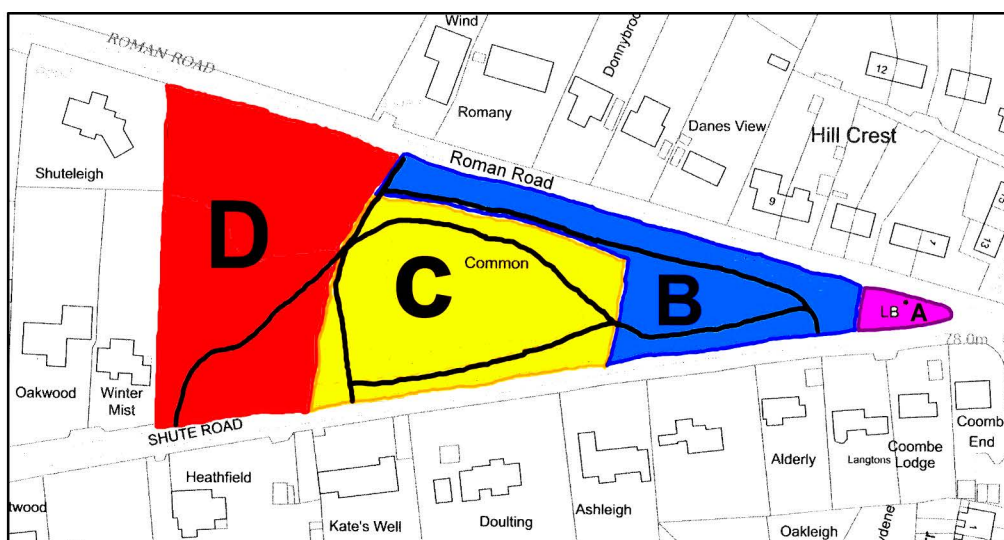
Western End Tree Covered Area 'D' – shown in red. The Roman Road entry track will be improved for pedestrian use only. We shall explore how best to keep the track surface mud free and prevent vehicle access. Approximately half of this tree covered area 'D' towards Roman Road / the stream will remain uncut. Leaving the area undisturbed has already encouraged bird nesting and wildlife. This area was previously used to bury village rubbish, which remains under the surface, and is therefore best left alone. The Japanese Knotweed in this area will be controlled and, we hope, eradicated. The remaining half of 'D' towards Shute Road will be cut and the bramble managed, to encourage the existing spring flowers to bloom again.

The common will now be monitored and regularly surveyed in the coming years, to fully understand what progress is being made. We shall seek further guidance from EDDC / AONB and our botanist who is working with the volunteer group.

We hope that this active management of the common will provide a more enjoyable environment for residents in the future, as additional wildflowers and wildlife appear. If you wish to know more or join the volunteer working group please contact councillors Stafford Seward or Peter Ball.

Kilmington Parish Council

Plan of the Common overleaf ➤



Kilmington Common Management Plan map (see previous page for details)



RBL 2023 Poppy Appeal



This year the Royal British Legion Poppy Appeal is from 26th October until 12th November – Remembrance Sunday. Kilmington has always been very generous in supporting the Poppy Appeal and we will again be putting in

place a number of different ways that you can donate should you wish to.

As in previous years, our team of volunteers will deliver a gift aid envelope and two poppies to every house in the village. Simply complete the Gift Aid envelope, seal it with your donation inside and take it to the Baptist Church Kilmington. A collection box will be available when the church is open or you can use the secure church letterbox. Completing the Gift Aid means we can claim an extra 25p for every £1 you donate.

Traditional collection tins will be available at Miller's Farm Shop, Starbucks, The Baptist Church, St Giles' Church, Texaco Garage, New Inn and Greggs. A special 'schools' pack of Poppy Appeal merchandise will also be available at Kilmington Primary School. Miller's Farm Shop has again kindly agreed for us to set up a stall during the Appeal where we will have available a range of products including items suitable for children along with metal pin badges and car and lorry poppies. Alternatively you can donate using one of the following:

- Donate direct to the Royal British Legion at www.britishlegion.org.uk/get-involved/poppy-appeal
- Donate By Text. To donate £2 text POPPY2 to 70545 or £5 text POPPY5 to 70545 or £10 text POPPY10 to 70545. Texts cost £2, £5 or £10 plus your standard network message rate

Look out for the Legion's new plastic-free Poppy which will be available alongside remaining stocks of the current Poppy. Made from 100% paper, the change in design (shown in the picture) reinforces the Legion's drive to be more sustainable and reduce its impact on the environment, whilst ensuring that the Poppy continues to be a national symbol of Remembrance for the service and sacrifice of the Armed Forces community. At the time of going to press we are not sure how many paper poppies we will receive, but we hope to include at least one of the new design in the envelopes distributed around the village.

Finally, should anyone like to assist with the Poppy Appeal we would love to hear from you. Each helper is allocated a small area within the village and is only required to deliver an envelope as outlined above.

Please donate to the Poppy Appeal this year. We need your support more than ever.

Thank You.

*Peter and Louise Wood
tava@sky.com*

Kilmington RBL Poppy Appeal Organisers





Trafalgar Night Dinner – Kilmington RBL AGM – Remembrance in Kilmington – Support to Veterans and their Families.

Unfortunately, due to spiralling costs, we have taken the decision to cancel the **Trafalgar Night Dinner** planned for 21st October in the village hall. We apologise to all those who were looking forward to partaking in what would have been a splendid evening and we will continue to plan for the future.

Kilmington RBL AGM will take place at 5pm (17:00) on Friday 6th October courtesy of the New Inn. Those planning to attend are asked to be seated by 5pm so that we can start the meeting promptly and be clear of the lower dining room by 6pm for normal opening! Please remember it is also the first Friday of the month get-together, so we look forward to welcoming you all. Those who would like to eat may wish to book early!

Remembrance may still seem a long way off, but, as Peter Wood has highlighted in his introduction, the Poppy Appeal will commence in Kilmington on the 26th October. The other reason for highlighting this annual event is to bring to your attention the ‘**Post-Remembrance Service meal**’ which this year will be in the Village Hall courtesy of Nancy Rowe Catering. This is a new venture for us, having travelled to Haselbury Mill for many years. We are hoping that by holding the event in the village hall people will not have to worry about transport etc. To book your meal please contact your shepherd, any member of the committee or our secretary Jean Falconer on Mobile 07948 767112, or by email jean-falconer@sky.com If you are interested, please reserve by Friday 20th October, we look forward to seeing you all!




I am often asked where the money goes that we raise, which is a fair question. Many people are being put off from supporting charities especially as they become more like ‘businesses’ and support costs spiral! I for one want to know that the money I donate actually gets to those who need it and not to those seeking a salary! I can confirm that everything you donate is split between the poppy appeal, benefitting veterans and their families nationally, and ‘Devon RBL Welfare’. During the past quarter, Devon issued grants totalling £200,740.46. Of the total grants provided to our beneficiaries, 50% was used to assist with the Cost of Living/ Energy Costs (£101,044.86), 5% was used to assist beneficiaries in Crisis (£9,232.50) and 45% was spent supporting Housing/Mobility/Debt etc (£91,625.88). Areas that benefitted close to us include Axminster, Honiton, Seaton and Sidmouth. If you would like further information, please do not hesitate to call me, I think this is really ‘Good News’ and great to know exactly what is happening with your exceptional generosity.

We are still looking to introduce a *Branch Community Support Officer*, which will coordinate our shepherds and report quarterly to the County, providing an overview of what we have achieved. If you would like to volunteer and help highlight everything that we do as a branch, please do not hesitate to contact me or any other committee member. As always, we continue to look for new members, so if you would like to join us, please get in touch, and remember, ***you do not have to be a member or veteran of the armed forces to become a member!*** In the meantime, thank you again for supporting the Royal British Legion, but more importantly the veterans and their families.

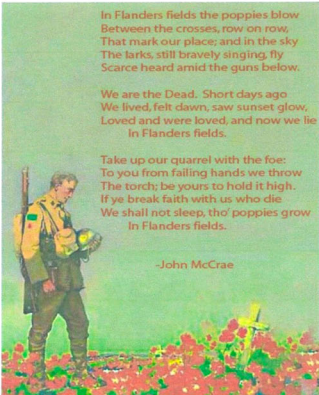
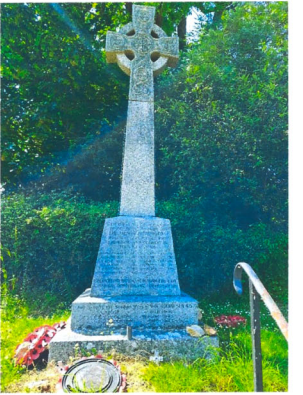
Please take great care and stay safe.

Cdr Staff Seward OBE RN Rtd
Chairman RBL Kilmington Branch
07799 612557 – e-mail t60sas@hotmail.co.uk



KILMINGTON RBL REMEMBRANCE SERVICE

0945 SUNDAY 12TH November in the Beacon, 1045 at the War memorial and afterwards at the Village Hall for the post service meal, courtesy this year of Nancy Rowe Catering

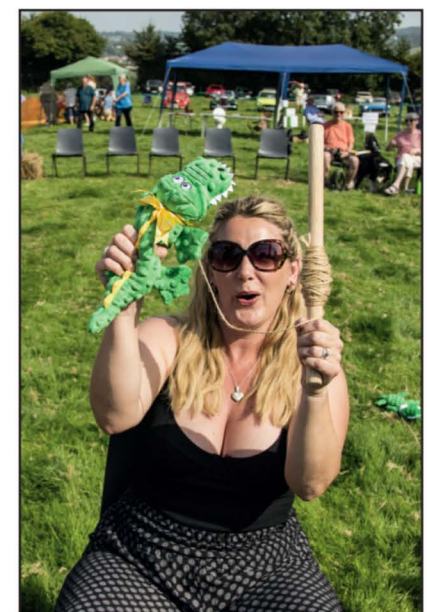
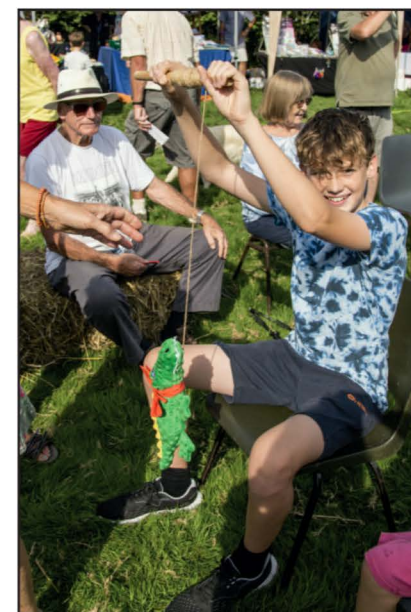
*In Flanders fields the poppies blow
Between the crosses, row on row,
That mark our place and in the sky
The larks, still bravely singing, fly
Scarce heard amid the guns below.*

*We are the Dead. Short days ago
We lived, felt dawn, saw sunset glow,
Loved and were loved, and now we lie
In Flanders fields.*

*Take up our quarrel with the foe:
To you from falling hands we throw
The torch; be yours to hold it high;
If ye break faith with us who die
We shall not sleep, tho' poppies grow
In Flanders fields.*
-John McCrae

Catered, sit down, two course lunch for an amazing £26!
Please pre order through your shepherd or Jean Falconer
by Friday 20th October – Choose from the following:
 Roasted Topside of Beef and Yorkshire Puddings
 Roasted Loin of Pork, Cracking with Stuffing
 Sweet Potato, Chestnut and Spinach Loaf served with Tomato Ragù (V/VE)
And afterwards
 Almond and Plum Frangipane Tart served with Custard
 Chocolate Brownie with Clotted Cream
 Lemon Posset Pots with Shortbread and Raspberry
 Coffee & Tea on request
Bar – Courtesy of John and the team!

KILMINGTON SHOW SEPTEMBER 2023



AXMINSTER PRINTING CO LTD

TEL: 01297 32266

Not just a Printing Company... Established in 1969



Printing & Design Services

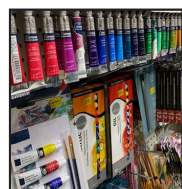
Leaflets, Posters, Booklets, Books, Labels, Tags, Menus, Banners, Magazines, Canvases, Order of Services, Headings, Business Cards, Appointment Cards, Compliment Slips, Headed Cards, Bookmarks, Invoice and Order Forms, Delivery Forms, Folders, Vouchers, Loyalty Cards, Wedding and Business Stationery, Plans, Prints (any Size up to A0) and so much more....



Stationers

- Student Essentials
- Computer Inks & Toners
- Business Machines
- Packaging Supplies
- Filing Products
- Office Stationery

All your stationery needs in one place!



Art & Craft Supplies

- Art supplies for the student or hobbyist
- Card making materials
- Lots of craft products and activity sets for children



Website: www.axminsterprinting.co.uk Email: sales@axminsterprinting.co.uk

Address: Axminster Printing Co. Ltd, West Street, Axminster, Devon EX13 5NU



Accountants and Business Consultants

Are you worried about your Tax Returns?

We provide a friendly, professional service for self assessment returns, business accounts and all aspects of taxation based on experience, qualifications and confidentiality.

HOME VISITS AVAILABLE

For an initial free meeting please telephone our office and ask to speak to Hayley Perham (Taxation Director) or email: crwaccountants@btconnect.com

Telephone 01297 553286

The Personal, Professional approach to Taxation, providing "Peace of Mind"

CRW Accountants Ltd

The Mews, Queen Street, Colyton, Devon
EX24 6JU

www.crwaccountants.co.uk

Vicary & Co

Chartered Surveyors & Property Agents

Estate Agents & Valuers
Residential - Commercial - Rural

Thinking of selling?
Call us today to arrange a
FREE market appraisal of
your home.

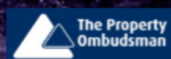
Vicary & Co Estate Agents & Valuers

5 South Street | Axminster | Devon | EX13 5AD

01297 33449 | sales@vicaryandco.com | vicaryandco.com

Sales Manager Kelsey Lawrence

Ian Vicary MRICS FISVA MARLA FAAV Pg Dip (Arch Cons) - Chartered Surveyor & RICS Reg. Valuer



FUNERAL DIRECTORS & MONUMENTAL MASONS

W. G. POTTER

Julian & Karen Hussey DipFD NAFFD

~ a family business ~

Dignified, Professional & Caring

- Offices also at Bridport, Seaton, Honiton & Ottery St. Mary
- Pre-arranged & prepaid funeral plans

*Members of The National Association
of Funeral Directors*

*Recommended by The Good Funeral Guide and
The Natural Death Centre*

West Street, Axminster EX13 5NX

01297 34283

www.funeraldirectors.uk.com



Based in Kilminster & providing all aspects of **Repair, Refurbishment & Renovation.**
Including (but not limited to!):

- ✓ General Building Repair and Maintenance
- ✓ Bathroom and Kitchen Remodelling
- ✓ Interior and Exterior Decorating
- ✓ Regular Garden Maintenance
- ✓ Landscaping and Minor Construction
- ✓ Flat-pack Construction (no more frustration!)
- ✓ A lot more - just ask!

Call **Simon** on **07939 242 101** or email
simon@bpmaintenance.co.uk
www.bpmaintenance.co.uk

*"A friendly and efficient service, available in
East Devon and West Dorset"*

§Khushi Kitchen

Fancy a Homemade,
Authentic Curry?



Then why not try a §Khushi
authentic curry experience

- Fresh Frozen Curries available
all day, every day at The Old Barn
- Kilminster's Friday Takeaway
- Event Catering
- 1:1 Cooking class with Mina



Email: mina@khushi.kitchen
Web: www.khushi.kitchen
Address: The Old Barn, The Street,
Kilminster, EX13 7RJ
Facebook: [facebook.com/khushikitchen](https://www.facebook.com/khushikitchen)
Classes: www.minascookeryschool.com

A.G.M.

Axminster Garden Machinery

SALES • SERVICE • SPARES
Independent Specialists



**FACTORY APPOINTED
AUTHORISED DEALERS
OF ALL POWER
EQUIPMENT WE SELL**



Proper Horticultural Engineering since 1979

**Visit our
well stocked
showroom
now**



**Always
Great Deals
Available**

Unit 1A Weycroft Avenue, Millwey Rise, Axminster, EX13 5HU
Tel: 01297 631186
www.axminstergardenmachinery.co.uk



www.hunthay.co.uk

Secure Containerised Self Storage

Suit Business or Domestic use

Caravan + Motorhome Storage

Industrial + Starter units

Easy, long day & weekend access

Owner lives on site

Close to A35

jenny@hunthay.co.uk

Phone: 01297 33839 / 07779 550771

Rev Julie Lomas
St Giles' Church
Kilminster
01297 35004 or 07488 278 483
revjulielomas@gmail.com

Letter from the Churches



Pastor Mike Hudson
KBC Church Office
Kilminster
07957 738 211
pastor@baptistchurchkilminster.org

Loughwood - A deliberately hidden gem.

Last month I celebrated a year of full time ministry at the Baptist Church Kilminster. What a year it has been! Like most years it has involved its fair share of celebration, unpredictability, and difficult times. But through it all there has been a common theme of a faithful God doing more than I'd ever dared imagine.

Although I might have only been in full time pastorate for a year, my family and I have been at the Beacon, and in East Devon for five years now.

Over the summer we decided to keep things local and to spend my precious annual leave in Devon. Despite being here for half a decade, there was (and still is) so much we have yet to explore. Perhaps it's the same for you? We often explore the hidden gems of faraway places while ignoring the ones on our doorstep.

One local gem, and piece of history, is Loughwood Meeting House. A stone's throw from Kilminster, and currently maintained by the National Trust, Loughwood is open for visiting all year round. This remarkable place is one of the oldest non-conformist meeting houses in Europe and indeed the world. The first church records date back to 1650, and it's likely believers met even earlier than that.

It is also the place where our church, and many other free churches in the area, trace our roots. So this year we celebrated our 373rd anniversary.

Every year we host a special service there to remember our heritage, but it has also become a special place of solitude for me when I need to take some time out from the noise of life

and ministry. For me it is a 'thin space' between earth and heaven, and it's as if you can sense the foundation of prayer on which it stands.

The place is full of amazing stories of faith in the face of adversity, at a time of less religious tolerance, when believers seeking to obey the Bible faced persecution from the authorities and the state church. The meeting house is deliberately built into the hillside for concealment, and stands on county lines so that preachers might escape to safety (via an escape hatch) if needed. Once, believers met to worship only to be greeted by a soldier, with orders to thrust his sword through the first person to cross the threshold. The soldier was completely taken aback and bashful when, led by a young lady, the congregation made their way past him regardless.

More than anything, Loughwood is a testimony to the faithfulness of God even when times are hard. Despite the challenges, people came to faith, were baptised, experienced hope, and embraced their identity as children of God. 373 years later we owe a debt of thanks to the faithfulness of the people back then, and the faithfulness of our amazing God. Whatever challenges we might be facing today, or might face in the future, my prayer is that we too would know the God who has promised never to leave us, and never to forsake us.

You can find out more about visiting Loughwood on the National Trust website. I also made a short reflection on Loughwood during lockdown which is available on our YouTube channel. Just search; 'The Baptist Church Kilminster'.

God Bless,

Rev'd Mike Hudson (Baptist Church Kilminster)

St Giles' Church Gift Day

During the afternoon of Sunday September 3rd, parishioners were invited to come and see St Giles' at work in the church and there was quite a buzz!

Mike Tyler's excellent History of the Church guided tours were very popular and much appreciated, after which (especially younger) visitors were encouraged to design a stained-glass window.

Demonstrations of the how the bells are rung took place with a minimum amount of ringing on three bells so as not to deafen the Welcoming group outside the porch collecting donations or those who ventured up the tower to see the workings of the church clock and onto the tower roof – what a glorious sight it was with the sun shining over the village. Several people bravely had a go at ringing the treble bell, the lightest of the six, weighing just over 5 cwt – a similar weight as a male grizzly bear!

Chris and Elana were kept very busy serving refreshments for everyone, which of course included plenty of cake!

Those who didn't want to climb the tower steps had a go at ringing the six church handbells which were donated to the church in 1896.

Rev'd Julie rounded off the afternoon by leading a short service of reflection and celebration of the Patron Saint of our village.



Celia Dunsford

A very big thank you must go to all who gave so generously in support of their local Church. The Church treasurer, Colin Stewart, has reported that the total gifted as of the 8th of September is £5,561. This will help to maintain the life of the Church for another year and on into the future. The Rev'd. Julie would like to thank all who kindly donated.

Christopher Thorne, Church Warden

Messy Sparklers

It was wonderful to welcome back many of our regulars and several new families to Messy Sparklers this month. I think we had one of our youngest attendees at 3 days old coming along with his big sister!

Our theme was The Wise and Foolish Builders from the parable that Jesus told. Jesus was teaching the people the importance of having a strong foundation and for Christians that foundation is God. We had various story-related activities for the children to explore. Outside the children had a range of containers to use to make rain in our water tray, there were sand and rocks to build Duplo houses on and a huge pile of Megabloks to make various buildings with. Inside the children used playdough and Jenga bricks to build walls, used tubes to put together rainmaker shakers and could make a collage of a house.

With the weather being so nice, there were not a lot of children playing inside, but we did have story books, climbing apparatus and various baby and toddler toys available for

those who wanted to be inside, before everyone was called in for story and song time.

When the children and their adults arrived, there were the usual coffee, biscuits and fruit ready to welcome them and the Post Office customers. The children had the opportunity to use triangle and square-shaped shortbread to make a house, and then draw doors and windows on it using writing icing.

Messy Sparklers is a sensory stay and play group for children under 5 years and their adults. Our October session will be on Tuesday 3rd October. We meet from 10:30am to 12:30pm at The Beacon. A contribution of £2 for the 1st child and £1 for additional children covers all the activities plus lunch for both children and their parents/carers. Anyone is welcome, but booking is essential, if you aren't on our mailing list, please contact children.youth@beaconbaptist.co.uk to receive a booking email. Remember to dress for mess!

Juletta Obudo

Thank you BBQ and Social Evening at The Vicarage

What a wonderful time was had by all at The Vicarage, on the evening of Saturday, 2nd September. Reverend Julie and Steve kindly invited all those who were involved with and who helped at St Giles' Church:

Those who helped with / at the Services
Those who kept the Church spick and span
Those who helped with the upkeep of the Churchyard
Flower Arrangers, Clock Winders, Bell Ringers, Bible Readers, Prayer Readers, Brass Cleaners...
...and those who kept the weekly Coffee Mornings and Toddlers Groups going.

I am sure that I have missed some – forgive me if I have.

The evening was glorious, the weather was kind. We had Burgers, Sausages, (wonderful BBQing Steve and Peter!), Onions (they went well), Salads, etc. I was on the Wine and Soft Drinks Table – you all kept me very busy, but it was well worth it. Live Music – thank-you Mike and fellow Band Members – you were wonderful and your Music went down extremely well. And the Puddings, WOW the puddings, so, many and so tasty – I have never seen so many mouth-watering puddings all on one table.

Thank-you Julie and Steve for inviting us, for the Welcome and for such a lovely time – an evening not to be forgotten.

Christopher Thorne





Kilminster Cricket Club



The Teachers XI¹

A number of cricket teams have been formed over the years due to connections beyond an interest in the game. A good example of this is **The Authors XI**, a team formed in 1895, whose alumni include P.G.Wodehouse, Arthur Conan Doyle, J.M.Barrie and Neville Cardus. The team was revived by Charlie Campbell and Nicholas Hogg in 2012 and currently features the likes of previous Kilminster opponent Sebastian Faulks, Peter Frankopan, Adam Rutherford, TMS statistician Andy Zaltzman and commentator Dan Norcross, the Today Programme's Amol Rajan, Tom Holland and his brother, James Holland. As an aside, if you are interested in the history of the Second World War, Holland's podcast 'We have ways of making you talk', with comedian Al Murray, is well worth a listen. I digress.

In the 1970s and 1980s, Kilminster would regularly play over 40 and sometimes as many as 55 games in a season. This would involve many midweek games. Fortunately, in those days, when Fixture Secretary **Jack Lavender** was trying to get a team together, he was able to call on local businessmen like **Tony Rockett** and **Chris Bolton**, retailers on half day closing day including himself, his son **David, Dudley Hurford**, farmer **Mike Collier**, if he could get someone to cover the milking, and a number of guest players from other local clubs like **Phil Spong**, **Derek Tucker** and another farmer, **John Gregory**. Kilminster would invariably field a strong midweek team in that era.

The Teachers

However, there was one profession that was able to supply half of the team during the holiday season. At that time, off the top of my head, the teaching profession could supply club legends **John Lavender**, **Mike Marsh** and former teacher, **Peter Davis**, along with other teachers including **Geoff Wake**, **Cresset Thursby-Pelham**, **Peter Huscroft** and **John Shotton**.

Even though teachers have made up a smaller proportion of the team since the halcyon days of the 1970s and 1980s, there have still been a number of teachers representing the club over the years. I thought it would be an interesting exercise to pick a team of teachers, a Teachers XI if you like, from those who have played for the club over the years.

Looking at the list of teachers, it does seem that the list is skewed towards more batsmen than bowlers. **John Lavender**, **Mike Marsh** and **Peter Davis** would be pretty much a guarantee of runs in any team, although Mike is also the leading wicket taker amongst the teachers with his off spin. **Cresset Thursby-Pelham**, **John Shotton** and **Peter Huscroft** were all more than capable batsmen and occasional bowlers and **Geoff Wake** was a fine all rounder, batting, bowling and fielding.

Any Kilminster Teachers XI would have very good wicket keeping options provided by **Graham Watts**, **Ian Gooding** and **Eddie Clarke**. Graham joined the club in the mid 1990s whilst still teaching in the Worcester area and, as a top class batsman, scored enough runs to take him in the top 10 all time

run scorers for Kilminster. Ian started in the team in 2000, becoming club captain before moving with work to Sussex. He continued to play occasionally until 2023, when he returned to the 1st XI to play a key role in the team that finished runners-up in the Devon Cricket League A Division. Apart from his batting and exceptional wicket keeping, Ian brought a hard edge to the team, utilising his experience from the higher echelons of the Sussex League. Ian currently sits 3rd in the all time number of dismissals, along with being in the top 20 all time run scorers, for the club. Eddie has made a big impression since joining the club in 2020 by his work coaching young players, both at Dynamos level and those in a slightly older age group, who are now starting to come through in the 2nd XI and friendly matches for the club.

Fast bowlers seem to be rarer amongst the teachers who have played for Kilminster. The outstanding fast bowler amongst the fully paid up club members would be **Ben Noble**, who played in the 2000s and early 2010 at 1st XI level before returning to help out the 2nd XI in recent years, still bowling challenging away swing, if a yard or so slower than in his prime. Another outstanding bowling teacher who also featured strongly in the 2023 A Division runners-up team is off spinning all rounder **Matt Reed**. His highlight of the 2023 season was probably dismissing Torquay's prolific South African, Ruan Terblanche.

Long term Kilminster servants **Les Baker** and **Ron Seward** were both batting all rounders, batting left handed and right handed respectively. Strangely, that inverted with their bowling, where Les bowled right handed and Ron bowled left handed. Between them, they contributed many runs and wickets to Kilminster's cause over the years.

Our overseas players have also included teachers including **Sam Cuconits**, who made an enormous impact in 2023 with his outstanding batting and ripped off spin, which made him one of the key contributors to the club's league success that season. Despite Terblanche's mountain of runs for Torquay, a case could easily be made for Sam being the best overseas player in the Division, as he took 28 wickets on top of his 638 league runs, including two hundreds and four fifties. Sam is currently a Grade cricketer, whereas most of the overseas players in the A Division had records in first class cricket. I suspect he can progress much further in his cricketing career. Leg spinner **Tim Boniface**, another popular Australian, represented the club for a season whilst teaching in Taunton with **Matt Reed**.

As well as selecting fully paid up members of Kilminster Cricket Club, a number of teachers have guested for the team during holiday periods. These include some very, very good cricketers including county players Norman Borrett and G.H.Chesterton, plus prolific batsman Julian Page, wicket keeper batsman Phil Arbourne and express bowler John Rhodes.

Continued ➤

¹ Figures complete up to the end of the 2023 Season.

By my estimate, these teachers have collectively contributed:-

- 4,458 appearances
- 110,244 runs, including 109 hundreds
- 1,436 wickets
- 1,901 catches and stumpings

for Kilminster Cricket Club.

That is the squad, and it is a really good squad. Selections are always subjective, so you can pick the XI.

Copyright/Credit: Kilminster CC / Martin Huscroft: no reuse without copyright owner's consent.

References

1. 'Kilminster Cricket Club' DRAFT and research, Gerald Gosling.
2. Kilminster play cricket site: Scorecards 1912–1939 (half complete), 1946–2023 (complete bar 7 scorecards)
3. The Authors XI – Team

Reproduced with the kind permission of Martin Huscroft

Power Cuts – PSR & Compensation



Power Cuts:

Are you eligible for the Priority Services Register?

When are you entitled to compensation?

The August power cut that impacted all of the properties in Kilminster was a reminder of how susceptible our rural overhead power supply is to storms. Power cuts are an irritation to us all but potentially far more serious for people who need electricity to run medical equipment or anyone who relies solely on electricity to provide heating and/or cooking facilities.

PSR: If you need extra support (or know someone who does) you should make sure that you are added to the **Priority Services Register (PSR)**. Your Energy Supplier (this will be **the company who bill you for electricity or gas usage**) has an obligation to provide additional support to customers who are on their PSR, for example, you can request help to read your meter if you are unable to do so yourself, and customers with medical needs should be prioritised for emergency support during unplanned outages.

You are eligible if you:

- have reached your state pension age
- are disabled or have a long-term medical condition
- are recovering from an injury
- have a hearing or sight condition
- have a mental health condition
- are pregnant or have young children
- have extra communication needs (such as if you don't speak or read English well)
- need to use medical equipment that requires a power supply
- have poor or no sense of smell (if you have a mains gas supply)
- would struggle to answer the door or get help in an emergency

You can find out more about the PSR, including how to register, via this link.

www.ofgem.gov.uk/information-consumers/energy-advice-households/getting-extra-help-priority-services-register

Compensation after a power cut: If your home or business is affected by a power cut, you may be entitled to compensation from the Electricity Network Operator (in East Devon this is the National Grid, *not* your electricity supplier). If an unplanned power cut was caused by bad weather you are entitled to £80 if the power was off for 24 hours. If it was a severe storm, you'll get £80 if the power was off for 48 hours. You'll get £40 for each extra 6 hours where you don't have electricity – up to a maximum of £2,000.

If an unplanned power cut wasn't caused by bad weather, how much you get depends on how many homes were affected. If fewer than 5,000 homes were affected, you'll get £90 if your power is off for 12 hours. You'll get £40 for every 12 hours after that.

If a power cut is planned the National Grid must give you 2 days' notice if they plan to cut off your supply to do work. You can get £35 compensation if either they don't give you 2 days' notice, or they cut you off on the wrong day.

More information here www.nationalgrid.com/power-cuts



Ann Dorey



MNR MOWERS LTD
Unit 8 Devonshire Court
Heathpark Industrial Estate
Honiton, Devon EX14 1SB

Andy Moule
SALES SERVICE SPARES
Collection & Delivery in East Devon
For all types of Garden machinery
Tel 01404 548300 Fax 01404 548301
MNRMOWERSLTD@UNIT8.ECLIPSE.CO.UK

MOPS'Y MOPS
CLEANING & DOMESTIC SERVICES
SMALL JOBS TO
SPRINGCLEANS.

MATURE FEMALE CLEANER
CALL SADIE
0129734367
MOBILE 07779703388





A seasonal poem by our multi-award-winning local poet...

Halloween

Autumn is with us it's damp and it's cold
Warm clothes are a must for the young and the old
The evening mist shrouds the valleys and streams
And the shadows that creep give children bad dreams

It's the end of October and time of the year
When Halloween witches and ghouls all appear
They emerge from dark corners and often are seen
In the cold eerie light of a silver moon beam

The heath and the churchyard we won't venture near
The shadows and silence all fill us with fear
We try to be brave, treat life with a grin
But only we know the turmoil within

We encourage our children to treat it as fun
Halloween parties have all just begun
Some dress in masks and some in white sheets
And some knock up neighbours to play trick or treats

But owls hoot a warning and bats fill the air
They heighten our senses and bid us take care
For the byroads familiar on light summer nights
On this evening of evil just fill us with frights

We just long to reach the safety of home
With the family all present we're never alone
But the pumpkin lantern on our garden wall
Makes everyone think that we don't scare at all

But let us be honest the chill down our spine
Makes this time of year a frightening time
We just don't feel safe alone in our lane
Until bonfire night makes us smile once again

John Thorne

Films Available For Hire

If you were unable to come and see our films on the big screen, we can now offer you the opportunity to enjoy first rate films in your own home. For a small hire cost of £3 for up-to 7 day loan, we have the listed films on offer. Each month, following our film show, that DVD will become available for hire. We will not be publishing an updated list each month, so look out for the posters to see what the KCC is showing.

To book the film and arrange to collect, contact:
Eileen and John Birch, by phone: 01297 34595
or email: johnbirch598@btinternet.com
Collect from: Hill View, Wellmead, Kilmington
(opposite the New Inn).



*Please Note: The Blu-ray discs require a player that can accept Blu-ray discs; these will **not** play on a standard DVD player. Newer equipment under 3 years old will probably be Blu-ray compatible, but check for compatibility first.*

DVD	Blu-ray Disc
West Side Story	The Courier
The House of Gucci	Little Women
Downton Abbey A New Era	No Time To Die
The Good Liar	Belfast
ELVIS	The Duke
Operation Mincemeat	
The Railway Children Return	
Fisherman's Friends One and All	
Mrs Harris Goes To Paris	
Living	
A Man Called Otto	
Empire of Light	
Allelujah	
What's Love Got to Do With It?	
Available from:	
Mid-October - Phantom of the Open	
Mid November - Lion	
Mid December - And Comes the Nightjar	



At Hospiscare we find we're struggling with recruitment of volunteers in our shops just at the moment:

- Would you like to meet new people, learn new skills and put your talents to good use?
- Volunteering in one of Hospiscare's charity shops could be just the thing for you!
- Shop volunteers have an extremely varied role which includes serving customers, supporting the manager with window displays, sorting through donations and promoting and selling Hospiscare's lottery
- Spend time getting to know staff and other volunteers, all while making a real difference to your local hospice charity

If you would like to find out more, please visit
<https://jobs.hospiscare.co.uk/?param=2> or contact
volunteering@hospiscare.co.uk



Axminster and Lyme Cancer Support



www.axminsterandlymecancersupport.co.uk
www.facebook.com/axminsterandlymecancersupport.co.uk
Tel: 07512 279663

Email: info@axminsterandlymecancersupport.co.uk

Mailing address: Axminster and Lyme Cancer Support, Heathermoor, Yawl Hill Lane, Yawl, DT7 3RW



Newsletter no. 60

ALCS anticipate that their new premises will open in mid-October. They report a great increase in those being diagnosed and repeat their pledge to support anyone in the local area who is affected by any kind of cancer. They look forward to having a space where they will have the opportunity to help many more people by being accessible during the week.

In this newsletter they also specially recommend a free App called Oncio (IO=integrative oncology) which is a patient-centred, evidence-informed field of cancer intended to empower adult patients and carers to navigate through the conflicting information.

The ALCS team has a new physical therapist, Rosie Jackson, who uses her experience and training to help others to rehabilitate after illness, and get into shape for the life they

want to lead, rather than 'wasted gym memberships or yo-yo dieting'. On the occupational side their 'Creative hub' offers a number of workshops for acrylic art, creative writing and illustrated journaling which will continue throughout the next few months of this year.

For men only each month there are opportunities to talk to other men affected by cancer and to ask any questions about the support which is available. These are usually held at Pie and Pint and Blokes' Brunch events in local pubs. Other regular events for everybody include drop-ins and support groups, some in Lyme Regis and some in the Scott-Rowe Room at Axminster Hospital.

If you would like to receive the full newsletter which has much more information and detail, or to register your interest, or have any queries for ALCS, please use one of the addresses above to contact them.



Something Doesn't Smell Quite Right?



Do you find we are all being manoeuvred into worrying about how we smell and that anyone not smelling like a garden of roses should feel ashamed? It is the deodorant industry that should be ashamed for pumping so many pollutants into us and into the atmosphere! 3.2 billion single use plastic deodorants cases are thrown away every year. The plastic waste created annually from the deodorant industry is enough to fill over two hundred Boeing 747 with disposable plastic; that's ludicrous, isn't it? In addition, research suggests that spray deodorants contribute the same amount of air pollution as motor vehicles. It does make you think.

You will have read in September's article a list of chemicals regularly used in the production of our day-to-day household products, so you will remember Triclosan, Parabens, Phthalates and Formaldehyde. In addition to these foul four which can be found in deodorants, there are also artificial/synthetic fragrances. Whilst companies do not have to disclose the specific ingredients, by inference artificial is not natural! Also included in the walk of shame list is Propylene Glycol, (a chemical which gives the deodorant stick its firm shape and texture. Butane and Isobutane make the aerosol deodorants work (these chemicals are banned in Canada and the E.U. for being toxic).

It's a good idea to read the list of ingredients before buying. The build up of the chemicals in the body from all the products we use, is still largely unknown and it is worth having a go at reducing some of them... thereby also eliminating the plastic casings and packaging.

So what can we switch to, in order to protect ourselves? Firstly, it's always good to do your own research. There are several natural deodorants on the market, such as 'Fussy', 'Wild', 'Salt of the Earth', 'Life Supplies', which are refillable and sold with a subscription option*. Peace with the Wild* has a variety of them on their website. In fact 'Fussy' was a successful contender on Dragons' Den! You could try out a deodorant stick or cream from a zero waste shop. In respect of aerosol deodorants, looking at the statistic above, perhaps it's time to use them up and switch; this would be especially important for anyone with asthma or any other lung conditions in the household. It is reassuring to know that there are eco-friendly alternatives out there for us to choose!

**The above links are merely given for information and do not constitute a recommendation from Plastic Free Axminster. In addition there may be some medical conditions which preclude their use. Please do your own research; what will suit one person will not suit another.*

ECO CHURCH and Personal Carbon Footprints

If you have been keeping up with past editions of Parishes' Papers, you will be aware that all of the Churches within the Five Alive are striving for Eco Church Awards. You may need to be reminded what Eco Church is. Well, Eco Church is a scheme that is run by A Rocha UK. They are helping to equip churches to care for God's creation through worship, buildings, land, community engagement and through individuals' lifestyles. Surveys are completed and then, depending on our answers, each church is considered for an ECO Church Award. At present St Giles' at Kilmington and St Michael & All Angels Church at Stockland have Bronze Awards. I am confident that some of the other Churches within the Five Alive will soon have Bronze Awards too. We do need your help to accomplish this. I realise that the environment and ECO living might not be a priority for all. Cost can certainly be a factor. What I would say is that whilst awards are nice, the survey has brought questions and thoughts / subjects to the fore which I may not have considered before. Some actions now do not involve cost or involve very little cost. My personal take is that I very much want to do all that I can to leave this area, this country, this planet in a better state than when I was created. I hate the thought that I have done harm to the planet through past actions. I realise that I was probably not aware that my actions were causing harm at that time, but I am aware now. I want future generations to be able to enjoy this area, this country, this planet as I have done. I don't want it to be a place where life is a struggle and where certain areas are too degraded to live in.

I would be very pleased to talk with anyone who would like to know more, who maybe would like to go through the ECO Church Survey so that they can also consider ECO areas that maybe they had not considered before. Maybe we could complete a Personal Carbon Footprint together, or, you could complete one alone. There is a Carbon Footprint Calculator online which the Open University has created, amongst others. The link to this Calculator is

https://students.open.ac.uk/candc/carbon_calculator

This calculator can just take ten minutes to complete – we did not need to look anything up. You might ask why bother calculating your carbon footprint? Well, I would say that it gives us a good idea of where we are now and what we can do to each reduce our carbon footprint. It is a bit like the survey in that it brings up areas that we might not have considered before, it helps to quantify these areas with regards to our carbon footprint and it might show us that, with small changes in lifestyle, improvements can be made. There are areas where it will be very difficult to reduce our footprint, in these instances it might mean that a change in shopping / purchasing habits will help. I would encourage all to at least look at this and to maybe take ten minutes out to calculate your Footprint. As I have said above, I would be very pleased to help with this, especially with those who may struggle with the internet, or who do not have access to the internet.

Together let us make this planet better and cooler bit by bit. Let us take care of God's creation.



Christopher Thorne

NIGEL PHILLIPS GARDENING SERVICES

Does your garden need a good tidy

READY FOR SUMMER

Phone Nigel Phillips 01297 35302

Also regular grass cutting and up-keep all year.
Friendly local service.

Stuart's Sweeping Service

Your local chimney sweep



07432 118318 or
01404 831288

Evening and weekend appointments available.



Sudoku Challenge

To solve this puzzle, each 3 x 3 square, row and column must contain all of the numbers 1 to 9.

Level: Hard

Solution on Page 26

				1			5	
			5			2	8	1
			2		8			4
5			4	2		3	1	
		1				9		
	2	3		8	5			7
3			8		4			
8	7	4			2			
	5			7				



Axe Valley Motors 01297 34217

We pride ourselves in customer service and offer free collection and delivery or a loan car.



Our Services

MOT's

MOT repairs

Menu price servicing

Diagnostics with the latest tools

General repairs

Welding

Small body repairs

Contact Alistair or Jenny to book or receive a quote.

Vintage Engineering

An engineering company with a difference. We cater for the one offs and bespoke items, in Metal (welding and fabrication) wood, and technical objects.

We restore Vintage/Classic cars and motor bikes, M.O.T welding, repair gates, stairs, individual items, make new objects in steel, stainless and aluminium and manufacture or repair wood and mechanical items.



Do you have those broken or damaged objects that you need repairing or replacing that will not cost the earth, and those home repairs or builds that no one seems interested in. We can give you a cost to do those things you just want sorting.

Call 07444 244 562

Whitchurch Canonichorum

vintageengineering.co.uk

Chris Stubbs Electrical

Est 1981

OFFICE ADDRESS: UNIT 2,
THE ASSEMBLY ROOMS,
GUNDRY LANE, BRIDPORT,
DORSET, DT6 3RL

Bridport Office No. 01308 422726
Kilminster Home No. 01297 631244
Mobile No. 07836 247294
email: StubbsChris@hotmail.com

"For a friendly service
at a competitive price call us today"



GREEN MACHINES Mobile Garden Machinery Repair

FORMERLY DAVID GEAR HORTICULTURAL

Oliver Newton

Service & Repair of all
Garden Machinery

Call Oliver Today!

01297 23913





Dates for October 2023

Events That Happen the Same Time Every Week

Sunday	10:30 am	The Beacon	Service
Monday	Early	Your house	Recycling and Food Waste Collections
	2:00 - 4:00 pm	Village Hall	Country Dancing
Tuesday	10:00 - noon	The Beacon	The Post Office and Community Cafe with free refreshments
	10:00 - noon	Village Hall	Table Tennis
Wednesday	09:30 am	The Beacon	Tummies, Toddlers & Tinies (Term time only)
	10:00 - noon	St Giles' Church	Mums and Babies Support Group
	2:00 - 4:00 pm	Village Hall	Short Mat Bowls
	2:00 pm	The Beacon	The Beacon Home Group
Thursday	1:45 pm	The Beacon	Just For You ladies Bible study and prayer (term time only)
	7:00 - 9:00 pm	Village Hall	Table Tennis
Friday	10:00 - noon	St Giles' Church	Coffee and a Warm Welcome

Calendar Events

Sun 01 Oct	11:00 am	Yarcombe	Harvest Festival at Yarcombe, followed by Holy Communion for the Mission Community
	7:30 pm	The Beacon	Encounter: A time of worship and prayer
Mon 02 Oct	Early	Your House	Landfill plus Recycling and Food Waste Collections
Tue 03 Oct	10:30 am	The Beacon	Messy Sparklers
Wed 04 Oct	09:30 am	The Beacon	Men's Home Group (for prayer and Bible Study)
	09:30 am	St Giles' Church	Said Communion
Fri 06 Oct	5:00 pm	The New Inn	RBL AGM at 5:00 pm, then get-together at 6:00 pm
Sun 08 Oct	11:00 am	St Giles' Church	Harvest Festival
	12:30 pm	Village Hall	St Giles' Church Harvest Festival Lunch
Mon 09 Oct	7:00 pm	Pavilion	KPC Meeting
Tue 10 Oct	Early	Your House	Garden Waste Collection
	10:00 am	The Beacon	Create Craft Group
Wed 11 Oct	7:15 pm	Village Hall	KCC - "The Phantom of the Open"
Thu 12 Oct	2:00 pm	Village Hall	KCC - "The Phantom of the Open" - Matinee
Sun 15 Oct	3:00 pm	St Giles' Church	Celebrate Together
Tue 17 Oct	11:15-11:45	The Street	Mobile Library
	12:30 pm	The Beacon	Community Contact Lunch
Wed 18 Oct	10 am-12 pm	The Common	Kilminster Common Work Party
Sat 21 Oct		Village Hall	Black Tie Trafalgar Night Dinner - CANCELLED
Sat 21 Oct	08:00 am	The Beacon	Men's Breakfast
Sun 22 Oct	09:30 am	St Giles' Church	Morning Prayer
Mon 23 Oct	Early	Your House	Landfill plus Recycling and Food Waste Collections
Tue 24 Oct	Early	Your House	Garden Waste Collection
	09:30 am	St Giles' Church	Said Communion
Sun 29 Oct	2 am	Everywhere	Clocks go back 1 hour
	10:30 am	Stockland	Holy Communion for the Mission Community

Sudoku Solution

2	4	8	9	1	7	6	5	3
7	9	6	5	4	3	2	8	1
1	3	5	2	6	8	7	9	4
5	6	7	4	2	9	3	1	8
4	8	1	7	3	6	9	2	5
9	2	3	1	8	5	4	6	7
3	1	2	8	9	4	5	7	6
8	7	4	6	5	2	1	3	9
6	5	9	3	7	1	8	4	2

01297 816002
lawsoncomputers.co.uk

Inside **waffle**
TRINITY HOUSE
AXMINSTER

Useful Telephone Numbers



Village Contacts

Bell-ringing – Celia Dunsford	01297 33563	Kilminster Gardening Club Bev Perkins, Secretary	01297 631801	RBL – Jean Falconer – Sec Stafford Seward – Chairman	01297 33708 01297 33909
Bridge Club – Eric Samways Gill Bullock	01297 24260 01297 647768	Kilminster Community Cinema John Watts	01297 639758	Short Mat Bowls – Edith Turner	01297 34090
Country Dancing – Gill Perkins Marie Thorne	01297 32888 01297 631194			Table Tennis – Jenny Nickolls	01297 639758
Cricket – David Lavender	01297 631868	Kilminster Primary School (incl. Kilminster Pre-School)	01297 32762	Telephone Box Library Karen Hodder	01297 35162
Footpath co-ordinator, Tom Cook footpaths@kilminstervillage.com	07974 001197	Millers Farm Shop	01297 35290	Tennis – Christopher Eastwood Jane Chalk	07772 930411 07866 040310
Hitchcock Pavilion Bookings Peter Huscroft	01297 32243	The New Inn	01297 33376	Village Hall Bookings Louise Quincey	01297 32358
				Village Hall 100+ Club Jean Falconer	01297 33708
Kilminster Service Station	01297 300459	Ring and Ride	07510 255965	www.kilminstervillage.com Luke & Maxine Lawson	07719 909532

Medical and Support

Axminster Hospital	01297 630400	'Devon Doctors On Call' (Out of Hours GP Service)	0845 6710270	Veterinary Surgery	01297 630500
St Thomas Court Surgery	01297 32126	Dentist Helpline	03330 063300		

Services and Facilities

Refuse Collection	01395 571515	Axminster Library	01297 32693	Clerk to the Parish Council	07800 826657
Water – General	0344 3462020	Mobile Library	07510 255965	Iain Chubb	01297 35468
Water – Leaks	0800 2300561			E. Devon District Councillor	07932 459595
Electricity – Emergency, National Grid (formerly Western Power Dist.)	0800 6783 105 or just 105	Ring & Ride	07510 255965	for Newbridges Devon County Councillor for Whimble & Blackdown	
Axminster Care Service	01297 35550	Police: Crime stoppers – 0800 555111: Emergency – 999: General – 101			

Churches

St Giles' Church Rev Julie Lomas	01297 35004	Baptist Church Office Pastor: Mike Hudson	01297 631638	Axminster Catholic Church Parish Priest: Father Jacek Kostuch	01297 32135
-------------------------------------	-------------	--	--------------	---	-------------

Advertising in Postscript, Payments, and Donations

Postscript is published ten times each year and is delivered free of charge to every house in Kilminster. All advertising fees and donations to Postscript are used to meet the cost of printing. ALL advertisements which are set out, from any source, are chargeable as follows and must be paid for in advance.

Closing date for adverts is the 12th of the month prior to publication. E.g. The 12th October for the November Issue.

Please supply adverts as a **print-ready pdf with 3mm crop & bleed wherever possible**, alternatively a hi-res png or jpeg can be accepted.

For full specification please email Rob via postscript@kilminstervillage.com



	Black and White Advertisements	Colour Advertisements
Credit Card (70 mm x 40 mm)	£7 or £30 for 5 months	Not Available
¼ Page (90 wide x 136 mm high – Portrait)	£15 for one-off or £65 for 5 months	£20 for one-off or £90 for 5 months
½ Page (184 x 136 or 90 x 276 mm)	£25 or £100 for 5 months	£35 for one-off
Full Page (184 x 276 mm)	£40 or £150 for 5 months	£50 for one-off

Please Note: Your advert may sometimes be printed slightly larger than the size purchased for aesthetic reasons in some editions.

BACK COVER: Occasionally the back cover is available for a one-off colour page advertisement. Cost: £50

PAYMENT: Cheques should be made payable to: **Kilminster Postscript** and posted to: **Mrs V. Larcombe, Brookside, The Street, Kilminster, EX13 7RJ.**

BACS account name is Kilminster Postscript, sort code: 51-61-23, account no: 18159400

COMING AND GOING FOR A SONG: There is no charge for these entries for items valued up at £20 or less. However, donations are appreciated – these can be popped through Vicky Larcombe's door.

Please post payments for advertising in Postscript and donations to help with printing costs through the front door of Vicky Larcombe's house. Thank you.

Directions for finding Vicky Larcombe's house. Vicky is treasurer for Postscript.

From Whitford Road turn left and walk up The Street, passing Koppers, Khushi Kitchen, the Bull Pen, and West Gate on your right. The next house is Brookside where Mrs Vicky Larcombe lives. If you find yourself crossing Meadow Bank, you have gone a few steps too far.



KILMINGTON PLAYERS

AGM & PANTO INTEREST EVENING

11.10.23

**JOIN
US!**

KILMINGTON PAVILION

Kilminster Players will be holding their AGM at 6:30pm, followed by a Panto interest evening at 7pm for ages 7-16, then Adults from 7:30pm.

If you are interested in performing in this years panto, whether it is your first time or 100th time on stage, we would love to see you!

If you are interested, but unable to make the date, please contact Louise Quincey - 01297 32358 / qncytwo@gmail.com

Pantomime will take place during the February 2024 half term (14th-17th).

